



## 2010 Porsche 911 Carrera S w/ Sport Chrono Package!

**Website Price \$68,995**

View this vehicle on our website at [autoparkdallas.com](http://autoparkdallas.com)



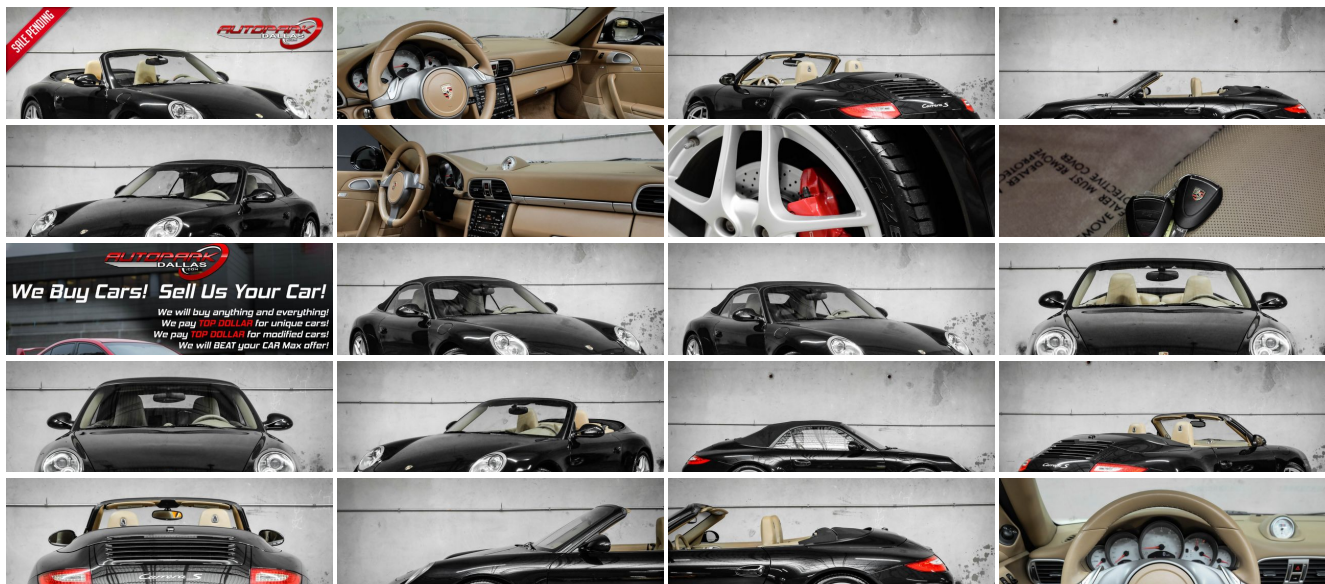
(214) 945-2601

2061 S Stemmons Fwy , Lewisville, TX 75067

Photos

Details

Contact



## Specifications:

<b>Year:</b>	2010
<b>VIN:</b>	WP0CB2A98AS754883
<b>Make:</b>	Porsche
<b>Model/Trim:</b>	911 Carrera S w/ Sport Chrono Package!
<b>Condition:</b>	Pre-Owned
<b>Body:</b>	Convertible
<b>Exterior:</b>	Basalt Black Metallic
<b>Engine:</b>	3.8L horizontally-opposed DOHC DI 24V 6-cyl engine -inc: dry sump lubrication, oil cooler
<b>Interior:</b>	Sand Beige Leather
<b>Transmission:</b>	7-SPEED PORSCHE DOPPELKUPPLUNG (PDK) AUTOMATIC TRANSMISSION
<b>Mileage:</b>	30,865
<b>Drivetrain:</b>	Rear Wheel Drive
<b>Economy:</b>	City 17 / Highway 24

## Vehicle Description

AutoPark Dallas is thrilled to offer you this Low Mileage 2010 Porsche 911 Carrera S for sale! The classic Porsche styling, sublime steering, and superb brakes give the Carrera a unique combination of traits make them so desirable. Any Porsche is already on another level of vehicle luxury thanks to its entitlement, but a Carrera S can provide a pure driving experience that is fun and unmatched by any other luxury brand! Our 911 Carrera S here at APD comes in a beautiful Basalt Black Metallic on Sand Beige color combo, in Amazing condition, LOW MILEAGE, and best of all a drop top convertible! DEFINITELY A MUST SEE!!! Check out this Porsche 911 Carrera S parked here in our indoor 16,000 Sq Ft Showroom located in Dallas , TX. amongst our inventory of 100+ other unique and luxury vehicles!

---

### 2010 Porsche 911 Carrera S

\* 2 Previous Owners !\*

\* Clean CarFax !\*

\* 2 Set of Keys !\*

\* LOW MILEAGE !\*

\* Sport Chrono Package Plus !\*

\* Power Seat Package !\*

Basalt Black Metallic Exterior

Black Soft-Top Convertible

Sand Beige Leather Interior

Bluetooth

Navigation

Heated & Cooled Front Row Seats

Single-Zone Climate Controls

\* Sport & Sport Plus Mode !\*

Cruise Control

Driver Seat Memory

In-Dash CD Changer

BOSE Premium Audio System

Powered Convertible Top

Porsche Active Suspension Management

3.8L Horizontally-Opposed DOHC DI 24V 6-Cyl Engine

7-Speed Automatic Transmission

Rear Wheel Drive

Professionally Detailed!

Well Maintained!

\* Free CarFax Report !\*

AND SO MUCH MORE!!!

---

## Financing is available!

Check out our Payment Calculator to get an estimate on your monthly payments!

OR

Get pre-approved in no time by filling out a credit application on the 'Finance' section of our website!

We also offer MANY different Extended Warranty options!

---

Check out our Google Reviews by \*Clicking\* this LINK!

Referrals and Testimonials is what our business is built on!

---

The team here at AutoPark Dallas, is dedicated to offering a level of customer service not usually found in the automobile industry. Thanks to years of extensive car buying / selling experience, we pursue quality used and new vehicles that are hand-picked from factory sources. Our love for automobiles and dislike of traditional dealership tactics is what motivates us to provide the service we do! The pride we take in continuing this service long after the vehicle has been delivered is what we strive for! Looking forward to making every effort to see that our customer is completely satisfied and a friend for life!

Pre-purchase inspections are always welcomed!

We also offer airport pick-up, competitive financing options, free CarFax Reports, Car Shipping nationwide, Extended Warranty plans, and so much more!

Trade-In(s) are always accepted or sell us your used car (MODIFIED OR NOT)! Please call or text for more information about Trade-Ins or selling your car to us @ (214) 945-2601!

---

#(214) 945-2601

Call or Text **Anytime!**

Se habla Español

**WE BUY CARS!**

WWW.AUTOPARKDALLAS.COM

### Installed Options

Interior

### Option Packages

Factory Installed Packages

- 3-spoke leather-wrapped tilt/telescopic steering wheel- Alarm system
- Aluminum painted interior trim- Anti-theft system
- Automatic climate control -inc: active carbon filter- Aux pwr outlet- Cruise control
- Door entry guards w/model logo- Dual front cup holders- Front footwell lighting
- HomeLink system- Illuminated visor vanity mirrors
- Keyless entry -inc: remote trunk release- Leather-wrapped gear lever & handbrake
- Pwr windows -inc: auto up/down, anti-jamming feature- Rear window defogger
- Split-folding rear seats
- Standard seats -inc: driver & passenger pwr backrest, manual horizontal/height adjustments
- Uniform interior lighting

## Exterior

- 19" x 11" rear Carrera S II aluminum wheels
- 19" x 8" front Carrera S II aluminum wheels
- P235/35ZR19 summer high performance front tires
- P295/30ZR19 summer high performance rear tires- Aluminum trunk lid
- Automatic extending rear spoiler
- Bi-xenon headlights -inc: headlight leveling, washers, welcome home function
- Black brake calipers- Front air dam w/black intakes- Full underbody paneling
- LED lights -inc: tail lights, brake lights- Pwr folding cabriolet top -inc: wind deflector
- Pwr heated mirrors
- Rain-sensing front wipers -inc: heated washer nozzles & delay control

## Safety

- 3-spoke leather-wrapped tilt/telescopic steering wheel- Alarm system
- Aluminum painted interior trim- Anti-theft system
- Automatic climate control -inc: active carbon filter- Aux pwr outlet- Cruise control
- Door entry guards w/model logo- Dual front cup holders- Front footwell lighting
- HomeLink system- Illuminated visor vanity mirrors
- Keyless entry -inc: remote trunk release- Leather-wrapped gear lever & handbrake
- Pwr windows -inc: auto up/down, anti-jamming feature- Rear window defogger
- Split-folding rear seats
- Standard seats -inc: driver & passenger pwr backrest, manual horizontal/height adjustments
- Uniform interior lighting

## Mechanical

- 6-speed manual transmission
- 3.8L horizontally-opposed DOHC DI 24V 6-cyl engine -inc: dry sump lubrication, oil cooler
- Double inertia flywheel- Front/rear stabilizer bars
- Porsche active suspension management (PASM) -inc: active management of suspension firmness, 10mm ride height reduction
- Pwr 4-wheel vented disc brakes -inc: 4-piston front/rear monobloc brake calipers
- Pwr rack & pinion steering- Rear wheel drive
- Stainless steel exhaust system w/2 brushed steel tail pipes
- Vario-Cam Plus variable valve timing system

## 7-SPEED PORSCHE DOPPELKUPPLUNG (PDK) AUTOMATIC TRANSMISSION

-inc: double clutch w/manual steering wheel speedshift **\$4,080**

## ALUMINUM DRIVER SIDE FOOT REST

**\$250**

## AUTO-DIMMING MIRRORS

-inc: interior & exterior mirrors **\$420**

## BLUETOOTH

**\$695**

## BOSE HIGH END SOUND PKG

-inc: 5.1 surround sound, (12) speakers, (7) channel amp, 385-watts, auto tone/volume compensation **\$1,440**

## DRIVER & PASSENGER VENTILATED SEATS

**\$800**

## DYNAMIC CORNERING LIGHTS

**\$690**

## FRONT & REAR INTERIOR COLOR FLOOR MATS

**\$150**

## LID OF STORAGE BIN IN ALCANTARA W/PORSCHE LOGO

**\$490**

## MULTI-STAGE HEATED FRONT SEATS

**\$510**

## PCM NAVIGATION MODULE

-inc: 40GB HDD, dynamic route calculation, extended navigation **\$2,110**

## PORSCHE CREST IN HEADREST

**\$285**

## PWR SEAT PKG

-inc: driver & passenger pwr comfort seats, driver seat & mirror memory, driver & passenger lumbar support adjustments **\$1,550**

## SPORT CHRONO PKG PLUS

-inc: analog & digital chronometer, sport button in center console, ability to adjust lighting, wipers, air cond & door locking to personal preference **\$1,320**

## STAINLESS STEEL DOOR ENTRY GUARDS W/MODEL LOGO

**\$415**

## UNIVERSAL AUDIO INTERFACE

-inc: connections for iPod, USB for memory stick w/MP3 files, aux input **\$440**

## WHEEL CAPS W/COLORED CREST

**\$185**

## XM RADIO

-inc: 3-month subscription service **\$750**

## BASALT BLACK METALLIC

**\$710**

STANDARD PAINT

SAND BEIGE, STANDARD LEATHER TRIM

BLACK (TOP)

Option Packages Total

\$17,290



Auto Park Dallas

View this car on our website at [autoparkdallas.com/7018314](https://autoparkdallas.com/7018314)

Website: [autoparkdallas.com](https://autoparkdallas.com)

Phone: (214) 945-2601

Map: 2061 S Stemmons Fwy, Lewisville, TX 75067



