



2013 Buick Enclave Leather

Our Price \$14,995

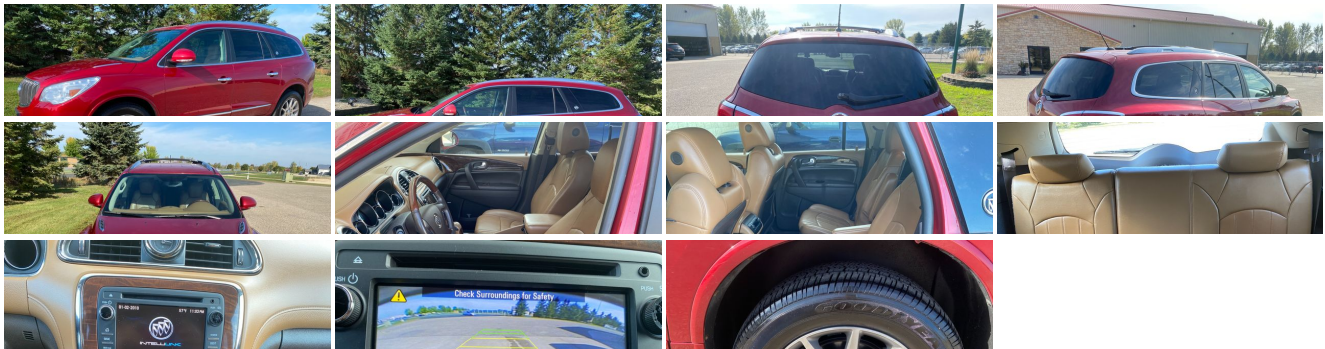
View this vehicle on our website at dakotamotor.com



(651) 460-6655

22098 Canton Court , Farmington, MN 55024

Photos
Details
Contact



Specifications:

Year: 2013
VIN: 5GAKVCKD1DJ252952

Make:	Buick
Model/Trim:	Enclave Leather
Condition:	Pre-Owned
Body:	SUV
Exterior:	Crystal Red Tintcoat
Engine:	ENGINE, 3.6L VARIABLE VALVE TIMING V6 WITH SIDI (SPARK IGNITION DIRECT INJECTION), DOHC
Interior:	Tan Leather
Mileage:	115,105
Drivetrain:	All Wheel Drive
Economy:	City 16 / Highway 22

Vehicle Description

LEATHER!!THIRD ROW SEATING!!ALL WHEEL DRIVE!!BACK UP CAM!!

Check out our full line of inventory at DAKOTAMOTOR.COM

Call us anytime and ask for Bart or David and we will be happy to assist you. For your convenience please call before you come to be certain of availability. Full financing available. All of our vehicles have been checked by our in house service department. All of our vehicles are clean title and have actual miles. Enjoy our low overhead low price philosophy. We buy in bulk and sell at wholesale cost to save you the new car store markup!! 30years in wholesaling makes us retailing's smartest choice for a price savvy saver.

Installed Options

Interior

- Cruise control- Door locks, power programmable with lockout protection
- Floor mats, carpeted front, second and third row
- Memory settings, memory "presets" for 2 drivers, with 8-way power driver seat includes easy exit driver seat, power outside mirrors, and power tilt and telescopic steering column (if equipped)
- Perforated Leather Seating Surface- Remote Keyless Entry, extended-range
- Seat adjuster, driver 8-way power with power recline and lumbar control and memory
- Seating, 7-passenger second-row captain's chairs, flat folding and SmartSlide access to third row, third row flat folding 60/40 split bench
- Steering wheel controls, mounted audio controls and cruise controls
- Air conditioning, tri-zone automatic climate control with individual climate settings for driver and right front passenger and rear seat occupants
- Defogger, rear-window electric- Glovebox, locking, passenger-side of instrument panel
- Instrumentation includes Driver Information Center, tachometer, speedometer, fuel, coolant temperature, battery, gear selector, outside air temperature and (U80) compass display
- Instrumentation, analog with mpg speedometer and tachometer
- Instrumentation, engine oil life monitor- Mirror, inside rearview auto-dimming
- Remote vehicle starter system
- Seat adjuster, passenger 8-way power with power recliner and 2- way power lumbar
- Seats, heated driver and front passenger - Steering column, tilt and telescopic
- Steering wheel, leather-wrapped with Mahogany wood accents
- Storage system, rear cargo area under floor
- Theft-deterrent system, vehicle, PASS-Key III, engine immobilizer with content theft alarm
- Universal Home Remote, includes garage door opener, 3-channel programmable
- Visors, driver and front passenger illuminated vanity mirrors
- Windows, power with driver Express-Up and -Down features, passenger Express-Down feature

Exterior

- Headlamp control, automatic on and off
- Mirrors, outside heated power-adjustable, body-color, manual-folding with integrated turn signal indicators (Includes driver side memory feature.)
- Tires, P255/60R19-108S all-season, blackwall, Michelin
- Wheel, 17" (43.2 cm) compact steel spare wheel and tire (Not available or included with (V92) Trailering Provision Package.)
- Wheels, 4 - 19" x 7.5" (48.3 cm x 19.1 cm) aluminum
- Glass, Solar-Ray deep-tinted, rear-side, quarter panel and liftgate

Option Packages

Factory Installed Packages

ENGINE, 3.6L VARIABLE VALVE TIMING V6 WITH SIDI (SPARK IGNITION DIRECT INJECTION), DOHC
(288 hp [214.7 kW] @ 6300 rpm, 270 lb-ft of torque [364.5 N-m] @ 3400 rpm)

- Headlamps, High-Intensity Discharge (HID) Xenon, projector lamps hi/low bi-functional with blue tint lenses and chromed bezels
- Liftgate, rear power- Luggage rack side rails, roof-mounted, chromed
- Wiper, rear intermittent with washer
- Wipers, front intermittent with structureless wiper blades

Safety

- Cruise control- Door locks, power programmable with lockout protection
- Floor mats, carpeted front, second and third row
- Memory settings, memory "presets" for 2 drivers, with 8-way power driver seat includes easy exit driver seat, power outside mirrors, and power tilt and telescopic steering column (if equipped)
- Perforated Leather Seating Surface- Remote Keyless Entry, extended-range
- Seat adjuster, driver 8-way power with power recline and lumbar control and memory
- Seating, 7-passenger second-row captain's chairs, flat folding and SmartSlide access to third row, third row flat folding 60/40 split bench
- Steering wheel controls, mounted audio controls and cruise controls
- Air conditioning, tri-zone automatic climate control with individual climate settings for driver and right front passenger and rear seat occupants
- Defogger, rear-window electric- Glovebox, locking, passenger-side of instrument panel
- Instrumentation includes Driver Information Center, tachometer, speedometer, fuel, coolant temperature, battery, gear selector, outside air temperature and (U80) compass display
- Instrumentation, analog with mpg speedometer and tachometer
- Instrumentation, engine oil life monitor- Mirror, inside rearview auto-dimming
- Remote vehicle starter system
- Seat adjuster, passenger 8-way power with power recliner and 2- way power lumbar
- Seats, heated driver and front passenger - Steering column, tilt and telescopic
- Steering wheel, leather-wrapped with Mahogany wood accents
- Storage system, rear cargo area under floor
- Theft-deterrent system, vehicle, PASS-Key III, engine immobilizer with content theft alarm
- Universal Home Remote, includes garage door opener, 3-channel programmable
- Visors, driver and front passenger illuminated vanity mirrors
- Windows, power with driver Express-Up and -Down features, passenger Express-Down feature

Mechanical

- Transmission, 6- speed automatic, electronically controlled with overdrive
- All-wheel drive- Alternator, 170 amps- Axle, 3.16 ratio, final drive
- Engine, 3.6L Variable Valve Timing V6 with SIDI (Spark Ignition Direct Injection), DOHC (288 hp [214.7 kW] @ 6300 rpm, 270 lb-ft of torque [364.5 N-m] @ 3400 rpm)
- Exhaust, dual-outlet stainless-steel with bright tips integrated in fascia
- GVWR, 6459 lbs. (2930 kg)- Steering, power, variable effort
- Suspension, Premium Ride, 4-wheel independent
- Trailing provisions, 2000 lbs. (907 kg)

Dakota Motor Company

Dakota Motor Company

View this car on our website at dakotamotor.com/7016345

Website: dakotamotor.com

Phone: (651) 460-6655

Map: [22098 Canton Court, Farmington, MN 55024](#)

