

2015 Cadillac SRX Base

Danny Diedrich 602-513-3298

View this car on our website at arizonaclassiccarsales.com/7014860/ebrochure

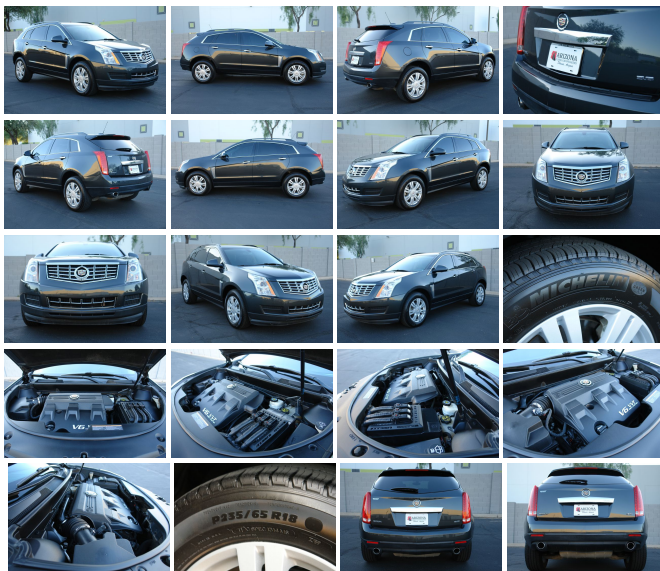


Our Price **\$22,950**

Retail Value ~~\$24,950~~

Specifications:

Year:	2015
VIN:	3GYFNAE39FS634004
Make:	Cadillac
Stock:	634004
Model/Trim:	SRX Base
Condition:	Pre-Owned
Body:	SUV
Exterior:	Graphite Metallic
Engine:	ENGINE, 3.6L SIDI DOHC V6 VVT
Interior:	Ebony w/Ebony Accents
Mileage:	64,075
Drivetrain:	Front Wheel Drive
Economy:	City 17 / Highway 24



Arizona Classic Car Sales is thrilled to offer this *2015 Cadillac SRX* in Graphite Metallic over Ebony leather interior. V-6, Automatic, Power Windows, Power Door Locks, Remote Start, Bose Radio, Clean Car-Fax, Tinted Glass AND MORE..!!

Please don't hesitate to call or text anytime with any questions..!!

602-513-3298


Vehicle History Report : as Of 11/29/2021

CARFAX Logo


Snapshot


2015 CADILLAC SRX


No accidents or damage reported to CARFAX


2 Previous owners


At least 1 open recall


18 Service history records


Types of owners: Personal lease, Personal


60,036 Last reported odometer reading



FREE CARFAX Report

See the full CARFAX Report for additional information

*carfax Snapshot is a reflection of available information on the date the report was pulled. carfax is constantly being updated with new information and is subject to change at any time.

Our Location :

□

2015 Cadillac SRX Base

Arizona Classic Car Sales - 602-513-3298 - View this car on our website at arizonaclassiccarsales.com/7014860/ebrochure

Installed Options

Interior

- Armrest, front center, fore/aft, sliding- Armrest, rear center with dual cup holders
- Cadillac CUE (Cadillac User Experience) Information and Media Control System 8" display featuring touch response, haptic feedback, gesture recognition, proximity sensing, articulating storage door/bin, clock display and compass feature
- Climate control, dual-zone automatic with individual climate settings for driver and front passenger
- Console, center includes armrest, storage bin, storage tray and dual cupholders
- Console, front floor with floor shifter, armrest and dual storage compartment
- Console, overhead with sunroof switch (if equipped), Universal Home Remote (if equipped) and Front and Rear Parking Assist indicator (if equipped)
- Console, rear floor- Cruise control, electronic with set and resume speed
- Defogger, rear-window electric with front and side window outlets for the driver and right-front passenger
- Door locks, power programmable includes lockout protection and delayed locking
- Floor mats, carpeted front and rear- Fuel gauge, analog
- Gauge cluster includes color Driver Information Center
- Instrumentation, analog with speedometer, tachometer, engine temperature and fuel gauge with color Driver Information Center
- Mirror, inside PRISM includes OnStar controls- Remote Keyless Entry

- Seat adjuster, front passenger 4-way manual- Seat trim, leatherette seating surfaces
- Seat, rear 60/40 split-folding with recline- Seat, rear pass-through
- Seats, front bucket includes 8-way power driver seat adjuster
- Steering column, manual rake and telescopic
- Steering wheel controls, mounted controls for audio, cruise and Cadillac CUE
- Steering wheel, leather-wrapped 3-spoke- Theft-deterrent alarm system
- Theft-deterrent system, vehicle, PASS-Key III+
- Visors, driver and front passenger illuminated vanity mirrors
- Windows, power front express-up and down, rear express-down and remote express down feature for all windows

Exterior

- Glass, Solar-Ray tinted, laminated front windows
- Headlamps, halogen Tungsten, windshield wiper-activated with Twilight Sentinel and night-time flash-to-pass feature
- Lamps, side marker with LED light pipes
- Mirrors, outside heated power-adjustable, body-color, manual-folding- Roof rails, Black
- Tire inflation kit
- Tires, P235/65R18 H-rated all-season, blackwall (Deleted when any 20" LPO wheels are ordered.)
- Wheels, 18" x 8" (45.7 cm x 20.3 cm) painted cast aluminum (Deleted when any 20" LPO wheels are ordered.)
- Wipers, front intermittent

Safety

- Armrest, front center, fore/aft, sliding- Armrest, rear center with dual cup holders
- Cadillac CUE (Cadillac User Experience) Information and Media Control System 8" display featuring touch response, haptic feedback, gesture recognition, proximity sensing, articulating storage door/bin, clock display and compass feature
- Climate control, dual-zone automatic with individual climate settings for driver and front passenger
- Console, center includes armrest, storage bin, storage tray and dual cupholders
- Console, front floor with floor shifter, armrest and dual storage compartment
- Console, overhead with sunroof switch (if equipped), Universal Home Remote (if equipped) and Front and Rear Parking Assist indicator (if equipped)
- Console, rear floor- Cruise control, electronic with set and resume speed
- Defogger, rear-window electric with front and side window outlets for the driver and right-front passenger
- Door locks, power programmable includes lockout protection and delayed locking
- Floor mats, carpeted front and rear- Fuel gauge, analog
- Gauge cluster includes color Driver Information Center
- Instrumentation, analog with speedometer, tachometer, engine temperature and fuel gauge with color Driver Information Center
- Mirror, inside PRISM includes OnStar controls- Remote Keyless Entry
- Seat adjuster, front passenger 4-way manual- Seat trim, leatherette seating surfaces
- Seat, rear 60/40 split-folding with recline- Seat, rear pass-through
- Seats, front bucket includes 8-way power driver seat adjuster
- Steering column, manual rake and telescopic
- Steering wheel controls, mounted controls for audio, cruise and Cadillac CUE
- Steering wheel, leather-wrapped 3-spoke- Theft-deterrent alarm system
- Theft-deterrent system, vehicle, PASS-Key III+
- Visors, driver and front passenger illuminated vanity mirrors
- Windows, power front express-up and down, rear express-down and remote express down feature for all windows

Mechanical

- Battery, maintenance-free with rundown protection
- Brakes, 4-wheel antilock, 4-wheel vented disc- Drivetrain, front-wheel drive
- Engine, 3.6L SIDI DOHC V6 VVT (308 hp [229.7 kW] @ 6800 rpm, 265 lb-ft of torque [357.8 N-m] @ 2400 rpm)
- Exhaust, dual stainless-steel with chrome tips- Final Drive Ratio 3.39:1
- Steering, power, rack-and-pinion- Suspension, 4-wheel independent
- Transmission, 6-speed automatic, FWD, 6T70 with tap-up/tap-down (on shifter), performance shifting and manual-up/manual-down

Option Packages

Factory Installed Packages

- _____
 PRISM 2.0L SIDI 4-CYL V4 VTEC

ENGINE, 3.6L SIDI DOHC V6 VVI
(308 hp [229.7 kW] @ 6800 rpm,
265 lb-ft of torque [357.8 N-m]
@ 2400 rpm)

Arizona Classic Car Sales
arizonaclassiccarsales.com
602-513-3298
2010 W. Parkside Ln. #118
Phoenix, AZ 85027

© 2021 AutoRevo - All rights reserved. - Powered by [AutoRevo](#)