

2011 Chevrolet Camaro 1LT

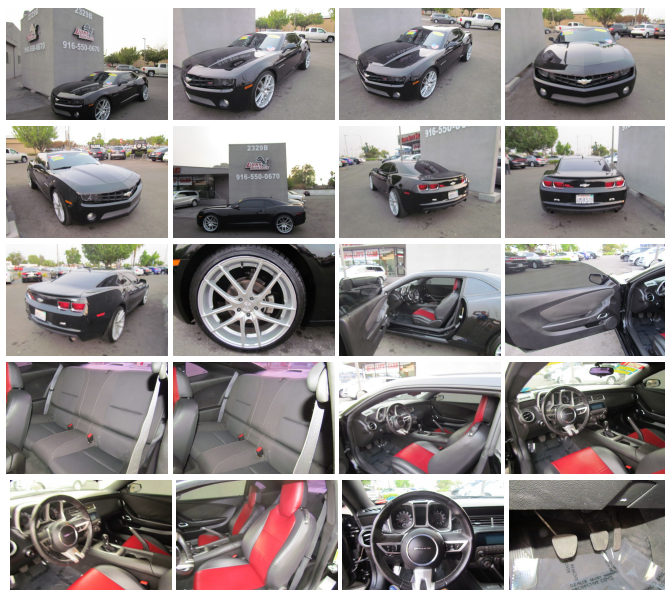
View this car on our website at lionsautosales.net/7013393/ebrochure



Our Price **\$12,450**

Specifications:

Year:	2011
VIN:	2G1FF1ED5B9112806
Make:	Chevrolet
Stock:	112806
Model/Trim:	Camaro 1LT
Condition:	Pre-Owned
Body:	Coupe
Exterior:	Black
Engine:	ENGINE, 3.6L VARIABLE VALVE TIMING V6 WITH SIDI (SPARK IGNITION DIRECT INJECTION)
Interior:	Black Cloth
Mileage:	135,835
Drivetrain:	Rear Wheel Drive
Economy:	City 17 / Highway 28



2011 Chevrolet Camaro 1LT

Lions Auto Sales - (916) 550-0670 - View this car on our website at lionsautosales.net/7013393/ebrochure

Our Location :



2011 Chevrolet Camaro 1LT

Lions Auto Sales - (916) 550-0670 - View this car on our website at lionsautosales.net/7013393/ebrochure

Installed Options

Interior

- Air conditioning, single-zone manual- Air filtration system with pollen filter
- Coat hooks, driver- and passenger-side rear
- Compass, located in Driver Information Center- Console, floor, with armrest
- Cruise control, electronic with set and resume speed, steering wheel mounted
- Cup holders, 2 front- Dead pedal, driver- Defogger, rear-window, electric
- Door locks, power programmable with lockout protection- Floor mats, carpeted front
- Glovebox, lockable
- Instrumentation, analog with Driver Information Center display, includes speedometer, tachometer, fuel gauge and engine temperature gauge
- Lighting, front reading lamps
- Lighting, interior dome with illuminated entry and theater dimming
- Map pockets, front doors- Mirror, inside rearview manual day/night
- Power outlets, 2 auxiliary 1 located in center console storage area and 1 located at front of center console
- Remote Keyless Entry
- Seat adjuster, driver, 6-way power (fore/aft, up/down, tilt) with power recliner
- Seat adjuster, front passenger 2-way manual (fore/aft) with power recliner
- Seat trim, Sport Cloth seat trim
- Seats, front Sport bucket includes adjustable head restraints and folding rear seat with trunk pass-through (Includes passenger-side seatback map pocket.)
- Shift knob, urethane- Steering column, manual rake and telescopic
- Steering wheel, 3-spoke, urethane- Theft-deterrent system, PASS-Key III
- Trunk release, remote, located on driver-side
- Visors, driver and front passenger vanity mirrors, covered
- Windows, power with driver and passenger Express-Down/Up

Exterior

- Door handles, body-color

- Fascias, front and rear body-color with front grille and rear airuser
- Fog lamps (When (WRS) RS Package is ordered, fog lamps act as Daytime Running Lamps.)
- Headlamps, halogen composite with automatic exterior lamp control
- Hood blanket with debossed Chevrolet bowtie
- Mirrors, outside power-adjustable body-color- Molding, Black roof ditch
- Moldings, body-color lower rocker- Tire sealant and inflator kit in place of spare tire
- Tires, P245/55R18 touring, blackwall, all-season
- Wheels, 18" (45.7 cm) painted aluminum- Wipers, front intermittent

Safety

- Air conditioning, single-zone manual- Air filtration system with pollen filter
- Coat hooks, driver- and passenger-side rear
- Compass, located in Driver Information Center- Console, floor, with armrest
- Cruise control, electronic with set and resume speed, steering wheel mounted
- Cup holders, 2 front- Dead pedal, driver- Defogger, rear-window, electric
- Door locks, power programmable with lockout protection- Floor mats, carpeted front
- Glovebox, lockable
- Instrumentation, analog with Driver Information Center display, includes speedometer, tachometer, fuel gauge and engine temperature gauge
- Lighting, front reading lamps
- Lighting, interior dome with illuminated entry and theater dimming
- Map pockets, front doors- Mirror, inside rearview manual day/night
- Power outlets, 2 auxiliary 1 located in center console storage area and 1 located at front of center console
- Remote Keyless Entry
- Seat adjuster, driver, 6-way power (fore/aft, up/down, tilt) with power recliner
- Seat adjuster, front passenger 2-way manual (fore/aft) with power recliner
- Seat trim, Sport Cloth seat trim
- Seats, front Sport bucket includes adjustable head restraints and folding rear seat with trunk pass-through (Includes passenger-side seatback map pocket.)
- Shift knob, urethane- Steering column, manual rake and telescopic
- Steering wheel, 3-spoke, urethane- Theft-deterrent system, PASS-Key III
- Trunk release, remote, located on driver-side
- Visors, driver and front passenger vanity mirrors, covered
- Windows, power with driver and passenger Express-Down/Up

Mechanical

- Alternator, 150 amps- Axle, 3.27 ratio
- Battery, maintenance-free with rundown protection and retained accessory power
- Brakes, 4-wheel antilock, 4-wheel disc (Single piston front brakes with super corner rear brakes.)
- Engine, 3.6L Variable Valve Timing V6 with SIDI (Spark Ignition Direct Injection) (312 hp [232.6 kW] @ 6500 rpm, 278 lb-ft of torque [375.3 N-m] @ 5100 rpm)
- Exhaust, dual-outlet stainless-steel with polished tips- Rear wheel drive
- Steering, power, variable ratio- Suspension, Sport- Transmission, 6-speed manual

Option Packages

Factory Installed Packages

-
ENGINE, 3.6L VARIABLE VALVE TIMING
V6 WITH SIDI (SPARK IGNITION
DIRECT INJECTION)
(312 hp [232.6 kW] @ 6500 rpm,
278 lb-ft of torque [375.3 N-m]
@ 5100 rpm)

