

2003 Chevrolet Corvette Base

Danny Diedrich 602-513-3298

View this car on our website at arizonaclassiccarsales.com/7012855/ebrochure

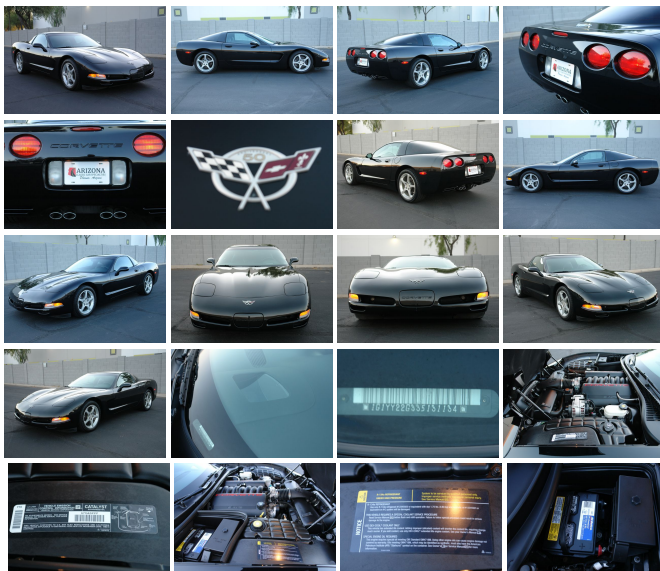


Our Price **\$26,950**

Retail Value ~~\$29,950~~

Specifications:

Year:	2003
VIN:	1G1YY22G335131134
Make:	Chevrolet
Stock:	131134
Model/Trim:	Corvette Base
Condition:	Pre-Owned
Body:	Coupe
Exterior:	Black
Engine:	ENGINE, 5.7L LS1 V8 SFI
Interior:	Black Leather
Transmission:	Automatic W/Overdrive
Mileage:	47,123
Drivetrain:	Rear Wheel Drive
Economy:	City 18 / Highway 25



Arizona Classic Car Sales is thrilled to offer this absolutely stunning 2003 50th Anniversary Corvette with under 50k miles and loaded with options... Black on Black leather, Heads Up Display, Bose Radio, Power Seats, Removable Roof, Clean Car-Fax, AND MORE..!!

Please don't hesitate to call or text anytime with any questions..!!

602-513-3298

Vehicle History Report : as Of 11/29/2021

Our Location :



Snapshot

2003 CHEVROLET CORVETTE



No accidents or damage reported to CARFAX



4 Previous owners



6 Service history records



Personal vehicle



Last owned in Arizona



46,579 Last reported odometer reading



FREE CARFAX Report

See the full CARFAX Report for additional information

*carfax Snapshot is a reflection of available information on the date the report was pulled. carfax is constantly being updated with new information and is subject to change at any time.

2003 Chevrolet Corvette Base

Arizona Classic Car Sales - 602-513-3298 - View this car on our website at arizonaclassiccarsales.com/7012855/ebrochure

Installed Options

Interior

- Air conditioning, dual-zone, automatic-inc: individual climate settings for driver & right front passenger, automatic climate control & outside temperature display
- Antenna, integral, front & rear
- Console, floor, lockable-inc: integral cupholder, ashtray, coin holder, auxiliary power outlet & cassette/CD storage
- Cruise control, electronic w/set & resume speed-inc: telltale in instrument panel cluster
- Defogger, rear-window, electric-inc: front & side window outlets, driver & front passenger
- Floor mats, carpeted- Instrumentation, analog, electronic-inc: Driver Information Center
- Keyless entry, remote-inc: panic button & trunk/hatch release
- Lighting, interior, courtesy, cargo console & glovebox
- Luggage shade-inc: cargo convenience net
- Mirror, inside rearview, manual day/night-inc: dual reading lights
- Seat adjuster, power, driver 6-way- Seat adjuster, power, front passenger 6-way
- Seats, front leather seating surfaces bucket, Sport-inc: lateral support & back angle adjustment, adjustable lumbar & side bolsters, & 6-way power driver & front passenger seats
- Sound system feature, Bose speaker & amplifier system
- Sound system, ETR AM/FM stereo w/CD player-inc: seek-& scan, digital clock, auto-tone control, speed compensated volume & Theft det

control, speed-compensated volume & TheftLock

- Steering column, Tilt-Wheel-inc: (NK4) Steering wheel, leather-wrapped rim
- Storage-inc: lockable glovebox, center console & 3 rear compartments w/covers
- Theft-deterrent alarm system- Theft-deterrent system, PASS-Key II
- Tire Pressure Monitor System- Visors, illuminated vanity mirrors, driver & front passenger
- Windows, power-inc: driver & passenger express-down

Exterior

- Daytime running lamps- Fog lamps, front, integral in fascia
- Frame, uniframe-inc: corrosion-resistant coating- Glass, Solar-Ray light tinted
- Hatch, rear, full-framed w/interior remote release
- Headlamps, halogen, power-operated retractable- Induction system, outside air
- Mirrors, outside rearview, power, heated, body-color- Paint, basecoat/clearcoat
- Roof panel, removable, 1-piece, body-color- Wipers, intermittent, front

Safety

- Air conditioning, dual-zone, automatic-inc: individual climate settings for driver & right front passenger, automatic climate control & outside temperature display
- Antenna, integral, front & rear
- Console, floor, lockable-inc: integral cupholder, ashtray, coin holder, auxiliary power outlet & cassette/CD storage
- Cruise control, electronic w/set & resume speed-inc: telltale in instrument panel cluster
- Defogger, rear-window, electric-inc: front & side window outlets, driver & front passenger
- Floor mats, carpeted- Instrumentation, analog, electronic-inc: Driver Information Center
- Keyless entry, remote-inc: panic button & trunk/hatch release
- Lighting, interior, courtesy, cargo console & glovebox
- Luggage shade-inc: cargo convenience net
- Mirror, inside rearview, manual day/night-inc: dual reading lights
- Seat adjuster, power, driver 6-way- Seat adjuster, power, front passenger 6-way
- Seats, front leather seating surfaces bucket, Sport-inc: lateral support & back angle adjustment, adjustable lumbar & side bolsters, & 6-way power driver & front passenger seats
- Sound system feature, Bose speaker & amplifier system
- Sound system, ETR AM/FM stereo w/CD player-inc: seek-&scan, digital clock, auto-tone control, speed-compensated volume & TheftLock
- Steering column, Tilt-Wheel-inc: (NK4) Steering wheel, leather-wrapped rim
- Storage-inc: lockable glovebox, center console & 3 rear compartments w/covers
- Theft-deterrent alarm system- Theft-deterrent system, PASS-Key II
- Tire Pressure Monitor System- Visors, illuminated vanity mirrors, driver & front passenger
- Windows, power-inc: driver & passenger express-down

Mechanical

- 18.0 gallon fuel tank- Active handling, improves traction & enhances vehicle stability
- Axle, 2.73 ratio, limited slip- Brakes, 4-wheel antilock, 4-wheel disc
- Engine access, rear opening hood-inc: underhood lamp
- Engine, 5.7L LS1 V8 SFI (350 HP [261.0 kW] @ 5200 rpm, 375 lb.-ft. [506.2 N-m] @ 4000 rpm for manual transmission, 360 lb.-ft. [486.0 N-m] @ 4000 rpm for automatic transmission)
- Exhaust outlets, chrome-plated tips
- Exhaust, stainless-steel, aluminized stainless-steel at rear of catalytic converter
- Rear wheel drive- Suspension, 4-wheel independent-inc: transverse fiberglass leaf springs
- Tires, front P245/45ZR17, extended mobility, Eagle F1
- Tires, rear P275/40ZR18, extended mobility, Eagle F1 - Traction control, all-speed
- Transmission, 4-speed automatic, electronically controlled w/overdrive
- Wheels, 5-spoke aluminum, 17" x 8.5" (43.2 cm x 21.6 cm), front & 18" x 9.5" (45.7 cm x 24.1 cm), rear

Option Packages

Factory Installed Packages

-
ENGINE, 5.7L LS1 V8 SFI
(350 HP [261.0 kW] @ 5200 rpm,
375 lb.-ft. [506.2 N-m] @ 4000
rpm for manual transmission,
360 lb.-ft. [486.0 N-m] @ 4000
rpm for automatic transmission)

Arizona Classic Car Sales

arizonaclassiccarsales.com

602-513-3298

2010 W. Parkside Ln. #118

Phoenix, AZ 85027

© 2021 AutoRevo - All rights reserved. - Powered by [AutoRevo](#)