

parksdeals.com  
833-825-2763  
615 NC-66 South  
Kernersville, NC  
27284

Parks Chevrolet,  
Inc.

## 2019 Chevrolet Corvette Grand Sport 2LT

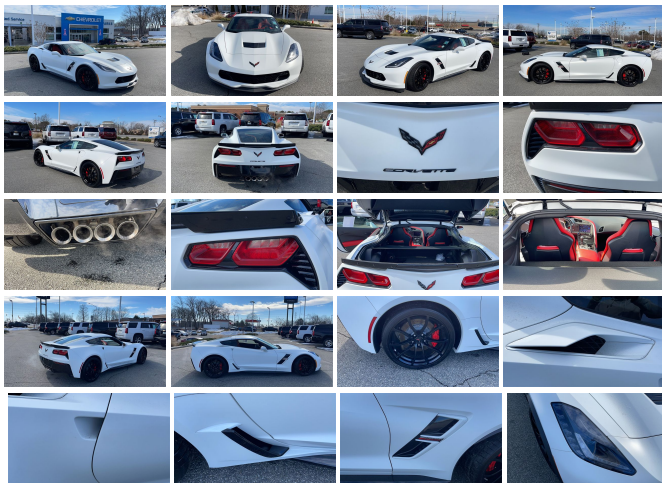
View this car on our website at [parksdeals.com/7012075/ebrochure](https://parksdeals.com/7012075/ebrochure)



Our Price **\$68,990**

## Specifications:

<b>Year:</b>	2019
<b>VIN:</b>	1G1YX2D75K5124684
<b>Make:</b>	Chevrolet
<b>Stock:</b>	9K6094
<b>Model/Trim:</b>	Corvette Grand Sport 2LT
<b>Condition:</b>	Pre-Owned
<b>Body:</b>	Coupe
<b>Exterior:</b>	Arctic White
<b>Engine:</b>	ENGINE, 6.2L (376 CI) V8 DI
<b>Interior:</b>	Adrenaline Red Leather
<b>Mileage:</b>	5,135
<b>Drivetrain:</b>	Rear Wheel Drive
<b>Economy:</b>	City 15 / Highway 25



Certified. Chevrolet Certified Pre-Owned Details:

- \* 172 Point Inspection
- \* 24 months/24,000 miles (whichever comes first) CPO Scheduled Maintenance Plan and 3 days/150 miles (whichever comes first) Vehicle Exchange Program. SiriusXM 3-month trial subscription.
- \* Warranty Deductible: \$0
- \* Powertrain Limited Warranty: 72 Month/100,000 Mile (whichever comes first) from original in-service date
- \* Roadside Assistance
- \* Vehicle History
- \* Limited Warranty: 12 Month/12,000 Mile (whichever comes first) from certified purchase date
- \* Transferable Warranty

Parks Chevrolet in Kernersville, NC ! We offer low payment - easy financing on everything ! We sell in volume and that saves you money!!

2019 Arctic White Chevrolet Corvette CARFAX One-Owner. Clean CARFAX. MUST SEE, CERTIFIED, ONE OWNER, CLEAN CARFAX, HEADS UP DISPLAY, 2LT, ONLY AT PARKS CHEVROLET KERNERSVILLE, 336-992-2000, Auto-Dimming Inside Frameless Rearview Mirror, Body-Color Outside Heated Power-Adjustable Mirrors, Bose Advanced 10-Speaker Audio System Feature, Carbon Flash Badge Package, Cargo Net, Front Curb View Cameras, Head-Up Display, Heated & Vented Driver & Front Passenger Seats, Luggage Shade, Memory Package, Power Lumbar/Bolster Seat Adjusters, Preferred Equipment Group 2LT, SiriusXM Radio, Theft Deterrent System, Universal Home Remote.

\$1000 - Dealer Trade-in Allowance (Must own and trade a 2014 or newer passenger vehicle to qualify for the Dealer Trade-in Allowance), Allowance is \$1000 above True Car Cash Offer. This offer is based on the current condition of the vehicle and must be appraised at the Dealership to receive the Trade-In Allowance. \$1000 - Dealer Finance Discount (Must qualify and finance with GM Financial, not available with special financing rates or programs.) Price does not include tax, tag, and fees.

## Vehicle History Report : as Of 04/19/2024



### Snapshot

## 2019 CHEVROLET CORVETTE GRAND SPORT



No accidents or damage reported to CARFAX



8 Service history records



6 Previous owners



Personal vehicle



Last owned in North Carolina



14,411 Last reported odometer reading



**FREE CARFAX Report**

See the full CARFAX Report for additional information

\*carfax Snapshot is a reflection of available information on the date the report was pulled. carfax is constantly being updated with new information and is subject to change at any time.

## Our Location :



## 2019 Chevrolet Corvette Grand Sport 2LT

Parks Chevrolet, Inc. - 833-825-2763 - View this car on our website at [parksdeals.com/7012075/ebrochure](http://parksdeals.com/7012075/ebrochure)

## Installed Options

### Interior

- Seats, GT bucket- Perforated Mulan leather seating surfaces
- Console, floor 2 covered cup holders, auxiliary power outlet, USB ports, auxiliary input jack and storage
- Floor mats, carpeted- Steering column, power tilt and telescopic
- Door locks, power programmable with lockout protection
- Keyless Open and Start includes 2 remote transmitters that enable automatic door unlock and open by touching door switch
- Memory Package, recalls 2 driver "presets" for 8-way power seat, outside mirrors and tilt/telescoping steering column
- Theft-deterrent system, vehicle, push button start, immobilizer and audible visual alarm
- Theft-deterrent system, body security content and unauthorized entry electrical
- Luggage shade
- 2LT interior trim seats, console, door armrests and instrument panel brow in interior color selected
- Seat adjusters, driver and passenger 8-way
- Seat adjusters, power bolster and power lumbar
- Seats, heated and vented driver and front passenger
- Steering wheel, 3-spoke leather-wrapped, flat-bottom
- Steering wheel controls, audio, voice recognition and Driver Information Center

## Option Packages

### Factory Installed Packages

ENGINE, 6.2L (376 CI) V8 DI  
(460 hp [343 kW] @ 6000 rpm, 465 lb-ft of torque  
[627.8 N-m] @ 4600 rpm)

- Head-Up Display with color readouts for street mode, track mode with g-meter, vehicle speed, engine rpm
- Driver Information Center, color- Oil life monitoring system
- Windows, power with driver and passenger Express-Down/Up
- Cruise control, electronic with set and resume speed
- Universal Home Remote includes garage door opener, 3-channel programmable, located on driver visor
- Hatch release, push button open
- Air conditioning, dual-zone automatic climate control with individual climate settings for driver and dedicated passenger controls and outside temperature display
- Air filtration system with pollen filter- Defogger, rear-window, electric
- Mirror, inside rearview auto-dimming, frameless
- Visors, driver and passenger illuminated vanity mirrors
- Lighting, interior with courtesy, cargo and glovebox
- Storage, with electric locking glovebox, behind screen storage, center console and rear compartment with cover
- Cargo net

---

## Exterior

- Wheels, Grand Sport Pearl Nickel-painted aluminum 19" x 10" (48.3 cm x 25.4 cm) front and 20" x 12" (50.8 cm x 30.48 cm) rear
- Tires, front P285/30ZR19 and rear P335/25ZR20 Michelin Pilot Super Sport summer-only, run-flat (Do not use summer only tires in winter conditions, as it would adversely affect vehicle safety, performance and durability. Use only GM-approved tire and wheel combinations. Unapproved combinations may change the vehicle's performance characteristics. For important tire and wheel information, go to <https://my.chevrolet.com/learnAbout/chevrolettires> or see your dealer.)
- Engine access, rear-opening hood
- Roof panel, carbon fiber, painted body-color, removable- Chrome Badge Package
- Vents, exterior, carbon flash
- Headlamps, high intensity discharge (HID), Xenon LED park and turn signals and Daytime Running Lamps
- Mirrors, outside heated power-adjustable and driver-side auto-dimming, body-color
- Glass, Solar-Ray light-tinted- Wipers, front intermittent

---

## Safety

- Seats, GT bucket- Perforated Mulan leather seating surfaces
- Console, floor 2 covered cup holders, auxiliary power outlet, USB ports, auxiliary input jack and storage
- Floor mats, carpeted- Steering column, power tilt and telescopic
- Door locks, power programmable with lockout protection
- Keyless Open and Start includes 2 remote transmitters that enable automatic door unlock and open by touching door switch
- Memory Package, recalls 2 driver "presets" for 8-way power seat, outside mirrors and tilt/telescoping steering column
- Theft-deterrent system, vehicle, push button start, immobilizer and audible visual alarm
- Theft-deterrent system, body security content and unauthorized entry electrical
- Luggage shade
- 2LT interior trim seats, console, door armrests and instrument panel brow in interior color selected
- Seat adjusters, driver and passenger 8-way
- Seat adjusters, power bolster and power lumbar
- Seats, heated and vented driver and front passenger
- Steering wheel, 3-spoke leather-wrapped, flat-bottom
- Steering wheel controls, audio, voice recognition and Driver Information Center
- Head-Up Display with color readouts for street mode, track mode with g-meter, vehicle speed, engine rpm
- Driver Information Center, color- Oil life monitoring system
- Windows, power with driver and passenger Express-Down/Up
- Cruise control, electronic with set and resume speed
- Universal Home Remote includes garage door opener, 3-channel programmable, located on driver visor
- Hatch release, push button open
- Air conditioning, dual-zone automatic climate control with individual climate settings for driver and dedicated passenger controls and outside temperature display
- Air filtration system with pollen filter- Defogger, rear-window, electric
- Mirror, inside rearview auto-dimming, frameless
- Visors, driver and passenger illuminated vanity mirrors
- Lighting, interior with courtesy, cargo and glovebox
- Storage, with electric locking glovebox, behind screen storage, center console and rear compartment with cover
- Cargo net

---

## Mechanical

- Transmission, 7-speed manual with Active Rev Matching with Z51 performance ratios
- Rear axle, 3.42 ratio, electronic limited slip (eLSD)- Differential, electronic limited slip, rear
- Suspension, Performance Ride and Handling with Magnetic Selective Ride Control
- Brakes, 4-wheel antilock, 4-wheel disc
- Engine, 6.2L (376 ci) V8 DI (460 hp [343 kW] @ 6000 rpm, 465 lb-ft of torque [627.8 N-m] @ 4600 rpm)
- Dry sump oil system- Cooler, rear differential- Rear wheel drive
- Frame, aluminum structure
- Steering, power, speed-sensitive rack-and-pinion, variable ratio- Calipers, Black-painted
- Exhaust, performance aggressive exhaust sound, with 4" polished stainless-steel tips

---

Parks Chevrolet, Inc.

[parksdeals.com](http://parksdeals.com)

833-825-2763

615 NC-66 South

Kernersville, NC 27284

© 2024 AutoRevo - All rights reserved. - Powered by AutoRevo