

# 2015 Chevrolet Express Cargo Van

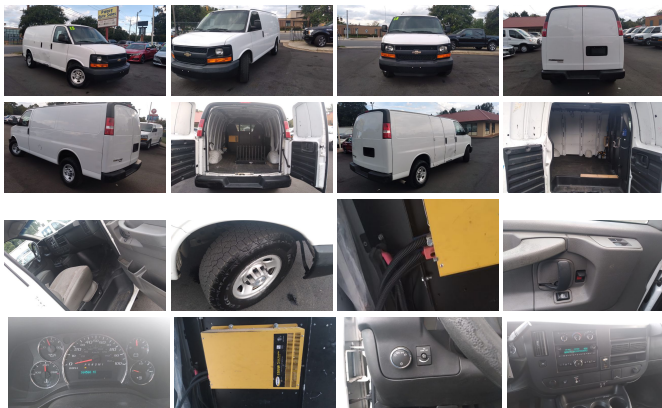
View this car on our website at [palaceautosales.com/7011756/ebrochure](http://palaceautosales.com/7011756/ebrochure)



Our Price **\$17,990**

## Specifications:

<b>Year:</b>	2015
<b>VIN:</b>	1GCWGF1F1261178
<b>Make:</b>	Chevrolet
<b>Stock:</b>	P14409
<b>Model/Trim:</b>	Express Cargo Van
<b>Condition:</b>	Pre-Owned
<b>Body:</b>	Minivan/Van
<b>Exterior:</b>	Summit White
<b>Engine:</b>	ENGINE, VORTEC 4.8L V8 SFI
<b>Interior:</b>	Gray
<b>Transmission:</b>	Automatic
<b>Mileage:</b>	164,549
<b>Drivetrain:</b>	Rear Wheel Drive



PRICES LISTED ARE CASH PRICES; FINANCING AVAILABLE. FOR YOUR CONVENIENCE, NO-HAGGLE PRICING. Prices listed exclude additional applicable fees. FOR MORE PICTURES AND DETAILS LOG ONTO OUR WEBSITE: [WWW.PALACEAUTOSALES.COM](http://WWW.PALACEAUTOSALES.COM)

2015 Chevrolet Express Cargo Van

Palace Auto Sales - (704) 921-6700 - View this car on our website at [palaceautosales.com/7011756/ebrochure](http://palaceautosales.com/7011756/ebrochure)

## Vehicle History Report : as Of 10/17/2021

**CARFAX**

Snapshot

**2015 CHEVROLET EXPRESS G2500**

Damage reported: minor damage

MINOR MODERATE SEVERE

2 Previous owners

22 Service history records

Commercial vehicle

164,549 Last reported odometer reading

**FREE CARFAX Report**

See the full CARFAX Report for additional information

\*carfax Snapshot is a reflection of available information on the date the report was pulled. carfax is constantly being updated with new information and is subject to change at any time.

## Our Location :



2015 Chevrolet Express Cargo Van

Palace Auto Sales - (704) 921-6700 - View this car on our website at [palaceautosales.com/7011756/ebrochure](http://palaceautosales.com/7011756/ebrochure)

## Installed Options

### Interior

- Air conditioning, single-zone manual- Assist handle, front passenger
- Console, engine cover with open storage bin
- Cup holders, 3 on the engine console cover - Defogger, side windows
- Door locks, power with lock-out protection (NOTE: Does not include (ATG) Remote Keyless Entry. (ATG) Remote Keyless Entry must be ordered separately.)
- Driver Information Center includes fuel range, average speed, oil life, tire pressure monitoring, fuel used, ice warning, engine hours, average fuel economy, tachometer, and maintenance reminders. Compass and outside temperature available if equipped. (When (FHZ) Dedicated Compressed Natural Gas (CNG) system is ordered, includes average speed, oil life, tire pressure monitoring, ice warning, engine hours, tachometer and maintenance reminders. Compass and outside temperature available if equipped.)
- Floor covering, full-length Black rubberized-vinyl (Not available with (YF2) Ambulance Package or (RFM) rear floor covering delete.)
- Headliner, cloth, over driver and passenger
- Instrumentation, analog with speedometer, odometer with trip odometer, fuel level, voltmeter, engine temperature and oil pressure
- Lighting, interior with 4 dome lights 1 overhead and 3 LED's on cross members in cargo area, includes defeat switch and door handle-activated switches (When (UF2) Express Access Enhanced Lighting Package is ordered, 2 LED lights are replaced with fluorescent lights.)
- Oil life monitor- Power outlet, 120-volt
- Power outlets, 2 auxiliary on engine console cover with covers, 12-volt
- Seating arrangement, driver and front passenger high-back buckets with head restraints

- and vinyl or cloth trim (Not available with (AJ3) driver-side only frontal air bag.)
- Seats, front bucket with vinyl trim and outboard head restraints, includes inboard armrests. (Requires (\*\*W) interior trim.)
- Steering wheel, steel sleeve column with theft-deterrent locking feature, Black
- Theft-deterrent system, vehicle, PASS-Key III
- Tow/haul mode selector, instrument panel-mounted
- Trim panels, hinged rear side doors and hinged rear doors
- Visors, driver and front passenger, cloth, padded
- Warning tones, headlamp on and key-in-ignition

---

## Exterior

- Bumpers, front and rear painted Black with step-pad (Deleted when (ZR7) Chrome Appearance Package is ordered.)
- Door, swing-out passenger-side, 60/40 split - Glass, Solar-Ray light-tinted, all windows
- Grille, Black composite with single rectangular halogen headlamps (Not available with (ZR7) Chrome Appearance Package.)
- Headlamps, single halogen (Not available with (ZR7) Chrome Appearance Package.)
- License plate kit, front- Mirrors, outside manual, Black
- Tire, spare LT245/75R16E all-season, blackwall located at rear underbody of vehicle
- Tires, front LT245/75R16E all-season, blackwall
- Tires, rear LT245/75R16E all-season, blackwall
- Wheels, 4 - 16" x 6.5" (40.6 cm x 16.5 cm) steel includes Gray center caps and steel spare
- Wipers, front intermittent wet-arm with pulse washers

---

## Safety

- Air conditioning, single-zone manual- Assist handle, front passenger
- Console, engine cover with open storage bin
- Cup holders, 3 on the engine console cover - Defogger, side windows
- Door locks, power with lock-out protection (NOTE: Does not include (ATG) Remote Keyless Entry. (ATG) Remote Keyless Entry must be ordered separately.)
- Driver Information Center includes fuel range, average speed, oil life, tire pressure monitoring, fuel used, ice warning, engine hours, average fuel economy, tachometer, and maintenance reminders. Compass and outside temperature available if equipped. (When (FHZ) Dedicated Compressed Natural Gas (CNG) system is ordered, includes average speed, oil life, tire pressure monitoring, ice warning, engine hours, tachometer and maintenance reminders. Compass and outside temperature available if equipped.)
- Floor covering, full-length Black rubberized-vinyl (Not available with (YF2) Ambulance Package or (RFM) rear floor covering delete.)
- Headliner, cloth, over driver and passenger
- Instrumentation, analog with speedometer, odometer with trip odometer, fuel level, voltmeter, engine temperature and oil pressure
- Lighting, interior with 4 dome lights 1 overhead and 3 LED's on cross members in cargo area, includes defeat switch and door handle-activated switches (When (UF2) Express Access Enhanced Lighting Package is ordered, 2 LED lights are replaced with fluorescent lights.)
- Oil life monitor- Power outlet, 120-volt
- Power outlets, 2 auxiliary on engine console cover with covers, 12-volt
- Seating arrangement, driver and front passenger high-back buckets with head restraints and vinyl or cloth trim (Not available with (AJ3) driver-side only frontal air bag.)
- Seats, front bucket with vinyl trim and outboard head restraints, includes inboard armrests. (Requires (\*\*W) interior trim.)
- Steering wheel, steel sleeve column with theft-deterrent locking feature, Black
- Theft-deterrent system, vehicle, PASS-Key III
- Tow/haul mode selector, instrument panel-mounted
- Trim panels, hinged rear side doors and hinged rear doors
- Visors, driver and front passenger, cloth, padded
- Warning tones, headlamp on and key-in-ignition

---

## Mechanical

- Alternator, 105 amps
- Battery, 600 cold-cranking amps, maintenance-free with rundown protection and retained accessory power
- Body, standard- Brakes, 4-wheel antilock, 4-wheel disc
- Engine, Vortec 4.8L V8 SFI (285 hp [212.5 kW] @ 5400 rpm, 295 lb-ft of torque [398.3 N-m] @ 4600 rpm) (Includes external engine oil cooler. Reference the Engine/Axle page for availability.)
- Exhaust, aluminized stainless-steel muffler and tailpipe- Frame, full-length box ladder-type
- Fuel tank capacity, mid-frame and approximately 31 gallons (117.3L)
- GVWR, 8600 lbs. (3901 kg) (Standard on CG23405 or CG23705 models. Reference the Engine/Axle page for availability.)
- Rear axle, 3.42 ratio (Required with (L20) Vortec 4.8L V8 SFI engine, (L96) Vortec 6.0L V8 SFI FlexFuel or (LC8) Gaseous 6.0L V8 SFI engine. Reference the Engine/Axle page for availability.)
- Rear wheel drive- Steering, power
- Suspension, front independent with coil springs and stabilizer bar

- Suspension, rear hypoid drive axle with multi-leaf springs
- Transmission oil cooler, external (Included and only available with (L20) Vortec 4.8L V8 SFI engine or (L96) Vortec 6.0L V8 SFI FlexFuel engine.)
- Transmission, 6-speed automatic, heavy-duty, electronically controlled with overdrive tow/haul mode and internal transmission oil cooler (Reference the Engine/Axle page for availability.)

## Option Packages

### Factory Installed Packages

-  
ENGINE, VORTEC 4.8L V8 SFI  
(285 hp [212.5 kW] @ 5400 rpm,  
295 lb-ft of torque [398.3 N-m]  
@ 4600 rpm)

<span style="font-size: 14px;">MPG based on 2008 -2009 EPA mileage estimates, reflecting new EPA fuel economy methods beginning with 2008 models. Use for comparison purposes only. Do not compare to models before 2008. Your actual mileage will vary depending on how you drive and maintain your vehicle.</span>



[palaceautosales.com](http://palaceautosales.com)

(704) 921-6700

4104 N. Tryon St.

CHARLOTTE, North Carolina 28206

© 2021 AutoRevo - All rights reserved. - Powered by AutoRevo