



2015 GMC Sierra 1500 Base

Our Price \$22,811

View this vehicle on our website at parksdeals.com

Parks Chevrolet, Inc.

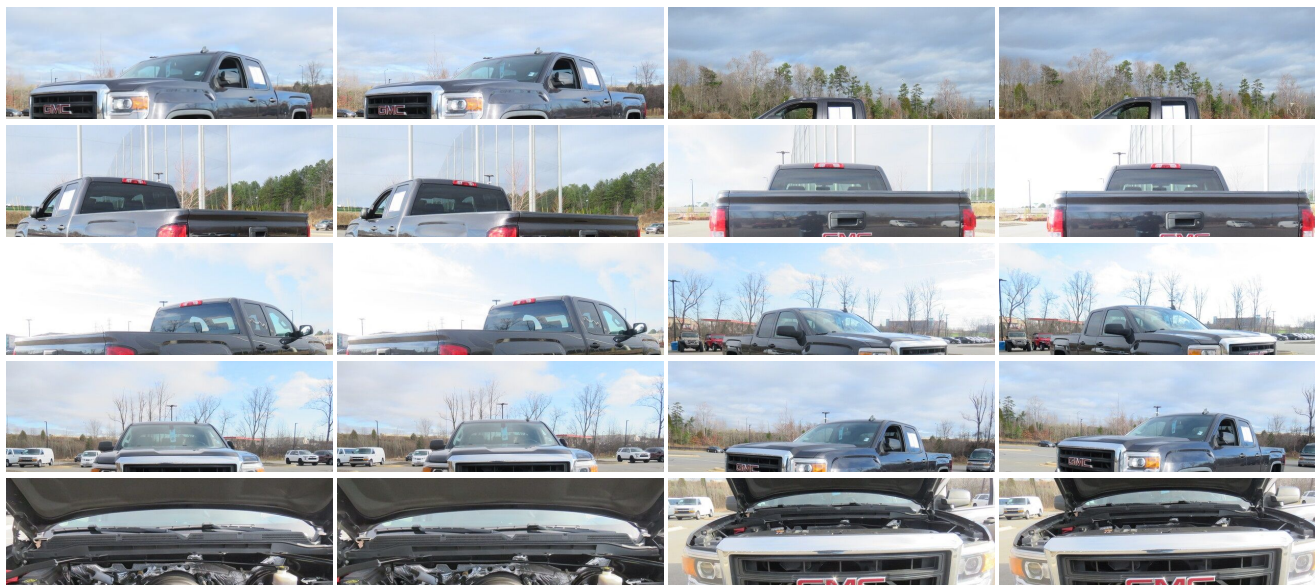
[833-825-2763](tel:833-825-2763)

615 NC-66 South, Kernersville, NC 27284

Photos

Details

Contact



Specifications:

Year:	2015
VIN:	1GTR1TEH4FZ342690
Make:	GMC
Stock:	9C3590
Model/Trim:	Sierra 1500 Base
Condition:	Pre-Owned
Body:	Pickup Truck
Exterior:	Iridium Metallic
Engine:	ENGINE, 4.3L ECOTEC3 V6 WITH ACTIVE FUEL MANAGEMENT
Interior:	Jet Black/Dark Ash Cloth
Mileage:	104,314
Drivetrain:	Rear Wheel Drive
Economy:	City 18 / Highway 24

Vehicle Description

2015 GMC Sierra 1500

6-Speed Automatic Electronic with Overdrive, Jet Black/Dark Ash Cloth, 150 Amp Alternator, 3.5" Diagonal Monochromatic Display D.I.C., Black Manual Outside Mirrors, Chrome Grille Surround, Cloth Seat Trim, Deep-Tinted Glass, Front wheel independent suspension, Fully automatic headlights, Graphite-Colored Rubberized-Vinyl Floor Covering, Heavy Duty Suspension, Heavy-Duty Rear Locking Differential, Manual Tilt Wheel Steering Column, OnStar w/4G LTE, Power Windows w/Driver Express Up & Down, Preferred Equipment Group 1SA, Rear step bumper, Sierra Appearance Package, Single-Zone Air Conditioning, Solar Absorbing Tinted Glass, Speed control, Wheels: 17" x 8" Stainless Steel Clad.

Call 704.288.0662 to check on the availability of this vehicle and schedule a private showing or shop 24 hours a day @ WWW.PARKSCHARLOTTE.COM. *All prices are plus tax, tag, title, and documentation. All vehicles are fully reconditioned by a Master ASE Factory Trained Certified Technician.

Awards:
* JD Power Automotive Performance, Execution and Layout (APEAL) Study * 2015 KBB.com Brand Image Awards

Installed Options	Option Packages
<div><p>Interior</p><ul style="list-style-type: none">- Seats, front 40/20/40 split-bench 3-passenger, driver and front passenger recline with outboard head restraints and center fold-down armrest with storage. Vinyl has fixed lumbar and cloth has manually adjustable driver lumbar.- Door locks, power- Floor covering, Graphite-colored rubberized-vinyl (Not included when (SXL) Elevation Edition is ordered.)- Steering column, manual Tilt-Wheel- Instrumentation, 6-gauge cluster featuring speedometer, fuel level, engine temperature, tachometer, voltage and oil pressure- Driver Information Center, 3.5-inch diagonal monochromatic display provides warning messages and basic vehicle information- Windows, power with driver express up and down and express down on all other windows- Cruise control, steering wheel-mounted- Air conditioning, single-zone- Assist handle, front passenger on A-pillar- OnStar Delete</div> <div><p>Exterior</p><ul style="list-style-type: none">- Wheels, 17" x 8" (43.2 cm x 20.3 cm) painted steel- Tires, P255/70R17 all-season, blackwall- Wheel, full-size spare, 17" (43.2 cm) steel- Tire, spare P255/70R17 all-season, blackwall (Included and only available with (RBZ) P255/70R17 all-season, blackwall tires.)- Tire carrier lock keyed cylinder lock that utilizes same key as ignition and door- Bumper, front chrome- Bumper, rear chrome with rear bumper corner steps- CornerStep, rear bumper- Grille surround, chrome (Not included when (SXL) Elevation Edition is ordered.)- Headlamps, halogen projector</div>	<div><p>Factory Installed Packages</p><hr/><p>ENGINE, 4.3L ECOTEC3 V6 WITH ACTIVE FUEL MANAGEMENT</p><p>Direct Injection and Variable Valve Timing, includes aluminum block construction with FlexFuel capability, capable of running on unleaded or up to 85% ethanol (285 hp [212 kW] @ 5300 rpm, 305 lb-ft of torque [413 Nm] @ 3900 rpm)</p></div>

- Lamps, cargo area, cab mounted with switch on center switch bank
- Mirrors, outside manual, Black- Glass, solar absorbing, tinted
- Tailgate and bed rail protection caps, top
- Tailgate, locking utilizes same key as ignition and door - Door handles, Black

Safety

- Seats, front 40/20/40 split-bench 3-passenger, driver and front passenger recline with outboard head restraints and center fold-down armrest with storage. Vinyl has fixed lumbar and cloth has manually adjustable driver lumbar.
- Door locks, power
- Floor covering, Graphite-colored rubberized-vinyl (Not included when (SXL) Elevation Edition is ordered.)
- Steering column, manual Tilt-Wheel
- Instrumentation, 6-gauge cluster featuring speedometer, fuel level, engine temperature, tachometer, voltage and oil pressure
- Driver Information Center, 3.5-inch diagonal monochromatic display provides warning messages and basic vehicle information
- Windows, power with driver express up and down and express down on all other windows
- Cruise control, steering wheel-mounted- Air conditioning, single-zone
- Assist handle, front passenger on A-pillar - OnStar Delete

Mechanical

- Transmission, 6-speed automatic, electronically controlled with overdrive and tow/haul mode. Includes Cruise Grade Braking and Powertrain Grade Braking
- Engine, 4.3L EcoTec3 V6 with Active Fuel Management Direct Injection and Variable Valve Timing, includes aluminum block construction with FlexFuel capability, capable of running on unleaded or up to 85% ethanol (285 hp [212 kW] @ 5300 rpm, 305 lb-ft of torque [413 Nm] @ 3900 rpm)
- Rear axle, 3.23 ratio (Standard and only available on (LV3) 4.3L EcoTec3 V6 engine with 2WD models.)
- Body, Pick Up Box
- GVWR, 6900 lbs. (3130 kg) (Requires 2WD models and (LV3) 4.3L EcoTec3 V6 engine.)
- Suspension Package, Handling/Trailer, heavy-duty includes 46 mm piston monotube shocks and 36mm front stabilizer bar
- Rear wheel drive- Cooling, external engine oil cooler- Alternator, 150 amps
- Battery, heavy-duty 730 cold-cranking amps/70 Amp-hr, maintenance-free with rundown protection and retained accessory power
- Frame, fully-boxed, hydroformed front section- Cargo tie downs (4), movable upper
- Steering, Electric Power Steering (EPS) assist, rack-and-pinion
- Brakes, 4-wheel disc with DURALIFE rotors, 4-wheel antilock
- Exhaust, aluminized stainless-steel muffler and tailpipe

Parks Chevrolet, Inc.

Parks Chevrolet, Inc.

View this car on our website at parksdeals.com/7011473

Website: parksdeals.com

Phone: [833-825-2763](tel:833-825-2763)

Map: [615 NC-66 South, Kernersville, NC 27284](#)

