



2010 Porsche 911 Carrera S w/ Sports Chrono Plus, NAV, & Manual!

Website Price \$74,995

View this vehicle on our website at autoparkdallas.com



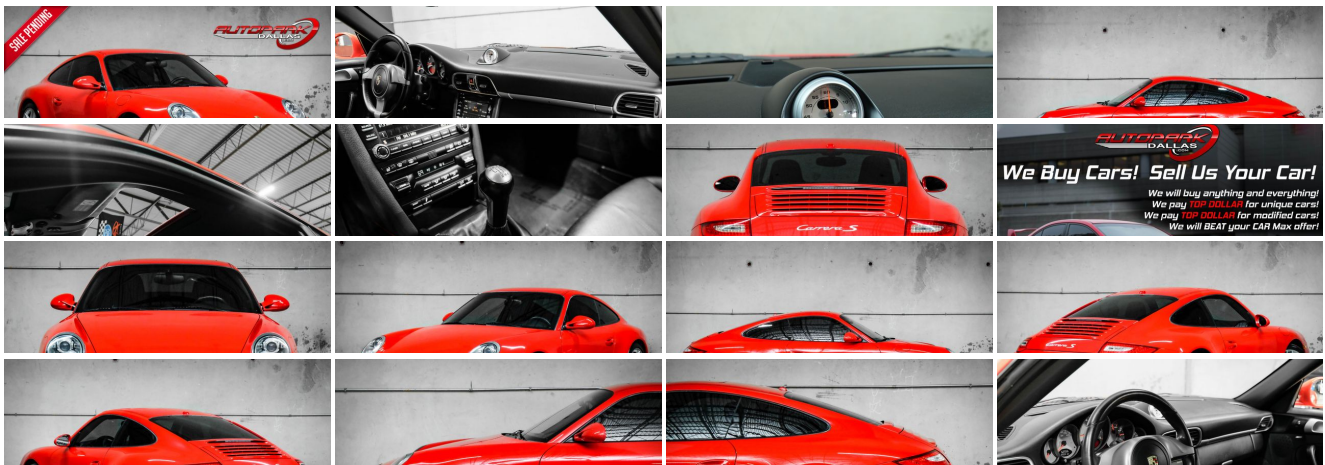
(214) 945-2601

2061 S Stemmons Fwy , Lewisville, TX 75067

Photos

Details

Contact





Specifications:

Year:	2010
VIN:	WP0AB2A90AS720539
Make:	Porsche
Model/Trim:	911 Carrera S w/ Sports Chrono Plus, NAV, & Manual!
Condition:	Pre-Owned
Body:	Coupe
Exterior:	Guards Red
Engine:	3.8L horizontally-opposed DOHC DI 24V 6-cyl engine -inc: dry sump lubrication, oil cooler
Interior:	Black Leather
Transmission:	6-SPEED MANUAL TRANSMISSION
Mileage:	62,383
Drivetrain:	Rear Wheel Drive
Economy:	City 17 / Highway 24

Vehicle Description

AutoPark Dallas is thrilled to offer you this 6-Speed 2010 Porsche 911 Carrera with Sport Chrono Plus Package for sale! Any Porsche is already on another level of vehicle luxury thanks to its entitlement, but a Carrera S can provide a pure driving experience that is fun and unmatched by any other brand! Our 911 Carrera S here at APD is jaw-dropping gorgeous with its classic Guards Red on Black Leather combo, In Amazing condition, and best of all has the Sport Chrono Plus Package that is always needed! DO! NOT! HESITATE!!! Check out this Porsche 911 Carrera S parked here in our indoor 16,000 Sq Ft Showroom located in Dallas , Tx. amongst our inventory of 100+ other unique and luxury vehicles!

2010 Porsche 911 Carrera S

* 2 Previous Owners !*

* Clean CarFax !*

* 2 Set of Keys !*

* Sport Chrono Plus Package !*

* PCM Navigation Package !*

* BOSE High End Sound Package !*

* Power Seat Package !*

Guards Red Exterior

Black Leather Interior

Navigation

* Sport Mode !*

Heated Driver & Passenger Seat

Single-Zone Climate Controls

Driver Seat Memory

Cruise Control

LED Daytime Running Lights

In-Dash 6-Disc CD Changer

Porsche Active Suspension Management System

3.8L Horizontally-Opposed DOHC 24V 6-Cyl Engine

6-Speed Manual Transmission

Rear Wheel Drive

Professionally Detailed!

Well Maintained!

* Free CarFax Report !*

AND SO MUCH MORE!!!

Financing is available!

Check out our Payment Calculator to get an estimate on your monthly payments!

OR

Get pre-approved in no time by filling out a credit application on the 'Finance' section of our website!

We also offer MANY different Extended Warranty options!

Check out our Google Reviews by *Clicking* this LINK!

Referrals and Testimonials is what our business is built on!

The team here at AutoPark Dallas, is dedicated to offering a level of customer service not usually found in the automobile industry. Thanks to years of extensive car buying / selling experience, we pursue quality used and new vehicles that are hand-picked from factory sources. Our love for automobiles and dislike of traditional dealership tactics is what motivates us to provide the service we do! The pride we take in continuing this service long after the vehicle has been delivered is what we strive for! Looking forward to making every effort to see that our customer is completely satisfied and a friend for life!

Pre-purchase inspections are always welcomed!

We also offer airport pick-up, competitive financing options, free CarFax Reports, Car Shipping nationwide, Extended Warranty plans, and so much more!

Trade-In(s) are always accepted or sell us your used car (MODIFIED OR NOT)! Please call or text for more information about Trade-Ins or selling your car to us @ (214) 945-2601!

#(214) 945-2601

Call or Text *Anytime!*

Se habla Español

WE BUY CARS!

WWW.AUTOPARKDALLAS.COM

Installed Options

Interior

- 3-spoke leather-wrapped tilt/telescopic steering wheel- Alarm system
- Aluminum painted interior trim- Anti-theft system
- Automatic climate control -inc: active carbon filter- Aux pwr outlet- Cruise control
- Door entry guards w/model logo- Dual front cup holders- Front footwell lighting
- HomeLink system- Illuminated visor vanity mirrors
- Keyless entry -inc: remote trunk release- Leather-wrapped gear lever & handbrake
- Pwr windows -inc: auto up/down, anti-jamming feature- Rear window defogger
- Split-folding rear seats
- Standard seats -inc: driver & passenger pwr backrest, manual horizontal/height adjustments
- Uniform interior lighting

Exterior

- P235/35ZR19 summer high performance front tires
- P295/30ZR19 summer high performance rear tires
- 19" x 11" rear Carrera S II aluminum wheels
- 19" x 8" front Carrera S II aluminum wheels - Aluminum trunk lid
- Automatic extending rear spoiler
- Bi-xenon headlights -inc: headlight leveling, washers, welcome home function
- Black brake calipers- Front air dam w/black intakes- Full underbody paneling
- LED lights -inc: tail lights, brake lights- Pwr heated mirrors- Pwr sunroof
- Rain-sensing front wipers -inc: heated washer nozzles & delay control

Safety

- 3-spoke leather-wrapped tilt/telescopic steering wheel- Alarm system
- Aluminum painted interior trim- Anti-theft system
- Automatic climate control -inc: active carbon filter- Aux pwr outlet- Cruise control
- Door entry guards w/model logo- Dual front cup holders- Front footwell lighting
- HomeLink system- Illuminated visor vanity mirrors
- Keyless entry -inc: remote trunk release- Leather-wrapped gear lever & handbrake
- Pwr windows -inc: auto up/down, anti-jamming feature- Rear window defogger
- Split-folding rear seats
- Standard seats -inc: driver & passenger pwr backrest, manual horizontal/height adjustments
- Uniform interior lighting

Mechanical

- 3.8L horizontally-opposed DOHC DI 24V 6-cyl engine -inc: dry sump lubrication, oil cooler
- 6-speed manual transmission- Double inertia flywheel- Front/rear stabilizer bars
- Porsche active suspension management (PASM) -inc: active management of suspension firmness, 10mm ride height reduction
- Pwr 4-wheel vented disc brakes -inc: 4-piston front/rear monobloc brake calipers
- Pwr rack & pinion steering- Rear wheel drive
- Stainless steel exhaust system w/2 brushed steel tail pipes
- Vario-Cam Plus variable valve timing system

Option Packages

Factory Installed Packages

6-SPEED MANUAL TRANSMISSION

AUTO-DIMMING MIRRORS

-inc: interior & exterior mirrors \$420

BOSE HIGH END SOUND PKG

-inc: 5.1 surround sound, (13) speakers, (7) channel amp, 385-watts, auto tone/volume compensation \$1,440

DYNAMIC CORNERING LIGHTS

\$690

EXTERIOR COLOR GEAR LEVER TRIM

\$295

FRONT & REAR INTERIOR COLOR FLOOR MATS

\$150

MULTI-STAGE HEATED FRONT SEATS

\$510

PCM NAVIGATION MODULE

-inc: 40GB HDD, dynamic route calculation, extended navigation \$2,110

PWR SEAT PKG

-inc: driver & passenger pwr comfort seats, driver seat & mirror memory, driver & passenger lumbar support adjustments \$1,550

SPORT CHRONO PKG PLUS

-inc: analog & digital chronometer, sport button in center console, ability to adjust lighting, wipers, air cond & door locking to personal preference \$1,320

UNIVERSAL AUDIO INTERFACE

-inc: connections for iPod, USB for memory stick w/MP3 files, aux input \$440

XM RADIO

-inc: 3-month subscription service \$750

BLACK, STANDARD LEATHER SEAT TRIM

Option Packages Total

\$9,675

AUTOPARK

Dallas

Auto Park Dallas

View this car on our website at autoparkdallas.com/7011218

Website: autoparkdallas.com

Phone: (214) 945-2601

Map: 2061 S Stemmons Fwy, Lewisville, TX 75067

