



## 2018 Chevrolet Camaro 1SS 1LE Wheels

Website Price \$35,995

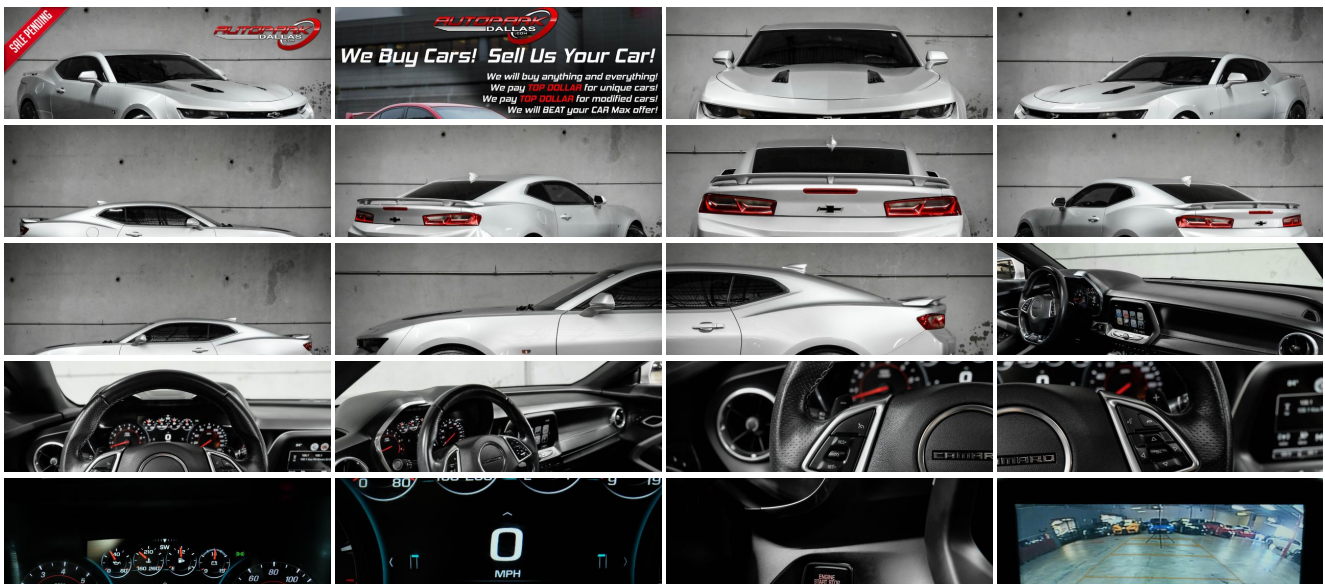
View this vehicle on our website at [autoparkdallas.com](http://autoparkdallas.com)



(214) 945-2601

2061 S Stemmons Fwy , Lewisville, TX 75067

- Photos
- Details
- Contact



## Specifications:

<b>Year:</b>	2018
<b>VIN:</b>	1G1FF1R79J0135132
<b>Make:</b>	Chevrolet
<b>Model/Trim:</b>	Camaro 1SS 1LE Wheels
<b>Condition:</b>	Pre-Owned
<b>Body:</b>	Coupe
<b>Exterior:</b>	Silver Ice Metallic
<b>Engine:</b>	ENGINE, 6.2L (376 CI) V8 DI, VVT
<b>Interior:</b>	Jet Black Cloth
<b>Transmission:</b>	TRANSMISSION, 8-SPEED AUTOMATIC
<b>Mileage:</b>	63,025
<b>Drivetrain:</b>	Rear Wheel Drive
<b>Economy:</b>	City 17 / Highway 27

## Vehicle Description

AutoPark Dallas is thrilled to offer you this Silver Ice Metallic 2018 Chevrolet Camaro 1SS with 1LE Wheels for sale! The Camaro is powered by the Chevrolet's big 6.2L V8 Engine that pumps 455 horses stock, but what really catches everybody's eyes is that new body style that provides us consumers a brand new unique look. Our Camaro here at APD doesn't just look mean with it being Silver Ice Metallic on Black, but well loaded out from the factory to make the ride comfortable and reliable! If you looking for a sports coupe or a fun daily driver then look no further than this Camaro 1SS parked here in our indoor 16,000 Sq Ft Showroom located in Dallas , Texas amongst our inventory of 100+ other Performance / Modified and Luxury cars!

---

## 2018 Chevrolet Camaro 1SS

**\* Clean CarFax !\***

Silver Ice Metallic Exterior

Jet Black Cloth Interior

**\* 1LE Gloss Black Wheels !\***

Hands Free Bluetooth

Back-Up Camera

Powered Moonroof

Push Button Start

Remote Start-Up

Comfort Access Keyless Entry

Single-Zone Air Conditioning

Driver Selective Modes

Manual Mode w/ Paddle Shifters

Cruise Control

LED Daytime Running Lights

Limited Slip Differential

Bluetooth Audio Streaming

Steering Wheel Mounted Controls

6.2L V8 DI VVT Engine

8-Speed Automatic Transmission

Rear Wheel Drive

Professionally Detailed!

Well Maintained!

\* Free CarFax Report !\*

AND SO MUCH MORE!!!

---

## Financing is available!

Check out our Payment Calculator to get an estimate on your monthly payments!

OR

Get pre-approved in no time by filling out a credit application on the 'Finance' section of our website!

We also offer MANY different Extended Warranty options!

---

Check out our Google Reviews by \*Clicking\* this LINK!

Referrals and Testimonials is what our business is built on!

---

The team here at AutoPark Dallas, is dedicated to offering a level of customer service not usually found in the automobile industry. Thanks to years of extensive car buying / selling experience, we pursue quality used and new vehicles that are hand-picked from factory sources. Our love for automobiles and dislike of traditional dealership tactics is what motivates us to provide the service we do! The pride we take in continuing this service long after the vehicle has been delivered is what we strive for! Looking forward to making every effort to see that our customer is completely satisfied and a friend for life!

Pre-purchase inspections are always welcomed!

We also offer airport pick-up, competitive financing options, free CarFax Reports, Car Shipping nationwide, Extended Warranty plans, and so much more!

Trade-In(s) are always accepted or sell us your used car (MODIFIED OR NOT)! Please call or text for more information about Trade-Ins or selling your car to us @ (214) 945-2601!

---

**#(214) 945-2601**

**Call or Text *Anytime!***

**Se habla Español**

**WE BUY CARS!**

**WWW.AUTOPARKDALLAS.COM**

## Installed Options

### Interior

- Air conditioning, single-zone automatic climate control- Compass display
- Cruise control, electronic with set and resume speed, steering wheel mounted
- Cup holders, 2 front- Dead pedal, driver- Defogger, rear-window, electric
- Door locks, power programmable with lockout protection
- Driver Information Center, enhanced, 8" diagonal multi-color re-configurable display
- Floor mats, carpeted front- Glovebox, lockable
- Keyless Open and Start includes 2 remote transmitters that enable automatic door unlock and open by touching door switch
- Lighting, front reading lamps- Mirror, inside rearview manual day/night, frameless
- Power outlet, 1 located on center console- Seat adjuster, driver, 8-way power
- Seat adjuster, front passenger, 6-way power- Seat, rear, folding
- Seats, Cloth front Sport bucket - Shift knob, leather-wrapped
- Speedometer, miles/kilometers- Steering column, manual rake and telescopic
- Steering wheel, leather-wrapped, flat-bottom
- Theft-deterrent system, electrical, unauthorized entry- Trunk release, power
- Visors, driver and front passenger vanity mirrors, covered, illuminated
- Windows, power with driver and passenger Express-Down/Up

### Exterior

- Tires, 245/40ZR20 front and 275/35ZR20 rear, blackwall, summer-only, run-flat (Do not use summer only tires in winter conditions, as it would adversely affect vehicle safety, performance and durability. Use only GM-approved tire and wheel combinations. Unapproved combinations may change the vehicle's performance characteristics. For important tire and wheel information, go to <https://my.chevrolet.com/learnAbout/chevrolettires> or see your dealer.)
- Wheels, 20" x 8.5" (50.8 cm x 21.6 cm) front and 20" x 9.5" (50.8 cm x 24.1 cm) rear bright 5-spoke Silver-painted aluminum
- Headlamps, high intensity discharge with automatic exterior lamp control
- Mirrors, outside power-adjustable, body-color- Spoiler, rear, stanchion
- Wipers, front variable-speed, intermittent with washers

### Safety

- Air conditioning, single-zone automatic climate control- Compass display
- Cruise control, electronic with set and resume speed, steering wheel mounted
- Cup holders, 2 front- Dead pedal, driver- Defogger, rear-window, electric
- Door locks, power programmable with lockout protection
- Driver Information Center, enhanced, 8" diagonal multi-color re-configurable display
- Floor mats, carpeted front- Glovebox, lockable
- Keyless Open and Start includes 2 remote transmitters that enable automatic door unlock and open by touching door switch
- Lighting, front reading lamps- Mirror, inside rearview manual day/night, frameless
- Power outlet, 1 located on center console- Seat adjuster, driver, 8-way power
- Seat adjuster, front passenger, 6-way power- Seat, rear, folding
- Seats, Cloth front Sport bucket - Shift knob, leather-wrapped
- Speedometer, miles/kilometers- Steering column, manual rake and telescopic
- Steering wheel, leather-wrapped, flat-bottom
- Theft-deterrent system, electrical, unauthorized entry- Trunk release, power
- Visors, driver and front passenger vanity mirrors, covered, illuminated
- Windows, power with driver and passenger Express-Down/Up

### Mechanical

- Transmission, 6-speed manual (Includes Active Rev Matching.)
- Battery rundown protection
- Brakes, Brembo 4-piston front and rear, performance, 4-wheel antilock, 4-wheel disc
- Cooler, engine coolant, auxiliary- Cooler, rear differential- Cooler, transmission oil
- Cooling system, extra capacity- Cooling, external engine oil cooler
- Differential, limited slip
- Driver Selector Mode up to 4 modes available for various driving conditions - Snow/Ice, Tour, Sport and Track (SS and ZL1 models only)
- Engine, 6.2L (376 ci) V8 DI, VVT (455 hp [339.3 kW] @ 6000 rpm, 455 lb-ft of torque [614.3 N-m] @ 4400 rpm)
- Exhaust, dual-outlet stainless-steel with bright tips - Fueling system, capless
- Rear axle, 3.73 ratio (Included with (MN6) 6-speed manual transmission.)
- Rear wheel drive- Steering, power, variable ratio, electric- Suspension, Performance

## Option Packages

### Factory Installed Packages

---

#### ENGINE, 6.2L (376 Ci) V8 DI, VVT

(455 hp [339.3 kW] @ 6000 rpm, 455 lb-ft of torque [614.3 N-m] @ 4400 rpm)

---

#### TRANSMISSION, 8-SPEED AUTOMATIC

includes transmission oil cooler and (BTV) remote vehicle starter system

\$1,495

---

#### PADDLE-SHIFT MANUAL CONTROLS

---

#### REMOTE VEHICLE STARTER SYSTEM

---

#### SUNROOF, POWER

\$995

---

#### REAR AXLE, 2.77 RATIO

---

#### EMISSIONS, FEDERAL REQUIREMENTS

---

#### SILVER ICE METALLIC

---

#### STANDARD PAINT

---

1SS PREFERRED EQUIPMENT GROUP,  
includes Standard Equipment

---

#### AUDIO SYSTEM, CHEVROLET MYLINK RADIO WITH 8" DIAGONAL COLOR TOUCH-SCREEN, AM/FM STEREO WITH SEEK-AND-SCAN AND DIGITAL CLOCK

includes Bluetooth streaming audio for music and select phones; voice-activated technology for radio and phone; featuring Android Auto and Apple CarPlay capability for compatible phone and Shop with the ability to browse, select and install apps to your vehicle. Apps include Pandora, iHeartRadio, The Weather Channel and more

---

#### JET BLACK, SEAT TRIM

---

#### SEATS, CLOTH FRONT SPORT BUCKET

---

#### Option Packages Total

\$2,490

# AUTOPARK

## Dallas

Auto Park Dallas

View this car on our website at [autoparkdallas.com/7010553](http://autoparkdallas.com/7010553)

Website: [autoparkdallas.com](http://autoparkdallas.com)

Phone: (214) 945-2601

Map: 2061 S Stemmons Fwy, Lewisville, TX 75067

