

## 2018 Ford F-150 LARIAT FX4

View this car on our website at [colliervilleautocenter.com/7004236/ebrochure](http://colliervilleautocenter.com/7004236/ebrochure)



Our Price **\$46,995**

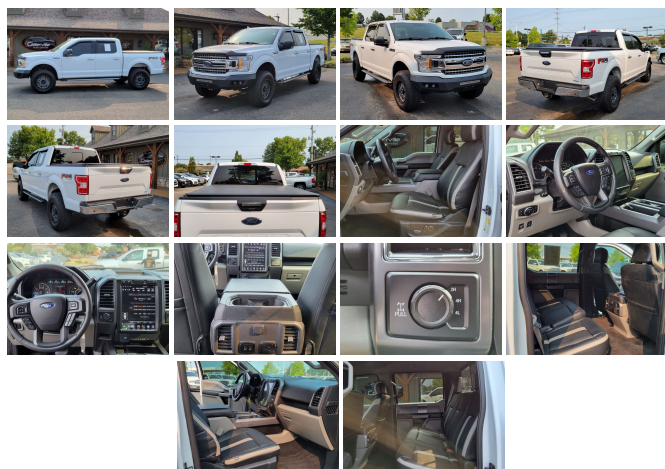
### Specifications:

<b>Year:</b>	2018
<b>VIN:</b>	1FTEW1EG7JKD41059
<b>Make:</b>	Ford
<b>Model/Trim:</b>	F-150 LARIAT FX4
<b>Condition:</b>	Pre-Owned
<b>Body:</b>	Pickup Truck
<b>Exterior:</b>	Oxford White
<b>Engine:</b>	ENGINE: 3.5L V6 ECOBOOST
<b>Interior:</b>	Medium Earth Gray Leather
<b>Mileage:</b>	81,801
<b>Drivetrain:</b>	4 Wheel Drive
<b>Economy:</b>	City 17 / Highway 23

Collierville Auto Center offers only the very best used cars, trucks and SUV's in the Collierville, TN area.

Give us a call at: 901-853-0240, email us at: [leads@colliervilleautocenter.com](mailto:leads@colliervilleautocenter.com) or stop by and visit us at: 651 W Poplar Ave, Collierville, TN 38017.

CALL TERRY FOR MORE INFORMATION 901-692-2867




## Vehicle History Report : as Of 10/25/2021


**CARFAX**


Snapshot

**2018 FORD F150 SUPERCREW**


 No accidents or damage reported to CARFAX

 CARFAX 1-Owner vehicle

 19 Service history records

 Personal vehicle

 Last owned in Tennessee

 **81,801** Last reported odometer reading



**FREE CARFAX Report**

See the full CARFAX Report for additional information

\*carfax Snapshot is a reflection of available information on the date the report was pulled. carfax is constantly being updated with new information and is subject to change at any time.

## Our Location :



2018 Ford F-150 LARIAT FX4

Collierville Auto Center - 901-853-0240 - View this car on our website at [colliervilleautocenter.com/7004236/ebrochure](http://colliervilleautocenter.com/7004236/ebrochure)

## Installed Options

### Interior

- 2 Seatback Storage Pockets- 3 12V DC Power Outlets
- 60-40 Folding Split-Bench Front Facing Fold-Up Cushion Rear Seat - Analog Appearance
- Compass- Cruise Control w/Steering Wheel Controls
- Day-Night Auto-Dimming Rearview Mirror- Delayed Accessory Power
- Door Mirrors and Pedals
- Driver And Passenger Visor Vanity Mirrors w/Driver And Passenger Illumination
- Driver Seat- FOB Controls -inc: Cargo Access- Fade-To-Off Interior Lighting
- Front And Rear Map Lights- Front Center Armrest w/Storage and Rear Center Armrest
- Front Cupholder- Full Carpet Floor Covering -inc: Carpet Front And Rear Floor Mats
- Full Cloth Headliner- Full Overhead Console w/Storage and 3 12V DC Power Outlets
- Gauges -inc: Speedometer, Odometer, Voltmeter, Oil Pressure, Engine Coolant Temp, Tachometer, Inclinometer, Transmission Fluid Temp, Trip Odometer and Trip Computer
- Glove Box- HVAC -inc: Underseat Ducts
- Instrument Panel Bin, Dashboard Storage, Driver / Passenger And Rear Door Bins, 1st Row Underseat Storage and 2nd Row Underseat Storage
- Interior Trim -inc: Simulated Wood/Metal-Look Instrument Panel Insert, Cabback Insulator, Simulated Wood/Metal-Look Door Panel Insert and Chrome Interior Accents
- Keypad

- Leather-Trimmed 40/20/40 Front Seat -inc: 4-way adjustable driver/passenger headrests, heated and ventilated 10-way power driver and passenger w/power lumbar and memory driver's seat
- Leather/Metal-Look Steering Wheel- Manual Adjustable Rear Head Restraints
- Manual Tilt/Telescoping Steering Column- Mobile Hotspot Internet Access
- Outside Temp Gauge- Passenger Seat- Perimeter Alarm- Pickup Cargo Box Lights
- Power 1st Row Windows w/Driver And Passenger 1-Touch Up/Down
- Power Adjustable Pedals- Power Door Locks w/Autolock Feature- Power Rear Windows
- Proximity Key For Doors And Push Button Start - Rear Cupholder
- Redundant Digital Speedometer
- Remote Keyless Entry w/Integrated Key Transmitter, Illuminated Entry and Panic Button
- SYNC 3 -inc: enhanced voice recognition communications and entertainment system, 8" LCD capacitive touchscreen in center stack w/swipe capability, pinch-to-zoom capability included when equipped w/available voice-activated touchscreen navigation system, AppleLink, 911 Assist, Apple CarPlay and Android Auto and 2 smart charging USB ports, Note: SYNC AppleLink lets you control some of your favorite compatible mobile apps w/your voice, It is compatible w/select smartphone platforms, Commands may vary by phone and AppleLink software
- Securilock Anti-Theft Ignition (pats) Engine Immobilizer- Systems Monitor- Trip Computer
- Urethane Gear Shifter Material
- Voice Activated Dual Zone Front Automatic Air Conditioning

---

## Exterior

- Aluminum Panels
- Auto On/Off Aero-Composite Halogen Daytime Running Lights Preference Setting Headlamps w/Delay-Off
- Black Side Windows Trim and Black Front Windshield Trim - Body-Colored Door Handles
- Body-Colored Power Heated Side Mirrors w/Driver Auto Dimming, Convex Spotter, Power Folding and Turn Signal Indicator
- Body-Colored Wheel Well Trim- Cargo Lamp w/High Mount Stop Light
- Chrome Front Bumper w/Body-Colored Rub Strip/Fascia Accent and 2 Tow Hooks
- Chrome Grille- Chrome Rear Step Bumper- Clearcoat Paint- Deep Tinted Glass
- Front Fog Lamps- Full-Size Spare Tire Stored Underbody w/Crankdown
- Perimeter/Approach Lights- Power Rear Window w/Defroster- Regular Box Style
- Steel Spare Wheel- Tailgate Rear Cargo Access
- Tailgate/Rear Door Lock Included w/Power Door Locks - Tires: P275/65R18 OWL A/S
- Variable Intermittent Wipers
- Wheels: 18" Machined-Aluminum -inc: flash gray painted pockets

---

## Safety

- 2 Seatback Storage Pockets- 3 12V DC Power Outlets
- 60-40 Folding Split-Bench Front Facing Fold-Up Cushion Rear Seat - Analog Appearance
- Compass- Cruise Control w/Steering Wheel Controls
- Day-Night Auto-Dimming Rearview Mirror- Delayed Accessory Power
- Door Mirrors and Pedals
- Driver And Passenger Visor Vanity Mirrors w/Driver And Passenger Illumination
- Driver Seat- FOB Controls -inc: Cargo Access- Fade-To-Off Interior Lighting
- Front And Rear Map Lights- Front Center Armrest w/Storage and Rear Center Armrest
- Front Cupholder- Full Carpet Floor Covering -inc: Carpet Front And Rear Floor Mats
- Full Cloth Headliner- Full Overhead Console w/Storage and 3 12V DC Power Outlets
- Gauges -inc: Speedometer, Odometer, Voltmeter, Oil Pressure, Engine Coolant Temp, Tachometer, Inclinometer, Transmission Fluid Temp, Trip Odometer and Trip Computer
- Glove Box- HVAC -inc: Underseat Ducts
- Instrument Panel Bin, Dashboard Storage, Driver / Passenger And Rear Door Bins, 1st Row Underseat Storage and 2nd Row Underseat Storage
- Interior Trim -inc: Simulated Wood/Metal-Look Instrument Panel Insert, Cabback Insulator, Simulated Wood/Metal-Look Door Panel Insert and Chrome Interior Accents
- Keypad
- Leather-Trimmed 40/20/40 Front Seat -inc: 4-way adjustable driver/passenger headrests, heated and ventilated 10-way power driver and passenger w/power lumbar and memory driver's seat
- Leather/Metal-Look Steering Wheel- Manual Adjustable Rear Head Restraints
- Manual Tilt/Telescoping Steering Column- Mobile Hotspot Internet Access
- Outside Temp Gauge- Passenger Seat- Perimeter Alarm- Pickup Cargo Box Lights
- Power 1st Row Windows w/Driver And Passenger 1-Touch Up/Down
- Power Adjustable Pedals- Power Door Locks w/Autolock Feature- Power Rear Windows
- Proximity Key For Doors And Push Button Start - Rear Cupholder
- Redundant Digital Speedometer
- Remote Keyless Entry w/Integrated Key Transmitter, Illuminated Entry and Panic Button
- SYNC 3 -inc: enhanced voice recognition communications and entertainment system, 8" LCD capacitive touchscreen in center stack w/swipe capability, pinch-to-zoom capability included when equipped w/available voice-activated touchscreen navigation system, AppleLink, 911 Assist, Apple CarPlay and Android Auto and 2 smart charging USB ports, Note: SYNC AppleLink lets you control some of your favorite compatible mobile apps w/your voice. It is compatible w/select smartphone platforms. Commands may vary by phone and

Note: It is computer-processed smartphone platform. Commands may vary by phone and AppLink software

- Securilock Anti-Theft Ignition (pats) Engine Immobilizer- Systems Monitor- Trip Computer
- Urethane Gear Shifter Material
- Voice Activated Dual Zone Front Automatic Air Conditioning

## Mechanical

- 1690# Maximum Payload- 200 Amp Alternator- 26 Gal. Fuel Tank- 3.55 Axle Ratio
- 4-Wheel Disc Brakes w/4-Wheel ABS, Front And Rear Vented Discs, Brake Assist, Hill Hold Control and Electric Parking Brake
- 70-Amp/Hr 610CCA Maintenance-Free Battery w/Run Down Protection
- Auto Locking Hubs- Automatic Full-Time Four-Wheel Drive
- Class IV Trailer Hitch Receiver -inc: towing capability up to 5,000 lbs, on 3.3L V6 PFDI engine (99B) and 2.7L EcoBoost engine (99P) or up to 7,000 lbs, on 3.5L EcoBoost engine (99G) and 5.0L V8 engine (995), smart trailer tow connector and 4-pin/7-pin wiring harness  
Ordering the Trailer Tow Package does not include Integrated Brake Controller (67T). Integrated Brake Controller (67T) is a standalone option and must be ordered separately.
- Double Wishbone Front Suspension w/Coil Springs
- Electric Power-Assist Speed-Sensing Steering- Electronic Transfer Case
- Engine: 2.7L V6 EcoBoost -inc: auto start-stop technology - Front Anti-Roll Bar
- GVWR: 6,600 lbs Payload Package- Gas-Pressurized Shock Absorbers
- Leaf Rear Suspension w/Leaf Springs- Single Stainless Steel Exhaust
- Towing Equipment -inc: Trailer Sway Control
- Transmission w/SelectShift Sequential Shift Control
- Transmission: Electronic 10-Speed Automatic -inc: selectable drive modes: normal/tow-haul/snow-wet/EcoSelect/sport

## Option Packages

### Factory Installed Packages

-	
ENGINE: 3.5L V6 ECOBOOST -inc: auto start-stop technology, 3.31 Axle Ratio, GVWR: 6,750 lbs Payload Package	\$1,600
-	
Option Packages Total	\$1,600

\*PRICE LISTED INCLUDES A \$599 PROCESSING FEE AND DOES NOT INCLUDE TAXES, TAGS, TITLE, LICENSE, REGISTRATION OR OTHER DELIVERY CHARGES.

Collierville Auto Center  
[colliervilleautocenter.com](http://colliervilleautocenter.com)  
901-853-0240  
651 W Poplar  
Collierville, TN 38107

© 2021 AutoRevo - All rights reserved. - Powered by AutoRevo