

2002 FORD F350 SRW LARIAT 7.3L DIESEL 4X4 ONLY 2K MILE TIME CAPSULE 1-OWNER WOW

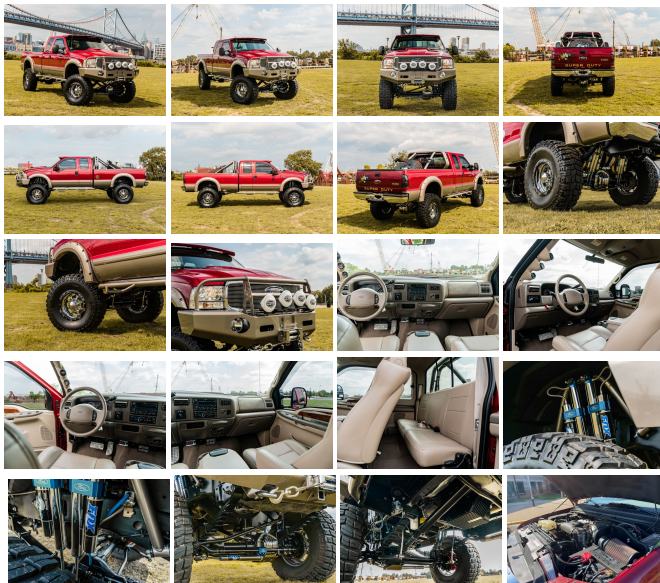
View this car on our website at njtruckking.com/7003375/ebrochure



Our Price **\$59,900**

Specifications:

Year:	2002
VIN:	1FTSX31F72EA63255
Make:	FORD F350 SRW LARIAT
Model/Trim:	7.3L DIESEL 4X4 ONLY 2K MILE TIME CAPSULE 1-OWNER WOW
Condition:	Pre-Owned
Body:	Pickup Truck
Exterior:	Red
Engine:	7.3L (444) DI V8 TURBO-DIESEL "POWER STROKE" ENGINE
Interior:	Tan
Transmission:	HD 4-SPEED AUTOMATIC TRANSMISSION W/OD
Mileage:	2,197
Drivetrain:	4 Wheel Drive



TRUE TIME CAPSULE!
2K ORIGINAL MILE 7.3L POWERSTROKE WOW!!!
2002 FORD F-350 SRW
4X4
~LARIAT~
(ONLY 2,197 ORIGINAL MILES!)
YES !! ONLY 2K ORIGINAL MILES!
~TIME CAPSULE~
1-OWNER
CLEAN CARFAX
GARAGED SINCE NEW
NEVER SEEN WEATHER
LOADED ALL OPTIONS
7.3L POWERSTROKE TURBO DIESEL
AUTOMATIC TRANSMISSION
LIFTED
18" WELD WHEELS
40" TIRES
FOX RESERVOIR SHOCKS
STEERING STABILIZER
CUSTOM BACK RACK W/ SPARE TIRE MOUNT
CUSTOM BUMPERS
WINCH
CUSTOM LIGHTING
RUNNING BOARDS
CUSTOM EXHAUST
TRAIN HORN

TRAIN HORNS
DIFF COVERS
TOO MUCH TO LIST
PHOTOS SPEAK FOR THEMSELVES
KILLER LOOK TO IT
BEAUTIFUL TRUCK
ONE OF A KIND
RARE RARE RARE
2K MILE 7.3L ! WOW
TRUCK IS IN NEW CONDITION !
RUNS AND DRIVES LIKE NEW!
SMELLS NEW!
IT IS A TRUE HEAD TURNER !
DONT MISS IT!

BUY IT NOW
\$59,900
CALL / TEXT ZACH 609-504-8808 WITH ANY QUESTIONS

2002 FORD F350 SRW LARIAT 7.3L DIESEL 4X4 ONLY 2K MILE TIME CAPSULE 1-OWNER WOW
King of Cars and Trucks - 856-693-3181 - View this car on our website at njtruckking.com/7003375/ebrochure

Our Location :



2002 FORD F350 SRW LARIAT 7.3L DIESEL 4X4 ONLY 2K MILE TIME CAPSULE 1-OWNER WOW
King of Cars and Trucks - 856-693-3181 - View this car on our website at njtruckking.com/7003375/ebrochure

Installed Options

Interior

- Electronic AM/FM stereo radio-inc: digital clock, (2) speakers
- HD vinyl front bench seat w/outboard headrests
- Vinyl fold-up rear bench seat-inc: underseat storage net
- (4) air registers w/positive shut-off- 11.5" day/night mirror- Auxiliary pwr point
- Belt Minder seatbelt-not-buckled chime & flashing warning light
- Black vinyl full-floor covering- Black vinyl steering wheel
- Color-keyed instrument panel w/dual cupholders/glove box/ashtray/cigar lighter
- Color-keyed molded cloth headliner
- Color-keyed molded door trim panel-inc: hard armrest, grab handle, reflector
- Color-keyed scuff plates
- Dual color-keyed cloth sunvisors-inc: driver-side map strap, passenger-side mirror insert
- Dual color-keyed coat hooks- Front door operated dome lamp w/time delay off
- Front passenger grab handle- Front passenger-side roof ride handle
- Grey fabric back panel cover- Inside hood release
- Instrumentation-inc: tachometer, trip odometer, voltmeter, oil pressure/ coolant temp/fuel gauges, indicator lights
- Rear door map pockets w/integrated "closed containers only" cupholders

Exterior

- Argent box-rail/tailgate moldings- Argent grille- Argent painted front/rear step bumper
- Black door handles- Black fold-away manual mirrors- Dual rear access doors
- Flip-out rear quarter windows- Front/rear license plate bracket- Interval wipers
- Pickup box/cargo light- Removable tailgate w/black handle
- Sealed beam halogen headlamps- Solar tinted glass- Valance air dam

Safety

- Electronic AM/FM stereo radio-inc: digital clock, (2) speakers
- HD vinyl front bench seat w/outboard headrests
- Vinyl fold-up rear bench seat-inc: underseat storage net
- (4) air registers w/positive shut-off- 11.5" day/night mirror- Auxiliary pwr point
- Belt Minder seatbelt-not-buckled chime & flashing warning light
- Black vinyl full-floor covering- Black vinyl steering wheel
- Color-keyed instrument panel w/dual cupholders/glove box/ashtray/cigar lighter
- Color-keyed molded cloth headliner
- Color-keyed molded door trim panel-inc: hard armrest, grab handle, reflector
- Color-keyed scuff plates
- Dual color-keyed cloth sunvisors-inc: driver-side map strap, passenger-side mirror insert
- Dual color-keyed coat hooks- Front door operated dome lamp w/time delay off
- Front passenger grab handle- Front passenger-side roof ride handle
- Grey fabric back panel cover- Inside hood release
- Instrumentation-inc: tachometer, trip odometer, voltmeter, oil pressure/ coolant temp/fuel gauges, indicator lights
- Rear door map pockets w/integrated "closed containers only" cupholders

Mechanical

- (5) LT265/75R16E all-season SBR BSW tires- 5.4L (330) SOHC SEFI V8 engine
- 6-speed manual transmission w/OD
- Full-size spare tire w/steel wheel, lock, underframe crank carrier
- Pwr 4-wheel disc brakes w/4-wheel anti-lock system- (2) front tow hooks
- 130 amp alternator- 142" WB
- 16" x 7.0" 8-hole styled steel wheels w/black center ornaments - 2-speed transfer case
- 29 gallon fuel tank- 3.73 axle ratio
- 6-3/4' pickup box w/tie-down hooks & partitionable/stackable storage
- 78 amp/hr (750 CCA) maintenance-free battery
- 9,900# GVWR (4700 front/6830 rear), springs (4700 front/6830 rear), axles (5200 front/6830 rear)
- Auxiliary rear springs "Activated when carrying heavy loads" - Four wheel drive
- Front stabilizer bar- HD gas shock absorbers- Manual locking front hubs
- Mono-beam front axle- Pwr steering
- Trailer tow pkg-inc: 7-wire harness, trailer brake wiring kit, trailer tow guide

Option Packages

Factory Installed Packages

7.3L (444) DI V8 TURBO-DIESEL "POWER STROKE" ENGINE	
-inc: 115 amp alt, dual 78 amp/hr batteries, engine block heater, exhaust back pressure valve, air filter minder	\$4,840

HD 4-SPEED AUTOMATIC TRANSMISSION W/OD	
-inc: trans temp gauge	\$1,095

Option Packages Total	
	\$5,935

King of Cars and Trucks

njtrucking.com

856-693-3181

1229 Broadway

Westville, New Jersey 08093

© 2024 AutoRevo - All rights reserved. - Powered by AutoRevo