



## 2021 Tesla Model S Plaid

**Our Price \$159,900**

View this vehicle on our website at [njtrucking.com](https://www.njtrucking.com)

King of Cars and Trucks

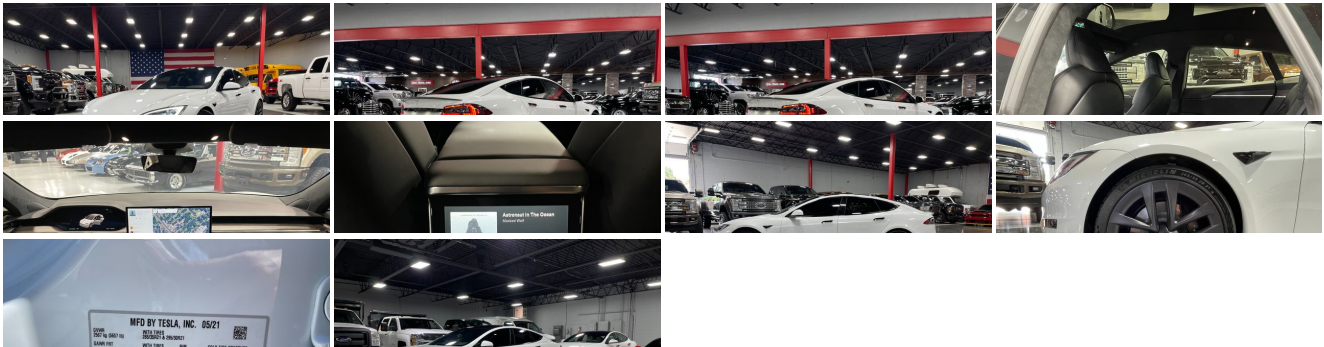
[856-693-3181](tel:856-693-3181)

1229 Broadway , Westville, New Jersey 08093

[Photos](#)

[Details](#)

[Contact](#)



### Specifications:

Year:	2021
VIN:	5YJSA1E64MF430873
Make:	Tesla

Model/Trim:	Model S Plaid
Condition:	Pre-Owned
Body:	Sedan
Exterior:	White
Interior:	Black
Mileage:	2,100
Drivetrain:	All Wheel Drive

Vehicle Description

LIKE NEW 2021 tesla plaid in the best color ! ONLY 2K MILES WOW ! FULL SELF DRIVING OPTION. LOADED! RARE TEXT/CALL ZACH 609-504-8808

Installed Options		Option Packages	
<div>Interior</div> <div><ul style="list-style-type: none"><li>- 12-Way Power Driver Seat -inc: Power Recline, Height Adjustment, Fore/Aft Movement, Cushion Tilt and Power 4-Way Lumbar Support</li><li>- 12-Way Power Passenger Seat -inc: Power Recline, Height Adjustment, Fore/Aft Movement, Cushion Tilt and Power 4-Way Lumbar Support</li><li>- Distance Pacing w/Traffic Stop-Go</li><li>- Dual Zone Front Automatic Air Conditioning w/Steering Wheel Controls</li><li>- FOB Controls -inc: Cargo Access and Windows</li><li>- Front Seats w/Leatherette Back Material and Power 4-Way Driver Lumbar</li><li>- Gauges -inc: Speedometer, Odometer, Traction Battery Level, Power/Regen, Trip Odometer and Trip Computer</li><li>- Interior Trim -inc: Deluxe Sound Insulation, Genuine Wood/Metal-Look Instrument Panel Insert, Genuine Wood/Metal-Look Door Panel Insert, Genuine Wood/Metal-Look Console Insert and Metal-Look Interior Accents</li><li>- Memory Settings -inc: Door Mirrors and Steering Wheel</li><li>- Power 1st Row Windows w/Front And Rear 1-Touch Up/Down</li><li>- Power Door Locks w/Autolock Feature- Power Rear Windows- Premium Seat Trim</li><li>- Proximity Key For Doors And Power On - Rear HVAC w/Separate Controls</li><li>- Remote Keyless Entry w/Integrated Key Transmitter, 4 Door Curb/Courtesy and Illuminated Entry</li><li>- Remote Releases -Inc: Power Cargo Access and Power Charge Port Door</li><li>- Trip Computer- Ventilated Front Bucket Seats -inc: custom driver profile</li><li>- Ventilated Front Seats- 1 12V DC Power Outlet</li><li>- 60-40 Folding Bench Front Facing Heated Fold Forward Seatback Leatherette Rear Seat</li><li>- Air Filtration- Cargo Area Concealed Storage- Cargo Net</li><li>- Carpet Floor Trim, Carpet Trunk Lid/Rear Cargo Door Trim and Carpet Mat</li><li>- Cloth Door Trim Insert- Compass- Cruise Control w/Steering Wheel Controls</li><li>- Day-Night Auto-Dimming Rearview Mirror- Delayed Accessory Power</li><li>- Driver And Passenger Visor Vanity Mirrors w/Driver And Passenger Illumination</li><li>- Driver Foot Rest- Engine Immobilizer- Fade-To-Off Interior Lighting</li><li>- Fixed Front Head Restraints and Fixed Rear Head Restraints</li><li>- Front And Rear Map Lights- Front Center Armrest and Rear Center Armrest w/Storage</li><li>- Front Cupholder- Full Carpet Floor Covering -inc: Carpet Front Floor Mats</li><li>- Full Cloth Headliner- Full Floor Console w/Covered Storage and 1 12V DC Power Outlet</li><li>- HVAC -inc: Console Ducts- Heated Leather Steering Wheel w/Auto Tilt-Away</li><li>- Homelink Garage Door Transmitter- Illuminated Locking Glove Box</li><li>- Instrument Panel Covered Bin, Driver / Passenger And Rear Door Bins</li><li>- Mobile Hotspot Internet Access- Outside Temp Gauge</li><li>- Power Tilt/Telescoping Steering Column- Rear Cupholder- Smart Device Integration</li><li>- Systems Monitor- Tracker System- Trunk/Hatch Auto-Latch- Valet Function</li></ul></div>		<div>Factory Installed Packages</div> <div><div>FULL SELF-DRIVING CAPABILITY</div><div><div>-inc: navigate on Autopilot, auto lane change, Autopark, summon, full self-driving computer and Autosteer on city streets, The currently enabled features require active driver supervision and do not make the vehicle autonomous, The activation and use of these features are dependent on achieving reliability far in excess of human drivers as demonstrated by billions of miles of experience, as well as regulatory approval, which may take longer in some jurisdictions, As these self-driving features evolve, your car will be continuously upgraded through over-the-air software updates</div><div>\$10,000</div></div></div> <div><div>WALNUT DECOR</div><div></div></div> <div><div>WHEELS: 21" ARACHNID</div><div><div>-inc: Tires: P245/35R21 Front &amp; P265/35R21 Rear</div><div>\$4,500</div></div></div> <div><div>PEARL WHITE MULTI-COAT</div><div></div></div> <div><div>Option Packages Total</div><div>\$14,500</div></div>	
<div>Exterior</div> <div><ul style="list-style-type: none"><li>- Power Liftgate Rear Cargo Access</li><li>- Tailgate/Rear Door Lock Included w/Power Door Locks- Tires: P245/45R19</li><li>- Wheels: 19" Tempest- Aluminum Panels</li><li>- Auto On/Off Projector Beam Led Low/High Beam Auto-Leveling Directionally Adaptive Auto High-Beam Daytime Running Lights Preference Setting Headlamps w/Delay-Off</li><li>- Black Door Handles- Black Grille- Black Side Windows Trim</li><li>- Body-Colored Front Bumper w/Black Rub Strip/Fascia Accent</li><li>- Body-Colored Power w/Tilt Down Heated Auto Dimming Side Mirrors w/Power Folding</li><li>- Body-Colored Rear Bumper w/Black Rub Strip/Fascia Accent- Clearcoat Paint</li></ul></div>			

- Fixed Glass 1st And 2nd Row Sunroof - Fixed Rear Window w/Defroster
- Front Fog Lamps- Headlights-Automatic Highbeams- LED Brakelights
- Laminated Glass- Light Tinted Glass- Lip Spoiler- Perimeter/Approach Lights
- Speed Sensitive Rain Detecting Variable Intermittent Wipers w/Heated Jets And Wiper Park

## Safety

- 12-Way Power Driver Seat -inc: Power Recline, Height Adjustment, Fore/Aft Movement, Cushion Tilt and Power 4-Way Lumbar Support
- 12-Way Power Passenger Seat -inc: Power Recline, Height Adjustment, Fore/Aft Movement, Cushion Tilt and Power 4-Way Lumbar Support
- Distance Pacing w/Traffic Stop-Go
- Dual Zone Front Automatic Air Conditioning w/Steering Wheel Controls
- FOB Controls -inc: Cargo Access and Windows
- Front Seats w/Leatherette Back Material and Power 4-Way Driver Lumbar
- Gauges -inc: Speedometer, Odometer, Traction Battery Level, Power/Regen, Trip Odometer and Trip Computer
- Interior Trim -inc: Deluxe Sound Insulation, Genuine Wood/Metal-Look Instrument Panel Insert, Genuine Wood/Metal-Look Door Panel Insert, Genuine Wood/Metal-Look Console Insert and Metal-Look Interior Accents
- Memory Settings -inc: Door Mirrors and Steering Wheel
- Power 1st Row Windows w/Front And Rear 1-Touch Up/Down
- Power Door Locks w/Autolock Feature- Power Rear Windows- Premium Seat Trim
- Proximity Key For Doors And Power On - Rear HVAC w/Separate Controls
- Remote Keyless Entry w/Integrated Key Transmitter, 4 Door Curb/Courtesy and Illuminated Entry
- Remote Releases -Inc: Power Cargo Access and Power Charge Port Door
- Trip Computer- Ventilated Front Bucket Seats -inc: custom driver profile
- Ventilated Front Seats- 1 12V DC Power Outlet
- 60-40 Folding Bench Front Facing Heated Fold Forward Seatback Leatherette Rear Seat
- Air Filtration- Cargo Area Concealed Storage- Cargo Net
- Carpet Floor Trim, Carpet Trunk Lid/Rear Cargo Door Trim and Carpet Mat
- Cloth Door Trim Insert- Compass- Cruise Control w/Steering Wheel Controls
- Day-Night Auto-Dimming Rearview Mirror- Delayed Accessory Power
- Driver And Passenger Visor Vanity Mirrors w/Driver And Passenger Illumination
- Driver Foot Rest- Engine Immobilizer- Fade-To-Off Interior Lighting
- Fixed Front Head Restraints and Fixed Rear Head Restraints
- Front And Rear Map Lights- Front Center Armrest and Rear Center Armrest w/Storage
- Front Cupholder- Full Carpet Floor Covering -inc: Carpet Front Floor Mats
- Full Cloth Headliner- Full Floor Console w/Covered Storage and 1 12V DC Power Outlet
- HVAC -inc: Console Ducts- Heated Leather Steering Wheel w/Auto Tilt-Away
- Homelink Garage Door Transmitter- Illuminated Locking Glove Box
- Instrument Panel Covered Bin, Driver / Passenger And Rear Door Bins
- Mobile Hotspot Internet Access- Outside Temp Gauge
- Power Tilt/Telescoping Steering Column- Rear Cupholder- Smart Device Integration
- Systems Monitor- Tracker System- Trunk/Hatch Auto-Latch- Valet Function

## Mechanical

- Double Wishbone Front Suspension w/Air Springs- Gas-Pressurized Shock Absorbers
- Multi-Link Rear Suspension w/Air Springs- 3 Skid Plates
- 4-Corner Auto-Leveling Suspension- Automatic Full-Time All-Wheel
- Automatic w/Driver Control Height Adjustable Automatic w/Driver Control Ride Control Adaptive Suspension
- Electric Power-Assist Speed-Sensing Steering- Front And Rear Anti-Roll Bars
- Lithium Ion Traction Battery
- Motors: Front Permanent Magnet -inc: Three high performance motors and carbon-sleeve rotors w/OPTWL2-inc: 2 rear permanent magnet
- Regenerative 4-Wheel Disc Brakes w/4-Wheel ABS, Front And Rear Vented Discs, Brake Assist, Hill Hold Control and Electric Parking Brake
- Transmission: 1-Speed Automatic

King of Cars and Trucks

King of Cars and Trucks

View this car on our website at [njtruckking.com/7002403](http://njtruckking.com/7002403)

Website: [njtruckking.com](http://njtruckking.com)

Phone: 856-693-3181

Map: [1229 Broadway, Westville, New Jersey 08093](#)

