



2014 Ram 1500 Big Horn Lifted w/ FUEL Wheels!

Website Price \$32,995

View this vehicle on our website at autoparkdallas.com



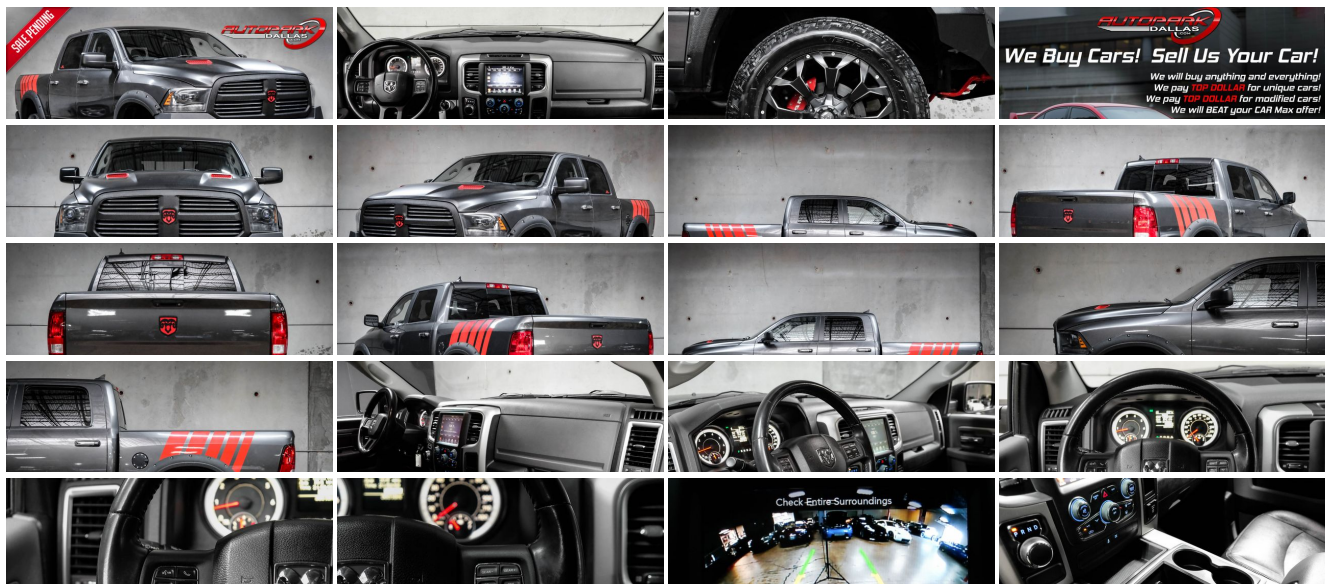
(214) 945-2601

2061 S Stemmons Fwy , Lewisville, TX 75067

Photos

Details

Contact



Specifications:

Year:	2014
VIN:	1C6RR6LGXES457376
Make:	Ram
Model/Trim:	1500 Big Horn Lifted w/ FUEL Wheels!
Condition:	Pre-Owned
Body:	Pickup Truck
Exterior:	Granite Crystal Metallic Clearcoat
Engine:	ENGINE: 3.6L V6 24V VVT
Interior:	Diesel Gray/Black Leather
Transmission:	TRANSMISSION: 8-SPEED AUTOMATIC (845RE)
Mileage:	39,573
Drivetrain:	Rear Wheel Drive
Economy:	City 17 / Highway 25

Vehicle Description

AutoPark Dallas is thrilled to offer you this Lifted 2014 Ram 1500 Big Horn with Upgrades for sale! A truck amongst trucks that boast the simplicity that defines what it means to haul the family and camper through the mountains or the next major renovations. Our 1500 here at APD though has had some major visual overhauls with a lift kit, aftermarket metal bumpers, custom decals, FUEL wheels, and so much more that it just gives off the feeling of one sick looking truck! If you are looking for a truck or just an awesome looking daily driver then look more further than this Ram 1500 parked in our indoor 16,000 Sq Ft Showroom located in Dallas , Texas amongst our inventory of 100+ other Performance / Modified and Luxury cars!

2014 Ram 1500 Big Horn

* 1 OWNER !*

* 2 Set of Keys !*

MODIFICATIONS!

20" FUEL (Style: D576 ASSAULT) Wheels

Aftermarket Suspension Lift Kit

Body Armor ECO-Series Front Bumper

TrailFX Black Powder Coat Rear HD Bumper

Aftermarket Rhino-Lined Fender Flares

Rhino-Lined RAM 1500 Side-Steps

Rhino-Lined RAM 1500 Grille w/ Diablo Emblem

RAM Gloss Red Caliper Covers

Spec-D Projector Headlights

Custom Gloss Red Hood Vents

Custom Gloss Red Control Arms

Custom Gloss Red Front Tow Hooks

Windows Tinted

STOCK!

Granite Crystal Metallic Exterior

Diesel Gray / Black Leather Interior

Bluetooth

Single-Zone Air Conditioning

Back-Up Camera

Cruise Control

Remote Keyless Entry

Bluetooth Audio Streaming

3.6L V6 24V VVT Engine

8-Speed Automatic Transmission

Rear Wheel Drive

Professionally Detailed!

Well Maintained!

* Free CarFax Report !*

AND SO MUCH MORE!!!

Financing is available!

Check out our Payment Calculator to get an estimate on your monthly payments!

OR

Get pre-approved in no time by filling out a credit application on the 'Finance' section of our website!

Check out our Google Reviews by *Clicking* this [LINK!](#)

Referrals and Testimonials is what our business is built on!

The team here at AutoPark Dallas, is dedicated to offering a level of customer service not usually found in the automobile industry. Thanks to years of extensive car buying / selling experience, we pursue quality used and new vehicles that are hand-picked from factory sources. Our love for automobiles and dislike of traditional dealership tactics is what motivates us to provide the service we do! The pride we take in continuing this service long after the vehicle has been delivered is what we strive for! Looking forward to making every effort to see that our customer is completely satisfied and a friend for life!

Pre-purchase inspections are always welcomed!

We also offer airport pick-up, competitive financing options, free CarFax Reports, Car Shipping nationwide, Extended Warranty plans, and so much more!

Trade-In(s) are always accepted or sell us your used car (MODIFIED OR NOT)! Please call or text for more information about Trade-Ins or selling your car to us @ (214) 945-2601!

#(214) 945-2601

Call or Text **Anytime!**

Se habla Español

WE BUY CARS!

WWW.AUTOPARKDALLAS.COM

Installed Options

Interior

- 4-Way Driver Seat -inc: Manual Recline and Fore/Aft Movement
- 4-Way Passenger Seat -inc: Manual Recline and Fore/Aft Movement
- 40/20/40 Split Bench Seat- 5.0" Touchscreen Display- Analog Display
- Armrests w/Storage and Rear Center Armrest- Cargo Area Concealed Storage
- Compass- Cruise Control w/Steering Wheel Controls- Delayed Accessory Power
- FOB Controls -inc: Cargo Access- Fade-To-Off Interior Lighting
- Front Armrest w/3 Cupholders- Front Map Lights
- Full Carpet Floor Covering -inc: Carpet Front And Rear Floor Mats - Full Cloth Headliner
- Full Folding Bench Front Facing Fold-Up Cushion Rear Seat
- Gauges -inc: Speedometer, Odometer, Voltmeter, Oil Pressure, Engine Coolant Temp, Tachometer, Oil Temperature, Transmission Fluid Temp, Engine Hour Meter, Trip Odometer and Trip Computer
- Glove Box- HVAC -inc: Underseat Ducts and Console Ducts
- Instrument Panel Bin, Dashboard Storage, Driver / Passenger And Rear Door Bins and 2nd Row Underseat Storage
- Interior Trim -inc: Deluxe Sound Insulation, Metal-Look Instrument Panel Insert, Metal-Look Door Panel Insert and Chrome/Metal-Look Interior Accents
- Manual Adjustable Front Head Restraints and Manual Adjustable Rear Head Restraints
- Manual Air Conditioning- Manual Tilt Steering Column- Mini Overhead Console
- Outside Temp Gauge- Passenger Visor Vanity Mirror- Pickup Cargo Box Lights
- Power 1st Row Windows w/Driver And Passenger 1-Touch Up/Down
- Power Door Locks w/Autolock Feature- Power Rear Windows- Rear Cupholder
- Rear View Mirror w/Microphone- Redundant Digital Speedometer
- Remote Keyless Entry w/Integrated Key Transmitter, Illuminated Entry and Panic Button
- Sentry Key Engine Immobilizer- Storage Tray- Systems Monitor- Trip Computer
- Urethane Gear Shifter Material- Valet Function- Vinyl Door Trim Insert

Exterior

- Tires: P275/60R20 BSW AS- Wheels: 20" x 8" Aluminum Chrome Clad
- Black Exterior Mirrors- Black Side Windows Trim and Black Front Windshield Trim
- Cargo Lamp w/High Mount Stop Light- Center Hub- Chrome Door Handles
- Chrome Front Bumper w/Body-Colored Rub Strip/Fascia Accent
- Chrome Rear Step Bumper- Clearcoat Paint- Deep Tinted Glass
- Exterior Mirrors w/Heating Element- Front License Plate Bracket
- Fully Automatic Aero-Composite Halogen Headlamps w/Delay-Off
- Galvanized Steel/Aluminum Panels- Goodyear Brand Tires- Power Rear Window
- Regular Box Style- Spare Tire Stored Underbody w/Crankdown- Steel Spare Wheel
- Tailgate Rear Cargo Access- Tailgate/Rear Door Lock Included w/Power Door Locks
- Variable Intermittent Wipers

Safety

- 4-Way Driver Seat -inc: Manual Recline and Fore/Aft Movement
- 4-Way Passenger Seat -inc: Manual Recline and Fore/Aft Movement
- 40/20/40 Split Bench Seat- 5.0" Touchscreen Display- Analog Display
- Armrests w/Storage and Rear Center Armrest- Cargo Area Concealed Storage
- Compass- Cruise Control w/Steering Wheel Controls- Delayed Accessory Power
- FOB Controls -inc: Cargo Access- Fade-To-Off Interior Lighting
- Front Armrest w/3 Cupholders- Front Map Lights
- Full Carpet Floor Covering -inc: Carpet Front And Rear Floor Mats - Full Cloth Headliner
- Full Folding Bench Front Facing Fold-Up Cushion Rear Seat
- Gauges -inc: Speedometer, Odometer, Voltmeter, Oil Pressure, Engine Coolant Temp, Tachometer, Oil Temperature, Transmission Fluid Temp, Engine Hour Meter, Trip Odometer and Trip Computer
- Glove Box- HVAC -inc: Underseat Ducts and Console Ducts
- Instrument Panel Bin, Dashboard Storage, Driver / Passenger And Rear Door Bins and 2nd Row Underseat Storage
- Interior Trim -inc: Deluxe Sound Insulation, Metal-Look Instrument Panel Insert, Metal-

Option Packages

Factory Installed Packages

ENGINE: 3.6L V6 24V VVT

TRANSMISSION: 8-SPEED AUTOMATIC (845RE)

50-STATE EMISSIONS SYSTEM

3.55 REAR AXLE RATIO \$50

QUICK ORDER PACKAGE 22Z BIG HORN \$805
-inc: Engine: 3.6L V6 24V VVT, Transmission: 8-Speed Automatic (845RE), Full Size Temporary Use Spare Tire, Leather Wrapped Steering Wheel, Fog Lamps, Steering Wheel Mounted Audio Controls, Bright/Bright Billets Grille, Locking Lug Nuts, Bighorn Badge, Class IV Receiver Hitch, Power Black Trailer Tow Mirrors, Exterior Mirrors w/Supplemental Signals, Exterior Mirrors Courtesy Lamps

GVWR: 6,800 LBS

STANDARD PAINT

GRANITE CRYSTAL METALLIC CLEARCOAT

DIESEL GRAY/BLACK, PREMIUM CLOTH BUCKET SEATS \$250

Option Packages Total \$1,105

Look Door Panel Insert and Chrome/Metal-Look Interior Accents

- Manual Adjustable Front Head Restraints and Manual Adjustable Rear Head Restraints
- Manual Air Conditioning- Manual Tilt Steering Column- Mini Overhead Console
- Outside Temp Gauge- Passenger Visor Vanity Mirror- Pickup Cargo Box Lights
- Power 1st Row Windows w/Driver And Passenger 1-Touch Up/Down
- Power Door Locks w/Autolock Feature- Power Rear Windows- Rear Cupholder
- Rear View Mirror w/Microphone- Redundant Digital Speedometer
- Remote Keyless Entry w/Integrated Key Transmitter, Illuminated Entry and Panic Button
- Sentry Key Engine Immobilizer- Storage Tray- Systems Monitor- Trip Computer
- Urethane Gear Shifter Material- Valet Function- Vinyl Door Trim Insert

Mechanical

- 180 Amp Alternator- 1830# Maximum Payload- 26 Gal. Fuel Tank
- 3.55 Rear Axle Ratio
- 4-Wheel Disc Brakes w/4-Wheel ABS, Front Vented Discs, Brake Assist and Hill Hold Control
- 730CCA Maintenance-Free Battery- Electric Power-Assist Steering- Engine Oil Cooler
- Engine: 3.6L V6 24V VVT- Front And Rear Anti-Roll Bars- GVWR: 6,800 lbs
- HD Shock Absorbers- Multi-Link Rear Suspension w/Coil Springs- Rear-Wheel Drive
- Short And Long Arm Front Suspension w/Coil Springs- Single Stainless Steel Exhaust
- Towing Equipment -inc: Trailer Sway Control- Trailer Wiring Harness
- Transmission w/Driver Selectable Mode, Sequential Shift Control w/Steering Wheel Controls and Oil Cooler
- Transmission: 8-Speed Automatic (845RE)



Auto Park Dallas

View this car on our website at autoparkdallas.com/7001596

Website: autoparkdallas.com

Phone: (214) 945-2601

Map: [2061 S Stemmons Fwy, Lewisville, TX 75067](#)

