

# 2003 Mercedes-Benz SL55 AMG

View this car on our website at [rpmgaragetx.com/7001199/ebrochure](http://rpmgaragetx.com/7001199/ebrochure)

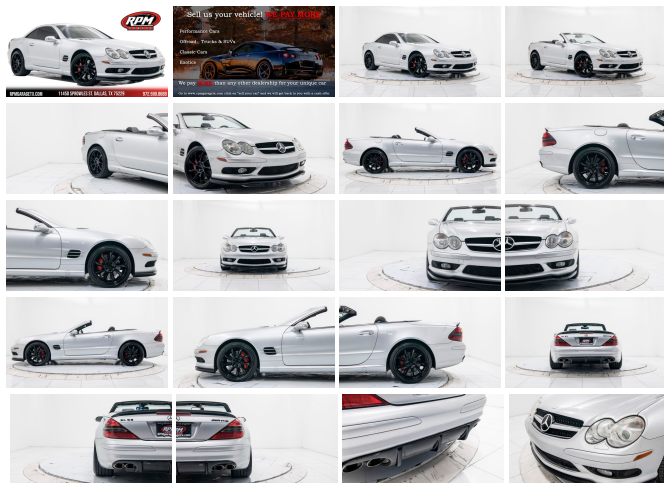


Our Price **\$21,991**

## Specifications:

<b>Year:</b>	2003
<b>VIN:</b>	WDBSK74F13F043255
<b>Make:</b>	Mercedes-Benz
<b>Model/Trim:</b>	SL55 AMG
<b>Condition:</b>	Pre-Owned
<b>Body:</b>	Convertible
<b>Exterior:</b>	Silver
<b>Engine:</b>	5.5L SOHC SMPI supercharged 24-valve V8 engine
<b>Interior:</b>	Black Leather
<b>Mileage:</b>	78,827
<b>Drivetrain:</b>	Rear Wheel Drive
<b>Economy:</b>	City 14 / Highway 20

RPMGARAGETX.COM 11450 SPROWLES ST. DALLAS, TX 75229 972.590.8689



RPM Garage is a specialty car dealership conveniently located off I-35E in Dallas, Texas. With over 100 cars in stock, and new inventory arriving every day, we offer a wide variety of quality vehicles to make your dreams come true. Make sure to stop by and check out our BRAND NEW 40,000 sq/ft warehouse and take your dream car home TODAY!

**LET US FINANCE**  
**YOUR DREAMS!**  
**CLICK HERE TO**  
**BEGIN!**

We are proud to offer you this 2003 Mercedes Benz SL55 AMG with Upgrades for sale!

This 2003 Mercedes-Benz SL55 AMG is one of the most versatile sports cars ever. Powered by a supercharged 5.5-liter V8 engine that produces 493 horsepower and 516 lb-ft of torque, this sleek machine offers performance that someone unfamiliar with this car would never expect. This power is sent to the rear wheels via a five-speed automatic transmission, ensuring a smooth driving experience with lightning-fast shifts under fast acceleration. Best yet, though, is the noise that comes from the monster under the hood, which travels through a quad-tip AMG exhaust and is violently unleashed on the world under hard acceleration.

To us, what's outside the engine bay is just as important as what's inside it, and this sleek SL55 AMG is no exception. The sleek exterior is fitted with a number of cosmetic upgrades, including a small ducktail spoiler, aftermarket front grill mesh, and an aggressive front lip. The car looks fantastic in the Desert Silver Metallic paint finish, which, when paired with 20" Lorinser alloy wheels and AMG hydraulic performance suspension, makes this car the very definition of a European sports car. The interior is no less perfect, coming equipped with supportive leather bucket seats, an infotainment system that offers many features far ahead of this car's time, and a Bose audio system that will provide the perfect soundtrack for top-down adventuring.

#### **LIST OF FEATURES & UPGRADES:**

5.5-Liter Supercharged V8 Engine

5-Speed Automatic Transmission

Quad-Tip AMG Exhaust  
AMG Hydraulic Suspension  
AMG Brakes with Drilled Rotors  
20" Lorinser Wheels  
AMG Ducktail Lip Spoiler  
AMG Diffuser  
Vented Hood  
AMG Front Bumper  
Aftermarket Front Grill Mesh  
Hardtop Convertible  
Leather AMG Bucket Seats  
Leather Interior Panels  
Leather Steering Wheel  
AMG Gauge Cluster  
Seat-Mounted Cupholder  
Bose Sound System  
Infotainment with Navigation, Integrated Phone,  
Radio

And Much More!

This incredible piece of German manufacturing  
is in every way a  
purebred European sports car, making it perfect  
to take home today!

**MSRP + Mods \$130,000+ RPM Price  
\$21,991**

At RPM Garage we love taking care of our  
customers and we are all about building a  
relationship with our clients to continue helping  
them in each and every one of their car needs  
for years to come. Become a part of our family  
and visit our showroom today!

We offer free airport pick-up, extended  
warranties, worldwide shipping, and much  
more! We welcome third party inspections! We

love TRADE-INS!!

EXCELLENT FINANCING OPTIONS!

CONTACT OUR SALES  
TEAM AT:

972-590-8689

[sales@rpmgaragetx.com](mailto:sales@rpmgaragetx.com)

[www.rpmgaragetx.com](http://www.rpmgaragetx.com)

[CLICK HERE TO SELL US  
YOUR CAR!](#)

We would love to buy your car. Click the text above ^^ to get an appraisal quote as soon as possible on your car, we would love to check it out. Whether you buy a car from us or not, we will still pay more for it than nearly any other dealership!

[HOURS OF OPERATION:](#)

Monday - Friday: 10AM - 6PM Saturday:  
10AM - 5PM Sunday: Closed

---

2003 Mercedes-Benz SL55 AMG

RPM Garage - 972-590-8689 - View this car on our website at [rpmgaragetx.com/7001199/ebrochure](http://rpmgaragetx.com/7001199/ebrochure)

## Our Location :



2003 Mercedes-Benz SL55 AMG

RPM Garage - 972-590-8689 - View this car on our website at [rpmgaragetx.com/7001199/ebrochure](http://rpmgaragetx.com/7001199/ebrochure)

## Installed Options

### Interior

- 12-way pwr/heated sport seats w/multi-contour seatbacks, 3-position memory & lumbar support
- Aluminum trim on console & doors
- Anti-theft alarm system w/starter interlock & tow-away protection
- Automatic dual zone climate control-inc: dust filter, residual-heat REST mode
- Bose sound system w/AudioPilot-inc: antitheft-coded AM/FM stereo/weather band radio & CD player/CD-Rom drive, CD changer controls, (8) speakers, navigation system & COMAND system
- Cruise control- Dual illuminated visor vanity mirrors- Dual reading lamps
- Dual retractable cup holders
- Hand-fitted leather seat trim, head restraints, dash, console, doors, armrests, roll bar, rear cabin panels, steering wheel & shift knob.
- Illuminated/climate controlled glove-box & armrest storage- Multi-function steering wheel
- Parcel net in right footwell- Pwr door locks w/central locking system
- Pwr tilt/telescoping steering column
- Pwr windows w/express-down control & 1-touch up/down for all windows
- Rear window defroster- Rearview mirror w/auto-dimming feature
- Remote illuminated entry
- Remote keyless entry-inc: doors, trunk release, (4) inside storage compartments, window closing
- Selective/programmable locking/unlocking
- Tele-Aid-inc: 24-hour contact w/Mercedes Benz for emergency aid, information, roadside assistance
- Universal integrated garage door opener- Velour carpeting & floor mats

### Exterior

- AMG designed front air dam, side skirts & rear apron - Attachable mesh wind deflector
- Auto-on Xenon high intensity discharge low-beam headlamps w/halogen high- beams & heated washers

- Dual aero-blade windshield wipers w/heated parking position & infrared rain sensor
- Dual heated pwr mirrors w/3-position memory & auto dimming driver mirror
- Electrohydraulic retractable aluminum hardtop- Halogen front foglamps- Red rear foglamp

---

## Safety

- 12-way pwr/heated sport seats w/multi-contour seatbacks, 3-position memory & lumbar support
- Aluminum trim on console & doors
- Anti-theft alarm system w/starter interlock & tow-away protection
- Automatic dual zone climate control-inc: dust filter, residual-heat REST mode
- Bose sound system w/AudioPilot-inc: anti-theft-coded AM/FM stereo/weather band radio & CD player/CD-Rom drive, CD changer controls, (8) speakers, navigation system & COMAND system
- Cruise control- Dual illuminated visor vanity mirrors- Dual reading lamps
- Dual retractable cup holders
- Hand-fitted leather seat trim, head restraints, dash, console, doors, armrests, roll bar, rear cabin panels, steering wheel & shift knob.
- Illuminated/climate controlled glove-box & armrest storage- Multi-function steering wheel
- Parcel net in right footwell- Pwr door locks w/central locking system
- Pwr tilt/telescoping steering column
- Pwr windows w/express-down control & 1-touch up/down for all windows
- Rear window defroster- Rearview mirror w/auto-dimming feature
- Remote illuminated entry
- Remote keyless entry-inc: doors, trunk release, (4) inside storage compartments, window closing
- Selective/programmable locking/unlocking
- Tele-Aid-inc: 24-hour contact w/Mercedes Benz for emergency aid, information, roadside assistance
- Universal integrated garage door opener- Velour carpeting & floor mats

---

## Mechanical

- 18" x 8.5" multispoke AMG aluminum front wheels
- 18" x 9.5" multispoke AMG aluminum rear wheels
- 4-wheel cross-drilled/ventilated disc brakes
- 5-speed automatic transmission-inc: fingertip manual mode & speedshift program
- 5.5L SOHC SMPI supercharged 24-valve V8 engine
- Active Body Control (ABC)-inc: coil spring & electronically controlled hydraulic cylinder w/AMG shock absorber at each wheel
- Anti-lock brake system (ABS)- Automatic slip control (ASR)
- Brake assist system (applies full braking pwr automatically when needed)
- Electronic Stability Program (ESP)
- Fully electronic ignition system w/knock sensor timing control
- Independent 4-link front/5-arm rear suspension w/anti-dive technology
- P255/40WR18 high-performance front tires- P285/35WR18 high-performance rear tires
- Rack & pinion vehicle-speed-sensitive pwr steering- Rear wheel drive
- Sensotronic brake control- TIREFIT puncture sealant in lieu of spare tire

---

RPM Garage

[rpmgaragetx.com](http://rpmgaragetx.com)

972-590-8689

11450 Sprowles St

Dallas, TX 75229

© 2021 AutoRevo - All rights reserved. - Powered by AutoRevo