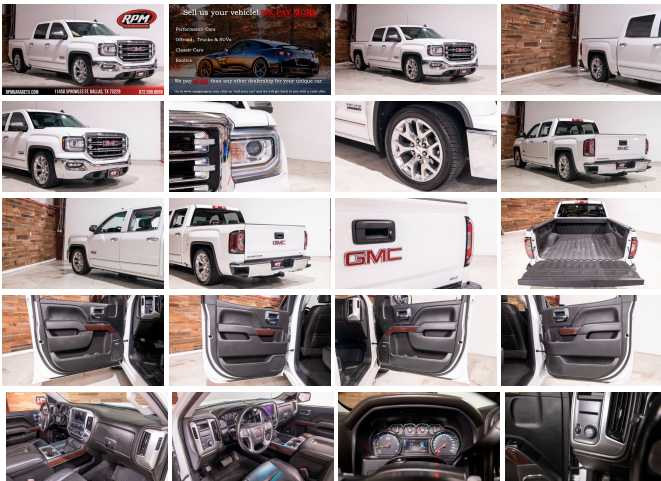


2018 GMC Sierra 1500 SLT Lowered

View this car on our website at rpmgaragetx.com/7001197/ebrochure



RPMGARAGETX.COM 11450 SPROWLES ST. DALLAS, TX 75229 972.590.8689



Our Price **\$36,991**

Specifications:

Year:	2018
VIN:	3GTP1NEC6JG510183
Make:	GMC
Model/Trim:	Sierra 1500 SLT Lowered
Condition:	Pre-Owned
Body:	Pickup Truck
Exterior:	White
Engine:	ENGINE, 5.3L ECOTEC3 V8, WITH ACTIVE FUEL MANAGEMENT, DIRECT INJECTION
Interior:	Black Leather
Mileage:	76,593
Drivetrain:	Rear Wheel Drive
Economy:	City 16 / Highway 22

RPM Garage is a specialty car dealership conveniently located off I-35E in Dallas, Texas. With over 100 cars in stock, and new inventory arriving every day, we offer a wide variety of quality vehicles to make your dreams come true. Make sure to stop by and check out our BRAND NEW 40,000 sq/ft warehouse and take your dream car home TODAY!

LET US FINANCE
YOUR DREAMS!
CLICK HERE TO
BEGIN!

We are proud to offer you this 2018 GMC Sierra
1500 SLT Lowered for sale!

1500 SLT Lowered for sale!

This 2018 GMC Sierra 1500 is one of the top American-made trucks on the market today, and the modifications that have been made to it make it even better. Under the hood, a 5.3-liter V8 engine sends 355 horsepower and 383 lb-ft of torque to the rear wheels, which makes utilizing this machine as a true “street truck” that much more fun.

This V8 also delivers an excellent rumble of noise out of the aftermarket single-tip exhaust, adding to the attention-getting quality of this machine. In addition to strong performance, however, this GMC has also received a lowering kit that drastically changes the look of the truck.

To us, what’s in the interior is just as important as what’s outside it, and this upgraded truck is no exception to this rule. This Sierra has been optioned up to the Texas Edition package, which offers a large number of amenities and features that the base model and lower trims don’t. Some of these options include adjustable leather seats, a fully-loaded infotainment system with Bluetooth, phone connectivity, and a rear camera, and plenty of smaller details like wood trim pieces, a sunroof, and leather paneling throughout the interior. This truck is also fitted with a full bedliner to protect the condition of the bed itself.

LIST OF FEATURES & UPGRADES:

5.3-Liter V8 Engine

6-Speed Automatic Transmission

Aftermarket Single-Tip Exhaust

Lowering Kit with Springs

20” GMC Alloy Wheels

Bedliner

Texas Edition Trim

Infotainment with Bluetooth, Phone
Connectivity, Rear Camera

Supple Leather Seats

Leather Interior Panels

Leather Steering Wheel

Wood Interior Trim

Multi-Zone A/C

Bose Audio System

And Much More!

This American workhorse is perfectly modified
to a fantastic spec, making it the perfect truck to
take home today!

**MSRP + Mods \$51,000+ RPM Price
\$36,991**

At RPM Garage we love taking care of our
customers and we are all about building a
relationship with our clients to continue helping
them in each and every one of their car needs
for years to come. Become a part of our family
and visit our showroom today!

We offer free airport pick-up, extended
warranties, worldwide shipping, and much
more! We welcome third party inspections! We
love **TRADE-INS!!**

EXCELLENT FINANCING OPTIONS!

**CONTACT OUR SALES
TEAM AT:**

972-590-8689

sales@rpmgaragetx.com

www.rpmgaragetx.com

[CLICK HERE TO SELL US YOUR CAR!](#)

We would love to buy your car. Click the text above ^^ to get an appraisal quote as soon as possible on your car, we would love to check it out. Whether you buy a car from us or not, we will still pay more for it than nearly any other dealership!

[HOURS OF OPERATION:](#)

Monday - Friday: 10AM - 6PM Saturday:
10AM - 5PM Sunday: Closed

2018 GMC Sierra 1500 SLT Lowered


RPM Garage - 972-590-8689 - View this car on our website at rpmgaragetx.com/7001197/ebrochure


Vehicle History Report : as Of 10/18/2021

CARFAX

Snapshot

2018 GMC SIERRA C1500 SLT


 No accidents or damage reported to CARFAX

 2 Previous owners

 14 Service history records

 Personal vehicle

 Last owned in Texas

 76,593 Last reported odometer reading



FREE CARFAX Report

See the full CARFAX Report for additional information

*carfax Snapshot is a reflection of available information on the date the report was pulled. carfax is constantly being updated with new information and is subject to change at any time.

Our Location :



2018 GMC Sierra 1500 SLT Lowered

RPM Garage - 972-590-8689 - View this car on our website at rpmgaragetx.com/7001197/ebrochure

Installed Options

Interior

- Air conditioning, dual-zone automatic climate control
- Assist handle, front passenger on A-pillar- Cruise control, steering wheel-mounted
- Defogger, rear-window electric- Door locks, power
- Driver Information Center, 4.2-inch diagonal color display includes driver personalization, warning messages and vehicle information
- Floor covering, color-keyed carpeting
- Floor mats, color-keyed carpeted first and second row (Not available with (GAT) All Terrain Package.)
- Instrumentation, 6-gauge cluster featuring speedometer, fuel level, engine temperature, tachometer, voltage and oil pressure
- Mirror, inside rearview auto-dimming
- OnStar 4G LTE and available built-in Wi-Fi hotspot offers a fast and reliable Internet connection for up to 7 devices; includes data trial for 3 months or 3GB (whichever comes first) DATA TRIAL OFFER GOOD THROUGH 4/30/2018 (Available Wi-Fi requires compatible mobile device, active OnStar service and data plan. Data plans provided by AT&T. Visit onstar.com for details and system limitations.)
- Pedals, power-adjustable- Power outlet, 110-volt AC
- Remote Keyless Entry (Includes (A91) remote locking tailgate.)
- Remote vehicle starter system
- Seat, rear 60/40 folding bench (folds up), 3-passenger (includes child seat top tether)

anchor)

- Seating, heated driver and front passenger Only available on Crew Cab and Double Cab models.
- Seats, front 40/20/40 leather-appointed split-bench, 3-passenger with (KA1) heated seat cushions and seat backs. Includes 10-way power driver and front passenger seat adjusters, including driver/front passenger power recline, driver/front passenger power lumbar, 2-position driver memory and adjustable outboard head restraints.
- Steering column, manual Tilt-Wheel and telescoping
- Steering wheel, leather-wrapped with audio and cruise controls
- Theft-deterrent system, unauthorized entry- Universal Home Remote
- Visors, driver and front passenger illuminated vanity mirrors
- Windows, power with driver express up and down and express down on all other windows

Exterior

- Active Aero Shutters, front- Bumper, front chrome lower
- Bumper, rear chrome with rear bumper corner steps - CornerStep, rear bumper
- Door handles, chrome- Fog lamps, thin profile LED- Glass, deep-tinted
- Grille surround, chrome
- Headlamps, high intensity discharge (HID) projector-beam with LED signature
- LED Lighting, cargo box with switch on center switch bank
- Lamps, cargo area, cab mounted with switch on center switch bank
- Mirror caps, chrome (Not available with (GAT) All Terrain Package and (NHT) max Trailering Package.)
- Mirrors, outside chrome cap, heated power-adjustable, power-folding and driver-side auto-dimming with integrated turn signal indicators and puddle lamps (includes driver's side spotter mirror)
- Moldings, bodyside, chrome
- Remote Locking Tailgate (Included and only available with (AQQ) Remote Keyless Entry.)
- Tailgate and bed rail protection caps, top - Tailgate, EZ-Lift and Lower
- Taillamps, LED with signature
- Tire carrier lock keyed cylinder lock that utilizes same key as ignition and door
- Tire, spare P265/70R17 all-season, blackwall- Tires, P265/65R18 all-season, blackwall
- Wheelhouse liners, rear (Requires Crew Cab or Double Cab model.)
- Wheels, 18" x 8.5" (45.7 cm x 21.6 cm) polished aluminum

Safety

- Air conditioning, dual-zone automatic climate control
- Assist handle, front passenger on A-pillar- Cruise control, steering wheel-mounted
- Defogger, rear-window electric- Door locks, power
- Driver Information Center, 4.2-inch diagonal color display includes driver personalization, warning messages and vehicle information
- Floor covering, color-keyed carpeting
- Floor mats, color-keyed carpeted first and second row (Not available with (GAT) All Terrain Package.)
- Instrumentation, 6-gauge cluster featuring speedometer, fuel level, engine temperature, tachometer, voltage and oil pressure
- Mirror, inside rearview auto-dimming
- OnStar 4G LTE and available built-in Wi-Fi hotspot offers a fast and reliable Internet connection for up to 7 devices; includes data trial for 3 months or 3GB (whichever comes first) DATA TRIAL OFFER GOOD THROUGH 4/30/2018 (Available Wi-Fi requires compatible mobile device, active OnStar service and data plan. Data plans provided by AT&T. Visit onstar.com for details and system limitations.)
- Pedals, power-adjustable- Power outlet, 110-volt AC
- Remote Keyless Entry (Includes (A91) remote locking tailgate.)
- Remote vehicle starter system
- Seat, rear 60/40 folding bench (folds up), 3-passenger (includes child seat top tether anchor)
- Seating, heated driver and front passenger Only available on Crew Cab and Double Cab models.
- Seats, front 40/20/40 leather-appointed split-bench, 3-passenger with (KA1) heated seat cushions and seat backs. Includes 10-way power driver and front passenger seat adjusters, including driver/front passenger power recline, driver/front passenger power lumbar, 2-position driver memory and adjustable outboard head restraints.
- Steering column, manual Tilt-Wheel and telescoping
- Steering wheel, leather-wrapped with audio and cruise controls
- Theft-deterrent system, unauthorized entry- Universal Home Remote
- Visors, driver and front passenger illuminated vanity mirrors
- Windows, power with driver express up and down and express down on all other windows

Mechanical

- Alternator, 150 amps (Not included with (PCQ) SLT eAssist Package.)
- Battery, heavy-duty 720 cold-cranking amps/80 Amp-hr, maintenance-free with rundown protection and retained accessory power
- Brakes, 4-wheel disc with DURALIFE rotors, 4-wheel antilock- Capless Fuel Fill

- Cargo tie downs (4), movable upper- Cooling, auxiliary external transmission oil cooler
- Cooling, external engine oil cooler- Differential, heavy-duty locking rear
- Engine, 5.3L EcoTec3 V8, with Active Fuel Management, Direct Injection and Variable Valve Timing, includes aluminum block construction (355 hp [265 kW] @ 5600 rpm, 383 lb-ft of torque [518 Nm] @ 4100 rpm; more than 300 lb-ft of torque from 2000 to 5600 rpm)
- Exhaust, aluminized stainless-steel muffler and tailpipe
- Frame, fully-boxed, hydroformed front section
- GVWR, 7000 lbs. (3175 kg) (Regular Cab requires K15903 model and (L83) 5.3L EcoTec3 V8 engine. Crew Cab and Double Cab requires a 2WD model and (L83) 5.3L EcoTec3 V8 engine or (L86) 6.2L EcoTec3 V8 engine. Not available with (NHT) Max Trailering Package.)
- Pickup box
- Rear axle, 3.08 ratio (Standard and only available on (L83) 5.3L EcoTec3 V8 engine. Not available with (RD3) 20" bright machined aluminum wheels, (NZP) 20" chrome clad aluminum, (RD5) 20" polished aluminum, (NZH) 20" bright machined aluminum with painted accents or 22" LPO wheels.)
- Rear wheel drive- Steering, Electric Power Steering (EPS) assist, rack-and-pinion
- Suspension Package
- Transmission, 6-speed automatic, electronically controlled with overdrive and tow/haul mode. Includes Cruise Grade Braking and Powertrain Grade Braking

Option Packages

Factory Installed Packages

ENGINE, 5.3L ECOTEC3 V8, WITH ACTIVE FUEL MANAGEMENT, DIRECT INJECTION
and Variable Valve Timing, includes aluminum block construction (355 hp [265 kW] @ 5600 rpm, 383 lb-ft of torque [518 Nm] @ 4100 rpm; more than 300 lb-ft of torque from 2000 to 5600 rpm)

RPM Garage

rpmgaragetx.com

972-590-8689

11450 Sprowles St

Dallas, TX 75229

© 2021 AutoRevo - All rights reserved. - Powered by AutoRevo