



2015 Chevrolet Camaro 2SS w/ Whipple Supercharger & More!

Website Price \$39,995

View this vehicle on our website at autoparkdallas.com



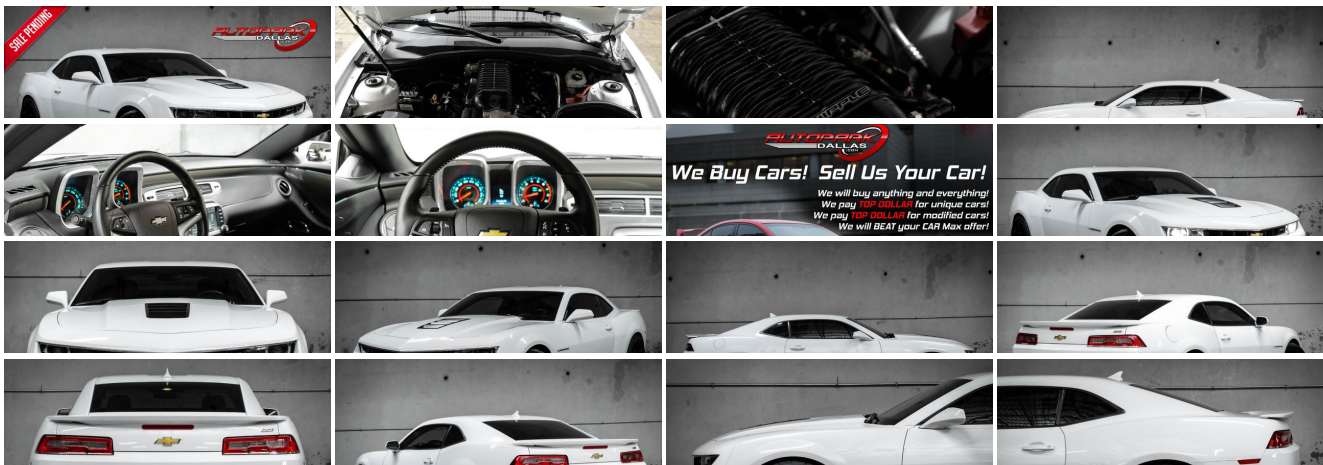
(214) 945-2601

2061 S Stemmons Fwy , Lewisville, TX 75067

Photos

Details

Contact





Specifications:

Year:	2015
VIN:	2G1FK1EJ2F9294343
Make:	Chevrolet
Model/Trim:	Camaro 2SS w/ Whipple Supercharger & More!
Condition:	Pre-Owned
Body:	Coupe
Exterior:	Summit White
Engine:	ENGINE, 6.2L V8 SFI
Interior:	Black Leather
Transmission:	TRANSMISSION, 6-SPEED AUTOMATIC
Mileage:	11,551
Drivetrain:	Rear Wheel Drive
Economy:	City 15 / Highway 24

Vehicle Description

AutoPark Dallas is thrilled to offer you this Low Mileage WHIPPLE Supercharged 2015 Chevrolet Camaro 2SS with Upgrades for sale! Already off the bat this Camaro has got eye appeal thanks to the beautiful factory 'Summit White' exterior, but what is under the hood gives that extra neck snapping action. The WHIPPLE Supercharger combined with the Stainless Steel Long Tube Headers, produces a nice whine and growl that will let everybody know when you punch the gas! If you are in search some fun American Muscle, then come check out this Camaro parked in our indoor 16,000 Sq Ft Showroom located in Dallas , Texas amongst our inventory of 100+ other Performance / Modified and Luxury cars!

2015 Chevrolet Camaro 2SS

* 2 Previous Owners !*

* Clean CarFax !*

* 2 Set of Keys !*

* LOW MILEAGE !*

* AMAZING CONDITION !*

* RS Package !*

MODIFICATIONS!

Stainless Steel Long-Tube Headers

Whipple Supercharger Kit

Whipple Cold-Air Intake Tube

Whipple Surge Tank

SLP Blackwing Cold-Air Intake

FlowMaster Exhaust System

Chevrolet Camaro Z/28 Gloss Black Wheels

Professionally Cut Hood Vent

Windows Tinted

STOCK!

Summit White Exterior

Black Leather Interior

Bluetooth

Heated Front Row Seats

Back-Up Camera

Rear Reverse Sensors

Digital Heads-Up Display

Single-Zone Air Conditioning

BOSE Premium Audio System

Manual Mode w/ Paddle Shifters

Cruise Control

Remote Start-Up

Daytime Running Lights

Factory BREMBO Brakes

Steering Wheel Mounted Controls

6.2L V8 SFI Engine

6-Speed Automatic Transmission

Rear Wheel Drive

Professionally Detailed!

Well Maintained!

*** Free CarFax Report !***

AND SO MUCH MORE!!!

Financing is available!

Check out our Payment Calculator to get an estimate on your monthly payments!

OR

Get pre-approved in no time by filling out a credit application on the 'Finance' section of our website!

Check out our Google Reviews by ***Clicking*** this [LINK!](#)

Referrals and Testimonials is what our business is built on!

The team here at AutoPark Dallas, is dedicated to offering a level of customer service not usually found in the automobile industry. Thanks to years of extensive car buying / selling experience, we pursue quality used and new vehicles that are hand-picked from factory sources. Our love for automobiles and dislike of traditional dealership tactics is what motivates us to provide the service we do! The pride we take in continuing this service long after the vehicle has been delivered is what we strive for! Looking forward to making every effort to see that our customer is completely satisfied and a friend for life!

Pre-purchase inspections are always welcomed!

We also offer airport pick-up, competitive financing options, free CarFax Reports, Car Shipping nationwide, Extended Warranty plans, and so much more!

#(214) 945-2601

Call or Text **Anytime!**

Se habla Español

WE BUY CARS!

WWW.AUTOPARKDALLAS.COM

Installed Options

Interior

- Air conditioning, single-zone manual- Air filtration system with pollen filter
- Coat hooks, driver- and passenger-side rear
- Compass, located in Driver Information Center - Console, floor, with armrest
- Cruise control, electronic with set and resume speed, steering wheel mounted
- Cup holders, 2 front- Dead pedal, driver- Defogger, rear-window, electric
- Door locks, power programmable with lockout protection
- Driver Information Center, color display- Floor mats, carpeted front
- Gauges, auxiliary, multi-function includes 4 gauges: oil pressure, battery voltage, oil temperature and transmission fluid temperature, mounted on center console forward of shifter
- Glovebox, lockable
- Head-Up Display with color digital readouts for vehicle speed, selected gear, G-Force, audio system information, high-beam indicator, compass, outside air temperature, turn signals, tachometer, vehicle messages, Turn-by-Turn information and phone information
- Instrumentation, analog includes speedometer, tachometer, fuel gauge and engine temperature gauge
- Lighting, front reading lamps
- Lighting, interior with illuminated entry and theater dimming - Map pockets, front doors
- Mirror, inside rearview auto-dimming, frameless
- Power outlets, 2 auxiliary 1 located in center console storage area and 1 located at front of center console
- Remote Keyless Entry
- Seat adjuster, driver, 6-way power (fore/aft, up/down, tilt) with power recliner
- Seat adjuster, front passenger, 6-way power (fore/aft, up/down, tilt) with power recliner
- Seat trim, front leather seating surfaces
- Seats, front Sport bucket includes adjustable head restraints and folding rear seat with trunk pass-through (Upgradeable to (AYZ) Recaro performance front seats. Includes passenger-side seatback map pocket.)
- Seats, heated driver and front passenger - Shift knob, leather-wrapped
- Sill plate, Chevrolet- Steering column, manual rake and telescopic
- Steering wheel, 3-spoke leather-wrapped- Theft-deterrent system, PASS-Key III
- Trunk release, remote, located on driver-side
- Universal Home Remote includes garage door opener, 3-channel programmable
- Visors, driver and front passenger vanity mirrors, covered
- Windows, power with driver and passenger Express-Down/Up

Exterior

- Tires, P245/45R20 front and P275/40R20 rear, blackwall, summer (Do not use summer-only tires in winter conditions, as it would adversely affect vehicle safety, performance and durability.)
- Wheels, 20" x 8" (50.8 cm x 20.3 cm) front and 20" x 9" (50.8 cm x 22.9 cm) rear flangeless, painted aluminum with Bright Silver finish
- Door handles, body-color- Fascias, front and rear body-color, SS-specific
- Fog lamps, front projector type
- Headlamps, halogen composite with automatic exterior lamp control - Hood blanket
- Mirrors, outside heated power-adjustable and driver-side auto-dimming, body-color

Option Packages

Factory Installed Packages

ENGINE, 6.2L V8 SFI

(400 hp [298.3 kW] @ 5900 rpm, 410 lb-ft of torque [553.5 N-m] @ 4300 rpm)

TRANSMISSION, 6-SPEED AUTOMATIC

includes TAPshift manual shift controls on steering wheel

\$1,295

DAYTIME RUNNING LAMPS, SEPARATE

HEADLAMPS, HIGH INTENSITY DISCHARGE

with automatic exterior lamp control

REMOTE VEHICLE STARTER SYSTEM

includes Remote Keyless Entry

RS PACKAGE

includes (R42) 20" x 8" front and 20" x 9" rear flangeless, painted aluminum wheels with Bright Silver-painted finish, (D80) rear spoiler, (BD8) body-color roof ditch molding, (T4F) high intensity discharge headlamps and (T3N) separate Daytime Running Lamps; shark-fin antenna is body-color

\$1,350

AXLE, 3.27 RATIO

EMISSIONS, FEDERAL REQUIREMENTS, 50-STATE CERTIFIED

SUMMIT WHITE

STANDARD PAINT

2SS PREFERRED EQUIPMENT GROUP

includes Standard Equipment

AUDIO SYSTEM, 7" DIAGONAL COLOR TOUCH SCREEN DISPLAY AM/FM STEREO

BLACK, FRONT LEATHER SEATING SURFACES

- Molding, Black roof ditch- Moldings, body-color lower rocker
- Spare tire and wheel, not desired tire sealant and inflator kit in place of spare tire
- Spoiler, rear- Tire sealant and inflator kit in place of spare tire - Wipers, front intermittent

Safety

- Air conditioning, single-zone manual- Air filtration system with pollen filter
- Coat hooks, driver- and passenger-side rear
- Compass, located in Driver Information Center - Console, floor, with armrest
- Cruise control, electronic with set and resume speed, steering wheel mounted
- Cup holders, 2 front- Dead pedal, driver- Defogger, rear-window, electric
- Door locks, power programmable with lockout protection
- Driver Information Center, color display- Floor mats, carpeted front
- Gauges, auxiliary, multi-function includes 4 gauges: oil pressure, battery voltage, oil temperature and transmission fluid temperature, mounted on center console forward of shifter
- Glovebox, lockable
- Head-Up Display with color digital readouts for vehicle speed, selected gear, G-Force, audio system information, high-beam indicator, compass, outside air temperature, turn signals, tachometer, vehicle messages, Turn-by-Turn information and phone information
- Instrumentation, analog includes speedometer, tachometer, fuel gauge and engine temperature gauge
- Lighting, front reading lamps
- Lighting, interior with illuminated entry and theater dimming - Map pockets, front doors
- Mirror, inside rearview auto-dimming, frameless
- Power outlets, 2 auxiliary 1 located in center console storage area and 1 located at front of center console
- Remote Keyless Entry
- Seat adjuster, driver, 6-way power (fore/aft, up/down, tilt) with power recliner
- Seat adjuster, front passenger, 6-way power (fore/aft, up/down, tilt) with power recliner
- Seat trim, front leather seating surfaces
- Seats, front Sport bucket includes adjustable head restraints and folding rear seat with trunk pass-through (Upgradeable to (AYZ) Recaro performance front seats. Includes passenger-side seatback map pocket.)
- Seats, heated driver and front passenger - Shift knob, leather-wrapped
- Sill plate, Chevrolet- Steering column, manual rake and telescopic
- Steering wheel, 3-spoke leather-wrapped- Theft-deterrent system, PASS-Key III
- Trunk release, remote, located on driver-side
- Universal Home Remote includes garage door opener, 3-channel programmable
- Visors, driver and front passenger vanity mirrors, covered
- Windows, power with driver and passenger Express-Down/Up

Mechanical

- Transmission, 6-speed manual- Alternator, 150 amps- Axle, 3.45 ratio
- Battery, maintenance-free with rundown protection and retained accessory power
- Brakes, 4-wheel antilock, 4-wheel disc (Brembo performance 4 piston front and 4 piston rear brakes.)
- Brakes, Brembo- Differential, limited slip
- Engine, 6.2L V8 SFI (426 hp [317.6 kW] @ 5900 rpm, 420 lb-ft of torque [567.0 N-m] @ 4600 rpm) (Requires (MN6) 6-speed manual transmission.)
- Exhaust, dual-outlet stainless-steel with bright tips - Rear wheel drive
- Steering, power, variable ratio, electric- Suspension, Performance

SEATS, FRONT SPORT BUCKET

includes adjustable head restraints and folding rear seat with trunk pass-through

Option Packages Total

\$2,645



Auto Park Dallas

View this car on our website at autoparkdallas.com/7001184

Website: autoparkdallas.com

Phone: (214) 945-2601

Map: [2061 S Stemmons Fwy, Lewisville, TX 75067](#)

