

# EVERYONE'S APPROVED

✓ Aceptamos Matricula

Hablamos Español

✓ Aceptamos ITN



✓ TOP \$ ON TRADE-INS

FREE  
CARFAX  
VEHICLE HISTORY REPORTS



CALL  
TEXT

(210) 687-3103

210autocredit.com

## 2012 Jeep Wrangler Unlimited Sport

**Discounted Cash Price \$24,598**

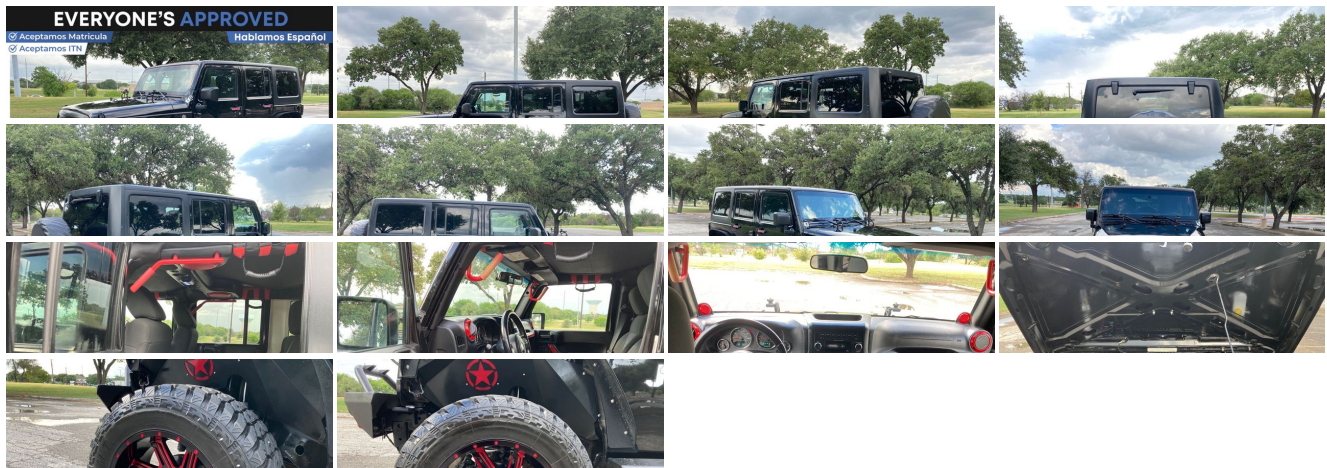
View this vehicle on our website at [210autocredit.com](http://210autocredit.com)



210-245-6955

402 N General McMullen Dr. , San Antonio, TX 78237

- Photos
- Details
- Contact



## Specifications:

<b>Year:</b>	2012
<b>VIN:</b>	1C4HJWDG4CL221677
<b>Make:</b>	Jeep
<b>Stock:</b>	646
<b>Model/Trim:</b>	Wrangler Unlimited Sport
<b>Condition:</b>	Pre-Owned
<b>Body:</b>	SUV
<b>Exterior:</b>	BLACK
<b>Engine:</b>	3.6L SMPi 24V VVT V6 ENGINE
<b>Interior:</b>	GRAY
<b>Mileage:</b>	145,578
<b>Drivetrain:</b>	4 Wheel Drive
<b>Economy:</b>	City 16 / Highway 20

## Vehicle Description

Top Reasons to buy from 210 Auto Credit:

- We have a RIGOROUS vehicle SELECTION PROCESS to ensure the safety of your NEW PURCHASE
- We go the extra mile to ensure ALL our vehicles have a COMPLETE DETAIL.
- Comprehensive Coverage available to PROTECT your asset
- Affordable Ownership
- Flexible Down Payments
- 125 Point Inspection
- 24 Month FREE Maintenance Plan included
- We take pride in delivering vehicles 100% mechanically and cosmetically.

## Installed Options

### Interior

- Cloth seat trim -inc: adjustable head restraints - Front & rear floor mats
- Low back bucket seats- Reclining front seats- Driver height adjustment
- 60/40 folding rear seat- Rear seat outboard head restraints- Full length floor console
- Storage tray- Front seat area carpet- Rear/cargo area carpet
- Cargo compartment floor mat- Tilt steering column
- Steering wheel mounted audio controls- Premium instrumentation w/tachometer
- Outside temp & compass gauge- Speed control- Sentry Key theft deterrent system
- Air conditioning- 12V aux pwr outlet- Sport bar w/full padding
- Sliding sunvisors w/mirrors- Front seatback map pockets
- Front dome light w/on/off switch- Rear dome light w/on/off switch
- Cargo compartment covered storage- Cargo tie down loops

### Exterior

- 16" x 7.0" lux styled steel wheels - P225/75R16 on/off-road BSW tires
- Black easy-folding soft top w/Sunrider feature - Full size spare tire
- Matching spare wheel- Sunrider soft top feature - Outside tire carrier
- Black front bumper- Black rear bumper- Accent color fender flares- Body color grille
- Halogen headlamps- Fog lamps- Tinted windshield glass- Front door tinted glass
- Manual fold-away exterior mirrors- Variable intermittent windshield wipers

### Safety

- Cloth seat trim -inc: adjustable head restraints - Front & rear floor mats
- Low back bucket seats- Reclining front seats- Driver height adjustment
- 60/40 folding rear seat- Rear seat outboard head restraints- Full length floor console
- Storage tray- Front seat area carpet- Rear/cargo area carpet
- Cargo compartment floor mat- Tilt steering column
- Steering wheel mounted audio controls- Premium instrumentation w/tachometer
- Outside temp & compass gauge- Speed control- Sentry Key theft deterrent system
- Air conditioning- 12V aux pwr outlet- Sport bar w/full padding
- Sliding sunvisors w/mirrors- Front seatback map pockets
- Front dome light w/on/off switch- Rear dome light w/on/off switch
- Cargo compartment covered storage- Cargo tie down loops

### Mechanical

- 6-speed manual transmission- 3.6L SMPI 24V VVT V6 engine - 3.21 axle ratio
- Engine oil cooler- Next generation Dana 30 solid front axle
- Next generation Dana 44 HD rear axle- Command-Trac shift-on-the-fly 4WD system
- 600-CCA maintenance free battery- 160-amp alternator- (2) front/(1) rear tow hooks
- Fuel tank skid plate- Transfer case skid plate- Normal duty suspension
- Front stabilizer bar- Rear stabilizer bar- Pwr steering- 4-wheel disc brakes
- Hydraulic assist brake boost

## Option Packages

### Factory Installed Packages

---

3.6L SMPI 24V VVT V6 ENGINE

---

FRONT SEAT SIDE AIR BAGS

\$495

---

Option Packages Total

\$495

210 Auto Credit

210 Auto Credit

View this car on our website at [210autocredit.com/6999666](http://210autocredit.com/6999666)

Website: [210autocredit.com](http://210autocredit.com)

Phone: [210-245-6955](tel:210-245-6955)

Map: [402 N General McMullen Dr., San Antonio, TX 78237](#)

