

2021 Ford F-150 XL

View this car on our website at askjorgelopez.com/6998209/ebrochure

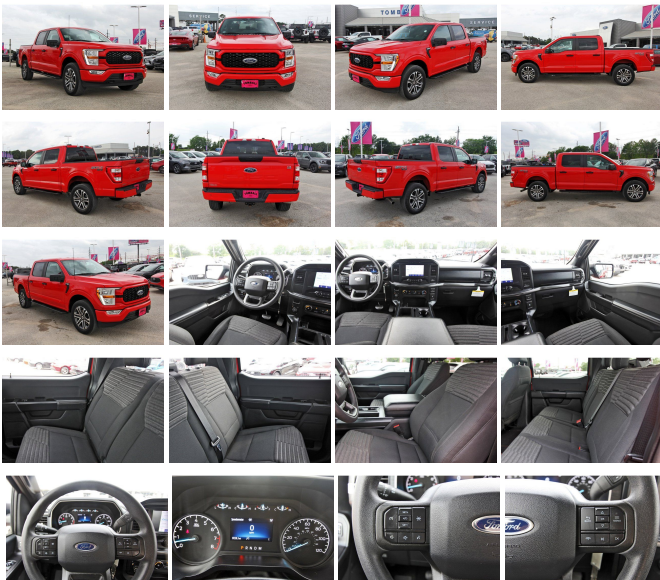


Our Price **\$37,998**

Specifications:

Year:	2021
VIN:	1FTFW1E50MKE38935
Make:	Ford
Stock:	MKE38935
Model/Trim:	F-150 XL
Condition:	Pre-Owned
Body:	Pickup Truck
Exterior:	RACE RED
Engine:	ENGINE: 5.0L V8
Interior:	BLACK
Mileage:	31,232
Drivetrain:	4 Wheel Drive
Economy:	City 16 / Highway 22

Come see this 2021 Ford F-150 . Its Automatic transmission and Regular Unleaded V8 5.0 L engine will keep you going. This Ford F-150 comes equipped with these options: ENGINE: 5.0L V8 -inc: auto start-stop technology and flex-fuel capability, GVWR: 7,050 lbs Payload Package, 3.31 Axle Ratio, Trip Computer, Transmission: Electronic 10-Speed Automatic -inc: selectable drive modes: normal, ECO, sport, tow/haul, slippery, deep snow/sand and mud/rut, Towing Equipment -inc: Trailer Sway Control, Tire Specific Low Tire Pressure Warning, Tailgate/Rear Door Lock Included w/Power Door Locks, Tailgate Rear Cargo Access, Streaming Audio, Steel Spare Wheel, and Solid Axle Rear Suspension w/Leaf Springs. See it for yourself at Tomball Ford, 22702 Tomball Parkway, Tomball, TX 77375.



2021 Ford F-150 XL

Ask Jorge Lopez - 281-205-0352 - View this car on our website at askjorgelopez.com/6998209/ebrochure

Vehicle History Report : as Of 05/20/2024



Snapshot

2021 FORD F-150 XL



No accidents or damage reported to CARFAX



8 Service history records



2 Previous owners



Personal vehicle



Last owned in Texas



31,232 Last reported odometer reading



FREE CARFAX Report

See the full CARFAX Report for additional information

*carfax Snapshot is a reflection of available information on the date the report was pulled. carfax is constantly being updated with new information and is subject to change at any time.

Our Location :



2021 Ford F-150 XL

Ask Jorge Lopez - 281-205-0352 - View this car on our website at askjorgelopez.com/6998209/ebrochure

Installed Options

Interior

- Cloth 40/20/40 Front Seat -inc: 2-way manual driver/passenger adjustment and armrest
- Power Rear Windows
- Remote Keyless Entry w/Integrated Key Transmitter, Illuminated Entry and Panic Button
- Manual Air Conditioning- Smart Device Remote Engine Start
- SYNC 4 -inc: 8" LCD capacitive touchscreen w/swipe capability, wireless phone connection, cloud connected, AppLink w/App catalog, 911 Assist, Apple CarPlay and Android Auto compatibility and digital owners manual
- Power 1st Row Windows w/Driver And Passenger 1-Touch Up/Down
- Power Door Locks w/Autolock Feature- Rear View Camera- Driver Seat
- Passenger Seat- 60-40 Folding Split-Bench Front Facing Fold-Up Cushion Rear Seat
- Manual Tilt/Telescoping Steering Column
- Gauges -inc: Speedometer, Odometer, Voltmeter, Oil Pressure, Engine Coolant Temp, Tachometer, Transmission Fluid Temp and Trip Odometer
- FordPass Connect 4G Mobile Hotspot Internet Access- Front Cupholder- Rear Cupholder
- Compass- HVAC -inc: Underseat Ducts- Locking Glove Box
- Interior Trim -inc: Cabback Insulator and Metal-Look Interior Accents - Full Cloth Headliner
- Urethane Gear Shifter Material- Day-Night Rearview Mirror
- Passenger Visor Vanity Mirror
- Full Overhead Console w/Storage and 1 12V DC Power Outlet - Front Map Lights

Option Packages

Factory Installed Packages

ENGINE: 5.0L V8	
-inc: auto start-stop technology and flex-fuel capability, GVWR: 7,050 lbs Payload Package, 3.31 Axle Ratio	\$1,995

Option Packages Total	\$1,995
-----------------------	---------

- Fade-To-Off Interior Lighting- Full Vinyl/Rubber Floor Covering- Pickup Cargo Box Lights
- Instrument Panel Bin, Dashboard Storage, Driver / Passenger And Rear Door Bins
- Delayed Accessory Power- Outside Temp Gauge- Analog Appearance
- Lane-Keeping System -inc: lane-keeping alert, lane-keeping aid and driver alert
- Pre-Collision Assist w/Automatic Emergency Braking -inc: pedestrian detection, forward collision warning and dynamic brake support
- Seats w/Cloth Back Material
- Manual Adjustable Front Head Restraints and Manual Adjustable Rear Head Restraints
- Securilock Anti-Theft Ignition (pats) Engine Immobilizer- Perimeter Alarm
- 1 12V DC Power Outlet

Exterior

- Wheels: 17" Silver Steel- Tires: 265/70R17 OWL A/T
- Full-Size Spare Tire Stored Underbody w/Crankdown
- Black Power Side Mirrors w/Convex Spotter and Manual Folding
- Tailgate/Rear Door Lock Included w/Power Door Locks
- Ford Co-Pilot360 - Autolamp Auto On/Off Aero-Composite Halogen Daytime Running Lights Preference Setting Headlamps w/Delay-Off
- Regular Box Style- Steel Spare Wheel- Clearcoat Paint- Black Rear Step Bumper
- Black Front Bumper w/Body-Colored Rub Strip/Fascia Accent and 2 Tow Hooks
- Black Side Windows Trim and Black Front Windshield Trim - Black Door Handles
- Fixed Rear Window- Light Tinted Glass- Variable Intermittent Wipers- Aluminum Panels
- Black Grille- Tailgate Rear Cargo Access- Cargo Lamp w/High Mount Stop Light
- Perimeter/Approach Lights- Auto High Beam

Safety

- Cloth 40/20/40 Front Seat -inc: 2-way manual driver/passenger adjustment and armrest
- Power Rear Windows
- Remote Keyless Entry w/Integrated Key Transmitter, Illuminated Entry and Panic Button
- Manual Air Conditioning- Smart Device Remote Engine Start
- SYNC 4 -inc: 8" LCD capacitive touchscreen w/swipe capability, wireless phone connection, cloud connected, AppLink w/App catalog, 911 Assist, Apple CarPlay and Android Auto compatibility and digital owners manual
- Power 1st Row Windows w/Driver And Passenger 1-Touch Up/Down
- Power Door Locks w/Autolock Feature- Rear View Camera- Driver Seat
- Passenger Seat- 60-40 Folding Split-Bench Front Facing Fold-Up Cushion Rear Seat
- Manual Tilt/Telescoping Steering Column
- Gauges -inc: Speedometer, Odometer, Voltmeter, Oil Pressure, Engine Coolant Temp, Tachometer, Transmission Fluid Temp and Trip Odometer
- FordPass Connect 4G Mobile Hotspot Internet Access- Front Cupholder- Rear Cupholder
- Compass- HVAC -inc: Underseat Ducts- Locking Glove Box
- Interior Trim -inc: Cabback Insulator and Metal-Look Interior Accents - Full Cloth Headliner
- Urethane Gear Shifter Material- Day-Night Rearview Mirror
- Passenger Visor Vanity Mirror
- Full Overhead Console w/Storage and 1 12V DC Power Outlet - Front Map Lights
- Fade-To-Off Interior Lighting- Full Vinyl/Rubber Floor Covering- Pickup Cargo Box Lights
- Instrument Panel Bin, Dashboard Storage, Driver / Passenger And Rear Door Bins
- Delayed Accessory Power- Outside Temp Gauge- Analog Appearance
- Lane-Keeping System -inc: lane-keeping alert, lane-keeping aid and driver alert
- Pre-Collision Assist w/Automatic Emergency Braking -inc: pedestrian detection, forward collision warning and dynamic brake support
- Seats w/Cloth Back Material
- Manual Adjustable Front Head Restraints and Manual Adjustable Rear Head Restraints
- Securilock Anti-Theft Ignition (pats) Engine Immobilizer- Perimeter Alarm
- 1 12V DC Power Outlet

Mechanical

- Engine: 3.3L V6 PFDI -inc: auto start-stop technology and flex-fuel capability
 - Transmission: Electronic 10-Speed Automatic -inc: selectable drive modes: normal, ECO, sport, tow/haul, slippery, deep snow/sand and mud/rut
 - 3.73 Axle Ratio- GVWR: 6,470 lbs Payload Package- Electronic Transfer Case
 - Part-Time Four-Wheel Drive
 - 70-Amp/Hr 610CCA Maintenance-Free Battery w/Run Down Protection
 - 200 Amp Alternator- Towing Equipment -inc: Trailer Sway Control- Trailer Wiring Harness
 - 1765# Maximum Payload- Gas-Pressurized Shock Absorbers- Front Anti-Roll Bar
 - Electric Power-Assist Steering- Single Stainless Steel Exhaust- 26 Gal. Fuel Tank
 - Auto Locking Hubs- Double Wishbone Front Suspension w/Coil Springs
 - Leaf Rear Suspension w/Leaf Springs
 - 4-Wheel Disc Brakes w/4-Wheel ABS, Front And Rear Vented Discs, Brake Assist, Hill Hold Control and Electric Parking Brake
-

Ask Jorge Lopez
askjorgelopez.com
281-205-0352

22702 Tomball Parkway
Tomball, TX 77375

© 2024 AutoRevo - All rights reserved. - Powered by [AutoRevo](#)