



2020 FORD F450 DRW 6.7L DIESEL 4X4 PLATINUM FLATBED ON 26" FORGIATOS A MUST SEE!

Our Price \$124,900

View this vehicle on our website at njtruckking.com

King of Cars and Trucks

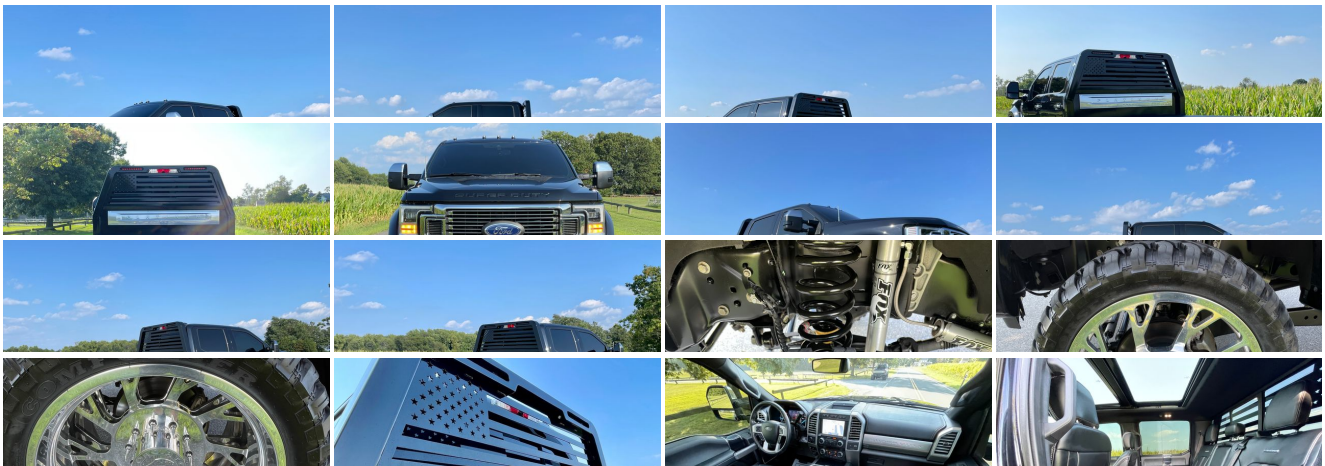
856-693-3181

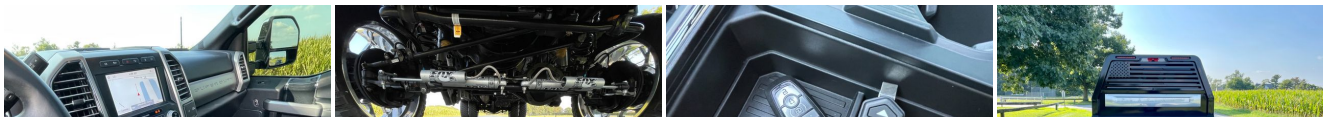
1229 Broadway , Westville, New Jersey 08093

Photos

Details

Contact





Specifications:

Year:	2020
VIN:	1FT8W4DT8LED44535
Make:	FORD F450 DRW 6.7L
Model/Trim:	DIESEL 4X4 PLATINUM FLATBED ON 26" FORGIATOS A MUST SEE!
Condition:	Pre-Owned
Body:	Pickup Truck
Exterior:	Black
Engine:	ENGINE: 6.7L 4V OHV POWER STROKE V8 TURBO DIESEL B20
Interior:	Black Leather
Transmission:	TRANSMISSION: TORQSHIFT 10-SPEED AUTOMATIC
Mileage:	32,683
Drivetrain:	4 Wheel Drive

Vehicle Description

PLATI F-450 FLATBED ON FORGIATOS!

2020 FORD F450 DRW 4X4
 ~PLATINUM~
 LOADED ALL OPTIONS
 6.7L POWERSTROKE TURBO DIESEL
 AUTOMATIC TRANSMISSION
 (ONLY 32,683 ORIGINAL / ACTUAL MILES)
 CUSTOM FLATBED
 26" FORGIATO WHEELS
 FLOATING CENTER CAPS
 37" TIRES

FOX RESERVOIR SHOCKS
 FOX RESERVOIR DUAL STEERING STABILIZERS
 TINTED
 STOCK POWERTRAIN
 REAR AIRBAGS WITH REMOTE
 KILLER LOOK TO IT
 WOW!
 ALL THE OPTIONS !
 PANO ROOF/ LEATHER / NAV & MORE!
 TRUCK IS IN MINT CONDITION !
 RUNS AND DRIVES EXCELLENT!
 IT IS A TRUE HEAD TURNER !
 WONT FIND ANOTHER LIKE IT!
 DONT MISS IT!

BUY IT NOW
 \$124,900
 CALL / TEXT ZACH 609-504-8808 WITH ANY QUESTIONS

Installed Options

Interior

- Driver And Passenger Visor Vanity Mirrors w/Driver And Passenger Illumination

Option Packages

Factory Installed Packages

- FOB Controls -inc: Cargo Access and Remote Engine Start
- Flow-Through Console -inc: 110V/400W outlet in rear
- Full Carpet Floor Covering -inc: Carpet Front And Rear Floor Mats
- Gauges -inc: Speedometer, Odometer, Engine Coolant Temp, Tachometer, Inclinator, Turbo/Supercharger Boost, Transmission Fluid Temp, Engine Hour Meter, Trip Odometer and Trip Computer
- Interior Trim -inc: Metal-Look Instrument Panel Insert, Genuine Wood/Chrome Door Panel Insert and Chrome/Metal-Look Interior Accents
- Memory Settings -inc: Driver Seat, Door Mirrors, Steering Wheel and Pedals
- Power 1st Row Windows w/Driver And Passenger 1-Touch Up/Down
- Power Door Locks w/Autolock Feature- Power Rear Windows
- Proximity Key For Doors And Push Button Start
- Remote Keyless Entry w/Integrated Key Transmitter, Illuminated Entry and Panic Button
- Seats w/Leatherette Back Material- Smart Device Remote Engine Start- Trip Computer
- Unique Platinum Leather 40/Console/40 Seats -inc: multi-contour, heated/ventilated, 10-way power driver and passenger seats (includes power lumbar), memory, 4-way adjustable driver and passenger headrests
- 110V/400W Outlet -inc: 1 in-dash mounted outlet - 2 Seatback Storage Pockets
- Air Filtration- Cruise Control w/Steering Wheel Controls
- Day-Night Auto-Dimming Rearview Mirror- Delayed Accessory Power- Distance Pacing
- Driver Seat- Fade-To-Off Interior Lighting
- FordPass Connect 4G Mobile Hotspot Internet Access- Front And Rear Map Lights
- Front Cupholder- Full Cloth Headliner- Full Overhead Console w/Storage
- Garage Door Transmitter- HVAC -inc: Underseat Ducts
- Heated Leather Steering Wheel w/Auto Tilt-Away- Illuminated Locking Glove Box
- Instrument Panel Covered Bin, Dashboard Storage, Driver / Passenger And Rear Door Bins and Locking 2nd Row Underseat Storage
- Integrated Navigation System w/Voice Activation- Keypad- Leather Door Trim Insert
- Manual Adjustable Rear Head Restraints- Outside Temp Gauge- Passenger Seat
- Perimeter Alarm- Power Adjustable Pedals- Power Tilt/Telescoping Steering Column
- Rear Cupholder- Securilock Anti-Theft Ignition (pats) Engine Immobilizer
- Split-Bench Front Facing Rear Seat- Systems Monitor
- Underhood And Pickup Cargo Box Lights- Urethane Gear Shifter Material
- Voice Activated Dual Zone Front Automatic Air Conditioning w/Steering Wheel Controls

Exterior

- Autolamp Auto On/Off Aero-Composite Led Low/High Beam Auto High-Beam Daytime Running Lights Preference Setting Headlamps w/Delay-Off
- Tailgate/Rear Door Lock Included w/Power Door Locks
- Tires: 225/70Rx19.5G BSW Traction -inc: Spare may not be the same as road tire
- Aluminum Grille- Aluminum Panels
- Black Side Windows Trim and Black Front Windshield Trim
- Body-Colored Front Bumper w/2 Tow Hooks- Body-Colored Rear Step Bumper
- Cab Clearance Lights- Cargo Lamp w/High Mount Stop Light- Chrome Door Handles
- Chrome Power Heated Side Mirrors w/Convex Spotter, Power Folding and Turn Signal Indicator
- Clearcoat Paint- Deep Tinted Glass- Front Fog Lamps- Front License Plate Bracket
- Full-Size Spare Tire Stored Underbody w/Crankdown- Headlights-Automatic Highbeams
- LED Brakelights- Perimeter/Approach Lights- Power Extendable Trailer Style Mirrors
- Power Rear Window w/Defroster- Power Running Boards
- Rain Detecting Variable Intermittent Wipers w/Heated Wiper Park- Regular Box Style
- Retractable Rear Step- Steel Spare Wheel- Tailgate Rear Cargo Access
- Wheels: 19.5" Forged Polished Aluminum -inc: 4 aluminum outer and 2 steel inner, bright hub covers/center ornaments

Safety

- Driver And Passenger Visor Vanity Mirrors w/Driver And Passenger Illumination
- FOB Controls -inc: Cargo Access and Remote Engine Start
- Flow-Through Console -inc: 110V/400W outlet in rear
- Full Carpet Floor Covering -inc: Carpet Front And Rear Floor Mats
- Gauges -inc: Speedometer, Odometer, Engine Coolant Temp, Tachometer, Inclinator, Turbo/Supercharger Boost, Transmission Fluid Temp, Engine Hour Meter, Trip Odometer and Trip Computer
- Interior Trim -inc: Metal-Look Instrument Panel Insert, Genuine Wood/Chrome Door Panel Insert and Chrome/Metal-Look Interior Accents
- Memory Settings -inc: Driver Seat, Door Mirrors, Steering Wheel and Pedals
- Power 1st Row Windows w/Driver And Passenger 1-Touch Up/Down
- Power Door Locks w/Autolock Feature- Power Rear Windows
- Proximity Key For Doors And Push Button Start
- Remote Keyless Entry w/Integrated Key Transmitter, Illuminated Entry and Panic Button
- Seats w/Leatherette Back Material- Smart Device Remote Engine Start- Trip Computer
- Unique Platinum Leather 40/Console/40 Seats -inc: multi-contour, heated/ventilated, 10-way power driver and passenger seats (includes power lumbar), memory, 4-way

ENGINE: 6.7L 4V OHV POWER STROKE V8 TURBO DIESEL B20

-inc: manual push-button engine-exhaust
braking and intelligent oil-life monitor

TRANSMISSION: TORQSHIFT 10-SPEED AUTOMATIC

-inc: SelectShift and selectable drive modes:
normal, tow/haul, eco, deep sand/snow and
slippery

- adjustable driver and passenger headrests
- 110V/400W Outlet -inc: 1 in-dash mounted outlet - 2 Seatback Storage Pockets
- Air Filtration- Cruise Control w/Steering Wheel Controls
- Day-Night Auto-Dimming Rearview Mirror- Delayed Accessory Power- Distance Pacing
- Driver Seat- Fade-To-Off Interior Lighting
- FordPass Connect 4G Mobile Hotspot Internet Access- Front And Rear Map Lights
- Front Cupholder- Full Cloth Headliner- Full Overhead Console w/Storage
- Garage Door Transmitter- HVAC -inc: Underseat Ducts
- Heated Leather Steering Wheel w/Auto Tilt-Away- Illuminated Locking Glove Box
- Instrument Panel Covered Bin, Dashboard Storage, Driver / Passenger And Rear Door Bins and Locking 2nd Row Underseat Storage
- Integrated Navigation System w/Voice Activation- Keypad- Leather Door Trim Insert
- Manual Adjustable Rear Head Restraints- Outside Temp Gauge- Passenger Seat
- Perimeter Alarm- Power Adjustable Pedals- Power Tilt/Telescoping Steering Column
- Rear Cupholder- Securilock Anti-Theft Ignition (pats) Engine Immobilizer
- Split-Bench Front Facing Rear Seat- Systems Monitor
- Underhood And Pickup Cargo Box Lights- Urethane Gear Shifter Material
- Voice Activated Dual Zone Front Automatic Air Conditioning w/Steering Wheel Controls

Mechanical

- Class V Towing Equipment -inc: Hitch, Brake Controller and Trailer Sway Control
- 4-Wheel Disc Brakes w/4-Wheel ABS, Front And Rear Vented Discs, Brake Assist and Hill Hold Control
- 48 Gal. Fuel Tank- 50-State Emissions System- 5320# Maximum Payload
- 78-Amp/Hr 750CCA Maintenance-Free Battery w/Run Down Protection
- Auto Locking Hubs- Dual Rear Wheels- Electronic Transfer Case
- Engine: 6.7L 4V OHV Power Stroke V8 Turbo Diesel B20 -inc: manual push-button engine-exhaust braking and intelligent oil-life monitor
- Firm Suspension- Front And Rear Anti-Roll Bars- Front Suspension w/Coil Springs
- GVWR: 14,000 lb Payload Package- HD 220 Amp Alternator- HD Shock Absorbers
- Hydraulic Power-Assist Speed-Sensing Steering- Leaf Rear Suspension w/Leaf Springs
- Limited Slip w/4.30 Axle Ratio- Part-Time Four-Wheel Drive
- Single Stainless Steel Exhaust w/Chrome Tailpipe Finisher- Trailer Wiring Harness
- Transmission: TorqShift 10-Speed Automatic -inc: SelectShift and selectable drive modes: normal, tow/haul, eco, deep sand/snow and slippery

King of Cars and Trucks

King of Cars and Trucks

View this car on our website at njtruckking.com/6998017

Website: njtruckking.com

Phone: [856-693-3181](tel:856-693-3181)

Map: [1229 Broadway, Westville, New Jersey 08093](#)

