

2021 Jeep Gladiator Rubicon 4X4 DUPONT KEVLAR,LIFTED,BUMPERS,LED'S

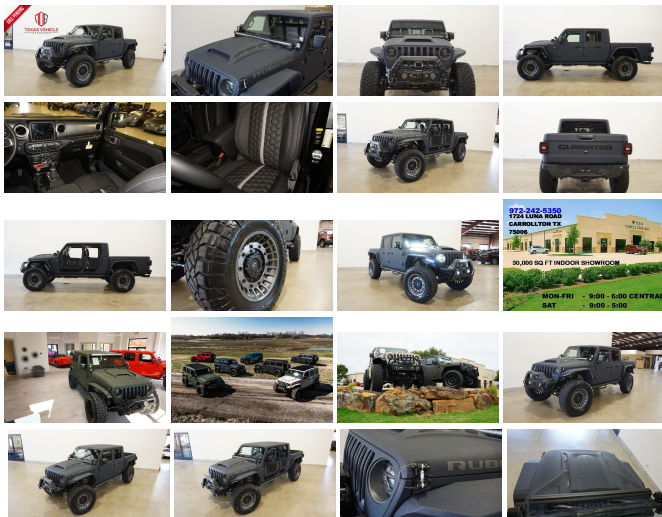
View this car on our website at tveauto.com/6996919/ebrochure



Our Price **\$94,900**

Specifications:

Year:	2021
VIN:	1C6JTBG7ML587855
Make:	Jeep
Stock:	587855
Model/Trim:	Gladiator Rubicon 4X4 DUPONT KEVLAR,LIFTED,BUMPERS,LED'S
Condition:	Pre-Owned
Body:	Pickup Truck
Exterior:	Blue
Engine:	ENGINE: 3.6L V6 24V VVT UPG I W/ESS
Interior:	Black Leather
Transmission:	TRANSMISSION: 8-SPEED AUTOMATIC (850RE)
Mileage:	77
Drivetrain:	4 Wheel Drive
Economy:	City 16 / Highway 22



NATION WIDE FINANCING

SUBMIT CREDIT APP WWW.TVEAUTO.COM

OR CALL 972-242-5350

"FERRARI NART BLUE EDITION"

CUSTOM BUILT **KEVLAR** 2021 JEEP
GLADIATOR RUBICON 4X4 WITH 24R
PACKAGE

UPGRADES INCLUDE:

UPGRADES INCLUDE:

- * FERRARI NART BLUE KEVLAR COATING WITH ANTHRACITE ACCENTS
- * CUSTOM ALEA BLACK LEATHER WITH SILVER STITCHING
- * FACTORY REMOTE START
- * REMOTE PROXIMITY KEYLESS ENTRY
- * COLD WEATHER GROUP
- * ACTIVE SAFETY GROUP
- * TRAILER TOW PACKAGE
- * FACTORY 8.4 INCH TOUCH SCREEN NAVIGATION WITH HD AM/FM/SIRIUS STEREO & ALPINE PREMIUM AUDIO SYSTEM
- * FACTORY BACK-UP CAMERA
- * U-CONNECT
- * 4 BODY ARMOR TRAIL DOORS & RECON MIRRORS
- * SMITTYBILT STRYKER JT FRONT BUMPER WITH LED LIGHT BAR & LED FOGLIGHTS
- * FRONT D-RINGS & ISOLATORS (ANTHRACITE)
- * SMITTYBILT NEW GEN II "X20" 10,000 LB WATERPROOF AND WIRELESS CONTROL WINCH WITH SYNTHETIC ROPE
- * FACTOR 55 PROLINK (BLACK)
- * FACTORY LED HEADLIGHTS
- * RUGGED RIDGE BLACK HEADLIGHT GUARDS
- * NEW JT CUSTOM VENTED HOOD
- * DRAKE OFF ROAD HOOD LATCHES
- * ROAD ARMOR STEALTH JT FENDER FLARES
- * DV8 OFF ROAD FRONT & REAR INNER FENDERS
- * DURIGON EXPRESS 3.5" SUSPENSION

^ RUBICON EXPRESS 3.5" SUSPENSION
LIFT KIT WITH TERAFLX FALCON SHOCKS

* TERAFLX FALCON STABILIZER KIT

* MOPAR AUXILIARY SWITCH BANK KIT

* 50" LED LIGHT BAR AND 4 RIGID
INDUSTRIES DUALY D2 LED PILLAR
LIGHTS

* N-FAB BLACK TUBULAR STEPS

* SPRAY IN BEDLINER

* DV8 OFF ROAD REAR BUMPER WITH
REAR PARK DISTANCE SENSORS

* MAGNAFLOW CAT-BACK BLACK EXHAUST
SYSTEM

* ALL WEATHER FLOOR MATS

* TAZER JL PROGRAMMER WITH
SPEEDOMETER CALIBRATION

* 20" FUEL ANTHRACITE W/MATTE BLACK
"MILITIA" WHEELS

* BRAND NEW NITTO RIDGE GRAPPLER
38X13.50R/20 TIRES

**WE BUILD EVERY JEEP WITH PRIDE! DO
NOT HESITATE TO CALL US WITH THIS
JEEP BUILD. WE CAN MAKE CHANGES TO
THIS JEEP BUILD OR CUSTOM BUILD ANY
JEEP TO YOUR PREFERENCE. GIVE US A
CALL @ 972-242-5350 OR STOP BY FOR A
TEST DRIVE. 1724 LUNA RD IN
CARROLLTON - 2 MILES NORTH OF 635.**

Our Location :



2021 Jeep Gladiator Rubicon 4X4 DUPONT KEVLAR,LIFTED,BUMPERS,LED'S
 Texas Vehicle Exchange - 972-242-5350 - View this car on our website at veauto.com/6996919/ebrochure

Installed Options

Interior

- 6-Way Driver Seat -inc: Manual Recline, Height Adjustment, Fore/Aft Movement and Manual Lumbar Support
- Front Seats w/Cloth Back Material and Manual Driver Lumbar
- Full Carpet Floor Covering -inc: Carpet Front And Rear Floor Mats
- Gauges -inc: Speedometer, Odometer, Voltmeter, Oil Pressure, Engine Coolant Temp, Tachometer, Engine Hour Meter, Trip Odometer and Trip Computer
- Power 1st Row Windows w/Driver And Passenger 1-Touch Down
- Power Door Locks w/Autolock Feature- Power Rear Windows
- Premium Cloth Low-Back Bucket Seats- Proximity Key For Push Button Start Only
- Remote Keyless Entry w/Integrated Key Transmitter, Illuminated Entry and Panic Button
- Trip Computer- 2 12V DC Power Outlets
- 2 12V DC Power Outlets and 1 120V AC Power Outlet - 2 Seatback Storage Pockets
- 4-Way Passenger Seat -inc: Manual Recline and Fore/Aft Movement
- 60-40 Folding Split-Bench Front Facing Fold Forward Seatback Premium Cloth Rear Seat
- 97 mph Maximum Speed Calibration- Air Filtration- Analog Appearance- Compass
- Cruise Control w/Steering Wheel Controls- Day-Night Rearview Mirror
- Delayed Accessory Power
- Driver And Passenger Visor Vanity Mirrors w/Driver And Passenger Illumination
- Fade-To-Off Interior Lighting- Front And Rear Map Lights
- Front Center Armrest w/Storage
- Full Floor Console w/Locking Storage, 2 12V DC Power Outlets and 1 120V AC Power Outlet
- Garage Door Transmitter- HVAC -inc: Console Ducts- Illuminated Front Cupholder
- Illuminated Rear Cupholder
- Instrument Panel Bin, Dashboard Storage, Driver / Passenger And Rear Door Bins
- Interior Trim -inc: Metal-Look Instrument Panel Insert, Metal-Look Door Panel Insert, Metal-Look Console Insert and Metal-Look Interior Accents
- Leather Steering Wheel- Locking Glove Box
- Manual Adjustable Front Head Restraints and Foldable Rear Head Restraints

Option Packages

Factory Installed Packages

ENGINE: 3.6L V6 24V VVT UPG I W/ESS

TRANSMISSION: 8-SPEED AUTOMATIC (850RE)
 -inc: Tip Start, Transmission Skid Plate, Selec-Speed Control \$2,000

8.4" RADIO & PREMIUM AUDIO GROUP
 -inc: Emergency/Assistance Call, SiriusXM Traffic Plus, Alpine Premium Audio System, HD Radio, Radio: Uconnect 4C Nav w/8.4" Display, Rear View Auto Dim Mirror, For Details, Visit DriveUconnect.com, 1-Year SiriusXM Guardian Trial, 5-Year SiriusXM Travel Link Service, 5-Year SiriusXM Traffic Service, SiriusXM Travel Link \$1,995

AUXILIARY SWITCH GROUP
 -inc: 700 Amp Maintenance Free Battery, 240 Amp Alternator, Auxiliary Switches \$345

BLACK 3-PIECE HARD TOP
 -inc: Freedom Panel Storage Bag, Rear Window Defroster, Rear Sliding Window \$1,545

COLD WEATHER GROUP
 -inc: Heated Steering Wheel, Heated Front Seats \$995

REMOTE PROXIMITY KEYLESS ENTRY

- Manual Tilt/Telescoping Steering Column- Outside Temp Gauge- Perimeter Alarm
- Redundant Digital Speedometer- Sentry Key Engine Immobilizer
- Smart Device Integration- Systems Monitor- Urethane Gear Shifter Material
- Voice Activated Dual Zone Front Automatic Air Conditioning

Exterior

- Auto On/Off Aero-Composite Halogen Daytime Running Headlamps w/Delay-Off
- Black Front Bumper w/2 Tow Hooks- Black Rear Bumper w/2 Tow Hooks
- Front Fog Lamps- Manual Convertible Top w/Fixed Roll-Over Protection
- Tailgate/Rear Door Lock Included w/Power Door Locks- Tires: LT285/70R17C BSW A/T
- Wheels: 17" x 7.5" Granite Crystal Aluminum - Black Door Handles
- Black Power Heated Side Mirrors w/Manual Folding- Black Side Windows Trim
- Black Wheel Well Trim and Black Fender Flares- Body-Color Grille w/Colored Accents
- Clearcoat Paint w/Badging- Deep Tinted Glass
- Full-Size Spare Tire Stored Underbody w/Crankdown- Galvanized Steel/Aluminum Panels
- Regular Box Style- Removable Rear Window- Steel Spare Wheel
- Tailgate Rear Cargo Access- Variable Intermittent Wipers

Safety

- 6-Way Driver Seat -inc: Manual Recline, Height Adjustment, Fore/Aft Movement and Manual Lumbar Support
- Front Seats w/Cloth Back Material and Manual Driver Lumbar
- Full Carpet Floor Covering -inc: Carpet Front And Rear Floor Mats
- Gauges -inc: Speedometer, Odometer, Voltmeter, Oil Pressure, Engine Coolant Temp, Tachometer, Engine Hour Meter, Trip Odometer and Trip Computer
- Power 1st Row Windows w/Driver And Passenger 1-Touch Down
- Power Door Locks w/Autolock Feature- Power Rear Windows
- Premium Cloth Low-Back Bucket Seats - Proximity Key For Push Button Start Only
- Remote Keyless Entry w/Integrated Key Transmitter, Illuminated Entry and Panic Button
- Trip Computer- 2 12V DC Power Outlets
- 2 12V DC Power Outlets and 1 120V AC Power Outlet - 2 Seatback Storage Pockets
- 4-Way Passenger Seat -inc: Manual Recline and Fore/Aft Movement
- 60-40 Folding Split-Bench Front Facing Fold Forward Seatback Premium Cloth Rear Seat
- 97 mph Maximum Speed Calibration- Air Filtration- Analog Appearance- Compass
- Cruise Control w/Steering Wheel Controls- Day-Night Rearview Mirror
- Delayed Accessory Power
- Driver And Passenger Visor Vanity Mirrors w/Driver And Passenger Illumination
- Fade-To-Off Interior Lighting- Front And Rear Map Lights
- Front Center Armrest w/Storage
- Full Floor Console w/Locking Storage, 2 12V DC Power Outlets and 1 120V AC Power Outlet
- Garage Door Transmitter- HVAC -inc: Console Ducts- Illuminated Front Cupholder
- Illuminated Rear Cupholder
- Instrument Panel Bin, Dashboard Storage, Driver / Passenger And Rear Door Bins
- Interior Trim -inc: Metal-Look Instrument Panel Insert, Metal-Look Door Panel Insert, Metal-Look Console Insert and Metal-Look Interior Accents
- Leather Steering Wheel- Locking Glove Box
- Manual Adjustable Front Head Restraints and Foldable Rear Head Restraints
- Manual Tilt/Telescoping Steering Column- Outside Temp Gauge- Perimeter Alarm
- Redundant Digital Speedometer- Sentry Key Engine Immobilizer
- Smart Device Integration- Systems Monitor- Urethane Gear Shifter Material
- Voice Activated Dual Zone Front Automatic Air Conditioning

Mechanical

- 4-Wheel Disc Brakes w/4-Wheel ABS, Front And Rear Vented Discs, Brake Assist and Hill Hold Control
- Brake Actuated Limited Slip Differential
- Class II Towing Equipment -inc: Hitch and Trailer Sway Control
- Driver Selectable Front Locking Differential - Driver Selectable Rear Locking Differential
- Transmission: 6-Speed Manual- 1200# Maximum Payload- 22 Gal. Fuel Tank
- 220 Amp Alternator- 4.10 Rear Axle Ratio- 50 State Emissions
- 650CCA Maintenance-Free Battery w/Run Down Protection- 7 Skid Plates
- Auto Locking Hubs- Electro-Hydraulic Power Assist Steering
- Engine Auto Stop-Start Feature- Engine Oil Cooler
- Engine: 3.6L V6 24V VVT UPG I w/ESS - Fox Brand Name Shock Absorbers
- Front Active w/Driver Control Anti-Roll Bar and Rear Anti-Roll Bar
- GVWR: 6,250 lbs w/Max Tow Package- Leading Link Front Suspension w/Coil Springs
- Manual Transfer Case- Part-Time Four-Wheel Drive- Performance Suspension
- Single Stainless Steel Exhaust- Trailer Wiring Harness
- Trailing Arm Rear Suspension w/Coil Springs

\$645

SAFETY GROUP

- inc: ParkSense Rear Park Assist System, Blind Spot & Cross Path Detection

\$995

TRAILER TOW PACKAGE

- inc: Trailer Hitch Zoom, Class IV Hitch Receiver, Heavy Duty Engine Cooling, 240 Amp Alternator

\$495

QUICK ORDER PACKAGE 24R

- inc: Engine: 3.6L V6 24V VVT UPG I w/ESS, Transmission: 8-Speed Automatic (850RE)

Option Packages Total

\$9,015

Texas Vehicle Exchange

tveauto.com

972-242-5350

1724 Luna Road

Carrollton, TX 75006

© 2024 AutoRevo - All rights reserved. - Powered by [AutoRevo](#)