

3075 Leon Rd
Jacksonville , FL 32246

2021 Jeep Gladiator Sport S Diesel

Nolan Hill

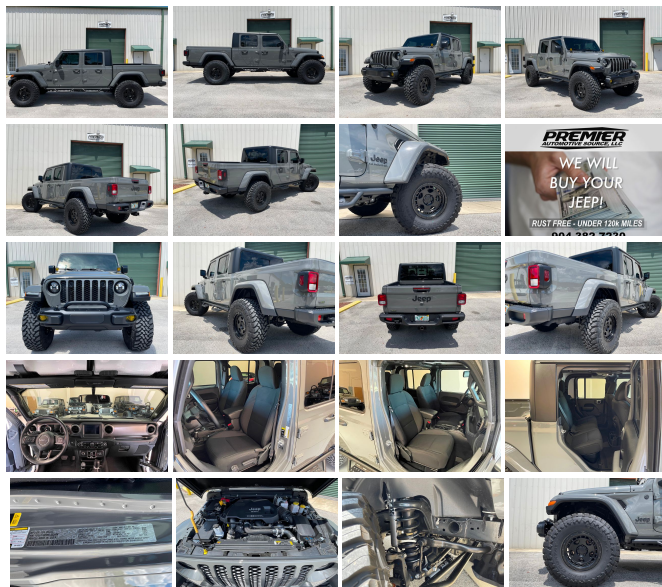
View this car on our website at premierautomotivesource.com/6996522/ebrochure



Our Price **\$0**

Specifications:

Year:	2021
VIN:	1C6JJTAM2ML553474
Make:	Jeep
Model/Trim:	Gladiator Sport S Diesel
Condition:	Pre-Owned
Body:	Pickup Truck
Exterior:	Sting-Gray Clearcoat
Engine:	ENGINE: 3.0L V6 TURBO DIESEL W/ESS G3
Interior:	Black Cloth
Transmission:	TRANSMISSION: 8-SPEED AUTOMATIC (8HP75)
Mileage:	11,500
Drivetrain:	4 Wheel Drive
Economy:	City 16 / Highway 22



2021 JEEP GLADIATOR

- 3.0 ECO DIESEL ENGINE OPTION -

- 2" MOPAR SUSPENSION LIFT -

- FOX SHOCKS & STEERING STABILIZER -

- 17X9 FIFTEEN52 TURBOMAC WHEELS -

- 37X12.50X17 TOYO OPEN COUNTRY M/T'S -

-

- BAJA DESIGNS SQUADRON LED LIGHTS -

- N FAB SIDE STEPS -

- STEEL RUBICON FRONT BUMPER -

- QUAKE LED DRL LIGHTS -

- LED HEADLIGHTS -

- TINTED WINDOWS -

PAINTED WINDOWS

- 3 PIECE REMOVABLE HARDTOP -
- DANA 44 FRONT & REAR AXLES -
- TOW PACKAGE -
- PAINTED FENDER FLARES -
- APPLE CAR PLAY & GOOGLE ANDROID AUTO -
- REAR CAMERA -
- U-CONNECT -
- REMOTE START -
- **CALL OR TEXT NOLAN @
904.382.7230** -

- LIVE WALK AROUND VIDEO AVAILABLE -
- WE TAKE TRADE INS -
- WE SELL & SHIP WORLDWIDE -

2021 Jeep Gladiator, Sting Gray with black interior, powerful 3.0 Turbo Diesel V6, 8 Speed Automatic transmission, 2" Mopar suspension lift, Fox shocks & Fox steering stabilizer, Fifteen52 Turbomac wheels with 37x12.50x17 Toyo Open Country M/T tires, steel Rubicon front bumper with LED fog lights, Quake LED running lights, LED headlights, Baja Designs Squadron sport LED's, and a Hypertech Flash Cal. calibrated to the 37" tires. Black 3 Piece removable Hardtop, Remote start, Apple Car Play/Google Android Auto, rearview camera, USB, SAT Radio, U-Connect Bluetooth. The ECO Diesel V6 makes lots of power and is very efficient, the 8 speed automatic transmission shifts smooth, the 4WD engages easily. This beautiful Jeep runs, drives, and looks amazing! I am the only owner, only driven by me and my wife, always garage kept, never off road. I purchased it brand new, purchased all the parts and had them professionally installed. It has a clean Carfax, I have the title in hand, factory warranty remaining, sale includes 2 keys, books, window sticker, bag for the top panels, carpet floor mats and plastic all weather floor mats, rubber bed

mat, and factory Rubicon front bumper end pieces. If you want to add custom leather, or any other combination of accessories, let us know and we can help you build the Jeep of your dreams!

For financing we recommend LightStream, a division of SunTrust Bank, to offer low-interest financing to people with good credit.

LightStream has an easy online application process, and provides a quick response during business hours. This is a confidential process between you and LightStream. For more information or to apply:

<https://www.lightstream.com/?fact=14755&irad=391622&irmp=3040226>

(Please note, we may receive a referral fee from LightStream through this link.)

ALL INVENTORY IS STORED INDOORS AND SHOWN BY APPOINTMENT. Trades accepted. Extended warranties available. All applicable sales tax, title, registration and a \$299 document fees apply.

Also check us out at:

http://www.instagram.com/nolan_premierautosource

<https://www.facebook.com/premierautosource/>

<http://youtube.com/premierautosource/>

#PREMIERAUTOSOURCE

#PREMIERJEEPSOURCE

Our Location :



2021 Jeep Gladiator Sport S Diesel

Premier Automotive Source LLC - - View this car on our website at premierautomotivesource.com/6996522/ebrochure

Installed Options

Interior

- 6-Way Driver Seat -inc: Manual Recline, Height Adjustment, Fore/Aft Movement and Manual Lumbar Support
- Cloth Low-Back Bucket Seats
- Front Seats w/Cloth Back Material and Manual Driver Lumbar
- Full Carpet Floor Covering -inc: Carpet Front And Rear Floor Mats
- Gauges -inc: Speedometer, Odometer, Engine Coolant Temp, Tachometer, Engine Hour Meter, Trip Odometer and Trip Computer
- Manual Air Conditioning- Proximity Key For Push Button Start Only - Trip Computer
- 110 mph Vehicle Max Speed Calibration- 2 12V DC Power Outlets
- 2 Seatback Storage Pockets
- 4-Way Passenger Seat -inc: Manual Recline and Fore/Aft Movement
- 60-40 Folding Split-Bench Front Facing Fold Forward Seatback Cloth Rear Seat
- Air Filtration- Analog Appearance- Compass- Cruise Control w/Steering Wheel Controls
- Day-Night Rearview Mirror- Delayed Accessory Power- Fade-To-Off Interior Lighting
- Front And Rear Map Lights- Front Center Armrest w/Storage
- Full Floor Console w/Locking Storage and 2 12V DC Power Outlets
- HVAC -inc: Console Ducts- Illuminated Front Cupholder- Illuminated Rear Cupholder
- Instrument Panel Bin, Dashboard Storage, Driver / Passenger And Rear Door Bins
- Interior Trim -inc: Metal-Look Instrument Panel Insert and Metal-Look Console Insert
- Locking Glove Box
- Manual Adjustable Front Head Restraints and Foldable Rear Head Restraints
- Manual Tilt/Telescoping Steering Column- Outside Temp Gauge
- Redundant Digital Speedometer- Sentry Key Engine Immobilizer- Systems Monitor
- Urethane Gear Shifter Material- Vanity w/Driver And Passenger Auxiliary Mirror

Exterior

- Black Front Bumper w/2 Tow Hooks- Black Rear Bumper w/1 Tow Hook
- Front Fog Lamps- Manual Convertible Top w/Fixed Roll-Over Protection

Option Packages

Factory Installed Packages

ENGINE: 3.0L V6 TURBO DIESEL W/ESS G3

- inc: ABS 4-Wheel HD Disc Brakes w/Front FNC, Selective Catalytic Reduction (Urea), Non-Lock Fuel Cap w/Discriminator, Gray EcoDiesel Badge, Supplemental Heater, Tires: 245/75R17 BSW A/T Dueler, Stop-Start Dual Battery System, GVWR: 6,350 lbs, Auxiliary Battery, Anti-Spin Differential Rear Axle, 19 Gallon Fuel Tank

TRANSMISSION: 8-SPEED AUTOMATIC (8HP75)

- inc: Tip Start, Transmission Skid Plate, Select-Speed Control

BLACK 3-PIECE HARD TOP

- inc: Freedom Panel Storage Bag, Rear Window Defroster, Rear Sliding Window

POPULAR EQUIPMENT PACKAGE

- inc: Convenience Group, Universal Garage Door Opener, Trailer Tow Package, Trailer Hitch Zoom, Class IV Hitch Receiver, Heavy Duty Engine Cooling, 240 Amp Alternator, Black 3-Piece Hard Top, Freedom Panel Storage Bag, Rear Window Defroster, Rear Sliding Window, Technology Group, Google Android Auto, Selectable Tire Fill Alert, SiriusXM Satellite Radio, SiriusXM Radio Service, For More Info, Call 800-643-2112, GPS Antenna Input, USB Host Flip, Cluster 7.0" TFT Color Display, Integrated Center Stack Radio. 7.0" Touch

- Wheels: 17" x 7.5" Black Steel Styled - Aero-Composite Halogen Headlamps w/Delay-Off
- Black Door Handles- Black Side Windows Trim- Body-Colored Grille- Clearcoat Paint
- Deep Tint Sunscreen Windows- Full-Size Spare Tire Stored Underbody w/Crankdown
- Galvanized Steel/Aluminum Panels- Regular Box Style- Removable Rear Window
- Steel Spare Wheel- Tailgate Rear Cargo Access- Tires: 245/75R17 H/T
- Variable Intermittent Wipers

Safety

- 6-Way Driver Seat -inc: Manual Recline, Height Adjustment, Fore/Aft Movement and Manual Lumbar Support
- Cloth Low-Back Bucket Seats
- Front Seats w/Cloth Back Material and Manual Driver Lumbar
- Full Carpet Floor Covering -inc: Carpet Front And Rear Floor Mats
- Gauges -inc: Speedometer, Odometer, Engine Coolant Temp, Tachometer, Engine Hour Meter, Trip Odometer and Trip Computer
- Manual Air Conditioning- Proximity Key For Push Button Start Only - Trip Computer
- 110 mph Vehicle Max Speed Calibration- 2 12V DC Power Outlets
- 2 Seatback Storage Pockets
- 4-Way Passenger Seat -inc: Manual Recline and Fore/Aft Movement
- 60-40 Folding Split-Bench Front Facing Fold Forward Seatback Cloth Rear Seat
- Air Filtration- Analog Appearance- Compass- Cruise Control w/Steering Wheel Controls
- Day-Night Rearview Mirror- Delayed Accessory Power- Fade-To-Off Interior Lighting
- Front And Rear Map Lights- Front Center Armrest w/Storage
- Full Floor Console w/Locking Storage and 2 12V DC Power Outlets
- HVAC -inc: Console Ducts- Illuminated Front Cupholder- Illuminated Rear Cupholder
- Instrument Panel Bin, Dashboard Storage, Driver / Passenger And Rear Door Bins
- Interior Trim -inc: Metal-Look Instrument Panel Insert and Metal-Look Console Insert
- Locking Glove Box
- Manual Adjustable Front Head Restraints and Foldable Rear Head Restraints
- Manual Tilt/Telescoping Steering Column- Outside Temp Gauge
- Redundant Digital Speedometer- Sentry Key Engine Immobilizer- Systems Monitor
- Urethane Gear Shifter Material- Vanity w/Driver And Passenger Auxiliary Mirror

Mechanical

- Anti-Lock 4-Wheel Disc Heavy Duty Brakes
- Brakes w/Front And Rear Vented Discs, Brake Assist and Hill Hold Control
- Class II Towing Equipment -inc: Hitch and Trailer Sway Control
- Engine: 3.6L V6 24V VVT UPG I w/ESS - Transmission: 6-Speed Manual
- 1700# Maximum Payload- 180 Amp Alternator- 22 Gal. Fuel Tank- 3 Skid Plates
- 3.73 Rear Axle Ratio- 50 State Emissions
- 650CCA Maintenance-Free Battery w/Run Down Protection- Auto Locking Hubs
- Brake Actuated Limited Slip Differential - Electro-Hydraulic Power Assist Steering
- Engine Auto Stop-Start Feature- Engine Oil Cooler- Front And Rear Anti-Roll Bars
- GVWR: 5,800 lbs- HD Shock Absorbers- Leading Link Front Suspension w/Coil Springs
- Manual Transfer Case- Normal Duty Plus Suspension- Part-Time Four-Wheel Drive
- Single Stainless Steel Exhaust- Trailer Wiring Harness
- Trailing Arm Rear Suspension w/Coil Springs

Screen Display, Air Conditioning w/Auto Temp Control, Apple CarPlay

TRAILER TOW PACKAGE

-inc: Trailer Hitch Zoom, Class IV Hitch Receiver, Heavy Duty Engine Cooling, 240 Amp Alternator **\$495**

3.73 REAR AXLE RATIO

QUICK ORDER PACKAGE 26S SPORT S

-inc: Engine: 3.0L V6 Turbo Diesel w/ESS G3, Transmission: 8-Speed Automatic (8HP75), Tires: 245/75R17 BSW All-Terrain, Speed Sensitive Power Locks, Automatic Headlamps, Leather Wrapped Steering Wheel, Molded in Color Bumper w/Accent Color, Body Color Fender Flares (2-Piece), Front 1-Touch Down Power Windows, Sport S, Power Heated Mirrors, Daytime Running Lamp System, Security Alarm, Power Tailgate Lock, Remote Keyless Entry, Sun Visors w/Illuminated Vanity Mirrors **\$3,400**

STING-GRAY CLEARCOAT

\$245

Option Packages Total

\$13,280

DEALER POLICIES: Please review all photos carefully and ask questions prior to making an offer if there is anything you are not sure about. We welcome pre-sale inspections. Any descriptions we make of vehicles shall not be construed as any type of warranty. Our pictures are as thorough and precise as we can make them. Please be advised that this is not a brand new vehicle. It is a pre-owned vehicle and has previously been driven, so therefore with respect to the miles there will most likely be average wear and tear, such as minor scratches, minor dings, or small rock chips. We do our best to disclose any substantial blemishes in our photos and descriptions. If our vehicles include manuals, service records or extra sets of keys, it will be shown in the pictures and noted in the description. The advertised mileage is a round number and may vary slightly from the exact mileage due to demo and test drives. Once a vehicle leaves our premises, no refunds, credits, or adjustments, will be issued. All Vehicles are conveyed AS-IS. Dealer neither makes nor implies any warranty on this or any vehicle. Any dispute that may arise shall take place under the laws of the state of Florida, in the state of Florida and all sales are subject to binding Arbitration under the rules of the American Arbitration Association. All applicable sales tax, tag and title fees apply. When we receive a vehicle into our inventory, sometimes the title is being held by a bank or lender as collateral for the previous loan or payoff. Occasionally there is a delay in receiving the title from these lending institutions after payoff of the loan for up to two weeks. While we usually have the titles in our possession, there are instances where we may be waiting for the title to arrive. We guarantee clean titles on our vehicles unless otherwise noted. In some cases we may hold titles until cashiers checks or other funds are cleared or unless other arrangements were agreed upon. Titles will be sent via Fedex for proper tracking. Thank you for your patience and understanding.

Premier Automotive Source LLC

premierautomotivesource.com

3075 Leon Rd

Jacksonville , FL 32246

