

2021 Jeep Wrangler Unlimited Rubicon 4X4 DUPONT KEVLAR,LIFTED,LED'S

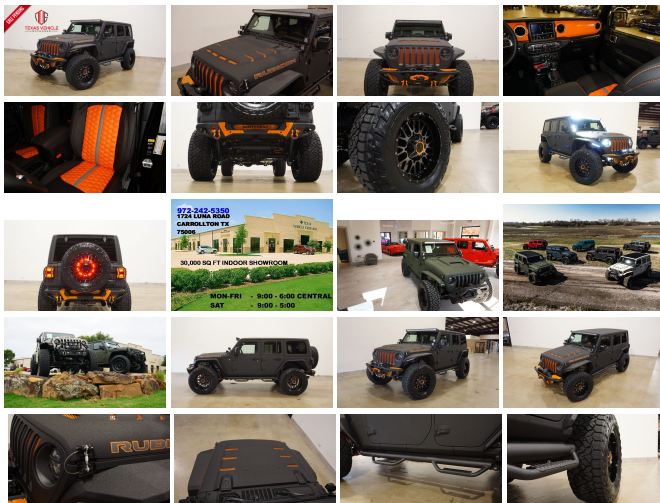
View this car on our website at tveauto.com/6994324/ebrochure



Our Price **\$90,900**

Specifications:

Year:	2021
VIN:	1C4HJXFG4MW748699
Make:	Jeep
Stock:	748699
Model/Trim:	Wrangler Unlimited Rubicon 4X4 DUPONT KEVLAR,LIFTED,LED'S
Condition:	Pre-Owned
Body:	SUV
Exterior:	Black
Engine:	ENGINE: 3.6L V6 24V VVT ETORQUE UPG I
Interior:	Black Leather
Transmission:	TRANSMISSION: 8-SPEED AUTOMATIC (850RE)
Mileage:	75
Drivetrain:	4 Wheel Drive
Economy:	City 17 / Highway 23



NATION WIDE FINANCING

SUBMIT CREDIT APP [WWW.TVEAUTO.COM](https://www.tveauto.com)

OR CALL 972-242-5350

"RAPTOR BLACK EDITION"

CUSTOM BUILT **KEVLAR** 2021 JEEP
WRANGLER JL UNLIMITED RUBICON 4X4
WITH 25R PACKAGE

UPGRADES INCLUDE:

- * RAPTOR BLACK KEVLAR COATING WITH ORANGE ACCENTS
- * CUSTOM ALEA BLACK & ORANGE LEATHER WITH ORANGE STITCHING
- * HEATED FRONT SEATS
- * REMOTE PROXIMITY KEYLESS ENTRY
- * SAFETY GROUP
- * FACTORY 8.4 INCH TOUCH SCREEN NAVIGATION WITH HD AM/FM/SIRIUS STEREO & ALPINE PREMIUM AUDIO SYSTEM
- * FACTORY BACK-UP CAMERA
- * U-CONNECT
- * SMITTYBILT APOLLO JL FRONT BUMPER WITH 2 MINI LED LIGHT BARS & LED FOGLIGHTS
- * FRONT D-RINGS & ISOLATORS (ORANGE)
- * SMITTYBILT NEW GEN II "X20" 10,000 LB WATERPROOF AND WIRELESS CONTROL WINCH WITH SYNTHETIC ROPE
- * FACTOR 55 PROLINK (BLACK)
- * FACTORY MESH GRILLE PAINTED (ORANGE)
- * FACTORY LED HEADLIGHTS
- * RUGGED RIDGE BLACK HEADLIGHT GUARDS
- * NEW RK SPORT RAM AIR VENTED HOOD
- * DRAKE OFF ROAD HOOD LATCHES
- * ROAD ARMOR STEALTH JL FENDER FLARES
- * DV8 OFF ROAD FRONT & REAR INNER FENDERS
- * RUBICON EXPRESS 2.5" LIFT KIT WITH TERAFLEX FALCON SHOCKS
- * TERAFLEX FALCON STABILIZER KIT

- * SUSPENSION PARTS PAINTED (ORANGE)
- * VOSWITCH 6 CHANNEL CUSTOM INTEGRATED SWITCH PANEL
- * 50" LED LIGHT BAR AND 4 RIGID INDUSTRIES DUALY D2 LED PILLAR LIGHTS
- * SMITTYBILT BLACK TUBULAR STEPS
- * EVOLUTION 2 BLACK LED TAIL LIGHTS
- * RUGGED RIDGE BLACK TAIL LIGHT GUARDS
- * RUGGED RIDGE SPARTACUS HD HINGE KIT
- * RUGGED RIDGE LED THIRD BRAKE LIGHT RING
- * SMITTYBILT APOLLO JL REAR BUMPER WITH REAR PARK DISTANCE SENSORS
- * REAR D-RINGS & ISOLATORS (ORANGE)
- * MAGNAFLOW BLACK SERIES EXHAUST SYSTEM
- * ALL WEATHER FLOOR MATS
- * TAZER JL PROGRAMMER WITH SPEEDOMETER CALIBRATION
- * 20" KMC "XD842 SNARE" WHEELS
- * BRAND NEW NITTO RECON GRAPPLER A/T 37X13.50R/20 TIRES

WE BUILD EVERY JEEP WITH PRIDE! DO NOT HESITATE TO CALL US WITH THIS JEEP BUILD. WE CAN MAKE CHANGES TO THIS JEEP BUILD OR CUSTOM BUILD ANY JEEP TO YOUR PREFERENCE. GIVE US A CALL @ 972-242-5350 OR STOP BY FOR A TEST DRIVE. 1724 LUNA RD IN CARROLLTON - 2 MILES NORTH OF 635.

Our Location :



2021 Jeep Wrangler Unlimited Rubicon 4X4 DUPONT KEVLAR,LIFTED,LED'S
 Texas Vehicle Exchange - 972-242-5350 - View this car on our website at veauto.com/6994324/ebrochure

Installed Options

Interior

- 6-Way Driver Seat -inc: Manual Recline, Height Adjustment, Fore/Aft Movement and Manual Lumbar Support
- Front Seats w/Cloth Back Material and Manual Driver Lumbar
- Full Carpet Floor Covering -inc: Carpet Front And Rear Floor Mats
- Gauges -inc: Speedometer, Odometer, Voltmeter, Oil Pressure, Engine Coolant Temp, Tachometer, Engine Hour Meter, Trip Odometer and Trip Computer
- Power 1st Row Windows w/Driver And Passenger 1-Touch Down
- Power Door Locks w/Autolock Feature
- Power Rear Windows and Removable 3rd Row Windows
- Premium Cloth Low-Back Bucket Seats- Proximity Key For Push Button Start Only
- Remote Keyless Entry w/Integrated Key Transmitter, Illuminated Entry and Panic Button
- Trip Computer- 2 12V DC Power Outlets
- 2 12V DC Power Outlets and 1 120V AC Power Outlet - 2 Seatback Storage Pockets
- 4-Way Passenger Seat -inc: Manual Recline and Fore/Aft Movement
- 60-40 Folding Split-Bench Front Facing Fold Forward Seatback Premium Cloth Rear Seat
- Air Filtration- Analog Appearance- Cargo Space Lights
- Carpet Floor Trim, Carpet And Rubber Mat- Compass
- Cruise Control w/Steering Wheel Controls- Day-Night Rearview Mirror
- Delayed Accessory Power
- Driver And Passenger Visor Vanity Mirrors w/Driver And Passenger Illumination
- Fade-To-Off Interior Lighting- Front And Rear Map Lights
- Front Center Armrest w/Storage
- Full Floor Console w/Locking Storage, 2 12V DC Power Outlets and 1 120V AC Power Outlet
- Garage Door Transmitter- HVAC -inc: Console Ducts- Illuminated Front Cupholder
- Illuminated Rear Cupholder
- Instrument Panel Bin, Dashboard Storage, Driver / Passenger And Rear Door Bins
- Interior Trim -inc: Colored Instrument Panel Insert, Metal-Look Door Panel Insert, Metal-Look Console Insert and Metal-Look Interior Accents

Option Packages

Factory Installed Packages

ENGINE: 3.6L V6 24V VVT ETORQUE UPG I -inc: 600 Amp Maintenance Free Battery, 48V Belt Starter Generator, Delete Alternator, Engine Oil Cooler	\$750
TRANSMISSION: 8-SPEED AUTOMATIC (850RE)	\$2,500
8.4" RADIO & PREMIUM AUDIO GROUP -inc: Off-Road Info Pages, SiriusXM Traffic Plus, Alpine Premium Audio System, HD Radio, Radio: Uconnect 4C Nav w/8.4" Display, For Details, Visit DriveUconnect.com, Rear View Auto Dim Mirror, 1-Year SiriusXM Guardian Trial, 5-Year SiriusXM Travel Link Service, GPS Navigation, 5-Year SiriusXM Traffic Service, SiriusXM Travel Link, 4G LTE Wi-Fi Hot Spot, Emergency/Assistance Call, 8.4" Touchscreen Display	\$1,995
BLACK 3-PIECE HARD TOP -inc: Freedom Panel Storage Bag, Rear Window Defroster, Rear Window Wiper/Washer, No Soft Top	\$1,545
REMOTE PROXIMITY KEYLESS ENTRY	\$645
SAFETY GROUP	

- Leather Steering Wheel- Locking Cargo Area Concealed Storage- Locking Glove Box
- Manual Adjustable Front Head Restraints and Foldable Rear Head Restraints
- Manual Tilt/Telescoping Steering Column- Outside Temp Gauge- Perimeter Alarm
- Redundant Digital Speedometer- Sentry Key Engine Immobilizer
- Smart Device Integration- Systems Monitor- Urethane Gear Shifter Material
- Voice Activated Dual Zone Front Automatic Air Conditioning

Exterior

- Auto On/Off Aero-Composite Halogen Daytime Running Headlamps w/Delay-Off
- Black Front Bumper w/2 Tow Hooks- Black Power Heated Side Mirrors w/Manual Folding
- Black Rear Bumper w/1 Tow Hook- Front Fog Lamps
- Manual Convertible Top w/Fixed Roll-Over Protection
- Tailgate/Rear Door Lock Included w/Power Door Locks
- Tires: LT285/70R17C BSW Off-Road- Wheels: 17" x 7.5" Machined w/Black Pockets
- Aluminum Spare Wheel- Black Door Handles- Black Side Windows Trim
- Black Wheel Well Trim and Black Fender Flares- Body-Color Grille w/Colored Accents
- Clearcoat Paint w/Badging- Conventional Rear Cargo Access- Deep Tinted Glass
- Full-Size Spare Tire Mounted Outside Rear
- Galvanized Steel/Aluminum/Magnesium Panels- Non-Lock Fuel Cap w/o Discriminator
- Removable Rear Window- Variable Intermittent Wipers

Safety

- 6-Way Driver Seat -inc: Manual Recline, Height Adjustment, Fore/Aft Movement and Manual Lumbar Support
- Front Seats w/Cloth Back Material and Manual Driver Lumbar
- Full Carpet Floor Covering -inc: Carpet Front And Rear Floor Mats
- Gauges -inc: Speedometer, Odometer, Voltmeter, Oil Pressure, Engine Coolant Temp, Tachometer, Engine Hour Meter, Trip Odometer and Trip Computer
- Power 1st Row Windows w/Driver And Passenger 1-Touch Down
- Power Door Locks w/Autolock Feature
- Power Rear Windows and Removable 3rd Row Windows
- Premium Cloth Low-Back Bucket Seats- Proximity Key For Push Button Start Only
- Remote Keyless Entry w/Integrated Key Transmitter, Illuminated Entry and Panic Button
- Trip Computer- 2 12V DC Power Outlets
- 2 12V DC Power Outlets and 1 120V AC Power Outlet - 2 Seatback Storage Pockets
- 4-Way Passenger Seat -inc: Manual Recline and Fore/Aft Movement
- 60-40 Folding Split-Bench Front Facing Fold Forward Seatback Premium Cloth Rear Seat
- Air Filtration- Analog Appearance- Cargo Space Lights
- Carpet Floor Trim, Carpet And Rubber Mat- Compass
- Cruise Control w/Steering Wheel Controls- Day-Night Rearview Mirror
- Delayed Accessory Power
- Driver And Passenger Visor Vanity Mirrors w/Driver And Passenger Illumination
- Fade-To-Off Interior Lighting- Front And Rear Map Lights
- Front Center Armrest w/Storage
- Full Floor Console w/Locking Storage, 2 12V DC Power Outlets and 1 120V AC Power Outlet
- Garage Door Transmitter- HVAC -inc: Console Ducts- Illuminated Front Cupholder
- Illuminated Rear Cupholder
- Instrument Panel Bin, Dashboard Storage, Driver / Passenger And Rear Door Bins
- Interior Trim -inc: Colored Instrument Panel Insert, Metal-Look Door Panel Insert, Metal-Look Console Insert and Metal-Look Interior Accents
- Leather Steering Wheel- Locking Cargo Area Concealed Storage- Locking Glove Box
- Manual Adjustable Front Head Restraints and Foldable Rear Head Restraints
- Manual Tilt/Telescoping Steering Column- Outside Temp Gauge- Perimeter Alarm
- Redundant Digital Speedometer- Sentry Key Engine Immobilizer
- Smart Device Integration- Systems Monitor- Urethane Gear Shifter Material
- Voice Activated Dual Zone Front Automatic Air Conditioning

Mechanical

- 4-Wheel Disc Brakes w/4-Wheel ABS, Front Vented Discs, Brake Assist and Hill Hold Control
- Brake Actuated Limited Slip Differential- Driver Selectable Front Locking Differential
- Driver Selectable Rear Locking Differential- Engine: 3.6L V6 24V VVT UPG I w/ESS
- Transmission: 6-Speed Manual- 1351# Maximum Payload- 21.5 Gal. Fuel Tank
- 220 Amp Alternator- 4.10 Rear Axle Ratio- 5 Skid Plates- 50 State Emissions
- 650CCA Maintenance-Free Battery w/Run Down Protection- Auto Locking Hubs
- Aux Battery- Electro-Hydraulic Power Assist Steering- Engine Oil Cooler
- Front Active w/Driver Control Anti-Roll Bar and Rear Anti-Roll Bar- GVWR: 5,800 lbs
- HD Shock Absorbers- Leading Link Front Suspension w/Coil Springs
- Manual Transfer Case- Part-Time Four-Wheel Drive- Performance Suspension
- Single Stainless Steel Exhaust- Stop-Start Dual Battery System

-inc: ParkSense Rear Park Assist System, Blind Spot & Cross Path Detection

\$995

QUICK ORDER PACKAGE 25R

-inc: Engine: 3.6L V6 24V VVT eTorque UPG I, Transmission: 8-Speed Automatic (850RE)

Option Packages Total

\$8,430

- Single Stainless Steel Exhaust- Stop Start Dual Battery System
 - Towing Equipment -inc: Trailer Sway Control
 - Trailing Arm Rear Suspension w/Coil Springs
-

Texas Vehicle Exchange

tveauto.com

972-242-5350

1724 Luna Road

Carrollton, TX 75006

© 2024 AutoRevo - All rights reserved. - Powered by [AutoRevo](#)