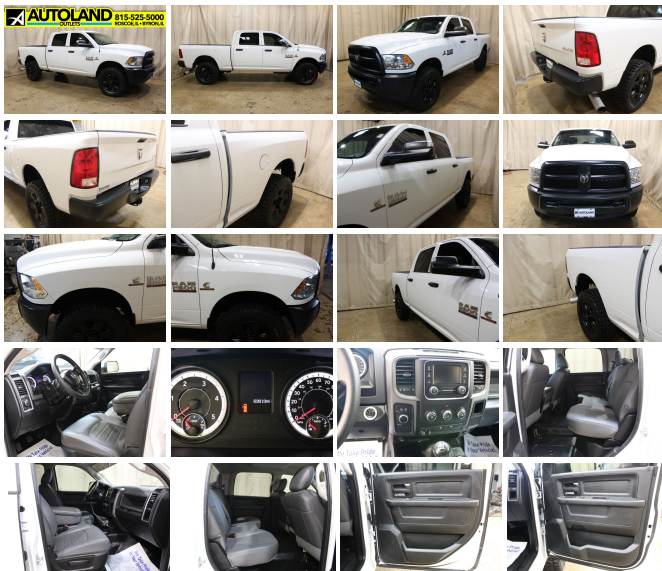


## 2018 Ram 2500 Tradesman 4x4 Diesel Manual

View this car on our website at [autolandoutlets.com/6993498/ebrochure](http://autolandoutlets.com/6993498/ebrochure)



Our Price **\$54,746**

### Specifications:

Year:	2018
VIN:	3C6UR5CL8JG389467
Make:	Ram
Stock:	10884
Model/Trim:	2500 Tradesman 4x4 Diesel Manual
Condition:	Pre-Owned
Body:	Pickup Truck
Exterior:	Bright White Clearcoat
Engine:	ENGINE: 6.7L I6 CUMMINS TURBO DIESEL
Interior:	Gray Vinyl
Transmission:	TRANSMISSION: 6-SPEED MANUAL (G56)
Mileage:	63,913
Drivetrain:	4 Wheel Drive

Just arrived!! Vehicle has been detailed and inspected runs and drives great!! Autoland Outlets is proud to offer this 2018 Dodge Ram 2500 Tradesman 4x4 Diesel 6 speed manual. Options include Electronic shift on the fly, Protection Group, Manual trans, Diesel Exhaust Brake the list

Exact date the lot goes on and on call Autoland Outlets at 1-815-525-5000 let a friendly team member tell you all about stock number 10884.

Many of our trucks are Rust Free Southern Units!!! We Buy-Sell-Trade call us for Availability and Pricing 815-525-5000. Dealer shall in no way be held liable for any errors or omissions to be found on these webpages. All prices are plus any applicable state taxes and service fees. We will do our best to keep all the information current and accurate, however the dealership should be contacted for final pricing and availability. Autoland Outlets is the midwest Premier Truck Store. Over 250 Trucks in Stock!! Over 150 are Diesels! 3/4 Tons, 1 Tons, Regular, Extended and Crew Cabs. Plus: Dump Trucks, Utility Trucks, and much more! Many New Trucks Arriving Daily!!! Thousands of Satisfied Customers! Over 25 Years in Business. Updated Daily 888-240-8674 ILLINOIS WARRANTY MAY APPLY CALL DEALERSHIP

FOR DETAILS

2018 Ram 2500 Tradesman 4x4 Diesel Manual

Autoland Outlets - 877-319-6060 - View this car on our website at [autolandoutlets.com/6993498/ebrochure](http://autolandoutlets.com/6993498/ebrochure)

#### Our Location :



## Installed Options

### Interior

- 2 12V DC Power Outlets- 40/20/40 Split Bench Seat- Analog Appearance
- Cargo Area Concealed Storage- Cruise Control w/Steering Wheel Controls
- Day-Night Auto-Dimming Rearview Mirror- Delayed Accessory Power- Driver Seat
- Electronically Controlled Throttle- Fade-To-Off Interior Lighting- Front Center Armrest
- Front Cupholder- Full Cloth Headliner- Full Vinyl/Rubber Floor Covering
- Gauges -inc: Speedometer, Odometer, Voltmeter, Oil Pressure, Engine Coolant Temp, Tachometer, Oil Temperature, Transmission Fluid Temp, Engine Hour Meter and Trip Odometer
- Glove Box- HVAC -inc: Underseat Ducts and Console Ducts
- Heavy Duty Vinyl 40/20/40 Split Bench Seat
- Instrument Panel Bin, Dashboard Storage, Driver / Passenger And Rear Door Bins and 2nd Row Underseat Storage
- Interior Trim -inc: Metal-Look Instrument Panel Insert and Chrome/Metal-Look Interior Accents
- Locking Tailgate- Manual Adjust Seats
- Manual Adjustable Front Head Restraints and Manual Adjustable Rear Head Restraints
- Manual Air Conditioning- Manual Tilt Steering Column
- Partial Floor Console w/Storage and 2 12V DC Power Outlets- Passenger Seat
- Pickup Cargo Box Lights
- Power 1st Row Windows w/Driver And Passenger 1-Touch Up/Down - Power Door Locks
- Power Rear Windows- Rear Folding Seat- Seats w/Vinyl Back Material
- Sentry Key Engine Immobilizer- Systems Monitor- Urethane Gear Shifter Material
- Vinyl Rear Seat

### Exterior

- Auto On/Off Aero-Composite Halogen Headlamps w/Delay-Off - Black Door Handles
- Black Exterior Mirrors- Black Front Bumper- Black Grille- Black Rear Step Bumper
- Black Side Windows Trim and Black Front Windshield Trim
- Cargo Lamp w/High Mount Stop Light- Center Hub- Clearcoat Paint- Deep Tinted Glass
- Exterior Mirrors w/Heating Element- Fixed Rear Window- Front License Plate Bracket
- Full-Size Spare Tire Stored Underbody w/Crankdown- Fully Galvanized Steel Panels
- Hemi Badge- Next Generation Engine Controller- Power Side Mirrors w/Manual Folding
- Regular Box Style- Steel Spare Wheel- Tailgate Rear Cargo Access
- Tires: LT245/70R17E BSW AS- Variable Intermittent Wipers
- Vendor Painted Cargo Box Tracking- Wheels: 17" x 7.5" Steel Styled

### Safety

- 2 12V DC Power Outlets- 40/20/40 Split Bench Seat- Analog Appearance
- Cargo Area Concealed Storage- Cruise Control w/Steering Wheel Controls
- Day-Night Auto-Dimming Rearview Mirror- Delayed Accessory Power- Driver Seat
- Electronically Controlled Throttle- Fade-To-Off Interior Lighting- Front Center Armrest
- Front Cupholder- Full Cloth Headliner- Full Vinyl/Rubber Floor Covering
- Gauges -inc: Speedometer, Odometer, Voltmeter, Oil Pressure, Engine Coolant Temp, Tachometer, Oil Temperature, Transmission Fluid Temp, Engine Hour Meter and Trip Odometer
- Glove Box- HVAC -inc: Underseat Ducts and Console Ducts
- Heavy Duty Vinyl 40/20/40 Split Bench Seat
- Instrument Panel Bin, Dashboard Storage, Driver / Passenger And Rear Door Bins and 2nd Row Underseat Storage
- Interior Trim -inc: Metal-Look Instrument Panel Insert and Chrome/Metal-Look Interior Accents
- Locking Tailgate- Manual Adjust Seats
- Manual Adjustable Front Head Restraints and Manual Adjustable Rear Head Restraints
- Manual Air Conditioning- Manual Tilt Steering Column
- Partial Floor Console w/Storage and 2 12V DC Power Outlets- Passenger Seat
- Pickup Cargo Box Lights
- Power 1st Row Windows w/Driver And Passenger 1-Touch Up/Down - Power Door Locks
- Power Rear Windows- Rear Folding Seat- Seats w/Vinyl Back Material
- Sentry Key Engine Immobilizer- Systems Monitor- Urethane Gear Shifter Material
- Vinyl Rear Seat

### Mechanical

- 160 Amp Alternator- 2370# Maximum Payload- 3.73 Axle Ratio- 31 Gal. Fuel Tank

- 4-Wheel Disc Brakes w/4-Wheel ABS, Front And Rear Vented Discs, Brake Assist and Hill Hold Control
- 50 State Emissions- 730CCA Maintenance-Free Battery w/Run Down Protection
- Auto Locking Hubs- Class V Towing Equipment -inc: Hitch and Trailer Sway Control
- Engine: 5.7L V8 HEMI VVT- Front Anti-Roll Bar- GVWR: 9,000 lbs- HD Shock Absorbers
- HD Suspension- Hydraulic Power-Assist Steering- Manual Transfer Case
- Multi-Link Front Suspension w/Coil Springs- Multi-Link Rear Suspension w/Coil Springs
- Part-Time Four-Wheel Drive- Single Stainless Steel Exhaust- Tip Start
- Trailer Wiring Harness
- Transmission w/Driver Selectable Mode, Sequential Shift Control and Oil Cooler
- Transmission: 6-Speed Automatic (66RFE)

## Option Packages

### Factory Installed Packages

#### ENGINE: 6.7L I6 CUMMINS TURBO DIESEL

-inc: Selective Catalytic Reduction (Urea), 180 Amp Alternator, Cummins Turbo Diesel Badge, Tow Hooks, Current Generation Engine Controller, Diesel Exhaust Brake, GVWR: 10,000 lbs, RAM Active Air **\$9,300**

#### TRANSMISSION: 6-SPEED MANUAL (G56)

-inc: 3.42 Axle Ratio, Mini Floor Console

#### 3.42 AXLE RATIO

#### QUICK ORDER PACKAGE 2EA TRADESMAN

-inc: Engine: 6.7L I6 Cummins Turbo Diesel, Transmission: 6-Speed Manual (G56)

#### BRIGHT WHITE CLEARCOAT

#### DIESEL GRAY/BLACK, HEAVY DUTY VINYL 40/20/40 SPLIT BENCH SEAT

Option Packages Total **\$9,300**

Autoland Outlets  
[autolandoutlets.com](http://autolandoutlets.com)  
 877-319-6060  
 13156 Love Rd  
 Roscoe, IL 61073

© 2021 AutoRevo - All rights reserved. - Powered by AutoRevo