

2002 Harley-Davidson Roadking Classic FLHRCI

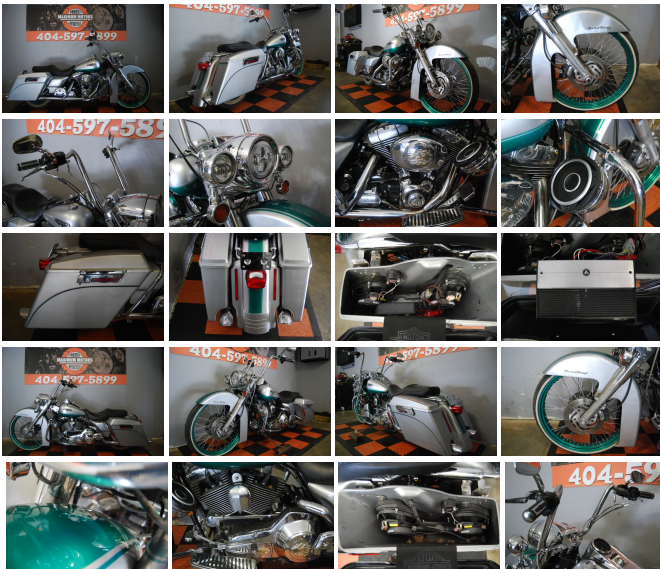
View this car on our website at maximummotors.net/6989067/ebrochure



Our Price **\$7,500**

Specifications:

Year: 2002
VIN: 1HD1FRW142Y605388
Make: Harley-Davidson
Stock: AR067-21
Model/Trim: Roadking Classic FLHRCI
Condition: Pre-Owned
Engine: 0 cc
Exterior: Silver
Mileage: 27,237



Welcome to Maximum Motors your #1 Source For project Harleys. Maximum Motors is a licensed bonded Vehicle dealer established in 2001. If you are looking at one of our eBay listings please take some time to review our feedback and click on the "me" icon next to our feedback for more info about us and to view all of our inventory. We've sold hundreds of bikes on eBay Motors over the past years and as you will see most of our business is long distance so you can be sure that once you've bought and paid for your bike we will work very hard getting it to you as soon as possible ! We have been selling on eBay for over 11 years and have many happy customers to prove it. We understand buying online without being able to see something in person is a major step but we hope you will give us a chance to earn your business.

Need transport ? let our network of transporters deliver your purchase to your front door with our extremely competitive rates
!!!!

***** 2002 FLHRCI ROADKING CLASSIC *****

***** THEFT-MINOR COSMETIC DAMAGE *****

***** REBUILDABLE SALVAGE TITLE *****

***** 26" FRONT WHEEL - AMERICAN SUSPENSION TREES & STRETCHED BAGS/FENDER *****

***** 6 SPEAKER SOUND SYSTEM WITH JL AUDIO AMP *****

YOUTUBE VIDEO LINK: <https://www.youtube.com/watch?v=JQhTprjcytM>

This bike was purchased from an insurance company and is being

THIS BIKE WAS PURCHASED FROM AN INSURANCE COMPANY AND IS BEING OFFERED HERE TO PASS THE SAVINGS ON TO YOU. WHEN OUR BIKES ARRIVE WE EVALUATE THEM TO DETERMINE THE EXTENT OF DAMAGE. EVERY EFFORT IS MADE TO GET THE BIKES RUNNING AND DO A LOT TEST RIDE. WE THEN TAKE 20 PLUS PHOTOS AND DO A START UP VIDEO SHOWING THE BIKE START, IDLE AND TAKEOFF. MOST OF THE BIKES WE SELL CONSIST OF EASY BOLT ON DAMAGE, IF THERE IS ANY FRAME OR DRIVETRAIN DAMAGE WE MAKE EVERY EFFORT TO LIST THAT.

Any questions feel free to email or call 404-597-5899. We understand a big part of buying online is transportation. We work really hard at getting the bikes delivered quickly and at a really good rate, We work with some really great transporters and will assist in shipping arrangements if needed, here is an example of some door to door rates based from zip code 30233

250-500 miles \$350

500-750 miles \$400

750-1000 miles \$450

over 1000 miles please call or email

***Canada -We will ship to a Warehouse close to the boarder and you would have to pickup at Warehouse \$500-\$750*

****THESE RATES APPLY TO BIKES PURCHASED FROM US ****

******** EXPORTERS WELCOME ********

******* WE CAN ASSIST IN WORLDWIDE TRANSPORT *******

******* RATES DO NOT INCLUDE ANY IMPORT TAXES OR DUTYS *******

******* Here are some sample rates to various ports *******

Felixstowe England \$1000

Liverpool England \$1150

London England \$1000

Manchester England \$1200

Glasgow Scotland \$1300

Gothenburg Sweden \$1850

Copenhagen Denmark \$1750

Aarhus Denmark \$1700

Warsaw/ Gdansk Poland \$1350

Barcelona Spain \$1250

Bilbao Spain \$1725

Madrid Spain \$1700

Madrid Spain \$1725

Valencia Spain \$1250

Rotterdam NI \$1100

Antwerp Belgium \$1200

Helsinki Finland \$1750

Paris /Lehavre/ Marseille France \$1150

Prague Czech Republic \$1250

Le Havre France \$1300

Bremerhaven Germany \$1250

Hamburg Germany \$1250

Melbourne/Sydney Australia \$1250

Adelaide Australia \$1475

Oporto Portugal \$1755

Lisbon Portugal \$1525

*Auckland New Zealand \$1600**** please email for details*

Various Middle Eastern ports \$1600-\$1800

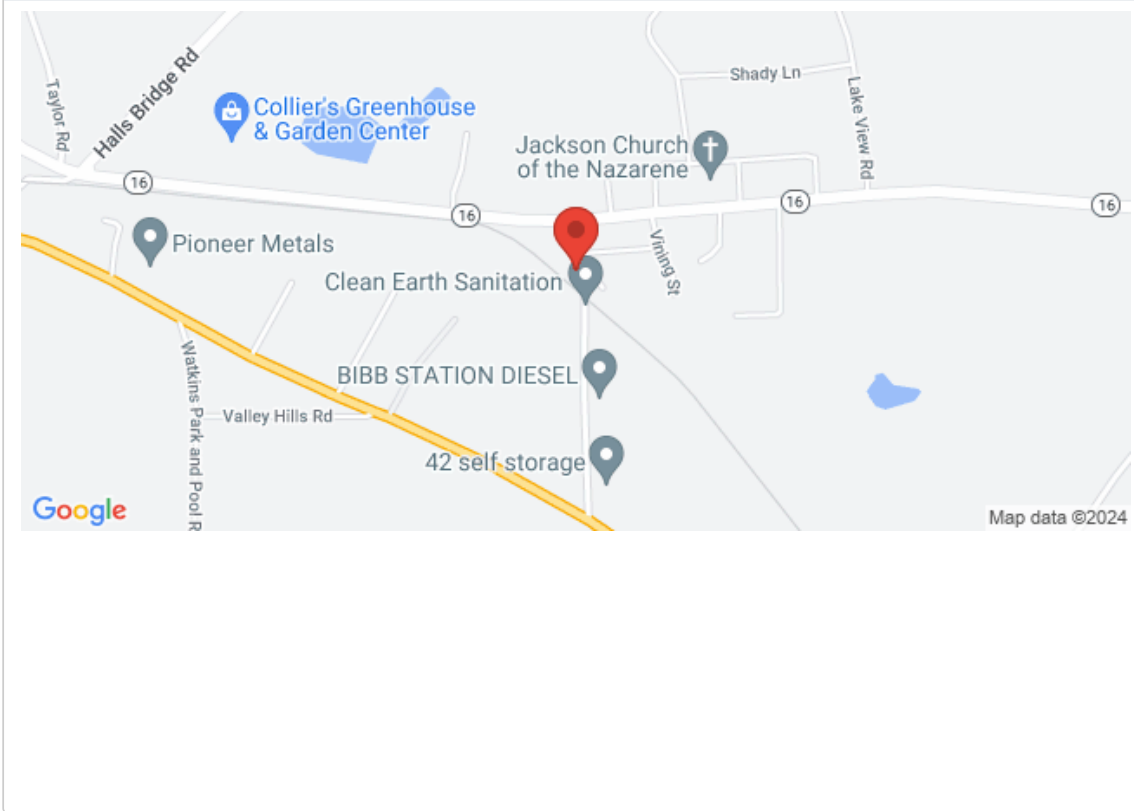
The above rates includes a \$200 crate & local delivery to Shipper

*** If your country is not listed email us and we should be able to get you a quote.*

Project motorcycles is our business and Harleys are our speciality, as Harley makes up 99% of our business we know the bikes and pass this knowledge on in our listings. We seek out the best bikes available. We always have plenty of Great project bikes in stock and buy new stock daily.

TERMS AND CONDITIONS : ALL INVENTORY IS SOLD AS IS WITH EITHER A CLEAN, SALVAGE, OR PARTS ONLY TITLE OR BILL OF SALE. IF YOU ARE SUBMITTING AN OFFER PLEASE BE READY TO PURCHASE. WE DO NOT FINANCE OR ACCEPT CREDIT CARDS. WE WILL ACCEPT A \$200 DEPOSIT VIA PAYPAL. IF THE OFFER IS THRU EBAY AND IS ACCEPTED WE REQUIRE AN IMMEDIATE \$200 PAYPAL DEPOSIT AND FULL PAYMENT VIA CERTIFIED FUNDS SUCH AS WIRE TRANSFER OR CASHIERS CHECK. PLEASE UNDERSTAND THAT CASHIERS CHECKS CAN TAKE UP TO 10 DAYS TO CLEAR.

Our Location :



2002 Harley-Davidson Roadking Classic FLHRCI

MAXIMUM MOTORS - (404) 597-5899 - View this car on our website at maximummotors.net/6989067/ebrochure

Installed Options

MAXIMUM MOTORS

maximummotors.net

(404) 597-5899

110 Bibb Station Rd

Jackson, Georgia 30233

© 2024 AutoRevo - All rights reserved. - Powered by AutoRevo