

2006 Chevrolet Corvette w/ 3LT & Z51 Performance Packages!

Website Price \$26,995

View this vehicle on our website at autoparkdallas.com



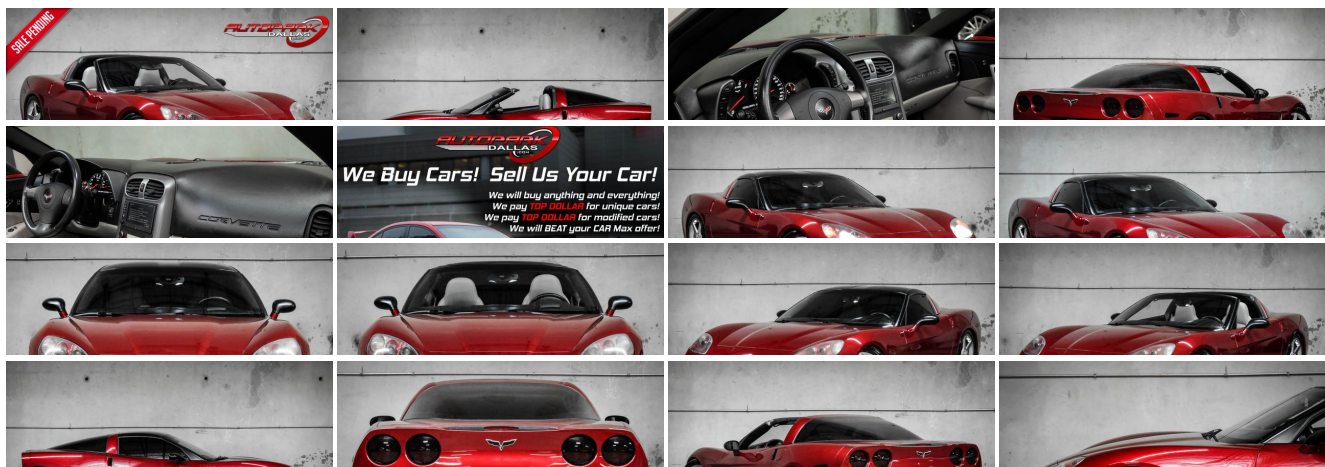
(214) 945-2601

2061 S Stemmons Fwy , Lewisville, TX 75067

Photos

Details

Contact





Specifications:

Year:	2006
VIN:	1G1YY26U965115315
Make:	Chevrolet
Model/Trim:	Corvette w/ 3LT & Z51 Performance Packages!
Condition:	Pre-Owned
Body:	Coupe
Exterior:	Monterey Red Met Tintcoat
Engine:	ENGINE, 6.0L V8 SFI
Interior:	Titanium Gray Leather
Transmission:	TRANSMISSION, 6-SPEED MANUAL, SHORT-THROW
Mileage:	63,426
Drivetrain:	Rear Wheel Drive
Economy:	City 17 / Highway 27

Vehicle Description

AutoPark Dallas is thrilled to offer you this Beautiful Monterey Red Metallic Tintcoat 2006 Chevrolet Corvette with 3LT & Z51 Performance Package for sale! These bald eagle screaming, U.S. born beauties are a thrill to drive and always stand out in any crowded car meet or parking lot! Our Corvette here APD was handled with care as the condition of this Corvette is amazing, well loaded straight from the factory, and best of all has the Z51 Performance Package to give the extra 'Need for Speed' feel! Come swing by to check out this Corvette parked in our indoor 16,000 Sq Ft Showroom located in Dallas , Texas amongst our inventory of 100+ other Performance / Modified and Luxury cars!

2006 Chevrolet Corvette

* LOW MILEAGE !*

* 3 Fobs w/ 1 Key !*

* 3LT Package !*

* Z51 Performance Package !*

* Memory Package !*

MODIFICATIONS!

Lowered on Springs

Modified Exhaust System

Gloss Black Wrapped Removable T-Top

Blacked-Out Tail Lights & Side Markers

Matte Black Side Mirrors

Windows Tinted

STOCK!

Monterey Red Metallic Tintcoat Exterior

Titanium Gray Leather Interior

Heated Driver & Passenger Seats

Digital Heads-Up Display

Navigation

Dual Climate Control

BOSE Premium Audio System

Push Button Start

Cruise Control

Daytime Running Lights

Comfort Access Keyless Entry

6.0L LS2 V8 SFI Engine

6-Speed Manual Transmission

Rear Wheel Drive

Professionally Detailed!

Well Maintained!

** Free CarFax Report !**

AND SO MUCH MORE!!!

Financing is available!

Check out our Payment Calculator to get an estimate on your monthly payments!

OR

Get pre-approved in no time by filling out a credit application on the 'Finance' section of our website!

We also offer MANY different Extended Warranty options!

Check out our Google Reviews by **Clicking** this LINK!

Referrals and Testimonials is what our business is built on!

The team here at AutoPark Dallas, is dedicated to offering a level of customer service not usually found in the automobile industry. Thanks to years of extensive car buying / selling experience, we pursue quality used and new vehicles that are hand-picked from factory sources. Our love for automobiles and dislike of traditional dealership tactics is what motivates us to provide the service we do! The pride we take in continuing this service long after the vehicle has been delivered is what we strive for! Looking forward to making every effort to see that our customer is completely satisfied and a friend for life!

Pre-purchase inspections are always welcomed!

We also offer airport pick-up, competitive financing options, free CarFax Reports, Car Shipping nationwide, Extended Warranty plans, and so much more!

Trade-In(s) are always accepted or sell us your used car (MODIFIED OR NOT)! Please call or text for more information about Trade-Ins or selling your car to us @ (214) 945-2601!

#(214) 945-2601

Call or Text *Anytime!*

Se habla Español

WE BUY CARS!

WWW.AUTOPARKDALLAS.COM

Installed Options

Interior

- Air conditioning, dual-zone, automatic, includes individual climate settings for driver and right front passenger, automatic climate control and outside temperature display
- Air filtration, includes pollen filter - Antenna, integral, hidden
- Console, floor, lockable, includes 2 covered cupholders, ashtray with cigar lighter, auxiliary power outlet and CD storage
- Cruise control, electronic with set and resume speed - Defogger, rear-window, electric
- Door locks, power, programmable, includes lockout protection- Floor mats, carpeted
- Hatch release, push button open (Includes power hatch pulldown.)
- Instrumentation, analog, electronic, includes Driver Information Center with 2 line display
- Keyless Access, with push-button start, includes 2 remote transmitters which enable automatic door unlock and open by touching door switch
- Lighting, interior, courtesy, cargo and glovebox
- Mirror, inside rearview, manual day/night, includes dual reading lights
- Oil life monitoring system- Seat adjuster, power, driver 6-way
- Seats, front bucket with leather seating surfaces, includes back angle adjustment
- Sound system, ETR AM/FM stereo with CD player and MP3 playback, includes Radio Data System, seek-and-scan, digital clock, auto-tone control, automatic volume, Theftlock and (U66) Sound system feature, 7-speaker system
- Steering column, manual, Tilt-Wheel- Steering wheel, leather-wrapped, smaller, 3-spoke
- Storage, includes lockable glovebox, center console and 2 rear compartments with covers
- Theft-deterrent system, push button start, immobilizer and audible visual alarm
- Tire Pressure Monitor System, air pressure sensors in each tire, pressure display in Driver Information Center
- Visors, illuminated vanity mirrors, driver and front passenger
- Windows, power, includes driver and passenger express-down

Exterior

- Daytime running lamps- Fog lamps, front, integral in fascia- Glass, Solar-Ray light tinted
- Headlamps, dual projector lamps, xenon high-intensity discharge low-beam, tungsten-halogen high-beam, includes automatic exterior lamp control
- Mirrors, outside rearview, power, heated, body-color
- Roof panel, removable, 1-piece, body-color- Wipers, intermittent, front

Safety

- Air conditioning, dual-zone, automatic, includes individual climate settings for driver and right front passenger, automatic climate control and outside temperature display
- Air filtration, includes pollen filter - Antenna, integral, hidden
- Console, floor, lockable, includes 2 covered cupholders, ashtray with cigar lighter, auxiliary power outlet and CD storage
- Cruise control, electronic with set and resume speed - Defogger, rear-window, electric
- Door locks, power, programmable, includes lockout protection- Floor mats, carpeted
- Hatch release, push button open (Includes power hatch pulldown.)
- Instrumentation, analog, electronic, includes Driver Information Center with 2 line display
- Keyless Access, with push-button start, includes 2 remote transmitters which enable automatic door unlock and open by touching door switch
- Lighting, interior, courtesy, cargo and glovebox
- Mirror, inside rearview, manual day/night, includes dual reading lights
- Oil life monitoring system- Seat adjuster, power, driver 6-way
- Seats, front bucket with leather seating surfaces, includes back angle adjustment
- Sound system, ETR AM/FM stereo with CD player and MP3 playback, includes Radio Data System, seek-and-scan, digital clock, auto-tone control, automatic volume, Theftlock and (U66) Sound system feature, 7-speaker system
- Steering column, manual, Tilt-Wheel- Steering wheel, leather-wrapped, smaller, 3-spoke
- Storage, includes lockable glovebox, center console and 2 rear compartments with covers
- Theft-deterrent system, push button start, immobilizer and audible visual alarm
- Tire Pressure Monitor System, air pressure sensors in each tire, pressure display in Driver Information Center

Option Packages

Factory Installed Packages

ENGINE, 6.0L V8 SFI

(400 HP [298.3 kW] @ 6000 rpm, 400 lb.-ft.
[542.8 N-m] @ 4400 rpm)

TRANSMISSION, 6-SPEED MANUAL, SHORT-THROW

(Includes (GU6) Axle, 3.42 ratio.)

AIR BAGS, FRONTAL AND SIDE IMPACT, DRIVER AND FRONT PASSENGER WITH PASSENGER SIDE SUPPRESSION

(Always use safety belts and proper child restraints, even with air bags. See the Owners Manual for more safety information.)

HEAD-UP DISPLAY

includes dot-matrix readouts for street mode, track mode with g-meter, vehicle speed, engine rpm, and readings from key gauges including water temperature and oil pressure

LICENSE PLATE BRACKET, FRONT

MEMORY PACKAGE

2 driver settings, remembers "presets" for 6-way power seat, outside mirrors and telescoping steering column

PERFORMANCE PACKAGE

performance-oriented package for the Gymkhana/Autocross enthusiast, includes power steering, engine oil and transmission coolers, stiffer springs and stabilizer bars, specific shock absorbers, larger brakes with cross-drilled rotors, specific tires and Z51-specific 6-speed manual when ordered with 6-speed manual transmission

\$1,695

SOUND SYSTEM FEATURE, XM SATELLITE RADIO

features 67 channels of 100% commercial-free music included in its over 150 channels of the best in music, news, sports, talk, comedy, XM Instant Traffic and Weather, and more. Digital quality sound with coast-to-coast signal coverage. Three trial months-no obligation.

UNIVERSAL HOME REMOTE

includes garage door opener, 3-channel programmable, located on driver visor

AXLE, 3.42 RATIO, LIMITED SLIP

EMISSIONS, FEDERAL REQUIREMENTS

PREMIUM COAT PAINT

\$750

DECEMBER EQUIPMENT GROUP

Information Center

- Visors, illuminated vanity mirrors, driver and front passenger
- Windows, power, includes driver and passenger express-down

Mechanical

- Wheels, 5-spoke silver painted aluminum, 18" x 8.5" (45.7 cm x 21.6 cm), front and 19" x 10.0" (48.3 cm x 25.4 cm), rear
- Active handling, improves traction and enhances vehicle stability
- Axle, 3.42 ratio, limited slip (Included and only available with (MN6) Transmission, 6-speed manual.)
- Brakes, 4-wheel antilock, 4-wheel disc
- Engine access, rear opening hood, includes underhood lamp
- Engine, 6.0L V8 SFI (400 HP [298.3 kW] @ 6000 rpm, 400 lb.-ft. [542.8 N-m] @ 4400 rpm)
- Exhaust, aluminized stainless-steel with polished 3" stainless-steel tips
- Fuel capacity, approximate, 18 gallon (68 liters) - Rear wheel drive
- Steering, power, speed-sensitive, rack and pinion
- Suspension, 4-wheel independent, includes transverse fiberglass leaf springs
- Tires, front P245/40ZR18, extended mobility, Eagle F1
- Tires, rear P285/35ZR19, extended mobility, Eagle F1 - Traction control, all-speed
- Transmission, 6-speed manual, short-throw (Includes (GU6) Axle, 3.42 ratio.)

PREFERRED EQUIPMENT GROUP

includes (AJ7) Air bags, frontal and side impact, driver and front passenger, Cargo convenience net, in rear compartment area, (UV6) Head-Up Display, (UG1) Universal Home Remote, (D42) Luggage shade, (AAB) Memory Package, (DD0) Mirrors, inside rearview with compass and driver outside rearview, auto-dimming, (AG2) Seat adjuster, power, front passenger 6-way, (AQ9) Seats, front Sport bucket with leather seating surfaces, (KA1) Seats, heated, driver and passenger, (US9) Sound system, ETR AM/FM stereo with 6-disc, in dash CD changer, MP3 playback, (N37) Steering column, power telescopic, includes manual tilt, (U2K) Sound system feature, XM Satellite Radio

\$4,795

SOUND SYSTEM WITH NAVIGATION, ETR AM/FM STEREO WITH CD PLAYER AND MP3 PLAYBACK, (U65) SOUND SYSTEM FEATURE, BOSE PREMIUM 7-SPEAKER SYSTEM, DVD NAVIGATION WITH GPS, 6.5" LCD COLOR DISPLAY TOUCH SCREEN, VOICE RECOGNITION

includes Radio Data System, seek-and-scan, digital clock, auto-tone control, automatic volume and TheftLock

\$1,600

HIGHWEAR NUANCE LEATHER SEAT TRIM

SEATS, FRONT SPORT BUCKET WITH LEATHER SEATING SURFACES

includes back angle adjustment, adjustable lumbar and side bolsters

WHEELS, 5-SPOKE, POLISHED ALUMINUM, 18" x 8.5" (45.7 CM x 21.6 CM), FRONT AND 19" x 10.0" (48.3 CM x 25.4 CM), REAR
\$1,295

Option Packages Total

\$10,135



Auto Park Dallas

View this car on our website at autoparkdallas.com/6986315

Website: autoparkdallas.com

Phone: (214) 945-2601

Map: 2061 S Stemmons Fwy, Lewisville, TX 75067

