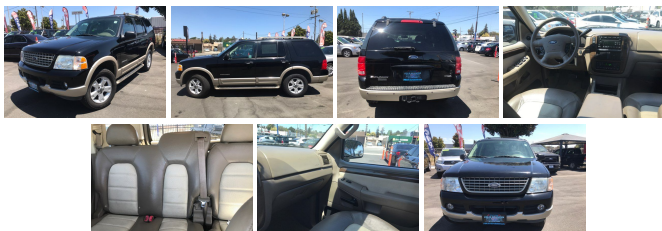


## 2005 Ford Explorer Eddie Bauer

View this car on our website at [4seasonscars.com/6984666/ebrochure](http://4seasonscars.com/6984666/ebrochure)



Our Price **\$6,580**

### Specifications:

<b>Year:</b>	2005
<b>VIN:</b>	1FMDU64E85UB43966
<b>Make:</b>	Ford
<b>Stock:</b>	FS396626
<b>Model/Trim:</b>	Explorer Eddie Bauer
<b>Condition:</b>	Pre-Owned
<b>Body:</b>	SUV
<b>Exterior:</b>	Black
<b>Engine:</b>	4.0L SOHC V6 ENGINE
<b>Interior:</b>	Tan Leather
<b>Mileage:</b>	142,319
<b>Drivetrain:</b>	Rear Wheel Drive
<b>Economy:</b>	City 16 / Highway 21

2005 Ford Explorer Eddie Bauer

Four Seasons Auto Sales - (510) 274-5646 - View this car on our website at [4seasonscars.com/6984666/ebrochure](http://4seasonscars.com/6984666/ebrochure)

## Vehicle History Report : as Of 10/28/2021

**CARFAX**

Snapshot

**2005 FORD EXPLORER EDDIE BAUER**

 No accidents or damage reported to CARFAX

 **2** Previous owners

 **26** Service history records

 Personal vehicle

 Last owned in California

 **142,326** Last reported odometer reading



**FREE CARFAX Report**

See the full CARFAX Report for additional information

\*carfax Snapshot is a reflection of available information on the date the report was pulled. carfax is constantly being updated with new information and is subject to change at any time.

## Our Location :



2005 Ford Explorer Eddie Bauer

Four Seasons Auto Sales - (510) 274-5646 - View this car on our website at [4seasonscars.com/6984666/ebrochure](https://4seasonscars.com/6984666/ebrochure)

## Installed Options

### Interior

- (2) front/rear power points- (3) grab handles- (4) color keyed coat hooks
- (4) load floor tie-down hooks- 5-passenger seating
- 60/40 split-folding 2nd row seat w/head restraints
- AM/FM stereo w/6-disc in-dash CD/MP3 player, clock-inc: 290-watt Audiophile system, 7-speakers, Sirius satellite capability
- Air conditioning w/dual zone automatic temperature control
- Auxiliary steering wheel audio/climate controls- Cargo area dome light
- Cargo management system- Center dome lamp w/1st row map lights
- Color keyed 4-spoke leather-wrapped steering wheel
- Color keyed cloth sunvisors w/illuminated visor vanity mirrors
- Color keyed front/rear carpeted floor mats
- Color keyed plastic scuff plates on all doors & liftgate - Electrochromic rearview mirror
- High-series floor console-inc: storage bin, (2) front & (2) rear cup holders, front & rear power points, coin holder, tissue/map holder, molded mat w/pencil holder, heat vents/AC registers
- Illuminated entry- Illuminated glove box- Keyless entry pad
- Leather-trimmed heated front bucket seats w/8-way driver/6-way passenger power, adjustable head restraints, power driver/manual passenger lumbar supports, 2-position driver seat memory

- Medium pecan woodgrain cordia door trim spears/instrument panel - Message center
- Outside temp display & compass
- Overhead console-inc: two map lamps, ticket clip, sunglass holder, garage door opener bin
- Pwr door locks w/cargo area lock/unlock button
- Pwr windows-inc: "one-touch-down" driver window- Rear window defroster
- Remote keyless entry-inc: 2 key fobs, 2-stage unlocking, autolock, liftgate glass release
- Securilock/immobilizer passive anti-theft system
- Speed control w/fingertip control, tap-up/tap-down feature- Tilt steering column
- Tire pressure monitoring system

## Exterior

- Automatic on/off headlamps- Black folding heated pwr mirrors w/approach lamps
- Black roof rails- Color keyed door handles- Dual intermittent rear wiper/washer
- Exterior liftgate release switch- Fog lamps
- Lower Pueblo Gold/upper body color front/rear bumpers
- One-piece liftgate w/pop-up flip glass
- Privacy glass-inc: rear door/rear quarter/liftgate glass
- Projector halogen beam reflector headlamps- Pueblo Gold lower body-side cladding
- Pueblo Gold running boards- Pueblo Gold wheel lip moldings
- Satin nickel egg crate design grille- Security approach lamps
- Solar-tinted glass-inc: windshield, front door glass
- Speed-sensitive dual intermittent front wipers

## Safety

- (2) front/rear pwr points- (3) grab handles- (4) color keyed coat hooks
- (4) load floor tie-down hooks- 5-passenger seating
- 60/40 split-folding 2nd row seat w/head restraints
- AM/FM stereo w/6-disc in-dash CD/MP3 player, clock-inc: 290-watt Audiophile system, 7-speakers, Sirius satellite capability
- Air conditioning w/dual zone automatic temperature control
- Auxiliary steering wheel audio/climate controls- Cargo area dome light
- Cargo management system- Center dome lamp w/1st row map lights
- Color keyed 4-spoke leather-wrapped steering wheel
- Color keyed cloth sunvisors w/illuminated visor vanity mirrors
- Color keyed front/rear carpeted floor mats
- Color keyed plastic scuff plates on all doors & liftgate - Electrochromic rearview mirror
- High-series floor console-inc: storage bin, (2) front & (2) rear cup holders, front & rear pwr points, coin holder, tissue/map holder, molded mat w/pencil holder, heat vents/AC registers
- Illuminated entry- Illuminated glove box- Keyless entry pad
- Leather-trimmed heated front bucket seats w/8-way driver/6-way passenger pwr, adjustable head restraints, pwr driver/manual passenger lumbar supports, 2-position driver seat memory
- Medium pecan woodgrain cordia door trim spears/instrument panel - Message center
- Outside temp display & compass
- Overhead console-inc: two map lamps, ticket clip, sunglass holder, garage door opener bin
- Pwr door locks w/cargo area lock/unlock button
- Pwr windows-inc: "one-touch-down" driver window- Rear window defroster
- Remote keyless entry-inc: 2 key fobs, 2-stage unlocking, autolock, liftgate glass release
- Securilock/immobilizer passive anti-theft system
- Speed control w/fingertip control, tap-up/tap-down feature- Tilt steering column
- Tire pressure monitoring system

## Mechanical

- 17" "sparkle silver" painted cast aluminum wheels - 22.5 gallon fuel tank- 3.55 axle ratio
- 4-Wheel independent suspension- 4-wheel anti-lock brakes
- 4.0L SOHC V6 engine \*Gas only in CA, NY, VT, & ME. Flexible Fuel capable in all other states\*
- 5-speed automatic transmission w/OD
- 72 amp maintenance-free battery w/battery saver feature
- AdvanceTrac w/roll stability control- Brake/shift interlock
- Class II trailer towing w/receiver hitch-inc: 3500# capacity, 4-pin connector
- Engine block heater \*Standard on non-fleet vehicles in AK, MN, ND, SD, MT, WI & WY\*
- Full-size spare tire w/steel wheel, underbody mount- P245/65R17 all-terrain OWL tires
- Pwr 4-wheel disc brakes- Pwr rack & pinion steering- Rear wheel drive

## Option Packages

### Factory Installed Packages

-  
4.0L SOHC V6 ENGINE

---

Four Seasons Auto Sales

[4seasonscars.com](http://4seasonscars.com)

(510) 274-5646

21621 Mission Blvd

Hayward, CA 94541

© 2021 AutoRevo - All rights reserved. - Powered by AutoRevo