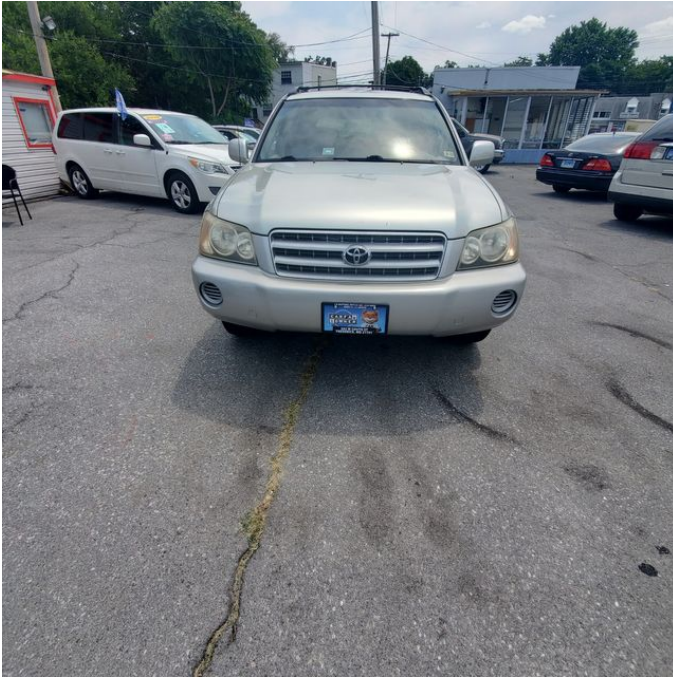


# 2003 Toyota Highlander

View this car on our website at [c7b5e59b-f3b3-4119-9e85-478096b56935.autorevo-websites.com/6984523/ebrochure](http://c7b5e59b-f3b3-4119-9e85-478096b56935.autorevo-websites.com/6984523/ebrochure)



Our Price **\$5,995**

## Specifications:

|                    |                                      |
|--------------------|--------------------------------------|
| <b>Year:</b>       | 2003                                 |
| <b>VIN:</b>        | JTEGD21AX30073009                    |
| <b>Make:</b>       | Toyota                               |
| <b>Stock:</b>      | 073009                               |
| <b>Model/Trim:</b> | Highlander                           |
| <b>Condition:</b>  | Pre-Owned                            |
| <b>Body:</b>       | SUV                                  |
| <b>Exterior:</b>   | Millenium Silver Metallic            |
| <b>Engine:</b>     | 2.4L DOHC MPFI 16-valve 4-cyl engine |
| <b>Interior:</b>   | Gray Cloth                           |
| <b>Mileage:</b>    | 166,491                              |
| <b>Drivetrain:</b> | Front Wheel Drive                    |
| <b>Economy:</b>    | City 22 / Highway 27                 |



2003 Toyota Highlander

J R Motors - 301-228-9695 - View this car on our website at [c7b5e59b-f3b3-4119-9e85-478096b56935.autorevo-websites.com/6984523/ebrochure](http://c7b5e59b-f3b3-4119-9e85-478096b56935.autorevo-websites.com/6984523/ebrochure)

**Our Location :**



2003 Toyota Highlander

J R Motors - 301-228-9695 - View this car on our website at [c7b5e59b-f3b3-4119-9e85-478096b56935.autorevo-websites.com/6984523/ebrochure](https://c7b5e59b-f3b3-4119-9e85-478096b56935.autorevo-websites.com/6984523/ebrochure)

## Installed Options

### Interior

- Dual sun visors-inc: vanity mirrors, sliding extensions- Pwr windows/door locks
- 6-way manual driver seat- Air conditioning
- Analog instrument cluster-inc: tachometer, LCD odometer w/twin tripmeters, water temp/fuel gauges
- Cargo area grocery bag hooks
- Center console-inc: 2 adjustable cup holders, storage compartment, floor-level storage tray
- Cloth 60/40 split/fold-down rear seat w/recline & height-adjustable headrests
- Cruise control
- Deluxe 3-in-1 AM/FM stereo w/cassette/compact disc-inc: 6 speakers, fixed mast antenna
- Digital quartz clock- Door courtesy lamps- Fabric door trim w/map pockets
- Front seat/rear door cupholders- Front/cargo area aux pwr outlets- Illum entry system
- Maplight- Multi-adjustable cloth front captains chairs w/height-adjustable headrests
- Remote hood/fuel door releases- Tilt steering wheel
- Warning lights-inc: seat belt, airbag, door ajar, battery, oil pressure, brake, check engine, washer fluid, low fuel

### Exterior

- Color-keyed pwr mirrors- Color-keyed body-side moldings
- Color-keyed front/rear bumpers- Color-keyed grille- Intermittent rear window wiper
- Multi-reflector halogen headlamps w/auto-off- UV reduction glass
- Variable intermittent windshield wipers

### Safety

- Dual sun visors-inc: vanity mirrors, sliding extensions- Pwr windows/door locks
- 6-way manual driver seat- Air conditioning
- Analog instrument cluster-inc: tachometer, LCD odometer w/twin tripmeters, water temp/fuel gauges
- Cargo area grocery bag hooks
- Center console-inc: 2 adjustable cup holders, storage compartment, floor-level storage tray
- Cloth 60/40 split/fold-down rear seat w/recline & height-adjustable headrests
- Cruise control
- Deluxe 3-in-1 AM/FM stereo w/cassette/compact disc-inc: 6 speakers, fixed mast antenna
- Digital quartz clock- Door courtesy lamps- Fabric door trim w/map pockets
- Front seat/rear door cupholders- Front/cargo area aux pwr outlets- Illum entry system
- Maplight- Multi-adjustable cloth front captains chairs w/height-adjustable headrests
- Remote hood/fuel door releases- Tilt steering wheel
- Warning lights-inc: seat belt, airbag, door ajar, battery, oil pressure, brake, check engine, washer fluid, low fuel

### Mechanical

- 4-wheel anti-lock brakes- (5) P225/70R16 all-season SBR BSW tires
- 19.8 gallon fuel tank- 2.4L DOHC MPFI 16-valve 4-cyl engine
- 4-speed automatic transmission w/Snow Mode
- 4-wheel independent MacPherson strut suspension- 5-spoke styled steel wheels
- Brake assist system w/electronic brake distribution- Front wheel drive
- Front/rear stabilizer bars- Pwr 4-wheel disc brakes- Pwr rack & pinion steering

J R Motors

[c7b5e59b-f3b3-4119-9e85-478096b56935.autorevo-websites.com](https://www.c7b5e59b-f3b3-4119-9e85-478096b56935.autorevo-websites.com)

301-228-9695

503 W South St

Frederick, MD 21701

© 2024 AutoRevo - All rights reserved. - Powered by AutoRevo