



2018 Chevrolet Camaro 2SS

Our Price \$42,991

View this vehicle on our website at parksdeals.com

Parks Chevrolet, Inc.

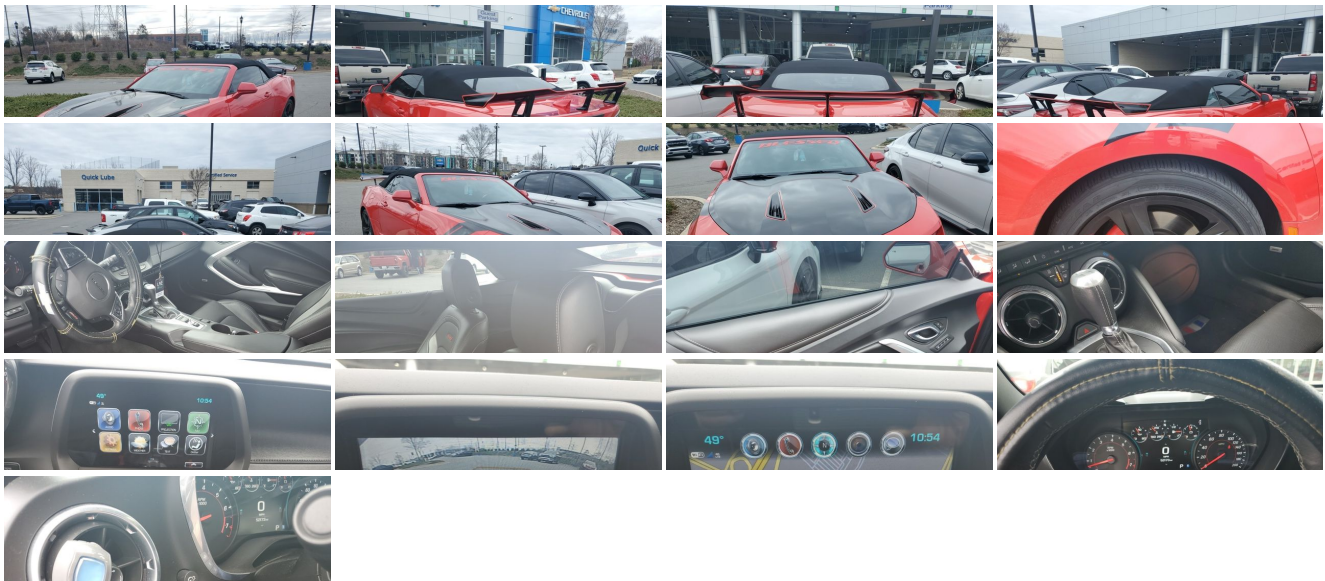
[833-825-2763](tel:833-825-2763)

615 NC-66 South, Kernersville, NC 27284

[Photos](#)

[Details](#)

[Contact](#)



Specifications:

Year:	2018
VIN:	1G1FH3D72J0108447
Make:	Chevrolet
Stock:	2C3593B
Model/Trim:	Camaro 2SS
Condition:	Pre-Owned
Body:	Convertible
Exterior:	Red Hot
Engine:	ENGINE, 6.2L (376 CI) V8 DI, VVT
Interior:	Jet Black Leather
Transmission:	TRANSMISSION, 8-SPEED AUTOMATIC
Mileage:	52,173
Drivetrain:	Rear Wheel Drive
Economy:	City 17 / Highway 27

Vehicle Description

2018 Chevrolet Camaro SS

Apple CarPlay/Android Auto, Dual Mode Performance Exhaust, Exterior Parking Camera Rear, Heads-Up Display, Power convertible roof, Preferred Equipment Group 2SS, Rear Parking Sensors, Remote keyless entry, Remote Vehicle Starter System, Ventilated front seats. Clean CARFAX.

17/27 City/Highway MPG

Call 704.288.0662 to check on the availability of this vehicle and schedule a private showing or shop 24 hours a day @ WWW.PARKSCHARLOTTE.COM. *All prices are plus tax, tag, title, and documentation. All vehicles are fully reconditioned by a Master ASE Factory Trained Certified Technician.

Awards:

* JD Power Dependability Study * Car and Driver 10 Best Cars * 2018 KBB.com 10 Best Used Sports Cars Under \$30,000 * 2018 KBB.com 10 Coolest Cars Under \$25,000 * 2018 KBB.com 5-Year Cost to Own Awards * 2018 KBB.com 10 Most Awarded Brands Car and Driver, January 2017.

Installed Options

Interior

- Seats, Leather-trimmed front Sport bucket- Seat adjuster, driver, 8-way power
- Seats, heated driver and front passenger - Seats, ventilated driver and front passenger
- Floor mats, carpeted front- Door locks, power programmable with lockout protection
- Keyless Open and Start includes 2 remote transmitters that enable automatic door unlock and open by touching door switch
- Defogger, rear-window, electric- Seat adjuster, front passenger, 6-way power
- Seat, rear fixed- Dead pedal, driver- Sill plates, illuminated- Steering wheel, heated
- Steering wheel, leather-wrapped, flat-bottom
- Steering column, manual rake and telescopic
- Head-Up Display with color digital readouts for vehicle speed, selected gear, G-Force, audio system information, high-beam indicator, compass, outside air temperature, turn signals, tachometer, vehicle messages, Turn-by-Turn information and phone information
- Speedometer, miles/kilometers
- Driver Information Center, enhanced, 8" diagonal multi-color re-configurable display
- Compass display
- Air conditioning, dual-zone automatic climate control with individual climate settings for driver and dedicated passenger controls and outside temperature display
- Power outlet, 1 located on center console- Wireless Charging for devices
- Windows, power with driver and passenger Express-Down/Up
- Universal Home Remote includes garage door opener, 3-channel programmable
- Cruise control, electronic with set and resume speed, steering wheel mounted
- Mirror, inside rearview auto-dimming, frameless
- Visors, driver and front passenger vanity mirrors- Trunk release, power
- Theft-deterrent system, electrical, unauthorized entry- Glovebox, lockable
- Cup holders, 2 front- Lighting, front reading lamps

Option Packages

Factory Installed Packages

ENGINE, 6.2L (376 CI) V8 DI, VVT
(455 hp [339.3 kW] @ 6000 rpm, 455 lb-ft of torque [614.3 N-m] @ 4400 rpm)

TRANSMISSION, 8-SPEED AUTOMATIC
includes transmission oil cooler and (BTV)
remote vehicle starter system **\$1,495**

Option Packages Total **\$1,495**

- Cup holders, 2 front- Lighting, front reading lamps
- Lighting, interior spectrum 24 different color selections- Shift knob, leather-wrapped
- Interior trim, aluminum accents on door trim and shifter cap

Exterior

- Wheels, 20" x 8.5" (50.8 cm x 21.6 cm) front and 20" x 9.5" (50.8 cm x 24.1 cm) rear bright 5-spoke Silver-painted aluminum
- Convertible top, power folding, remote control (down only) includes glass rear window with integral defogger
- Tires, 245/40ZR20 front and 275/35ZR20 rear, blackwall, summer-only, run-flat (Do not use summer only tires in winter conditions, as it would adversely affect vehicle safety, performance and durability. Use only GM-approved tire and wheel combinations. Unapproved combinations may change the vehicle's performance characteristics. For important tire and wheel information, go to <https://my.chevrolet.com/learnAbout/chevrolettires> or see your dealer.)
- Spoiler, rear, stanchion
- Headlamps, high intensity discharge with automatic exterior lamp control
- Mirrors, outside heated power-adjustable and driver-side auto-dimming, body-color
- Wipers, front variable-speed, intermittent with washers

Safety

- Seats, Leather-trimmed front Sport bucket- Seat adjuster, driver, 8-way power
- Seats, heated driver and front passenger- Seats, ventilated driver and front passenger
- Floor mats, carpeted front- Door locks, power programmable with lockout protection
- Keyless Open and Start includes 2 remote transmitters that enable automatic door unlock and open by touching door switch
- Defogger, rear-window, electric- Seat adjuster, front passenger, 6-way power
- Seat, rear fixed- Dead pedal, driver- Sill plates, illuminated- Steering wheel, heated
- Steering wheel, leather-wrapped, flat-bottom
- Steering column, manual rake and telescopic
- Head-Up Display with color digital readouts for vehicle speed, selected gear, G-Force, audio system information, high-beam indicator, compass, outside air temperature, turn signals, tachometer, vehicle messages, Turn-by-Turn information and phone information
- Speedometer, miles/kilometers
- Driver Information Center, enhanced, 8" diagonal multi-color re-configurable display
- Compass display
- Air conditioning, dual-zone automatic climate control with individual climate settings for driver and dedicated passenger controls and outside temperature display
- Power outlet, 1 located on center console- Wireless Charging for devices
- Windows, power with driver and passenger Express-Down/Up
- Universal Home Remote includes garage door opener, 3-channel programmable
- Cruise control, electronic with set and resume speed, steering wheel mounted
- Mirror, inside rearview auto-dimming, frameless
- Visors, driver and front passenger vanity mirrors- Trunk release, power
- Theft-deterrent system, electrical, unauthorized entry- Glovebox, lockable
- Cup holders, 2 front- Lighting, front reading lamps
- Lighting, interior spectrum 24 different color selections- Shift knob, leather-wrapped
- Interior trim, aluminum accents on door trim and shifter cap

Mechanical

- Transmission, 6-speed manual (Includes Active Rev Matching.)
- Engine, 6.2L (376 ci) V8 DI, VVT (455 hp [339.3 kW] @ 6000 rpm, 455 lb-ft of torque [614.3 N-m] @ 4400 rpm)
- Rear axle, 3.73 ratio (Included with (MN6) 6-speed manual transmission.)
- Cooling, external engine oil cooler- Cooling system, extra capacity
- Driver Selector Mode up to 4 modes available for various driving conditions - Snow/Ice, Tour, Sport and Track (SS and ZL1 models only)
- Differential, limited slip- Battery rundown protection- Rear wheel drive
- Suspension, Performance- Steering, power, variable ratio, electric
- Brakes, Brembo 4-piston front and rear, performance, 4-wheel antilock, 4-wheel disc
- Fueling system, capless- Exhaust, dual-outlet stainless-steel with bright tips

Parks Chevrolet, Inc.

Parks Chevrolet, Inc.

View this car on our website at parksdeals.com/6984327

Website: parksdeals.com

Phone: 833-825-2763

Map: [615 NC-66 South, Kernersville, NC 27284](#)

