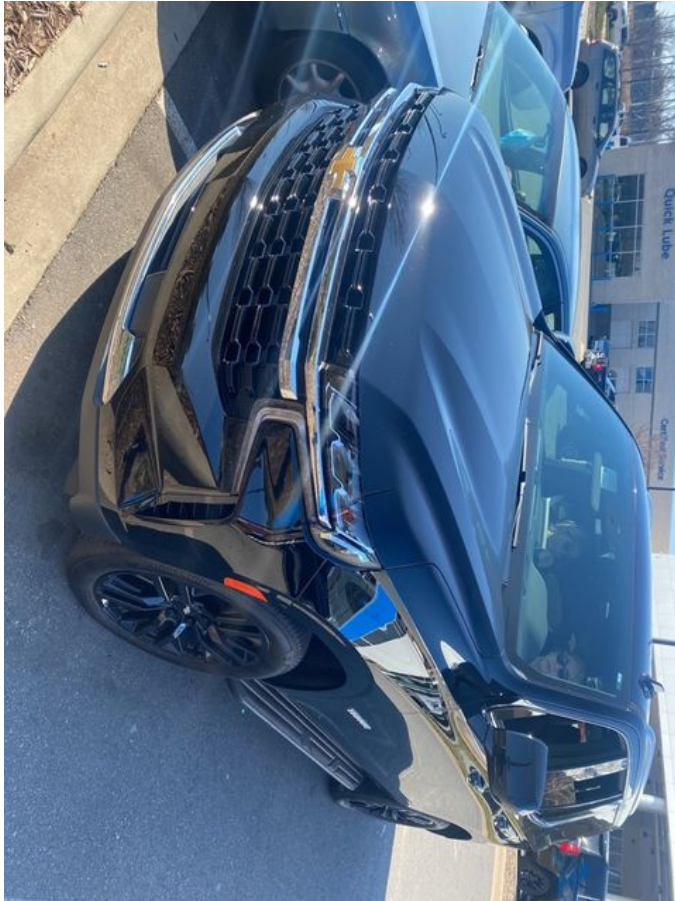


2021 Chevrolet Tahoe LS

View this car on our website at parksdeals.com/6983801/ebrochure



Our Price **\$61,524**

Specifications:

Year:	2021
VIN:	1GN5CMKD6MR418076
Make:	Chevrolet
Stock:	199655A
Model/Trim:	Tahoe LS
Condition:	Pre-Owned
Body:	SUV
Exterior:	Black
Engine:	ENGINE, 5.3L ECOTEC3 V8
Interior:	Jet Blk Premium Clth Cloth
Mileage:	7,118
Drivetrain:	Rear Wheel Drive
Economy:	City 15 / Highway 20

2021 Chevrolet Tahoe LS

Jet Black Cloth, 1st & 2nd Row Color-Keyed Carpeted Floor Mats, 2 USB Data Ports, Apple CarPlay/Android Auto, Color-Keyed Carpeting Floor Covering, Driver & Front Outboard Passenger Airbags, Floor Console w/Storage Area, Front dual zone A/C, Fully automatic headlights, HD Radio, Infotainment Display, Leather-Wrapped Steering Wheel, LED Daytime Running Lamps, Preferred Equipment Group 1LS, Premium Cloth Seat Trim, Remote Start, SiriusXM Radio w/360L. CARFAX One-Owner. Clean CARFAX.

Odometer is 4076 miles below market average!

Call 704.288.0662 to check on the availability of this vehicle and schedule a private showing or shop 24 hours a day @ WWW.PARKSCHARLOTTE.COM. *All prices are plus tax, tag, title, and documentation. All vehicles are fully reconditioned by a Master ASE Factory Trained Certified Technician.

Awards:

* JD Power Automotive Performance, Execution and Layout (APEAL) Study * ALG Residual Value

Vehicle History Report : as Of 04/26/2024



Snapshot

2021 CHEVROLET TAHOE LS



No accidents or damage reported to CARFAX



3 Service history records



At least 1 open recall



2 Previous owners



Personal vehicle



7,776 Last reported odometer reading



FREE CARFAX Report

See the full CARFAX Report for additional information

*carfax Snapshot is a reflection of available information on the date the report was pulled. carfax is constantly being updated with new information and is subject to change at any time.

Our Location :



2021 Chevrolet Tahoe LS

Parks Chevrolet, Inc. - 833-825-2763 - View this car on our website at parksdeals.com/6983801/ebrochure

Installed Options

Interior

- Seats, front bucket- Seat trim, cloth
- Floor mats, color-keyed carpeted first and second row, removable
- Steering wheel controls, mounted audio Driver Information Center, cruise control, Forward Collision Alert following gap button and heated steering wheel (when equipped)
- Door locks, power programmable with lockout protection and delayed locking (When ordered with (9C1) Police Vehicle or (5W4) Special Service Vehicle, Auto Lockout is disabled on driver door.)
- Keyless Open includes extended range Remote Keyless Entry
- Cruise control, electronic with set and resume speed
- USB data ports 2, one type-A and one type-C, includes SD Card Reader, located within front center console
- USB data ports, 2, one type-A and one type-C, located within center console
- Window, power with driver Express-Up/Down
- Window, power with front passenger Express-Up/Down
- Windows, power with rear Express-Down
- Air conditioning, tri-zone automatic climate control with individual climate settings for driver, right front passenger and rear seat occupants
- Air conditioning, rear- Keyless start, push button

Seat adjusters, 8 way power includes 6 way power front passenger seat with 2 way power

Option Packages

Factory Installed Packages

ENGINE, 5.3L ECOTEC3 V8

with Dynamic Fuel Management, Direct Injection and Variable Valve Timing, includes aluminum block construction (355 hp [265 kW] @ 5600 rpm, 383 lb-ft of torque [518 Nm] @ 4100 rpm)

- Seat adjusters, 6-way power includes 6-way power front passenger seat with 2-way power lumbar
- Seat adjusters, 10-way power includes 8-way power driver seat with 2-way power lumbar
- Seats, second row 60/40 split-folding bench, manual
- Seats, third row 60/40 split-folding bench, manual
- Console, floor with storage area and removable storage tray (Deleted when (AZ3) 40/20/40 split-bench front seats are ordered.)
- Floor covering, color-keyed carpeting- Electronic Precision Shift
- Steering column, manual tilt and telescopic- Steering wheel, leather-wrapped
- Driver Information Center, 4.2" diagonal color display includes driver personalization
- Rear Seat Reminder- Remote start
- Theft-deterrent system, content, electrical, unauthorized entry
- USB charging-only ports, 4, (2) located on rear of center console and (2) in 3rd row (1 left and 1 right side below quarter glass side window)
- Defogger, rear-window electric
- Power outlets, 2, 120-volt, located on the rear of the center seat and rear cargo area
- Power outlet, front auxiliary, 12-volt, located in the center stack of instrument panel
- Mirror, inside rearview manual day/night
- Visors, driver and front passenger illuminated vanity mirrors, sliding
- Assist handles, overhead, driver and front passenger, located in headliner
- Assist handles, front passenger A-pillar and second row outboard B-pillar (Deleted when SEO (7X2) left- and right-hand spotlamps or SEO (7X3) left-hand spotlamp are ordered.)
- Lighting, interior with dome light, driver- and passenger-side door switch with delayed entry feature, cargo lights, door handle or Remote Keyless Entry-activated illuminated entry and map lights in front and second seat positions. On Police/Special Service vehicles, the control switch is located in the roof console in lieu of the driver- and passenger-side door switch with delayed entry feature.
- Cargo management system
- Chevrolet Connected Access capable (Subject to terms. See onstar.com or dealer for details.)

Exterior

- Wheels, 18" x 8.5" (45.7 cm x 21.6 cm) Bright Silver painted aluminum
- Tires, 265/65R18SL all-season, blackwall (Standard with (PZX) 18" Bright Silver painted aluminum wheels only.)
- Wheel, full-size spare, 17" (43.2 cm) steel - Tire, spare P265/70R17 all-season, blackwall
- Luggage rack side rails, roof-mounted, bright
- Tire carrier, lockable outside spare, winch-type mounted under frame at rear
- Active aero shutters, upper (Standard with (L84) 5.3L EcoTec3 V8 engine only.)
- Fascia, front- Assist steps, Black with chrome accent strip - Headlamps, LED
- IntelliBeam, automatic high beam on/off - Lamps, stop and tail, LED
- Mirrors, outside heated power-adjustable, manual-folding, body-color
- Mirror caps, body-color
- Glass, deep-tinted (all windows, except light-tinted glass on windshield and driver- and front passenger-side glass)
- Glass, acoustic, laminated- Glass, windshield shade band
- Wipers, front intermittent, Rainsense- Wiper, rear intermittent with washer
- Door handles, body-color- Liftgate, rear manual

Safety

- Seats, front bucket- Seat trim, cloth
- Floor mats, color-keyed carpeted first and second row, removable
- Steering wheel controls, mounted audio Driver Information Center, cruise control, Forward Collision Alert following gap button and heated steering wheel (when equipped)
- Door locks, power programmable with lockout protection and delayed locking (When ordered with (9C1) Police Vehicle or (5W4) Special Service Vehicle, Auto Lockout is disabled on driver door.)
- Keyless Open includes extended range Remote Keyless Entry
- Cruise control, electronic with set and resume speed
- USB data ports 2, one type-A and one type-C, includes SD Card Reader, located within front center console
- USB data ports, 2, one type-A and one type-C, located within center console
- Window, power with driver Express-Up/Down
- Window, power with front passenger Express-Up/Down
- Windows, power with rear Express-Down
- Air conditioning, tri-zone automatic climate control with individual climate settings for driver, right front passenger and rear seat occupants
- Air conditioning, rear- Keyless start, push button
- Seat adjusters, 8-way power includes 6-way power front passenger seat with 2-way power lumbar
- Seat adjusters, 10-way power includes 8-way power driver seat with 2-way power lumbar
- Seats, second row 60/40 split-folding bench, manual
- Seats, third row 60/40 split-folding bench, manual
- Console, floor with storage area and removable storage tray (Deleted when (AZ3) 40/20/40 split-bench front seats are ordered.)

Options shown here are ordered by:

- Floor covering, color-keyed carpeting- Electronic Precision Shift
- Steering column, manual tilt and telescopic- Steering wheel, leather-wrapped
- Driver Information Center, 4.2" diagonal color display includes driver personalization
- Rear Seat Reminder- Remote start
- Theft-deterrent system, content, electrical, unauthorized entry
- USB charging-only ports, 4, (2) located on rear of center console and (2) in 3rd row (1 left and 1 right side below quarter glass side window)
- Defogger, rear-window electric
- Power outlets, 2, 120-volt, located on the rear of the center seat and rear cargo area
- Power outlet, front auxiliary, 12-volt, located in the center stack of instrument panel
- Mirror, inside rearview manual day/night
- Visors, driver and front passenger illuminated vanity mirrors, sliding
- Assist handles, overhead, driver and front passenger, located in headliner
- Assist handles, front passenger A-pillar and second row outboard B-pillar (Deleted when SEO (7X2) left- and right-hand spotlamps or SEO (7X3) left-hand spotlight are ordered.)
- Lighting, interior with dome light, driver- and passenger-side door switch with delayed entry feature, cargo lights, door handle or Remote Keyless Entry-activated illuminated entry and map lights in front and second seat positions. On Police/Special Service vehicles, the control switch is located in the roof console in lieu of the driver- and passenger-side door switch with delayed entry feature.
- Cargo management system
- Chevrolet Connected Access capable (Subject to terms. See onstar.com or dealer for details.)

Mechanical

- Transmission, 10-speed automatic electronically controlled with overdrive, includes Traction Select System including tow/haul (Most vehicles built on or after 6-7-2021 with a V8 engine will have (NSS) Not Equipped with Automatic Stop/Start, which removes Automatic Stop/Start, Engine control stop/start disable button and its content.)
- Fuel, gasoline, E15 (Standard with (L84) 5.3L EcoTec3 V8 engine only.)
- Engine, 5.3L EcoTec3 V8 with Dynamic Fuel Management, Direct Injection and Variable Valve Timing, includes aluminum block construction (355 hp [265 kW] @ 5600 rpm, 383 lb-ft of torque [518 Nm] @ 4100 rpm)
- Rear axle, 3.23 ratio- Suspension Package, Premium Smooth Ride
- GVWR, 7400 lbs. (3357 kg) (Standard on 2WD models with (L84) 5.3L EcoTec3 V8 engine or (L87) 6.2L EcoTec3 V8 engine.)
- Automatic Stop/Start (Standard on vehicles built before 6-7-2021. Most vehicles built on or after 6-7-2021 equipped with a V8 engine will have (NSS) Not Equipped with Automatic Stop/Start, which removes Automatic Stop/Start, Engine control stop/start disable button and its content. See dealer for details.)
- Engine control, stop/start system disable button, non-latching (Standard on vehicles built before 6-7-2021. Most vehicles built on or after 6-7-2021 equipped with a V8 engine will have (NSS) Not Equipped with Automatic Stop/Start, which removes Automatic Stop/Start, Engine control stop/start disable button and its content. See dealer for details.)
- Engine air filtration monitor- Differential, mechanical limited-slip- Rear wheel drive
- Cooling, external engine oil cooler, heavy-duty air-to-oil integral to driver side of radiator (Deleted when (LM2) Duramax 3.0L Turbo-Diesel I6 engine is ordered.)
- Cooling, auxiliary transmission oil cooler, heavy-duty air-to-oil
- Battery, 800 cold-cranking amps with 80 amp hour rating (Standard with (L84) 5.3L EcoTec3 V8 engine only.)
- Alternator, 220 amps (Standard with (L84) 5.3L EcoTec3 V8 engine only.)
- Trailering equipment includes trailering hitch platform, 7-wire harness with independent fused trailering circuits mated to a 7-way connector and 2" trailering receiver
- Trailer sway control- Hitch Guidance- Suspension, front coil-over-shock with stabilizer bar
- Suspension, rear multi-link with coil springs- Steering, power
- Brakes, 4-wheel antilock, 4-wheel disc with DURALIFE rotors
- Exhaust, single system, single-outlet- Mechanical Jack with tools

Parks Chevrolet, Inc.

parksdeals.com

833-825-2763

615 NC-66 South

Kernersville, NC 27284

© 2024 AutoRevo - All rights reserved. - **Powered by AutoRevo**