



2014 Chevrolet Corvette Stingray Z51 2LT Red Gut ONLY 16k Mile wow

Our Price \$54,900

View this vehicle on our website at njtruckking.com

King of Cars and Trucks

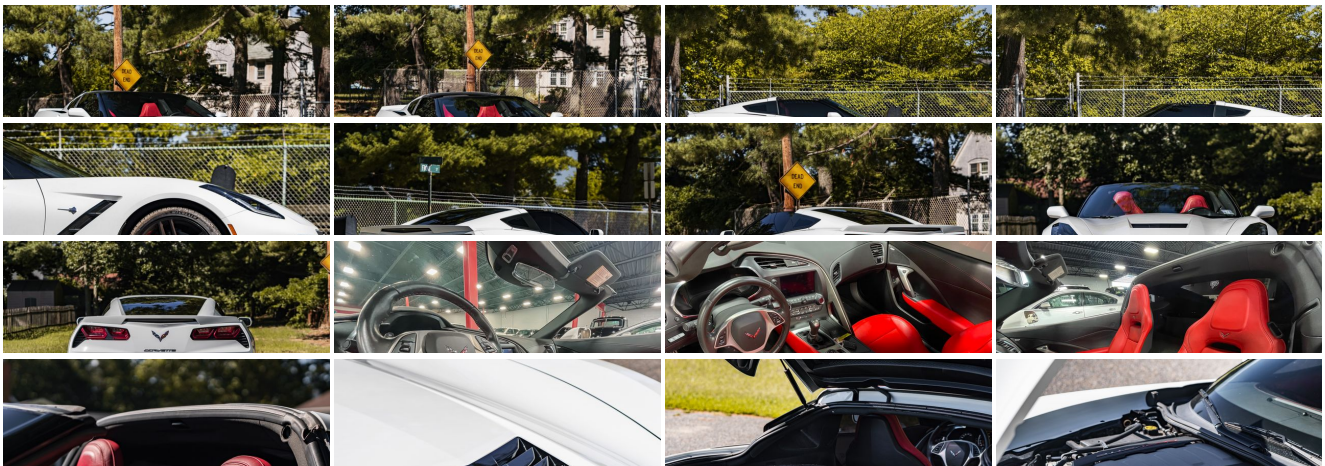
[856-693-3181](tel:856-693-3181)

1229 Broadway , Westville, New Jersey 08093

[Photos](#)

[Details](#)

[Contact](#)





Specifications:

Year:	2014
VIN:	1G1YJ2D74E5131616
Make:	Chevrolet
Model/Trim:	Corvette Stingray Z51 2LT Red Gut ONLY 16k Mile wow
Condition:	Pre-Owned
Body:	Coupe
Exterior:	White
Engine:	ENGINE, 6.2L (376 CI) V8 DI
Interior:	Red Leather
Transmission:	TRANSMISSION, 7-SPEED MANUAL
Mileage:	16,596
Drivetrain:	Rear Wheel Drive
Economy:	City 16 / Highway 28

Vehicle Description

MINT CORVETTE COUPE!

2014 CHEVROLET CORVETTE COUPE

Z51 2LT

6.2L V8

MANUAL TRANSMISSION

(ONLY 16,596 ORIGINAL / ACTUAL MILES)

CLEAN CARFAX !

BEST COLOR COMBO

RED GUT (INTERIOR)

GARAGED SINCE NEW

EXCELLENT CONDITION

RUNS AND DRIVES LIKE NEW!

OWNERS MANUALS

GLASS TOP AND HARD TOP

MINT!

WILL NOT LAST!

\$54,900

CALL / TEXT ROB 856-381-6621 WITH ANY QUESTIONS

Installed Options

Interior

Option Packages

Factory Installed Packages

- Console, floor 2 covered cup holders, auxiliary power outlet, USB ports, SD card slot, auxiliary input jack and storage
- Door locks, power programmable with lockout protection- Floor mats, carpeted
- Keyless Access with push button start and 2 remote transmitters that enable automatic door unlock and open by touching door switch
- Luggage shade
- Memory Package, recalls 2 driver "presets" for 8-way power seat, outside mirrors and tilt/telescoping steering column
- Perforated Mulan leather seating surfaces- Seats, GT bucket
- Steering column, power tilt and telescopic
- Theft-deterrent system, body security content and unauthorized entry electrical
- Theft-deterrent system, vehicle, push button start, immobilizer and audible visual alarm
- 2LT interior trim seats, console and door armrests in interior color selected
- Air conditioning, dual-zone automatic climate control with individual climate settings for driver and dedicated passenger controls and outside temperature display
- Air filtration system with pollen filter- Cargo net
- Cruise control, electronic with set and resume speed - Defogger, rear-window, electric
- Driver Information Center, color
- Hatch release, push button open with power hatch pulldown
- Head-Up Display with color readouts for street mode, track mode with g-meter, vehicle speed, engine rpm
- Lighting, interior with courtesy, cargo and glovebox
- Mirror, inside rearview auto-dimming, frameless- Oil life monitoring system
- Seat adjusters, driver and passenger 8-way
- Seat adjusters, power bolster and power lumbar
- Seats, heated and vented driver and passenger
- Steering wheel controls, audio, voice recognition and Driver Information Center
- Steering wheel, 3-spoke leather-wrapped
- Storage, with electric locking glovebox, behind screen storage, center console and rear compartment with cover
- Universal Home Remote includes garage door opener, 3-channel programmable, located on driver visor
- Visors, driver and passenger illuminated vanity mirrors
- Windows, power with driver and passenger Express-Down/Up

Exterior

- Headlamps, high intensity discharge (HID), Xenon, LED park and turn signals and Daytime Running Lamps
- Tires, P245/35ZR19 front and P285/30ZR20 rear, performance, run flat
- Wheels, 5-split spoke, Silver-painted aluminum 19" x 8.5" (48.3 cm x 21.6 cm) front and 20" x 10" (50.8 cm x 25.4 cm) rear
- Glass, Solar-Ray light-tinted
- Mirrors, outside heated power-adjustable and driver-side auto-dimming, body-color
- Roof panel, carbon fiber, painted body-color, removable- Wipers, front intermittent

Safety

- Console, floor 2 covered cup holders, auxiliary power outlet, USB ports, SD card slot, auxiliary input jack and storage
- Door locks, power programmable with lockout protection- Floor mats, carpeted
- Keyless Access with push button start and 2 remote transmitters that enable automatic door unlock and open by touching door switch
- Luggage shade
- Memory Package, recalls 2 driver "presets" for 8-way power seat, outside mirrors and tilt/telescoping steering column
- Perforated Mulan leather seating surfaces- Seats, GT bucket
- Steering column, power tilt and telescopic
- Theft-deterrent system, body security content and unauthorized entry electrical
- Theft-deterrent system, vehicle, push button start, immobilizer and audible visual alarm
- 2LT interior trim seats, console and door armrests in interior color selected
- Air conditioning, dual-zone automatic climate control with individual climate settings for driver and dedicated passenger controls and outside temperature display
- Air filtration system with pollen filter- Cargo net
- Cruise control, electronic with set and resume speed - Defogger, rear-window, electric
- Driver Information Center, color
- Hatch release, push button open with power hatch pulldown
- Head-Up Display with color readouts for street mode, track mode with g-meter, vehicle speed, engine rpm
- Lighting, interior with courtesy, cargo and glovebox
- Mirror, inside rearview auto-dimming, frameless- Oil life monitoring system
- Seat adjusters, driver and passenger 8-way
- Seat adjusters, power bolster and power lumbar
- Seats, heated and vented driver and passenger
- Steering wheel controls, audio, voice recognition and Driver Information Center
- Steering wheel, 3-spoke leather-wrapped

ENGINE, 6.2L (376 CI) V8 DI
(455 hp [339.3 kW] @ 6000 rpm, 460 lb-ft of torque [621.0 N-m] @ 4600 rpm)

TRANSMISSION, 7-SPEED MANUAL
with Active Rev Matching with Z51 performance ratios

- Steering wheel, 3-spoke leather-wrapped
- Storage, with electric locking glovebox, behind screen storage, center console and rear compartment with cover
- Universal Home Remote includes garage door opener, 3-channel programmable, located on driver visor
- Visors, driver and passenger illuminated vanity mirrors
- Windows, power with driver and passenger Express-Down/Up

Mechanical

- Differential, electronic limited slip, rear- Rear axle, 3.42 ratio, limited slip
- Brakes, performance 4-wheel antilock, 4-wheel disc- Calipers, Black-painted
- Cooler, rear differential- Dry sump oil system- Engine access, rear-opening hood
- Engine, 6.2L (376 ci) V8 DI (455 hp [339.3 kW] @ 6000 rpm, 460 lb-ft of torque [621.0 N-m] @ 4600 rpm)
- Exhaust, aluminized stainless-steel with 3" polished stainless-steel tips
- Frame, aluminum, structure- Rear wheel drive
- Steering, power, speed-sensitive rack-and-pinion, variable ratio
- Suspension, Z51 performance
- Transmission, 7-speed manual with Active Rev Matching with Z51 performance ratios

King of Cars and Trucks

King of Cars and Trucks

View this car on our website at njtruckking.com/6983441

Website: njtruckking.com

Phone: [856-693-3181](tel:856-693-3181)

Map: [1229 Broadway, Westville, New Jersey 08093](#)

