

2007 Jeep Wrangler X

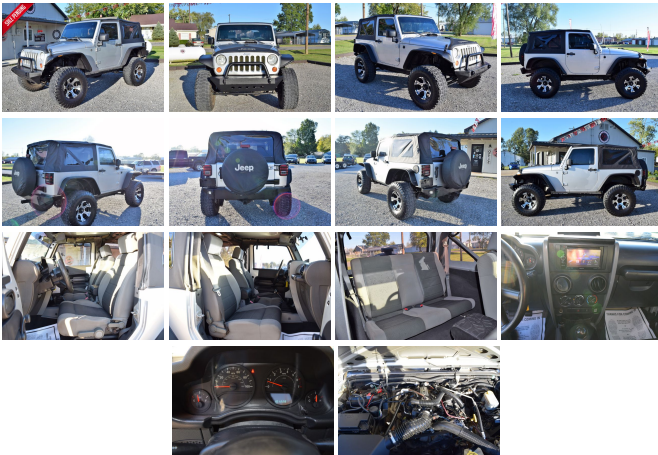
View this car on our website at 9thstreetautoplaza.com/6982512/ebrochure



Our Price **\$13,900**

Specifications:

Year:	2007
VIN:	1J4FA24177L183874
Make:	Jeep
Stock:	0527
Model/Trim:	Wrangler X
Condition:	Pre-Owned
Body:	SUV
Exterior:	Bright Silver Metallic
Engine:	3.8L SMPI V6 ENGINE
Interior:	Gray Cloth
Transmission:	6-SPEED MANUAL TRANSMISSION
Mileage:	101,235
Drivetrain:	4 Wheel Drive
Economy:	City 16 / Highway 19



2007 Jeep Wrangler X 4WD Just made available this Jeep has 101,000 Miles with a 3.8L V6 Engine, 6 Speed MANUAL Transmission. Comes with a Clean CARFAX History. Equipped with Cloth Interior, Manual Windows/Locks, Soft Top, Tow Hitch Receiver, Bushwacker Fenders, Front/Rear Aftermarket Bumpers, Lift Kit, Kenwood Stereo with Amp. Watch the video for an in-depth description at 9thstreetautoplaza.com. Call 9th Street AutoPlaza for more information 618-450-2600.

Our Location :



2007 Jeep Wrangler X

9th Street AutoPlaza - 618-450-2600 - View this car on our website at 9thstreetautoplaza.com/6982512/ebrochure

Installed Options

Interior

- (6) speakers- AM/FM stereo w/CD player-inc: MP3 playback, aux input
- Aux 12-volt pwr outlet- Cargo compartment covered storage- Dual sun visors
- Easy-access passenger seat- Glove box w/lock
- Instrumentation-inc: 100 MPH speedometer, tachometer- Mini floor console
- Rear folding seat- Sentry Key theft deterrent system- Sport bar w/full padding
- Tilt steering column- Vinyl low-back reclining front bucket seats

Exterior

- Accent color fender flares- Black front bumper- Body-color grille- Easy folding soft top
- Front door light tinted glass- Halogen headlamps- Swing-away mirrors
- Tinted sunscreen glass- Trail Rated badge- Variable intermittent windshield wipers

Safety

- (6) speakers- AM/FM stereo w/CD player-inc: MP3 playback, aux input
- Aux 12-volt pwr outlet- Cargo compartment covered storage- Dual sun visors
- Easy-access passenger seat- Glove box w/lock
- Instrumentation-inc: 100 MPH speedometer, tachometer- Mini floor console
- Rear folding seat- Sentry Key theft deterrent system- Sport bar w/full padding
- Tilt steering column- Vinyl low-back reclining front bucket seats

Mechanical

- 16" x 7" lux styled steel wheels- 160-amp alternator- 3.21 axle ratio
- 3.8L OHV 12-valve SMPi V6 engine- 4-wheel anti-lock brakes
- 4-wheel disc brakes w/hydraulic assist brake boost- 6-speed manual transmission
- 600-CCA maintenance free battery- Command-Trac shift on the fly 4WD system
- Electronic stability program w/electronic roll mitigation- Front/rear stabilizer bars
- Fuel tank skid plate- Full size spare tire w/matching wheel

- Next generation Dana 30 solid front axle- Next generation Dana 44 HD rear axle
- P225/75R16 BSW on/off-road tires- Pwr recirculating ball steering- Traction control
- Transfer case skid plate

Option Packages

Factory Installed Packages

3.8L SMPI V6 ENGINE

6-SPEED MANUAL TRANSMISSION

SPARE TIRE COVER
\$50

TRAILER TOW GROUP
-inc: 4.10 axle ratio, class II receiver hitch \$295

AIR CONDITIONING
\$895

EASY-FOLDING SOFT TOP

CLOTH LOW-BACK BUCKET SEATS

Option Packages Total
\$1,240

Financing not available

9th Street AutoPlaza
9thstreetautoplaza.com
618-450-2600

800 1/2 West 9th St
Mt. Carmel, IL 62863

© 2022 AutoRevo - All rights reserved. - Powered by AutoRevo