

# 2021 Jeep Gladiator Rubicon 4X4 DIESEL,DUPONT KEVLAR,LIFTED,BUMPERS

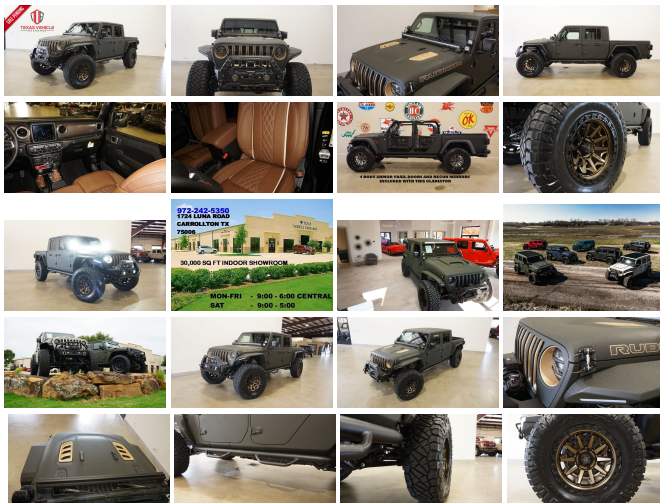
View this car on our website at [tveauto.com/6981546/ebrochure](http://tveauto.com/6981546/ebrochure)



Our Price **\$99,900**

## Specifications:

Year:	2021
VIN:	1C6JTB0ML554895
Make:	Jeep
Stock:	554895
Model/Trim:	Gladiator Rubicon 4X4 DIESEL,DUPONT KEVLAR,LIFTED,BUMPERS
Condition:	Pre-Owned
Body:	Pickup Truck
Exterior:	Green
Engine:	ENGINE: 3.0L V6 TURBO DIESEL W/ESS G3
Interior:	Brown Leather
Transmission:	TRANSMISSION: 8-SPEED AUTOMATIC (8HP75)
Mileage:	98
Drivetrain:	4 Wheel Drive
Economy:	City 16 / Highway 22



NATION WIDE FINANCING

SUBMIT CREDIT APP [WWW.TVEAUTO.COM](http://WWW.TVEAUTO.COM)

OR CALL 972-242-5350

**"TANK GREEN EDITION"**

CUSTOM BUILT **KEVLAR** 2021 JEEP  
GLADIATOR RUBICON 4X4 WITH 26R  
PACKAGE

## UPGRADES INCLUDE:

- \* TANK GREEN KEVLAR COATING WITH KING RANCH BROWN ACCENTS
- \* 3.0L V6 TURBO DIESEL ENGINE WITH START STOP
- \* CUSTOM ALEA BROWN LEATHER WITH TAN STITCHING
- \* FACTORY REMOTE START
- \* REMOTE PROXIMITY KEYLESS ENTRY
- \* COLD WEATHER GROUP
- \* ACTIVE SAFETY GROUP
- \* TRAILER TOW PACKAGE
- \* FACTORY 8.4 INCH TOUCH SCREEN NAVIGATION WITH HD AM/FM/SIRIUS STEREO & ALPINE PREMIUM AUDIO SYSTEM
- \* FACTORY BACK-UP CAMERA
- \* U-CONNECT
- \* 4 BODY ARMOR TRAIL DOORS & RECON MIRRORS
- \* SMITTYBILT STRYKER JT FRONT BUMPER WITH LED LIGHT BAR & LED FOGLIGHTS
- \* FRONT D-RINGS & ISOLATORS (KING RANCH BROWN)
- \* SMITTYBILT NEW GEN II "X20" 10,000 LB WATERPROOF AND WIRELESS CONTROL WINCH WITH SYNTHETIC ROPE
- \* FACTOR 55 PROLINK (BLACK)
- \* FACTORY MESH GRILLE PAINTED (KING RANCH BROWN)
- \* FACTORY LED HEADLIGHTS
- \* RUGGED RIDGE BLACK HEADLIGHT GUARDS
- \* MOPAR 10TH ANNIVERSARY RUBICON POWER DOME HOOD

- \* DRAKE OFF ROAD HOOD LATCHES
- \* ROAD ARMOR STEALTH JT FENDER FLARES
- \* DV8 OFF ROAD FRONT & REAR INNER FENDERS
- \* RUBICON EXPRESS 3.5" SUSPENSION LIFT KIT WITH TERAFLX FALCON SHOCKS
- \* TERAFLX FALCON STABILIZER KIT
- \* MOPAR AUXILIARY SWITCH BANK KIT
- \* 50" LED LIGHT BAR AND 4 RIGID INDUSTRIES D-SS DUALY SIDE SHOOTER LED PILLAR LIGHTS
  
- \* N-FAB BLACK TUBULAR STEPS
- \* SPRAY IN BEDLINER
- \* DV8 OFF ROAD REAR BUMPER WITH REAR PARK DISTANCE SENSORS
- \* ALL WEATHER FLOOR MATS
- \* TAZER JL PROGRAMMER WITH SPEEDOMETER CALIBRATION
- \* 20" FUEL BRONZE W/BLACK LIP "COVERT" WHEELS
- \* BRAND NEW NITTO RIDGE GRAPPLER 38X13.50R/20 TIRES

**WE BUILD EVERY JEEP WITH PRIDE! DO NOT HESITATE TO CALL US WITH THIS JEEP BUILD. WE CAN MAKE CHANGES TO THIS JEEP BUILD OR CUSTOM BUILD ANY JEEP TO YOUR PREFERENCE. GIVE US A CALL @ 972-242-5350 OR STOP BY FOR A TEST DRIVE. 1724 LUNA RD IN CARROLLTON - 2 MILES NORTH OF 635.**

## Our Location :



2021 Jeep Gladiator Rubicon 4X4 DIESEL,DUPONT KEVLAR,LIFTED,BUMPERS  
Texas Vehicle Exchange - 972-242-5350 - View this car on our website at [veauto.com/6981546/ebrochure](http://veauto.com/6981546/ebrochure)

## Installed Options

### Interior

- 2 12V DC Power Outlets- 2 12V DC Power Outlets and 1 120V AC Power Outlet
- 2 Seatback Storage Pockets
- 4-Way Passenger Seat -inc: Manual Recline and Fore/Aft Movement
- 6-Way Driver Seat -inc: Manual Recline, Height Adjustment, Fore/Aft Movement and Manual Lumbar Support
- 60-40 Folding Split-Bench Front Facing Fold Forward Seatback Premium Cloth Rear Seat
- 97 mph Maximum Speed Calibration- Air Filtration- Analog Appearance- Compass
- Cruise Control w/Steering Wheel Controls- Day-Night Rearview Mirror
- Delayed Accessory Power
- Driver And Passenger Visor Vanity Mirrors w/Driver And Passenger Illumination
- Fade-To-Off Interior Lighting- Front And Rear Map Lights
- Front Center Armrest w/Storage
- Front Seats w/Cloth Back Material and Manual Driver Lumbar
- Full Carpet Floor Covering -inc: Carpet Front And Rear Floor Mats
- Full Floor Console w/Locking Storage, 2 12V DC Power Outlets and 1 120V AC Power Outlet
- Garage Door Transmitter
- Gauges -inc: Speedometer, Odometer, Voltmeter, Oil Pressure, Engine Coolant Temp, Tachometer, Engine Hour Meter, Trip Odometer and Trip Computer
- HVAC -inc: Console Ducts- Illuminated Front Cupholder- Illuminated Rear Cupholder
- Instrument Panel Bin, Dashboard Storage, Driver / Passenger And Rear Door Bins
- Interior Trim -inc: Metal-Look Instrument Panel Insert, Metal-Look Door Panel Insert, Metal-Look Console Insert and Metal-Look Interior Accents
- Leather Steering Wheel- Locking Glove Box
- Manual Adjustable Front Head Restraints and Foldable Rear Head Restraints
- Manual Tilt/Telescoping Steering Column- Outside Temp Gauge- Perimeter Alarm
- Power 1st Row Windows w/Driver And Passenger 1-Touch Down
- Power Door Locks w/Autolock Feature- Power Rear Windows
- Premium Cloth Low-Back Bucket Seats - Proximity Key For Push Button Start Only

- Redundant Digital Speedometer
- Remote Keyless Entry w/Integrated Key Transmitter, Illuminated Entry and Panic Button
- Sentry Key Engine Immobilizer- Smart Device Integration- Systems Monitor
- Trip Computer- Urethane Gear Shifter Material
- Voice Activated Dual Zone Front Automatic Air Conditioning

---

## Exterior

- Tailgate/Rear Door Lock Included w/Power Door Locks- Tires: LT285/70R17C BSW A/T
- Variable Intermittent Wipers- Wheels: 17" x 7.5" Granite Crystal Aluminum
- Tailgate Rear Cargo Access- Steel Spare Wheel- Removable Rear Window
- Regular Box Style- Manual Convertible Top w/Fixed Roll-Over Protection
- Galvanized Steel/Aluminum Panels- Full-Size Spare Tire Stored Underbody w/Crankdown
- Front Fog Lamps- Deep Tinted Glass- Clearcoat Paint w/Badging
- Body-Color Grille w/Colored Accents- Black Wheel Well Trim and Black Fender Flares
- Black Side Windows Trim- Black Rear Bumper w/2 Tow Hooks
- Black Power Heated Side Mirrors w/Manual Folding- Black Front Bumper w/2 Tow Hooks
- Black Door Handles
- Auto On/Off Aero-Composite Halogen Daytime Running Headlamps w/Delay-Off

---

## Safety

- 2 12V DC Power Outlets- 2 12V DC Power Outlets and 1 120V AC Power Outlet
- 2 Seatback Storage Pockets
- 4-Way Passenger Seat -inc: Manual Recline and Fore/Aft Movement
- 6-Way Driver Seat -inc: Manual Recline, Height Adjustment, Fore/Aft Movement and Manual Lumbar Support
- 60-40 Folding Split-Bench Front Facing Fold Forward Seatback Premium Cloth Rear Seat
- 97 mph Maximum Speed Calibration- Air Filtration- Analog Appearance- Compass
- Cruise Control w/Steering Wheel Controls- Day-Night Rearview Mirror
- Delayed Accessory Power
- Driver And Passenger Visor Vanity Mirrors w/Driver And Passenger Illumination
- Fade-To-Off Interior Lighting- Front And Rear Map Lights
- Front Center Armrest w/Storage
- Front Seats w/Cloth Back Material and Manual Driver Lumbar
- Full Carpet Floor Covering -inc: Carpet Front And Rear Floor Mats
- Full Floor Console w/Locking Storage, 2 12V DC Power Outlets and 1 120V AC Power Outlet
- Garage Door Transmitter
- Gauges -inc: Speedometer, Odometer, Voltmeter, Oil Pressure, Engine Coolant Temp, Tachometer, Engine Hour Meter, Trip Odometer and Trip Computer
- HVAC -inc: Console Ducts- Illuminated Front Cupholder- Illuminated Rear Cupholder
- Instrument Panel Bin, Dashboard Storage, Driver / Passenger And Rear Door Bins
- Interior Trim -inc: Metal-Look Instrument Panel Insert, Metal-Look Door Panel Insert, Metal-Look Console Insert and Metal-Look Interior Accents
- Leather Steering Wheel- Locking Glove Box
- Manual Adjustable Front Head Restraints and Foldable Rear Head Restraints
- Manual Tilt/Telescoping Steering Column- Outside Temp Gauge- Perimeter Alarm
- Power 1st Row Windows w/Driver And Passenger 1-Touch Down
- Power Door Locks w/Autolock Feature- Power Rear Windows
- Premium Cloth Low-Back Bucket Seats- Proximity Key For Push Button Start Only
- Redundant Digital Speedometer
- Remote Keyless Entry w/Integrated Key Transmitter, Illuminated Entry and Panic Button
- Sentry Key Engine Immobilizer- Smart Device Integration- Systems Monitor
- Trip Computer- Urethane Gear Shifter Material
- Voice Activated Dual Zone Front Automatic Air Conditioning

---

## Mechanical

- 1200# Maximum Payload- 22 Gal. Fuel Tank- 220 Amp Alternator
- 4-Wheel Disc Brakes w/4-Wheel ABS, Front And Rear Vented Discs, Brake Assist and Hill Hold Control
- 4.10 Rear Axle Ratio- 50 State Emissions
- 650CCA Maintenance-Free Battery w/Run Down Protection- 7 Skid Plates
- Auto Locking Hubs- Brake Actuated Limited Slip Differential
- Class II Towing Equipment -inc: Hitch and Trailer Sway Control
- Driver Selectable Front Locking Differential - Driver Selectable Rear Locking Differential
- Electro-Hydraulic Power Assist Steering- Engine Auto Stop-Start Feature
- Engine Oil Cooler- Engine: 3.6L V6 24V VVT UPG I w/ESS
- Fox Brand Name Shock Absorbers
- Front Active w/Driver Control Anti-Roll Bar and Rear Anti-Roll Bar
- GVWR: 6,250 lbs w/Max Tow Package- Leading Link Front Suspension w/Coil Springs
- Manual Transfer Case- Part-Time Four-Wheel Drive- Performance Suspension
- Single Stainless Steel Exhaust- Trailer Wiring Harness

## Option Packages

### Factory Installed Packages

---

#### ENGINE: 3.0L V6 TURBO DIESEL W/ESS G3

-inc: ABS 4-Wheel HD Disc Brakes w/Front FNC, Auxiliary Battery, Selective Catalytic Reduction (Urea), Non-Lock Fuel Cap w/Discriminator, Supplemental Heater, 19 Gallon Fuel Tank, Stop-Start Dual Battery System, GVWR: 6,450 lbs, 3.73 Rear Axle Ratio

**\$4,000**

---

#### TRANSMISSION: 8-SPEED AUTOMATIC (8HP75)

-inc: Tip Start, Transmission Skid Plate, Selec-Speed Control

**\$2,000**

---

#### 8.4" RADIO & PREMIUM AUDIO GROUP

-inc: Emergency/Assistance Call, SiriusXM Traffic Plus, Alpine Premium Audio System, HD Radio, Radio: Uconnect 4C Nav w/8.4" Display, Rear View Auto Dim Mirror, For Details, Visit DriveUconnect.com, 1-Year SiriusXM Guardian Trial, 5-Year SiriusXM Travel Link Service, 5-Year SiriusXM Traffic Service, SiriusXM Travel Link

**\$1,995**

---

#### AUXILIARY SWITCH GROUP

-inc: 700 Amp Maintenance Free Battery, 240 Amp Alternator, Auxiliary Switches

**\$295**

---

#### BLACK 3-PIECE HARD TOP

-inc: Freedom Panel Storage Bag, Rear Window Defroster, Rear Sliding Window

**\$1,495**

---

#### COLD WEATHER GROUP

-inc: Heated Steering Wheel, Heated Front Seats

**\$995**

---

#### SAFETY GROUP

-inc: ParkSense Rear Park Assist System, Blind Spot & Cross Path Detection

**\$995**

---

#### TRAILER TOW PACKAGE

-inc: Trailer Hitch Zoom, Class IV Hitch Receiver, Heavy Duty Engine Cooling, 240 Amp Alternator

**\$395**

---

#### QUICK ORDER PACKAGE 26R

-inc: Engine: 3.0L V6 Turbo Diesel w/ESS G3, Transmission: 8-Speed Automatic (8HP75)

---

#### Option Packages Total

**\$12,170**

---

Texas Vehicle Exchange

[tveauto.com](https://tveauto.com)

972-242-5350

1724 Luna Road

Carrollton, TX 75006

© 2023 AutoRevo - All rights reserved. - Powered by [AutoRevo](#)