

2015 CHEVROLET CORVETTE STINGRAY 2LT LIKE NEW ONLY 7K MILES BUY IT NOW !

View this car on our website at njtruckking.com/6981277/ebrochure



Our Price **\$54,900**

Specifications:

Year:	2015
VIN:	1G1YD2D70F5116586
Make:	CHEVROLET CORVETTE STINGRAY
Model/Trim:	2LT LIKE NEW ONLY 7K MILES BUY IT NOW !
Condition:	Pre-Owned
Body:	Coupe
Exterior:	Shark Gray Metallic
Engine:	ENGINE, 6.2L (376 CI) V8 DI
Interior:	Red Leather
Transmission:	TRANSMISSION, 8-SPEED PADDLE SHIFT WITH AUTOMATIC MODES
Mileage:	7,996
Drivetrain:	Rear Wheel Drive
Economy:	City 16 / Highway 29

BUY IT NOW !

LIKE NEW C7 CORVETTE !

2015 CORVETTE STINGRAY COUPE

~2LT~

(ONLY 7,996 ACTUAL/ ORIGINAL MILES)

BEST COLOR COMBO ! (SHARK GRAY METALLIC EXTERIOR
WITH ADRENALINE RED INTERIOR)

FULLY REMOVABLE CARBON FIBER TARGA TOP PAINTED TO
MATCH

CARBON FIBER HOOD PAINTED TO MATCH

8 SPEED PADDLE SHIFT AUTOMATIC TRANSMISSION

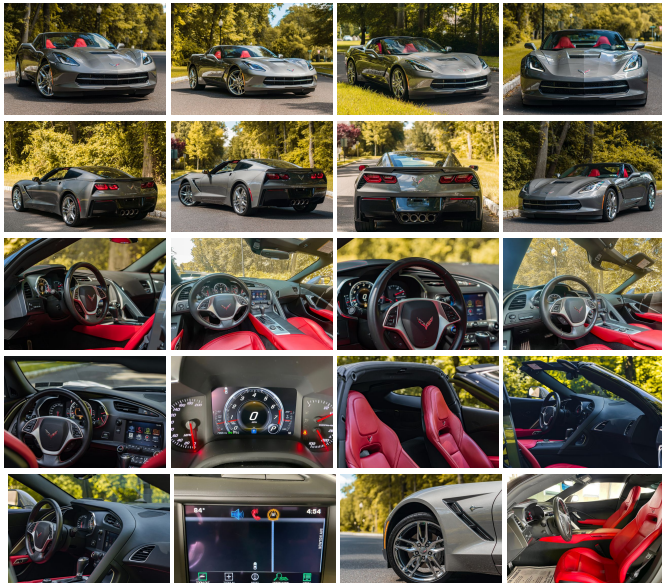
AUTOMATIC START

MULTI-MODE EXHAUST

PREMIUM BOSE AUDIO WITH SURROUND SOUND

HEADS-UP DISPLAY

HEATED & COOLED SEATS



CALL/TEXT AARON FOR MORE INFO 856-693-9370 !

Factory Installed Packages

- Console, floor 2 covered cup holders, auxiliary power outlet, USB ports, SD card slot, auxiliary input jack and storage
- Door locks, power programmable with lockout protection- Floor mats, carpeted
- Keyless Access with push button start and 2 remote transmitters that enable automatic door unlock and open by touching door switch
- Luggage shade
- Memory Package, recalls 2 driver "presets" for 8-way power seat, outside mirrors and tilt/telescoping steering column
- Perforated Mulan leather seating surfaces- Seats, GT bucket
- Steering column, power tilt and telescopic
- Theft-deterrent system, body security content and unauthorized entry electrical
- Theft-deterrent system, vehicle, push button start, immobilizer and audible visual alarm
- 2LT interior trim seats, console and door armrests in interior color selected
- Air conditioning, dual-zone automatic climate control with individual climate settings for driver and dedicated passenger controls and outside temperature display
- Air filtration system with pollen filter- Cargo net
- Cruise control, electronic with set and resume speed - Defogger, rear-window, electric
- Driver Information Center, color- Hatch release, push button open
- Head-Up Display with color readouts for street mode, track mode with g-meter, vehicle speed, engine rpm
- Lighting, interior with courtesy, cargo and glovebox
- Mirror, inside rearview auto-dimming, frameless- Oil life monitoring system
- Seat adjusters, driver and passenger 8-way
- Seat adjusters, power bolster and power lumbar
- Seats, heated and vented driver and passenger
- Steering wheel controls, audio, voice recognition and Driver Information Center
- Steering wheel, 3-spoke leather-wrapped
- Storage, with electric locking glovebox, behind screen storage, center console and rear compartment with cover
- Universal Home Remote includes garage door opener, 3-channel programmable, located on driver visor
- Visors, driver and passenger illuminated vanity mirrors
- Windows, power with driver and passenger Express-Down/Up

Exterior

- Tires, P245/40ZR18 front and P285/35ZR19 rear, performance, summer-only, run flat
- Wheels, 5-spoke, Silver-painted aluminum 18" x 8.5" (45.7 cm x 21.6 cm), front and 19" x 10.0 " (48.3 cm x 25.4 cm), rear
- Chrome Badge Package- Engine access, rear-opening hood
- Glass, Solar-Ray light-tinted
- Headlamps, high intensity discharge (HID), Xenon, LED park and turn signals and Daytime Running Lamps
- Mirrors, outside heated power-adjustable and driver-side auto-dimming, body- color
- Roof panel, carbon fiber, painted body-color, removable- Wipers, front intermittent

Safety

- Console, floor 2 covered cup holders, auxiliary power outlet, USB ports, SD card slot, auxiliary input jack and storage
- Door locks, power programmable with lockout protection- Floor mats, carpeted
- Keyless Access with push button start and 2 remote transmitters that enable automatic door unlock and open by touching door switch
- Luggage shade
- Memory Package, recalls 2 driver "presets" for 8-way power seat, outside mirrors and tilt/telescoping steering column
- Perforated Mulan leather seating surfaces- Seats, GT bucket
- Steering column, power tilt and telescopic
- Theft-deterrent system, body security content and unauthorized entry electrical
- Theft-deterrent system, vehicle, push button start, immobilizer and audible visual alarm
- 2LT interior trim seats, console and door armrests in interior color selected
- Air conditioning, dual-zone automatic climate control with individual climate settings for driver and dedicated passenger controls and outside temperature display
- Air filtration system with pollen filter- Cargo net
- Cruise control, electronic with set and resume speed - Defogger, rear-window, electric
- Driver Information Center, color- Hatch release, push button open
- Head-Up Display with color readouts for street mode, track mode with g-meter, vehicle speed, engine rpm
- Lighting, interior with courtesy, cargo and glovebox
- Mirror, inside rearview auto-dimming, frameless- Oil life monitoring system
- Seat adjusters, driver and passenger 8-way
- Seat adjusters, power bolster and power lumbar
- Seats, heated and vented driver and passenger
- Steering wheel controls, audio, voice recognition and Driver Information Center
- Steering wheel, 3-spoke leather-wrapped
- Storage, with electric locking glovebox, behind screen storage, center console and rear

ENGINE, 6.2L (376 CI) V8 DI
(455 hp [339.3 kW] @ 6000 rpm, 460 lb-ft of
torque [621.0 N-m] @ 4600 rpm)

TRANSMISSION, 8-SPEED PADDLE SHIFT WITH AUTOMATIC
MODES

\$1,725

Option Packages Total

\$1,725

- Storage, with electric locking glovebox, behind screen storage, center console and rear compartment with cover
- Universal Home Remote includes garage door opener, 3-channel programmable, located on driver visor
- Visors, driver and passenger illuminated vanity mirrors
- Windows, power with driver and passenger Express-Down/Up

Mechanical

- Rear axle, 3.42 ratio, limited slip
 - Transmission, 7-speed manual with Active Rev Matching
 - Brakes, 4-wheel antilock, 4-wheel disc- Calipers, Dark Gray Metallic-painted
 - Engine, 6.2L (376 ci) V8 DI (455 hp [339.3 kW] @ 6000 rpm, 460 lb-ft of torque [621.0 N-m] @ 4600 rpm)
 - Exhaust, aluminized stainless-steel with 3" polished stainless-steel tips
 - Frame, aluminum, structure- Rear wheel drive
 - Steering, power, speed-sensitive rack-and-pinion, variable ratio
 - Suspension, 4-wheel independent
-

King of Cars and Trucks

njtruckking.com

856-693-3181

1229 Broadway

Westville, New Jersey 08093

© 2024 AutoRevo - All rights reserved. - Powered by [AutoRevo](#)