



2007 Chevrolet Silverado 1500 LT

Our Price \$10,995

View this vehicle on our website at lemanzmotors.com

Lemanz Motors

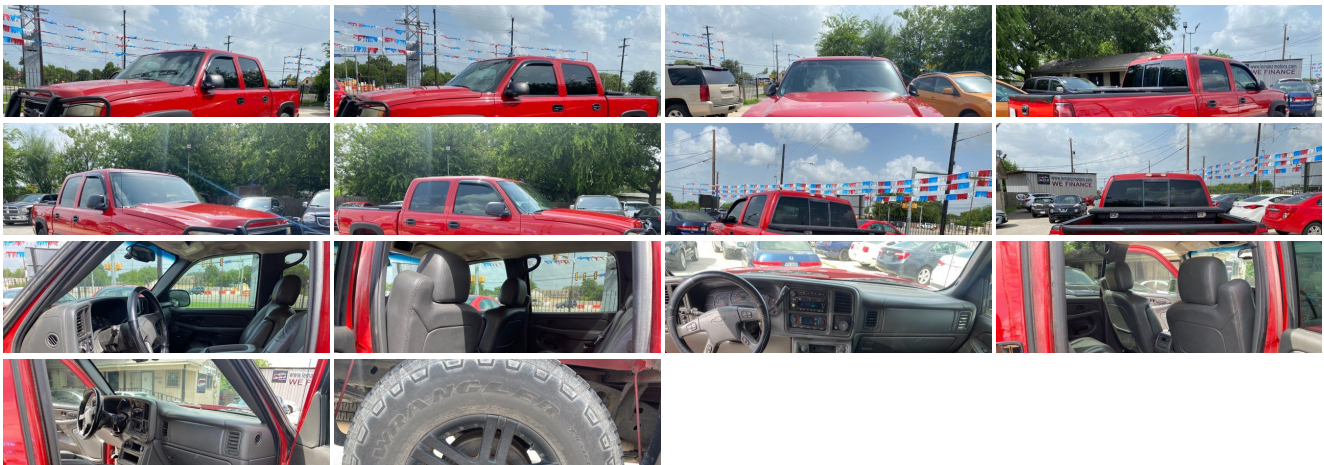
(210) 401-2886

5507 Enrique M Barrera Pkwy , San Antonio, TX 78227

Photos

Details

Contact



Specifications:

Year:

2007

VIN:	2GCEC13N471153585
Make:	Chevrolet
Model/Trim:	Silverado 1500 LT
Condition:	Pre-Owned
Body:	Pickup Truck
Exterior:	Victory Red
Engine:	ENGINE, VORTEC HIGH-OUTPUT 6.0L V8 MFI
Interior:	Medium Gray Leather
Mileage:	201,000
Drivetrain:	Rear Wheel Drive
Economy:	City 14 / Highway 19

Vehicle Description

Installed Options	Option Packages
<div>Interior</div> <div><ul style="list-style-type: none">- Audio system controls, rear with 2 headphone jacks (headphones not included), power outlet and controls for volume, station selection and media (Requires Crew Cab models.)- Audio system, AM/FM stereo with 6-disc CD changer, seek-and-scan, digital clock, auto-tone control, Radio Data System (RDS), speed-compensated volume, and TheftLock- Console, overhead mini with map lights (Not available with (CF5) power sunroof.)- Door locks, power- Lighting, interior with dome and reading lights, illuminated entry feature and backlit instrument panel switches- Power outlets, 2 auxiliary instrument panel-mounted with covers, 12-volt- Remote Keyless Entry, with 2 transmitters, panic button and content theft alarm- Seat adjuster, driver 6-way power (With (AN3) front full-feature bucket seats, includes 10-way power seat adjusters.)- Seat adjuster, front passenger 10-way power (Included and only available with (AN3) front full-feature bucket seats.)- Seat trim, leather (Not available on Regular Cab models. Extended Cab models include front leather seating surfaces with rear vinyl bench. Crew Cab models include front and rear leather-appointed seating surfaces.)- Seats, front bucket, includes 10-way power driver and front passenger seat adjusters, 2-way power lumbar control, heated seat cushions and seatbacks, 2-position driver memory, adjustable outboard head restraints, floor console, dual inboard armrests and storage pockets- Steering wheel controls, mounted audio and Driver Information Center controls which provides access to enhanced Driver Information Center feature and information- Air conditioning, dual-zone automatic climate control with individual climate settings for driver and right-front passenger- Assist handle, front passenger (Also includes outboard rear assist handle on Extended or Crew Cab models.)- Audio system feature, Bose premium speaker system with sub-woofer in center console- Cigarette lighter, on instrument panel- Coat hook, driver-side rear (Also includes passenger-side coat hook on Extended and Crew Cab models.)- Console, floor with storage compartment and dual cup holders- Cruise control, electronic with set and resume speed- Cup holders, front (Also includes rear cupholders on Extended and Crew Cab models.)- Defogger, rear-window electric (Not available with (A28) sliding rear window.)- Driver Information Center that monitors numerous different systems depending on vehicle equipment- Floor covering, color-keyed carpeting with rubberized vinyl floor mats (Extended and Crew Cab models also include rear floor mats)- Instrumentation, analog with speedometer, odometer with trip odometer, fuel level, voltmeter, engine temperature, oil pressure and tachometer- Mirror, inside rearview auto-dimming with 8-point compass and outside temperature display- Seats, rear full-width bench, 3-passenger, folding (includes child seat top tether anchor)- Steering column, Tilt-Wheel, adjustable with brake/transmission shift interlock- Steering wheel, leather-wrapped, Black with theft-deterrent locking feature- Theft-deterrent system, vehicle, PASSlock II- Visors, driver and front passenger, padded with cloth trim, extenders, pocket on driver-side and vanity mirror on passenger-side, Shale-colored- Warning tones, headlamp on, key-in-ignition, driver and passenger buckle up reminder</div>	<div>Factory Installed Packages</div> <div><div>ENGINE, VORTEC HIGH-OUTPUT 6.0L V8 MFI</div><div>(345 hp [257.0 kW] @ 5200 rpm, 380 lb-ft of torque [513.0 N-m] @ 4000 rpm)</div></div>

and turn signal on

- Windows, power with driver and front passenger Express-Down

Exterior

- Daytime Running Lamps, with automatic exterior lamp control
- Glass, Solar-Ray deep-tinted (all windows except light-tinted glass on windshield and driver- and front passenger-side glass) (With Extended Cab models, includes rear window and rear quarter windows. With Crew Cab models or (C49) rear-window defogger, includes light-tinted rear window.)
- Headlamps, dual halogen composite with automatic exterior lamp control and flash-to-pass feature
- Mirrors, outside heated power-adjustable, power-folding and driver-side auto-dimming, Black with integrated turn signal indicators (Upgradeable to (DPN) outside vertical camper mirrors. Includes curb-tilt when (UK3) steering-wheel mounted audio controls is ordered.)
- Air dam, Gray- Bumper, front chrome with Gray lower
- Bumper, rear chrome, step-style with pad- Fog lamps, front, halogen
- Grille, chrome surround with black insert- Lamps, dual cargo area lamps
- Moldings, bodyside (Moldings are body-colored with chrome insert, see Color and Trim chart for compatibility.)
- Paint, solid- Wipers, front intermittent wet-arm with pulse washers

Safety

- Audio system controls, rear with 2 headphone jacks (headphones not included), power outlet and controls for volume, station selection and media (Requires Crew Cab models.)
- Audio system, AM/FM stereo with 6-disc CD changer, seek-and-scan, digital clock, auto-tone control, Radio Data System (RDS), speed-compensated volume, and TheftLock
- Console, overhead mini with map lights (Not available with (CF5) power sunroof.)
- Door locks, power
- Lighting, interior with dome and reading lights, illuminated entry feature and backlit instrument panel switches
- Power outlets, 2 auxiliary instrument panel-mounted with covers, 12-volt
- Remote Keyless Entry, with 2 transmitters, panic button and content theft alarm
- Seat adjuster, driver 6-way power (With (AN3) front full-feature bucket seats, includes 10-way power seat adjusters.)
- Seat adjuster, front passenger 10-way power (Included and only available with (AN3) front full-feature bucket seats.)
- Seat trim, leather (Not available on Regular Cab models. Extended Cab models include front leather seating surfaces with rear vinyl bench. Crew Cab models include front and rear leather-appointed seating surfaces.)
- Seats, front bucket, includes 10-way power driver and front passenger seat adjusters, 2-way power lumbar control, heated seat cushions and seatbacks, 2-position driver memory, adjustable outboard head restraints, floor console, dual inboard armrests and storage pockets
- Steering wheel controls, mounted audio and Driver Information Center controls which provides access to enhanced Driver Information Center feature and information
- Air conditioning, dual-zone automatic climate control with individual climate settings for driver and right-front passenger
- Assist handle, front passenger (Also includes outboard rear assist handle on Extended or Crew Cab models.)
- Audio system feature, Bose premium speaker system with sub-woofer in center console
- Cigarette lighter, on instrument panel
- Coat hook, driver-side rear (Also includes passenger-side coat hook on Extended and Crew Cab models.)
- Console, floor with storage compartment and dual cup holders
- Cruise control, electronic with set and resume speed
- Cup holders, front (Also includes rear cupholders on Extended and Crew Cab models.)
- Defogger, rear-window electric (Not available with (A28) sliding rear window.)
- Driver Information Center that monitors numerous different systems depending on vehicle equipment
- Floor covering, color-keyed carpeting with rubberized vinyl floor mats (Extended and Crew Cab models also include rear floor mats)
- Instrumentation, analog with speedometer, odometer with trip odometer, fuel level, voltmeter, engine temperature, oil pressure and tachometer
- Mirror, inside rearview auto-dimming with 8-point compass and outside temperature display
- Seats, rear full-width bench, 3-passenger, folding (includes child seat top tether anchor)
- Steering column, Tilt-Wheel, adjustable with brake/transmission shift interlock
- Steering wheel, leather-wrapped, Black with theft-deterrent locking feature
- Theft-deterrent system, vehicle, PASSlock II
- Visors, driver and front passenger, padded with cloth trim, extenders, pocket on driver-side and vanity mirror on passenger-side, Shale-colored
- Warning tones, headlamp on, key-in-ignition, driver and passenger buckle up reminder and turn signal on
- Windows, power with driver and front passenger Express-Down

Mechanical

- Brakes, 4-wheel antilock, front disc/rear drum
- Engine, Vortec 5.3L V8 SFI FlexFuel (295 hp [219.7 kW] @ 5200 rpm, 335 lb-ft of torque [452.3 N-m] @ 4000 rpm) (Requires C*15*03, C*15543, C*15753 or C*15953 Models. - Standard on CC15753, C*15543 and C*15953 Models.)
- Tire, full-size spare, 17" (43.2 cm) steel, located at rear underbody of vehicle
- Tires, P245/70R17 all-season, blackwall (Requires 2WD models.)
- Transmission, 4-speed automatic, electronically controlled with overdrive and tow/haul mode
- Wheels, 4 - 17" x 7.5" (43.2 cm x 19.1 cm) 6-lug polished cast aluminum, includes steel spare
- Alternator, 145 amps
- Battery, heavy-duty 600 cold-cranking amps, maintenance-free with rundown protection and retained accessory power
- Exhaust, aluminized stainless-steel muffler and tailpipe
- Frame, hydroformed ladder-type
- GVWR, 6900 lbs. (3130 kg) (Requires CC15543 models or CK15953 models and (LM7) Vortec 5.3L V8 SFI engine.)
- Pickup box, Fleetside- Rear wheel drive- Recovery hooks, front, frame-mounted
- Steering, power
- Suspension Package, Handling/Trailer, includes 36mm piston monotube shocks (Standard on C*15553 and C*15543 models.)
- Suspension, front independent (2WD models include coil springs. 4x4 models include torsion bars.)
- Suspension, rear 3-stage springs (Standard on Crew Cab models only.)
- Tire carrier, outside spare, winch-type mounted under frame at rear
- Tools, mechanical jack and wheel wrench located in back of cab

Lemanz Motors

Lemanz Motors

View this car on our website at lemanzmotors.com/6980455

Website: lemanzmotors.com

Phone: (210) 401-2886

Map: [5507 Enrique M Barrera Pkwy, San Antonio, TX 78227](#)



