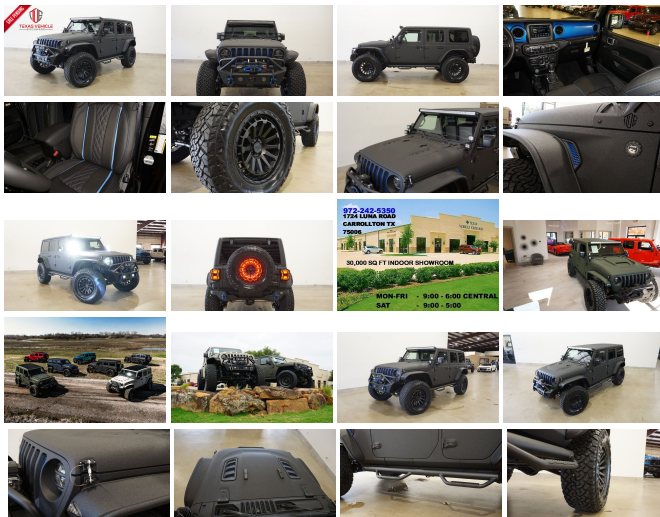


2021 Jeep Wrangler Unlimited Sport 4X4 DUPONT KEVLAR,LIFTED,LED'S,20'S

View this car on our website at tveauto.com/6980084/ebrochure



Our Price **\$74,900**

Specifications:

Year:	2021
VIN:	1C4HJXDG5MW705766
Make:	Jeep
Stock:	705766
Model/Trim:	Wrangler Unlimited Sport 4X4 DUPONT KEVLAR,LIFTED,LED'S,20'S
Condition:	Pre-Owned
Body:	SUV
Exterior:	Black
Engine:	ENGINE: 3.6L V6 24V VVT ETORQUE UPG I
Interior:	Black Leather
Transmission:	TRANSMISSION: 8-SPEED AUTOMATIC (850RE)
Mileage:	91
Drivetrain:	4 Wheel Drive
Economy:	City 17 / Highway 23

NATION WIDE FINANCING

SUBMIT CREDIT APP [WWW.TVEAUTO.COM](https://www.tveauto.com)

OR CALL 972-242-5350

"RAPTOR BLACK EDITION"

CUSTOM BUILT **KEVLAR** 2021 JEEP
WRANGLER JL UNLIMITED SPORT 4X4
WITH 25S PACKAGE

UPGRADES INCLUDE:

- * RAPTOR BLACK KEVLAR COATING WITH BLUE ACCENTS
- * CUSTOM ALEA BLACK LEATHER WITH BLUE STITCHING
- * FACTORY REMOTE START
- * COLD WEATHER GROUP
- * CONVENIENCE GROUP
- * FACTORY 7.0 INCH TOUCH SCREEN WITH AM/FM/SIRIUS STEREO
- * FACTORY BACK-UP CAMERA
- * U-CONNECT

- * FAB FOURS STUBBY FRONT BUMPER WITH LED FOGLIGHTS
- * FRONT D-RINGS & ISOLATORS (BLUE)
- * SMITTYBILT NEW GEN II "X20" 10,000 LB WATERPROOF AND WIRELESS CONTROL WINCH WITH SYNTHETIC ROPE
- * FACTOR 55 PROLINK (BLACK)
- * FACTORY MESH GRILLE PAINTED BLUE
- * FACTORY LED HEADLIGHTS
- * RUGGED RIDGE BLACK HEADLIGHT GUARDS
- * MOPAR 10TH ANNIVERSARY RUBICON POWER DOME HOOD
- * DRAKE OFF ROAD HOOD LATCHES
- * BUSHWACKER JL FLAT STYLE FENDERS
- * RUBICON EXPRESS 2.5" LIFT KIT WITH TERAFLX FALCON SHOCKS
- * TERAFLX FALCON STABILIZER KIT
- * SUSPENSION PARTS (PAINTED BLUE)
- * VOSWITCH 6 CHANNEL CUSTOM INTEGRATED SWITCH PANEL
- * 50" LED LIGHT BAR AND 4 RIGID INDUSTRIES D-SS DUALY SIDE SHOOTER

LED PILLAR LIGHTS

- * SMITTYBILT BLACK TUBULAR STEPS
- * MOPAR BLACK FUEL DOOR
- * EVOLUTION 2 BLACK LED TAIL LIGHTS
- * RUGGED RIDGE BLACK TAIL LIGHT GUARDS
- * RUGGED RIDGE SPARTACUS HD HINGE KIT
- * RUGGED RIDGE LED THIRD BRAKE LIGHT RING
- * DV8 OFF ROAD REAR BUMPER
- * REAR D-RINGS & ISOLATORS (BLUE)
- * ALL WEATHER FLOOR MATS
- * TAZER JL PROGRAMMER WITH SPEEDOMETER CALIBRATION
- * 20" BLACK RHINO MATTE BLACK "RAID" WHEELS
- * BRAND NEW VENOM POWER TERRA HUNTER X/T 37X13.50R/20 TIRES

WE BUILD EVERY JEEP WITH PRIDE! DO NOT HESITATE TO CALL US WITH THIS JEEP BUILD. WE CAN MAKE CHANGES TO THIS JEEP BUILD OR CUSTOM BUILD ANY JEEP TO YOUR PREFERENCE. GIVE US A CALL @ 972-242-5350 OR STOP BY FOR A TEST DRIVE. 1724 LUNA RD IN CARROLLTON - 2 MILES NORTH OF 635.

Our Location :



2021 Jeep Wrangler Unlimited Sport 4X4 DUPONT KEVLAR,LIFTED,LED'S,20'S
Texas Vehicle Exchange - 972-242-5350 - View this car on our website at veauto.com/6980084/ebrochure

Installed Options

Interior

- 6-Way Driver Seat -inc: Manual Recline, Height Adjustment, Fore/Aft Movement and Manual Lumbar Support
- Cloth Low-Back Bucket Seats
- Front Seats w/Cloth Back Material and Manual Driver Lumbar
- Full Carpet Floor Covering -inc: Carpet Front And Rear Floor Mats
- Gauges -inc: Speedometer, Odometer, Engine Coolant Temp, Tachometer, Engine Hour Meter, Trip Odometer and Trip Computer
- Manual Air Conditioning- Proximity Key For Push Button Start Only - Trip Computer
- 110 MPH Vehicle Max Speed Calibration- 2 12V DC Power Outlets
- 2 Seatback Storage Pockets
- 4-Way Passenger Seat -inc: Manual Recline and Fore/Aft Movement
- 60-40 Folding Split-Bench Front Facing Fold Forward Seatback Cloth Rear Seat
- Analog Appearance- Cargo Space Lights- Carpet Floor Trim, Carpet And Rubber Mat
- Compass- Cruise Control w/Steering Wheel Controls- Day-Night Rearview Mirror
- Delayed Accessory Power- Fade-To-Off Interior Lighting- Front And Rear Map Lights
- Front Center Armrest w/Storage
- Full Floor Console w/Locking Storage and 2 12V DC Power Outlets
- HVAC -inc: Console Ducts- Illuminated Front Cupholder- Illuminated Rear Cupholder
- Instrument Panel Bin, Dashboard Storage, Driver / Passenger And Rear Door Bins
- Interior Trim -inc: Metal-Look Instrument Panel Insert and Metal-Look Console Insert
- Locking Cargo Area Concealed Storage- Locking Glove Box
- Manual Adjustable Front Head Restraints and Foldable Rear Head Restraints
- Manual Tilt/Telescoping Steering Column- Outside Temp Gauge
- Redundant Digital Speedometer- Removable 3rd Row Windows
- Sentry Key Engine Immobilizer- Systems Monitor- Urethane Gear Shifter Material
- Vanity w/Driver And Passenger Auxiliary Mirror

Exterior

Option Packages

Factory Installed Packages

ENGINE: 3.6L V6 24V VVT ETORQUE UPG I	
-inc: 600 Amp Maintenance Free Battery, 48V Belt Starter Generator, GVWR: 5,460 lbs, Engine Oil Cooler, Delete Alternator	\$750
TRANSMISSION: 8-SPEED AUTOMATIC (850RE)	
-inc: Anti-Lock 4-Wheel Disc Brakes	\$2,500
BLACK 3-PIECE HARD TOP	
-inc: Freedom Panel Storage Bag, Rear Window Defroster, Rear Window Wiper/Washer, No Soft Top	\$1,495
COLD WEATHER GROUP	
-inc: Heated Steering Wheel, Heated Front Seats	\$995
CONVENIENCE GROUP	
-inc: Universal Garage Door Opener	\$595
TECHNOLOGY GROUP	
-inc: Google Android Auto, Selectable Tire Fill Alert, SiriusXM Satellite Radio, SiriusXM Radio Service, For More Info, Call 800-643-2112, USB Host Flip, Integrated Center Stack Radio, Air Conditioning w/Auto Temp Control, GPS Antenna Input, Cluster 7.0" TFT Color Display, 7.0" Touchscreen Display, Radio: Uconnect 4 w/7" Display, Apple CarPlay, Air Filtering	\$995

- Black Front Bumper w/2 Tow Hooks- Black Rear Bumper w/1 Tow Hook
- Front Fog Lamps- Manual Convertible Top w/Fixed Roll-Over Protection
- Wheels: 17" x 7.5" Tech Silver Aluminum
- Aero-Composite Halogen Headlamps w/Delay-Off- Black Door Handles
- Black Fender Flares- Black Side Windows Trim- Body-Colored Grille- Clearcoat Paint
- Conventional Rear Cargo Access- Deep Tint Sunscreen Windows
- Full-Size Spare Tire Mounted Outside Rear
- Galvanized Steel/Aluminum/Magnesium Panels- Non-Lock Fuel Cap w/o Discriminator
- Removable Rear Window- Tires: 245/75R17 All Season- Variable Intermittent Wipers

Safety

- 6-Way Driver Seat -inc: Manual Recline, Height Adjustment, Fore/Aft Movement and Manual Lumbar Support
- Cloth Low-Back Bucket Seats
- Front Seats w/Cloth Back Material and Manual Driver Lumbar
- Full Carpet Floor Covering -inc: Carpet Front And Rear Floor Mats
- Gauges -inc: Speedometer, Odometer, Engine Coolant Temp, Tachometer, Engine Hour Meter, Trip Odometer and Trip Computer
- Manual Air Conditioning- Proximity Key For Push Button Start Only - Trip Computer
- 110 MPH Vehicle Max Speed Calibration- 2 12V DC Power Outlets
- 2 Seatback Storage Pockets
- 4-Way Passenger Seat -inc: Manual Recline and Fore/Aft Movement
- 60-40 Folding Split-Bench Front Facing Fold Forward Seatback Cloth Rear Seat
- Analog Appearance- Cargo Space Lights- Carpet Floor Trim, Carpet And Rubber Mat
- Compass- Cruise Control w/Steering Wheel Controls- Day-Night Rearview Mirror
- Delayed Accessory Power- Fade-To-Off Interior Lighting- Front And Rear Map Lights
- Front Center Armrest w/Storage
- Full Floor Console w/Locking Storage and 2 12V DC Power Outlets
- HVAC -inc: Console Ducts- Illuminated Front Cupholder- Illuminated Rear Cupholder
- Instrument Panel Bin, Dashboard Storage, Driver / Passenger And Rear Door Bins
- Interior Trim -inc: Metal-Look Instrument Panel Insert and Metal-Look Console Insert
- Locking Cargo Area Concealed Storage- Locking Glove Box
- Manual Adjustable Front Head Restraints and Foldable Rear Head Restraints
- Manual Tilt/Telescoping Steering Column- Outside Temp Gauge
- Redundant Digital Speedometer- Removable 3rd Row Windows
- Sentry Key Engine Immobilizer- Systems Monitor- Urethane Gear Shifter Material
- Vanity w/Driver And Passenger Auxiliary Mirror

Mechanical

- 4-Wheel Disc Brakes w/4-Wheel ABS, Front Vented Discs, Brake Assist and Hill Hold Control
- Engine: 3.6L V6 24V VVT UPG I w/ESS - Transmission: 6-Speed Manual
- 1233# Maximum Payload- 180 Amp Alternator- 21.5 Gal. Fuel Tank- 3 Skid Plates
- 3.45 Rear Axle Ratio- 50 State Emissions
- 650CCA Maintenance-Free Battery w/Run Down Protection- Auto Locking Hubs
- Aux Battery- Brake Actuated Limited Slip Differential
- Electro-Hydraulic Power Assist Steering- Engine Oil Cooler
- Front And Rear Anti-Roll Bars- GVWR: 5,400 lbs- Gas-Pressurized Shock Absorbers
- Leading Link Front Suspension w/Coil Springs- Manual Transfer Case
- Normal Duty Suspension- Part-Time Four-Wheel Drive- Single Stainless Steel Exhaust
- Stop-Start Dual Battery System- Towing Equipment -inc: Trailer Sway Control
- Trailing Arm Rear Suspension w/Coil Springs

QUICK ORDER PACKAGE 25S SPORT S

-inc: Engine: 3.6L V6 24V VVT eTorque UPG I, Transmission: 8-Speed Automatic (850RE), Front 1-Touch Down Power Windows, Speed Sensitive Power Locks, Sport S, Power Heated Mirrors, Automatic Headlamps, Leather Wrapped Steering Wheel, Security Alarm, Remote Keyless Entry, Sun Visors w/Illuminated Vanity Mirrors

\$3,200

Option Packages Total

\$10,530

Texas Vehicle Exchange

tveauto.com

972-242-5350

1724 Luna Road

Carrollton, TX 75006

© 2024 AutoRevo - All rights reserved. - Powered by AutoRevo