



## 2011 Chevrolet Camaro 2SS

**Website Price \$24,995**

View this vehicle on our website at [autoparkdallas.com](http://autoparkdallas.com)



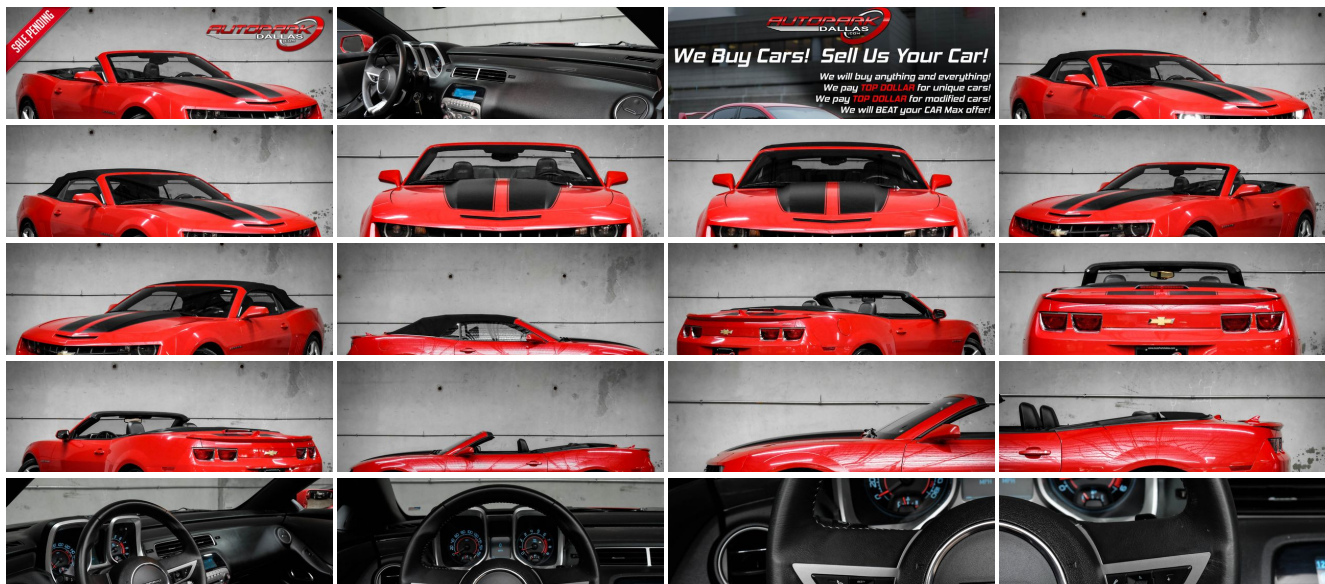
(214) 945-2601

2061 S Stemmons Fwy , Lewisville, TX 75067

Photos

Details

Contact



## Specifications:

<b>Year:</b>	2011
<b>VIN:</b>	<a href="#">2G1FK3DJ9B9201793</a>
<b>Make:</b>	Chevrolet
<b>Model/Trim:</b>	Camaro 2SS
<b>Condition:</b>	Pre-Owned
<b>Body:</b>	Convertible
<b>Exterior:</b>	Victory Red
<b>Engine:</b>	ENGINE, 6.2L V8 SFI
<b>Interior:</b>	Black Leather
<b>Transmission:</b>	TRANSMISSION, 6-SPEED AUTOMATIC
<b>Mileage:</b>	62,312
<b>Drivetrain:</b>	Rear Wheel Drive
<b>Economy:</b>	City 16 / Highway 25

## Vehicle Description

AutoPark Dallas is thrilled to offer you this Convertible Victory 2011 Chevrolet Camaro 2SS for sale! Generations of Americans grew up with the Chevrolet Camaro and many can say its gone through MANY generational changes, this 2011 being the Generation where Big & Aggressive became the need! This Camaro is powered by the reliable 6.2L V8 engine that pumps 426 horses stock and the flag ship aspect being that new look body style that once again provides us consumers with a unique look to this age old muscle cars. Even better is our Camaro here at APD is a drop-top convertible giving you that sense of freedom on those beautiful 'gotta take cruise' type of days! A piece of American Muscle legacy and a blast of a daily driver, come check out this Camaro parked in our indoor 16,000 Sq Ft Showroom located in Dallas , Texas amongst our inventory of 100+ other Performance / Modified and Luxury cars!

---

### 2011 Chevrolet Camaro 2SS

**\* 1 OWNER !\***

**\* Clean CarFax !\***

**\* RS Package !\***

Victory Red Exterior

Black Soft-Top Convertible

Black Leather Interior

Bluetooth

Heated Front Row Seats

Remote Start-Up

Factory BREMBO Brakes

Digital Heads-Up Display

Single-Zone Air Conditioning

Cruise Control

Powered Convertible Top

Daytime Running Lights

CD & AUX Capable

Steering Wheel Mounted Controls

Manual Mode w/ Paddle Shifters

BOSTON Premium Audio System

6.2L V8 SFI Engine

6-Speed Automatic Transmission

Rear Wheel Drive

Professionally Detailed!

Well Maintained!

\* Free CarFax Report !\*

AND SO MUCH MORE!!!

---

## Financing is available!

Check out our Payment Calculator to get an estimate on your monthly payments!

OR

Get pre-approved in no time by filling out a credit application on the 'Finance' section of our website!

We also offer MANY different Extended Warranty options!

---

Check out our Google Reviews by \*Clicking\* this LINK!

Referrals and Testimonials is what our business is built on!

---

The team here at AutoPark Dallas, is dedicated to offering a level of customer service not usually found in the automobile industry. Thanks to years of extensive car buying / selling experience, we pursue quality used and new vehicles that are hand-picked from factory sources. Our love for automobiles and dislike of traditional dealership tactics is what motivates us to provide the service we do! The pride we take in continuing this service long after the vehicle has been delivered is what we strive for! Looking forward to making every effort to see that our customer is completely satisfied and a friend for life!

Pre-purchase inspections are always welcomed!

We also offer airport pick-up, competitive financing options, free CarFax Reports, Car Shipping nationwide, Extended Warranty plans, and so much more!

Trade-In(s) are always accepted or sell us your used car (MODIFIED OR NOT)! Please call or text for more information about Trade-Ins or selling your car to us @ (214) 945-2601!

---

#(214) 945-2601

Call or Text **Anytime!**

Se habla Español

**WE BUY CARS!**

WWW.AUTOPARKDALLAS.COM

### Installed Options

#### Interior

- Air conditioning, single-zone manual- Air filtration system with pollen filter

### Option Packages

#### Factory Installed Packages

- Compass, located in Driver Information Center - Console, floor, with armrest
- Cruise control, electronic with set and resume speed, steering wheel mounted
- Cup holders, 2 front- Dead pedal, driver- Defogger, rear-window, electric
- Door locks, power programmable with lockout protection- Floor mats, carpeted front
- Gauges, auxiliary, multi-function includes 4 gauges: oil pressure, battery voltage, oil temperature and transmission fluid temperature, mounted on center console forward of shifter
- Glovebox, lockable
- Head-Up Display with digital readouts for vehicle speed, selected gear, audio system information, high-beam indicator, compass, outside air temperature, turn signals, tachometer, vehicle messages, Turn-by-Turn information and phone information
- Instrumentation, analog with Driver Information Center display and SS detail, includes speedometer, tachometer, fuel gauge and engine temperature gauge
- Lighting, front reading lamps- Map pockets, front doors
- Mirror, inside rearview autodimming
- Power outlets, 2 auxiliary 1 located in center console storage area and 1 located at front of center console
- Remote Keyless Entry
- Seat adjuster, driver, 6-way power (fore/aft, up/down, tilt) with power recliner
- Seat adjuster, front passenger 2-way manual (fore/aft) with power recliner
- Seat trim, leather-appointed front seats
- Seats, front Sport bucket includes adjustable head restraints and fixed rear seat (Includes passenger-side seatback map pocket.)
- Seats, heated driver and front passenger - Shift knob, leather-wrapped
- Sill plate, Chevrolet- Steering column, manual rake and telescopic
- Steering wheel, 3-spoke leather-wrapped- Theft-deterrent system, PASS-Key III
- Trunk release, remote, located on driver-side
- Universal Home Remote includes garage door opener, 3-channel programmable
- Visors, driver and front passenger vanity mirrors
- Windows, power with driver and passenger Express-Down/Up

### Exterior

- Tires, P245/45R20 front and P275/40R20 rear, blackwall, summer
- Wheels, 20" x 8" (50.8 cm x 20.3 cm) front and 20" x 9" (50.8 cm x 22.9 cm) rear flangeless, painted aluminum with sterling silver finish (Midnight Silver finish when (WRS) RS Package is ordered. Included with (AJA) Synergy Series Special Edition or (AJB) Synergy Series Special Edition 2.)
- Convertible top, power folding includes glass rear window with integral defogger
- Door handles, body-color
- Fascias, front and rear body-color, SS-specific with unique front grille and rear diffuser, lower extension and front air scoop
- Fog lamps (When (WRS) RS Package is ordered, fog lamps act as Daytime Running Lamps.)
- Headlamps, halogen composite with automatic exterior lamp control
- Hood blanket with debossed Chevrolet bowtie
- Mirrors, outside heated power-adjustable and driver-side auto-dimming, body-color
- Moldings, body-color lower rocker
- Spare tire and wheel, not desired tire sealant and inflator kit in place of spare tire
- Spoiler, rear- Tire sealant and inflator kit in place of spare tire - Tonneau cover
- Wipers, front intermittent

### Safety

- Air conditioning, single-zone manual- Air filtration system with pollen filter
- Compass, located in Driver Information Center - Console, floor, with armrest
- Cruise control, electronic with set and resume speed, steering wheel mounted
- Cup holders, 2 front- Dead pedal, driver- Defogger, rear-window, electric
- Door locks, power programmable with lockout protection- Floor mats, carpeted front
- Gauges, auxiliary, multi-function includes 4 gauges: oil pressure, battery voltage, oil temperature and transmission fluid temperature, mounted on center console forward of shifter
- Glovebox, lockable
- Head-Up Display with digital readouts for vehicle speed, selected gear, audio system information, high-beam indicator, compass, outside air temperature, turn signals, tachometer, vehicle messages, Turn-by-Turn information and phone information
- Instrumentation, analog with Driver Information Center display and SS detail, includes speedometer, tachometer, fuel gauge and engine temperature gauge
- Lighting, front reading lamps- Map pockets, front doors
- Mirror, inside rearview autodimming
- Power outlets, 2 auxiliary 1 located in center console storage area and 1 located at front of center console
- Remote Keyless Entry
- Seat adjuster, driver, 6-way power (fore/aft, up/down, tilt) with power recliner
- Seat adjuster, front passenger 2-way manual (fore/aft) with power recliner
- Seat trim, leather-appointed front seats

### ENGINE, 6.2L V8 SFI

(400 hp [298.3 kW] @ 5900 rpm, 410 lb-ft of torque [553.5 N-m] @ 4300 rpm)

### TRANSMISSION, 6-SPEED AUTOMATIC

includes TAPshift manual shift controls on steering wheel **\$1,185**

### HEADLAMPS, HIGH INTENSITY DISCHARGE

with automatic exterior lamp control

### REMOTE VEHICLE STARTER SYSTEM

includes Remote Keyless Entry

### RS PACKAGE

includes (Q9K) 20" x 8" front and 20" x 9" rear flangeless, painted aluminum wheels with Midnight Silver finish, (T4F) high intensity discharge headlamps and RS unique tail lamps **\$1,300**

### TAIL LAMPS, RS UNIQUE

### AXLE, 3.27 RATIO

### EMISSIONS, FEDERAL REQUIREMENTS

### VICTORY RED

### STANDARD PAINT

### 2SS PREFERRED EQUIPMENT GROUP

includes Standard Equipment

### AUDIO SYSTEM, AM/FM STEREO WITH CD-ROM AND MP3 PLAYBACK

music navigator, Graphic Information Display (GID) and auxiliary input jack, includes outside temperature display

### BLACK, LEATHER-APPOINTED FRONT SEATS

### SEATS, FRONT SPORT BUCKET

includes adjustable head restraints and fixed rear seat

### BLACK TOP

### WHEELS, 20" X 8" (50.8 CM X 20.3 CM) FRONT AND 20" X 9" (50.8 CM X 22.9 CM) REAR POLISHED ALUMINUM

**\$470**

### Option Packages Total

**\$2,955**

- Seats, front Sport bucket includes adjustable head restraints and fixed rear seat (includes passenger-side seatback map pocket.)
- Seats, heated driver and front passenger - Shift knob, leather-wrapped
- Sill plate, Chevrolet- Steering column, manual rake and telescopic
- Steering wheel, 3-spoke leather-wrapped- Theft-deterrent system, PASS-Key III
- Trunk release, remote, located on driver-side
- Universal Home Remote includes garage door opener, 3-channel programmable
- Visors, driver and front passenger vanity mirrors
- Windows, power with driver and passenger Express-Down/Up

## Mechanical

- Transmission, 6-speed manual- Alternator, 150 amps- Axle, 3.45 ratio
- Battery, maintenance-free with rundown protection and retained accessory power
- Brakes, 4-wheel antilock, 4-wheel disc (Brembo performance 4 piston front and 4 piston rear brakes.)
- Differential, limited slip
- Engine, 6.2L V8 SFI (426 hp [317.6 kW] @ 5900 rpm, 420 lb-ft of torque [567.0 N-m] @ 4600 rpm) (Requires (MN6) 6-speed manual transmission.)
- Exhaust, dual-outlet stainless-steel with polished tips- Rear wheel drive
- Steering, power, variable ratio- Suspension, Performance



Auto Park Dallas

View this car on our website at [autoparkdallas.com/6978699](http://autoparkdallas.com/6978699)

Website: [autoparkdallas.com](http://autoparkdallas.com)

Phone: (214) 945-2601

Map: [2061 S Stemmons Fwy, Lewisville, TX 75067](#)

