



2017 GMC Acadia SLT

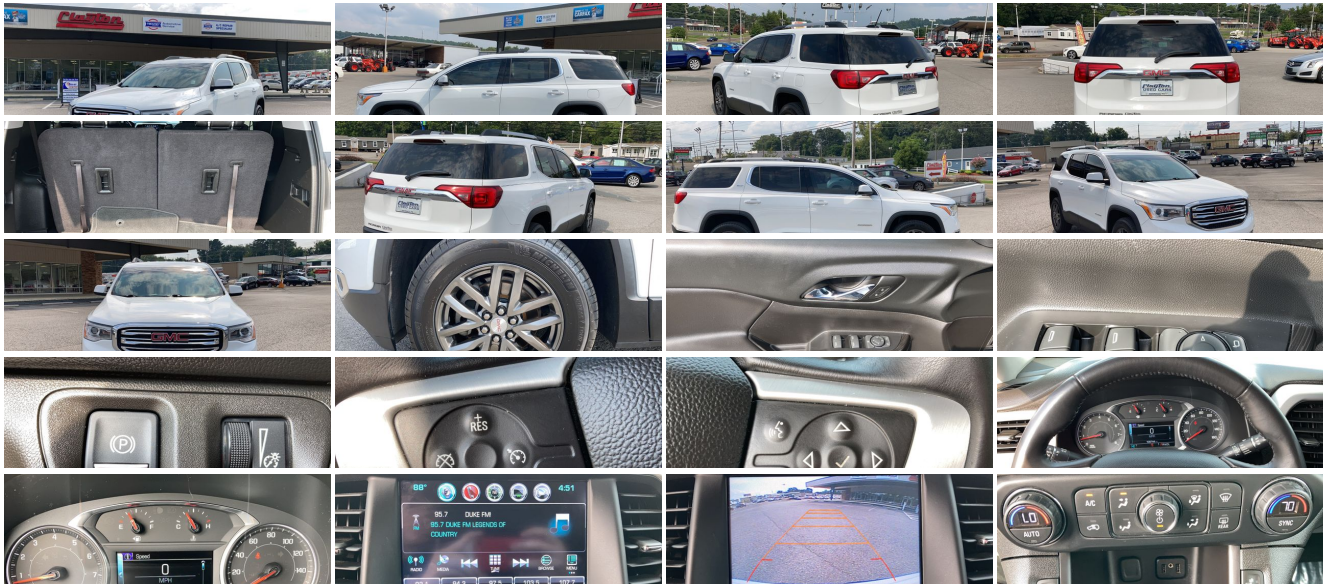
View this vehicle on our website at claytonautos.com



(865) 688-5440

4701 Clinton Highway, Knoxville, TN 37912

- Photos
- Details
- Contact



Specifications:

Year: 2017
VIN: 1GKKNMLS7HZ226725
Make: GMC

Stock:	3153G1
Model/Trim:	Acadia SLT
Condition:	Pre-Owned
Body:	SUV
Exterior:	Summit White
Engine:	ENGINE, 3.6L V6, SIDI, DOHC
Mileage:	116,773
Drivetrain:	Front Wheel Drive
Economy:	City 18 / Highway 25

Vehicle Description

Installed Options

Interior

- Cruise control, electronic with set and resume speed
- Door locks, power programmable with lockout protection
- Floor mats, carpeted front and second row - Keyless open and start
- Reclining front buckets- Remote Keyless Entry, extended range
- Seat adjuster, driver 8-way power- Seat adjuster, power driver lumbar control
- Seating, 6-passenger (2-2-2 seating configuration)
- Steering wheel, leather-wrapped with mounted audio and cruise controls
- Air conditioning, tri-zone automatic climate control with individual climate settings for driver, right front passenger and rear seat occupants
- Compass display
- Console front center with 2 cup holders and storage, includes rear storage drawer
- Cup holders 2 in front center console, 2 in front door panel, 2 bottle holders in front door panel, 2 in 2nd row and 2 in 3rd row, 10 total
- Defogger, rear-window electric
- Display, driver instrument information enhanced, multi-color
- Lamp Package, interior, deluxe
- Lighting, interior with theater dimming, cargo compartment, reading lights for front seats, second row reading lamps integrated into dome light, door-and tailgate-activated switches and illuminated entry and exit feature
- Mirror, inside rearview auto-dimming
- Power outlet, 120-volt, 3-prong household style located on the rear of center console
- Remote vehicle start- Seat adjuster, front passenger, 8-way power
- Seat adjuster, power passenger lumbar control
- Seats, heated driver and front passenger - Sensor, humidity and windshield temperature
- Steering column, tilt and telescopic
- Universal Home Remote includes garage door opener, 3-channel programmable
- Windows, power with driver and passenger Express-down

Exterior

- Tires, P235/65R18 all-season, H-rated, blackwall
- Wheels, 4 - 18" x 7.5" (45.7 cm x 19.1 cm) aluminum - Fog lamps, front projector type
- Glass, deep-tinted (all windows, except light-tinted glass on windshield and driver- and front passenger-side glass)
- Grille, front shutters, active upper and lower (Standard on TND26 model only.)
- Headlamps, projector beam- Liftgate, power programmable
- Mirrors, outside heated power-adjustable and driver-side auto-dimming, body-color, manual folding
- Roof rails, Silver- Tire, compact spare, T135/70R18, blackwall
- Wheel, spare, 18" x 4.5" (45.7 cm x 11.4 cm) steel
- Wiper, rear intermittent with washer- Wipers, front intermittent with washers

Safety

- Cruise control, electronic with set and resume speed
- Door locks, power programmable with lockout protection
- Floor mats, carpeted front and second row - Keyless open and start
- Reclining front buckets- Remote Keyless Entry, extended range
- Seat adjuster, driver 8-way power- Seat adjuster, power driver lumbar control
- Seating, 6-passenger (2-2-2 seating configuration)
- Steering wheel, leather-wrapped with mounted audio and cruise controls

Option Packages

Factory Installed Packages

ENGINE, 3.6L V6, SIDI, DOHC with Variable Valve Timing (VVT) (310 hp [231.1 kW] @ 6600 rpm, 271 lb-ft of torque @ 5000 rpm [365.9 N-m])	\$1,095
--	---------

Option Packages Total	\$1,095
-----------------------	---------

- Air conditioning, tri-zone automatic climate control with individual climate settings for driver, right front passenger and rear seat occupants
- Compass display
- Console front center with 2 cup holders and storage, includes rear storage drawer
- Cup holders 2 in front center console, 2 in front door panel, 2 bottle holders in front door panel, 2 in 2nd row and 2 in 3rd row, 10 total
- Defogger, rear-window electric
- Display, driver instrument information enhanced, multi-color
- Lamp Package, interior, deluxe
- Lighting, interior with theater dimming, cargo compartment, reading lights for front seats, second row reading lamps integrated into dome light, door-and tailgate-activated switches and illuminated entry and exit feature
- Mirror, inside rearview auto-dimming
- Power outlet, 120-volt, 3-prong household style located on the rear of center console
- Remote vehicle start- Seat adjuster, front passenger, 8-way power
- Seat adjuster, power passenger lumbar control
- Seats, heated driver and front passenger - Sensor, humidity and windshield temperature
- Steering column, tilt and telescopic
- Universal Home Remote includes garage door opener, 3-channel programmable
- Windows, power with driver and passenger Express-down

Mechanical

- Engine, 2.5L DOHC 4-cylinder SIDI with Variable Valve Timing (VVT) (193 hp [145 kW] @ 6300, 188 lb-ft of torque @ 4400 rpm [256.5 N-m]) (Standard on TND26 FWD model only.)
 - Transmission, 6-speed automatic (Included with (LCV) 2.5L 4-cylinder engine.)
 - Alternator, 150 amps (Standard on TND26 FWD model only.)- Axle, 3.87 ratio
 - Brakes, 4-wheel antilock, 4-wheel disc, 17" front and rear
 - Drive Mode Selector up to 5 modes available for various driving conditions
 - E10 Fuel capable
 - Engine control, stop-start system (Included with (LCV) 2.5L DOHC 4-cylinder engine.)
 - Exhaust, single outlet (Standard on TND26 FWD model only.)- Front wheel drive
 - GVWR, 6001 lbs (2722 kg)
 - Suspension, Ride and Handling McPherson struts for front and independent 5-link rear
 - Tool kit, road emergency
-



Clayton Autos Inc

View this car on our website at claytonautos.com/6978452

Website: claytonautos.com

Phone: (865) 688-5440

Map: 4701 Clinton Highway, Knoxville, TN 37912

