



4025 Lindbergh Dr, Addison, TX 75001

(214) 945 2601

## 2006 Chevrolet Corvette

Website Price \$23,995

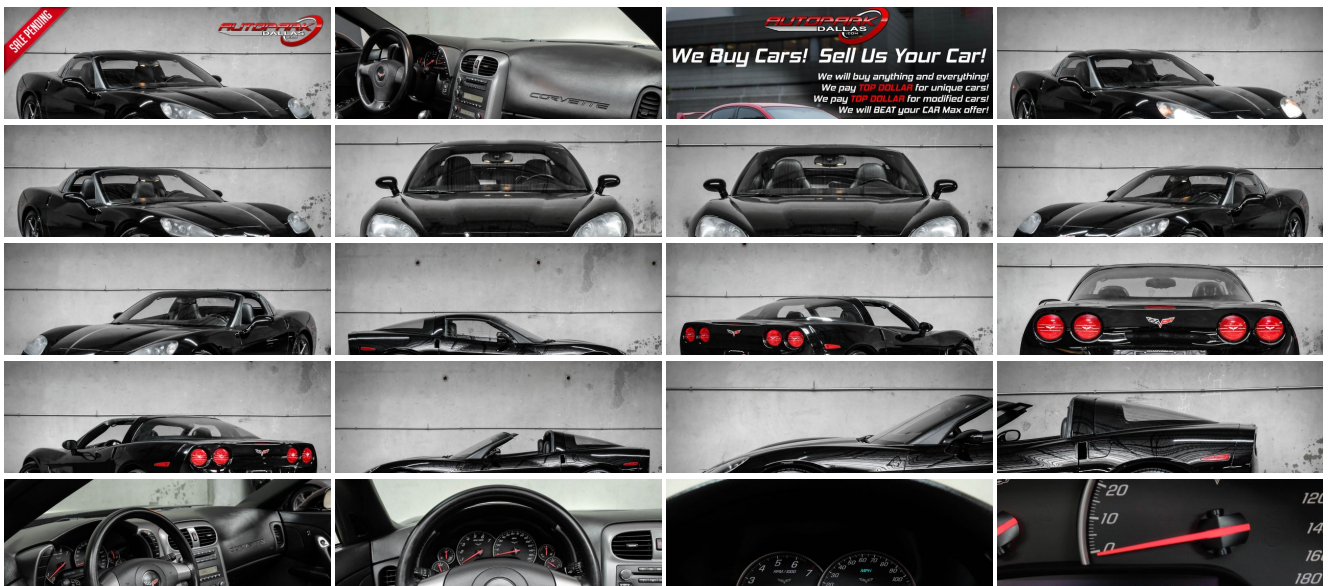
View this vehicle on our website at [autoparkdallas.com](http://autoparkdallas.com)



(214) 945-2601

2061 S Stemmons Fwy , Lewisville, TX 75067

- Photos
- Details
- Contact



## Specifications:

|                      |   |
|----------------------|---|
| <b>Year:</b>         | 2006                                      |
| <b>VIN:</b>          | <a href="#">1G1YY25U865116215</a>         |
| <b>Make:</b>         | Chevrolet                                 |
| <b>Model/Trim:</b>   | Corvette                                  |
| <b>Condition:</b>    | Pre-Owned                                 |
| <b>Body:</b>         | Coupe                                     |
| <b>Exterior:</b>     | Black                                     |
| <b>Engine:</b>       | ENGINE, 6.0L V8 SFI                       |
| <b>Interior:</b>     | Ebony Leather                             |
| <b>Transmission:</b> | TRANSMISSION, 6-SPEED MANUAL, SHORT-THROW |
| <b>Mileage:</b>      | 92,441                                    |
| <b>Drivetrain:</b>   | Rear Wheel Drive                          |
| <b>Economy:</b>      | City 17 / Highway 27                      |

## Vehicle Description

AutoPark Dallas is thrilled to offer you this 2006 Chevrolet Corvette for sale! There is not a soul that does not know the Corvette, with its signature look and being a low-profile sport car. These bald eagle screaming U.S. born beauties are a thrill to drive and always stand out in any crowded car meet or parking lot. If you're looking for a American Sports Car, then come swing by and check out this Corvette parked in our indoor 16,000 Sq Ft Showroom located in Dallas , Texas amongst our inventory of 100+ other Performance / Modified and Luxury cars!

---

### 2006 Chevrolet Corvette

Black Exterior

Color-Matching Removable T-Top

Ebony Black Leather Interior

Dual Climate Controls

Push Button Start

Comfort Access Keyless Entry

Daytime Running Lights

6.0L V8 SFI Engine

6-Speed Manual Transmission

Rear Wheel Drive

Professionally Detailed!

Well Maintained!

**\* Free CarFax Report !\***

AND SO MUCH MORE!!!

---

## Financing is available!

Check out our Payment Calculator to get an estimate on your monthly payments!

**OR**

Get pre-approved in no time by filling out a credit application on the 'Finance' section of our website!

We also offer MANY different Extended Warranty options!

Check out our Google Reviews by \*Clicking\* this LINK!

Referrals and Testimonials is what our business is built on!

The team here at AutoPark Dallas, is dedicated to offering a level of customer service not usually found in the automobile industry. Thanks to years of extensive car buying / selling experience, we pursue quality used and new vehicles that are hand-picked from factory sources. Our love for automobiles and dislike of traditional dealership tactics is what motivates us to provide the service we do! The pride we take in continuing this service long after the vehicle has been delivered is what we strive for! Looking forward to making every effort to see that our customer is completely satisfied and a friend for life!

Pre-purchase inspections are always welcomed!

We also offer airport pick-up, competitive financing options, free CarFax Reports, Car Shipping nationwide, Extended Warranty plans, and so much more!

Trade-In(s) are always accepted or sell us your used car (MODIFIED OR NOT)! Please call or text for more information about Trade-Ins or selling your car to us @ (214) 945-2601!

#(214) 945-2601

Call or Text **Anytime!**

Se habla Español

**WE BUY CARS!**

WWW.AUTOPARKDALLAS.COM

## Installed Options

### Interior

- Air conditioning, dual-zone, automatic, includes individual climate settings for driver and right front passenger, automatic climate control and outside temperature display
- Air filtration, includes pollen filter - Antenna, integral, hidden
- Console, floor, lockable, includes 2 covered cupholders, ashtray with cigar lighter, auxiliary power outlet and CD storage
- Cruise control, electronic with set and resume speed - Defogger, rear-window, electric
- Door locks, power, programmable, includes lockout protection- Floor mats, carpeted
- Hatch release, push button open (Includes power hatch pulldown.)
- Instrumentation, analog, electronic, includes Driver Information Center with 2 line display
- Keyless Access, with push-button start, includes 2 remote transmitters which enable automatic door unlock and open by touching door switch
- Lighting, interior, courtesy, cargo and glovebox
- Mirror, inside rearview, manual day/night, includes dual reading lights
- Oil life monitoring system- Seat adjuster, power, driver 6-way
- Seats, front bucket with leather seating surfaces, includes back angle adjustment
- Sound system, ETR AM/FM stereo with CD player and MP3 playback, includes Radio Data System, seek-and-scan, digital clock, auto-tone control, automatic volume, Theftlock and (U66) Sound system feature, 7-speaker system
- Steering column, manual, Tilt-Wheel- Steering wheel, leather-wrapped, smaller, 3-spoke
- Storage, includes lockable glovebox, center console and 2 rear compartments with covers
- Theft-deterrent system, push button start, immobilizer and audible visual alarm
- Tire Pressure Monitor System, air pressure sensors in each tire, pressure display in Driver Information Center
- Visors, illuminated vanity mirrors, driver and front passenger
- Windows, power, includes driver and passenger express-down

### Exterior

## Option Packages

### Factory Installed Packages

#### ENGINE, 6.0L V8 SFI

(400 HP [298.3 kW] @ 6000 rpm, 400 lb.-ft.  
[542.8 N-m] @ 4400 rpm)

#### TRANSMISSION, 6-SPEED MANUAL, SHORT-THROW

(Includes (GU6) Axle, 3.42 ratio.)

#### AXLE, 3.42 RATIO, LIMITED SLIP

#### EMISSIONS, FEDERAL REQUIREMENTS

#### SOLID PAINT

#### PREFERRED EQUIPMENT GROUP

includes Standard Equipment

#### SOUND SYSTEM, ETR AM/FM STEREO WITH CD PLAYER AND MP3 PLAYBACK

includes Radio Data System, seek-and-scan,  
digital clock, auto-tone control, automatic  
volume, TheftLock and (U66) Sound system  
feature 7-speaker system

#### HIGHWEAR NUANCE LEATHER SEAT TRIM

- Daytime running lamps- Fog lamps, front, integral in fascia- Glass, Solar-Ray light tinted
- Headlamps, dual projector lamps, xenon high-intensity discharge low-beam, tungsten-halogen high-beam, includes automatic exterior lamp control
- Mirrors, outside rearview, power, heated, body-color
- Roof panel, removable, 1-piece, body-color- Wipers, intermittent, front

## Safety

- Air conditioning, dual-zone, automatic, includes individual climate settings for driver and right front passenger, automatic climate control and outside temperature display
- Air filtration, includes pollen filter - Antenna, integral, hidden
- Console, floor, lockable, includes 2 covered cupholders, ashtray with cigar lighter, auxiliary power outlet and CD storage
- Cruise control, electronic with set and resume speed - Defogger, rear-window, electric
- Door locks, power, programmable, includes lockout protection- Floor mats, carpeted
- Hatch release, push button open (Includes power hatch pulldown.)
- Instrumentation, analog, electronic, includes Driver Information Center with 2 line display
- Keyless Access, with push-button start, includes 2 remote transmitters which enable automatic door unlock and open by touching door switch
- Lighting, interior, courtesy, cargo and glovebox
- Mirror, inside rearview, manual day/night, includes dual reading lights
- Oil life monitoring system- Seat adjuster, power, driver 6-way
- Seats, front bucket with leather seating surfaces, includes back angle adjustment
- Sound system, ETR AM/FM stereo with CD player and MP3 playback, includes Radio Data System, seek-and-scan, digital clock, auto-tone control, automatic volume, Theftlock and (U66) Sound system feature, 7-speaker system
- Steering column, manual, Tilt-Wheel- Steering wheel, leather-wrapped, smaller, 3-spoke
- Storage, includes lockable glovebox, center console and 2 rear compartments with covers
- Theft-deterrent system, push button start, immobilizer and audible visual alarm
- Tire Pressure Monitor System, air pressure sensors in each tire, pressure display in Driver Information Center
- Visors, illuminated vanity mirrors, driver and front passenger
- Windows, power, includes driver and passenger express-down

## Mechanical

- Wheels, 5-spoke silver painted aluminum, 18" x 8.5" (45.7 cm x 21.6 cm), front and 19" x 10.0" (48.3 cm x 25.4 cm), rear
- Active handling, improves traction and enhances vehicle stability
- Axle, 3.42 ratio, limited slip (Included and only available with (MN6) Transmission, 6-speed manual.)
- Brakes, 4-wheel antilock, 4-wheel disc
- Engine access, rear opening hood, includes underhood lamp
- Engine, 6.0L V8 SFI (400 HP [298.3 kW] @ 6000 rpm, 400 lb.-ft. [542.8 N-m] @ 4400 rpm)
- Exhaust, aluminized stainless-steel with polished 3" stainless-steel tips
- Fuel capacity, approximate, 18 gallon (68 liters)- Rear wheel drive
- Steering, power, speed-sensitive, rack and pinion
- Suspension, 4-wheel independent, includes transverse fiberglass leaf springs
- Tires, front P245/40ZR18, extended mobility, Eagle F1
- Tires, rear P285/35ZR19, extended mobility, Eagle F1 - Traction control, all-speed
- Transmission, 6-speed manual, short-throw (Includes (GU6) Axle, 3.42 ratio.)

SEATS, FRONT BUCKET WITH LEATHER SEATING SURFACES  
includes back angle adjustment



Auto Park Dallas

View this car on our website at [autoparkdallas.com/6976526](http://autoparkdallas.com/6976526)

Website: [autoparkdallas.com](http://autoparkdallas.com)

Phone: (214) 945-2601

Map: 2061 S Stemmons Fwy, Lewisville, TX 75067

