



2006 Chevrolet Corvette w/ 3LT & Transparent Roof Package!

Website Price \$23,995

View this vehicle on our website at autoparkdallas.com



(214) 945-2601

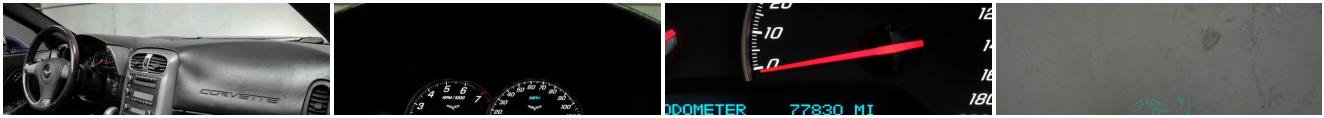
2061 S Stemmons Fwy, Lewisville, TX 75067

Photos

Details

Contact





Specifications:

Year:	2006
VIN:	1G1YY26U065128969
Make:	Chevrolet
Model/Trim:	Corvette w/ 3LT & Transparent Roof Package!
Condition:	Pre-Owned
Body:	Coupe
Exterior:	LeMans Blue Metallic
Engine:	ENGINE, 6.0L V8 SFI
Interior:	Ebony Leather
Transmission:	TRANSMISSION, 6-SPEED PADDLE SHIFT WITH AUTOMATIC MODES
Mileage:	77,835
Drivetrain:	Rear Wheel Drive
Economy:	City 17 / Highway 27

Vehicle Description

AutoPark Dallas is thrilled to offer you this LeMans Blue Metallic 2006 Chevrolet Corvette with 3LT & Transparent Roof Package for sale! Rolling around in Chevrolet's most notorious color, LeMans Blue Metallic, this Corvette is a beauty that stands out thanks to that Blue and Black Exterior Combo! Thanks to the 3LT Package you even get all the extra amenities straight from the factory that gives your some extra comfort! If you are looking for a C6, then this is the one to have! DO! NOT! HESITATE!!! To come swing by and check out this Corvette parked here in our indoor 16,000 Sq Ft Showroom located in Dallas , Texas amongst our inventory of 100+ other Performance / Modified and Luxury cars!

2006 Chevrolet Corvette

*** 2 Set of Keys !***

*** BEAUTIFUL FACTORY COLOR !***

LeMans Blue Metallic Exterior

Removable Transparent T-Top

Ebony Black Leather Interior

Heated Seats

Dual Climate Controls

Push Button Start

Comfort Access Keyless Entry

Daytime Running Lights

6.0L V8 SFI Engine

6-Speed Manual Transmission

Rear Wheel Drive

Professionally Detailed!

Well Maintained!

*** Free CarFax Report !***

AND SO MUCH MORE!!!

Financing is available!

Check out our Payment Calculator to get an estimate on your monthly payments!

OR

Get pre-approved in no time by filling out a credit application on the 'Finance' section of our website!

We also offer MANY different Extended Warranty options!

Check out our Google Reviews by *Clicking* this LINK!

Referrals and Testimonials is what our business is built on!

The team here at AutoPark Dallas, is dedicated to offering a level of customer service not usually found in the automobile industry. Thanks to years of extensive car buying / selling experience, we pursue quality used and new vehicles that are hand-picked from factory sources. Our love for automobiles and dislike of traditional dealership tactics is what motivates us to provide the service we do! The pride we take in continuing this service long after the vehicle has been delivered is what we strive for! Looking forward to making every effort to see that our customer is completely satisfied and a friend for life!

Pre-purchase inspections are always welcomed!

We also offer airport pick-up, competitive financing options, free CarFax Reports, Car Shipping nationwide, Extended Warranty plans, and so much more!

Trade-In(s) are always accepted or sell us your used car (MODIFIED OR NOT)! Please call or text for more information about Trade-Ins or selling your car to us @ (214) 945-2601!

#(214) 945-2601

Call or Text **Anytime!**

Se habla Español

WE BUY CARS!

WWW.AUTOPARKDALLAS.COM

Installed Options

Interior

- Air conditioning, dual-zone, automatic, includes individual climate settings for driver and right front passenger, automatic climate control and outside temperature display
- Air filtration, includes pollen filter - Antenna, integral, hidden
- Console, floor, lockable, includes 2 covered cupholders, ashtray with cigar lighter, auxiliary power outlet and CD storage
- Cruise control, electronic with set and resume speed - Defogger, rear-window, electric
- Door locks, power, programmable, includes lockout protection- Floor mats, carpeted
- Hatch release, push button open (Includes power hatch pull-down.)
- Instrumentation, analog, electronic, includes Driver Information Center with 2 line display
- Keyless Access, with push-button start, includes 2 remote transmitters which enable automatic door unlock and open by touching door switch
- Lighting, interior, courtesy, cargo and glovebox
- Mirror, inside rearview, manual day/night, includes dual reading lights

Option Packages

Factory Installed Packages

ENGINE, 6.0L V8 SFI

(400 HP [298.3 kW] @ 6000 rpm, 400 lb.-ft.
[542.8 N-m] @ 4400 rpm)

TRANSMISSION, 6-SPEED PADDLE SHIFT WITH AUTOMATIC MODES

(Includes (GM8) Axle, 2.56 ratio.)

\$1,250

AIR BAGS, FRONTAL AND SIDE IMPACT, DRIVER AND FRONT PASSENGER WITH PASSENGER SIDE SUPPRESSION

(Always use safety belts and proper child restraints, even with air bags. See the Owners

- Oil life monitoring system- Seat adjuster, power, driver 6-way
- Seats, front bucket with leather seating surfaces, includes back angle adjustment
- Sound system, ETR AM/FM stereo with CD player and MP3 playback, includes Radio Data System, seek-and-scan, digital clock, auto-tone control, automatic volume, Theftlock and (U66) Sound system feature, 7-speaker system
- Steering column, manual, Tilt-Wheel- Steering wheel, leather-wrapped, smaller, 3-spoke
- Storage, includes lockable glovebox, center console and 2 rear compartments with covers
- Theft-deterrent system, push button start, immobilizer and audible visual alarm
- Tire Pressure Monitor System, air pressure sensors in each tire, pressure display in Driver Information Center
- Visors, illuminated vanity mirrors, driver and front passenger
- Windows, power, includes driver and passenger express-down

Exterior

- Daytime running lamps- Fog lamps, front, integral in fascia- Glass, Solar-Ray light tinted
- Headlamps, dual projector lamps, xenon high-intensity discharge low-beam, tungsten-halogen high-beam, includes automatic exterior lamp control
- Mirrors, outside rearview, power, heated, body-color
- Roof panel, removable, 1-piece, body-color- Wipers, intermittent, front

Safety

- Air conditioning, dual-zone, automatic, includes individual climate settings for driver and right front passenger, automatic climate control and outside temperature display
- Air filtration, includes pollen filter - Antenna, integral, hidden
- Console, floor, lockable, includes 2 covered cupholders, ashtray with cigar lighter, auxiliary power outlet and CD storage
- Cruise control, electronic with set and resume speed - Defogger, rear-window, electric
- Door locks, power, programmable, includes lockout protection- Floor mats, carpeted
- Hatch release, push button open (Includes power hatch pull-down.)
- Instrumentation, analog, electronic, includes Driver Information Center with 2 line display
- Keyless Access, with push-button start, includes 2 remote transmitters which enable automatic door unlock and open by touching door switch
- Lighting, interior, courtesy, cargo and glovebox
- Mirror, inside rearview, manual day/night, includes dual reading lights
- Oil life monitoring system- Seat adjuster, power, driver 6-way
- Seats, front bucket with leather seating surfaces, includes back angle adjustment
- Sound system, ETR AM/FM stereo with CD player and MP3 playback, includes Radio Data System, seek-and-scan, digital clock, auto-tone control, automatic volume, Theftlock and (U66) Sound system feature, 7-speaker system
- Steering column, manual, Tilt-Wheel- Steering wheel, leather-wrapped, smaller, 3-spoke
- Storage, includes lockable glovebox, center console and 2 rear compartments with covers
- Theft-deterrent system, push button start, immobilizer and audible visual alarm
- Tire Pressure Monitor System, air pressure sensors in each tire, pressure display in Driver Information Center
- Visors, illuminated vanity mirrors, driver and front passenger
- Windows, power, includes driver and passenger express-down

Mechanical

- Transmission, 6-speed manual, short-throw (Includes (GU6) Axle, 3.42 ratio.)
- Wheels, 5-spoke silver painted aluminum, 18" x 8.5" (45.7 cm x 21.6 cm), front and 19" x 10.0" (48.3 cm x 25.4 cm), rear
- Active handling, improves traction and enhances vehicle stability
- Axle, 3.42 ratio, limited slip (Included and only available with (MN6) Transmission, 6-speed manual.)
- Brakes, 4-wheel antilock, 4-wheel disc
- Engine access, rear opening hood, includes underhood lamp
- Engine, 6.0L V8 SFI (400 HP [298.3 kW] @ 6000 rpm, 400 lb.-ft. [542.8 N-m] @ 4400 rpm)
- Exhaust, aluminized stainless-steel with polished 3" stainless-steel tips
- Fuel capacity, approximate, 18 gallon (68 liters) - Rear wheel drive
- Steering, power, speed-sensitive, rack and pinion
- Suspension, 4-wheel independent, includes transverse fiberglass leaf springs
- Tires, front P245/40ZR18, extended mobility, Eagle F1
- Tires, rear P285/35ZR19, extended mobility, Eagle F1 - Traction control, all-speed

... (See also the Owner's Manual for more safety information.)

HEAD-UP DISPLAY

includes dot-matrix readouts for street mode, track mode with g-meter, vehicle speed, engine rpm, and readings from key gauges including water temperature and oil pressure

MEMORY PACKAGE

2 driver settings, remembers "presets" for 6-way power seat, outside mirrors and telescoping steering column

ROOF PANEL, REMOVABLE, 1-PIECE, TRANSPARENT

(Included with (C2L) Roof Package.) **\$750**

SOUND SYSTEM FEATURE, XM SATELLITE RADIO

features 67 channels of 100% commercial-free music included in its over 150 channels of the best in music, news, sports, talk, comedy, XM Instant Traffic and Weather, and more. Digital quality sound with coast-to-coast signal coverage. Three trial months-no obligation.

UNIVERSAL HOME REMOTE

includes garage door opener, 3-channel programmable, located on driver visor

AXLE, 2.56 RATIO, LIMITED SLIP

EMISSIONS, FEDERAL REQUIREMENTS

SOLID PAINT

PREFERRED EQUIPMENT GROUP

includes (AJ7) Air bags, frontal and side impact, driver and front passenger, Cargo convenience net, in rear compartment area, (UV6) Head-Up Display, (UG1) Universal Home Remote, (D42) Luggage shade, (AAB) Memory Package, (DD0) Mirrors, inside rearview with compass and driver outside rearview, auto-dimming, (AG2) Seat adjuster, power, front passenger 6-way, (AQ9) Seats, front Sport bucket with leather seating surfaces, (KA1) Seats, heated, driver and passenger, (US9) Sound system, ETR AM/FM stereo with 6-disc, in dash CD changer, MP3 playback, (N37) Steering column, power telescopic, includes manual tilt, (U2K) Sound system feature, XM Satellite Radio **\$4,795**

SOUND SYSTEM, ETR AM/FM STEREO WITH 6-DISC, IN DASH CD CHANGER, MP3 PLAYBACK AND (U65) SOUND SYSTEM FEATURE, BOSE PREMIUM 7-SPEAKER SYSTEM

includes Radio Data System, seek-and-scan, digital clock, auto-tone control, automatic volume and TheftLock

HIGHWEAR NUANCE LEATHER SEAT TRIM

SEATS, FRONT SPORT BUCKET WITH LEATHER SEATING SURFACES

includes back angle adjustment, adjustable lumbar and side bolsters

WHEELS, 5-SPOKE, POLISHED ALUMINUM, 18" x 8.5" (45.7 CM x 21.6 CM), FRONT AND 19" x 10.0" (48.3 CM x 25.4 CM), REAR **\$1,295**

Option Packages Total

\$8,090

AUTOPARK

Dallas

Auto Park Dallas

View this car on our website at autoparkdallas.com/6975845

Website: autoparkdallas.com

Phone: (214) 945-2601

Map: [2061 S Stemmons Fwy, Lewisville, TX 75067](#)

