

2021 Jeep Wrangler Unlimited Sport 4X4 SKY TOP,LIFTED,BUMPERS,LED'S,NAV

View this car on our website at tveauto.com/6974496/ebrochure



Our Price **\$77,900**

Specifications:

Year:	2021
VIN:	1C4HJXDG8MW659169
Make:	Jeep
Stock:	659169
Model/Trim:	Wrangler Unlimited Sport 4X4 SKY TOP,LIFTED,BUMPERS,LED'S,NAV
Condition:	Pre-Owned
Body:	SUV
Exterior:	Black Clearcoat
Engine:	ENGINE: 3.6L V6 24V VVT ETORQUE UPG I
Interior:	Black Leather
Transmission:	TRANSMISSION: 8-SPEED AUTOMATIC (850RE)
Mileage:	36
Drivetrain:	4 Wheel Drive
Economy:	City 17 / Highway 23

NATION WIDE FINANCING

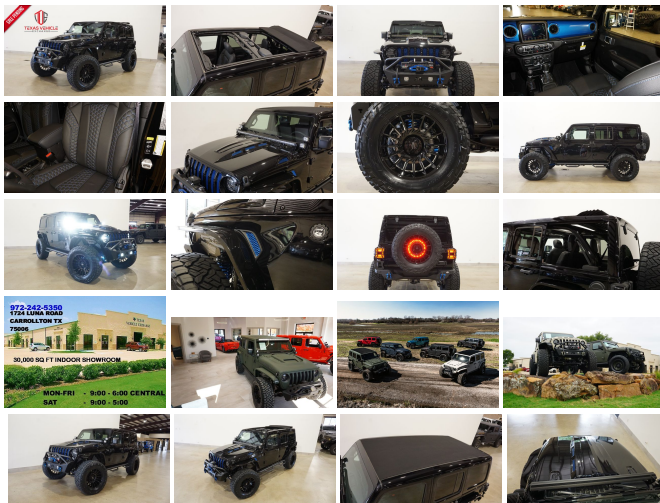
SUBMIT CREDIT APP WWW.TVEAUTO.COM

OR CALL 972-242-5350

"BLACK CLEAR COAT EDITION"

CUSTOM BUILT 2021 JEEP WRANGLER JL
UNLIMITED SPORT 4X4 WITH 25S PACKAGE

UPGRADES INCLUDE:



- * BLACK CLEAR COAT WITH BLUE ACCENTS
- * SKY ONE-TOUCH POWER TOP WITH REMOVABLE REAR QUARTER WINDOWS
- * CUSTOM ALEA BLACK LEATHER WITH BLUE STITCHING
- * FACTORY REMOTE START
- * COLD WEATHER GROUP
- * CONVENIENCE GROUP
- * SUN AND SOUND PACKAGE
- * FACTORY 8.4 INCH TOUCH SCREEN NAVIGATION WITH HD AM/FM/SIRIUS STEREO & ALPINE PREMIUM AUDIO SYSTEM
- * FACTORY BACK-UP CAMERA
- * U-CONNECT

- * FAB FOURS STUBBY FRONT BUMPER WITH LED FOGLIGHTS
- * FRONT D-RINGS & ISOLATORS (BLUE)

- * SMITTYBILT NEW GEN II "X20" 10,000 LB WATERPROOF AND WIRELESS CONTROL WINCH WITH SYNTHETIC ROPE
- * FACTOR 55 PROLINK (BLACK)
- * FACTORY MESH GRILLE PAINTED BLUE
- * FACTORY LED HEADLIGHTS
- * RUGGED RIDGE BLACK HEADLIGHT GUARDS
- * CUSTOM JL HEAT EXPULSION HOOD (PAINTED TO MATCH)
- * DV8 OFF ROAD JL SLIM STEEL FENDER FLARES (PAINTED TO MATCH)
- * DV8 OFF ROAD FRONT & REAR INNER FENDERS
- * RUBICON EXPRESS 2.5" LIFT KIT WITH TERAFLEX FALCON SHOCKS

- * TERAFLEX FALCON STABILIZER KIT
- * SUSPENSION PARTS (PAINTED BLUE)
- * VOSWITCH 6 CHANNEL CUSTOM INTEGRATED SWITCH PANEL
- * 50" LED LIGHT BAR AND 4 RIGID INDUSTRIES D-SS DUALY SIDE SHOOTER LED PILLAR LIGHTS (LIGHT BRACKETS PAINTED TO MATCH)
- * SMITTYBILT BLACK TUBULAR STEPS
- * MOPAR BLACK FUEL DOOR
- * EVOLUTION 2 BLACK LED TAIL LIGHTS
- * RUGGED RIDGE BLACK TAIL LIGHT GUARDS
- * RUGGED RIDGE SPARTACUS HD HINGE KIT
- * RUGGED RIDGE LED THIRD BRAKE LIGHT RING
- * DV8 OFF ROAD REAR BUMPER
- * REAR D-RINGS & ISOLATORS (BLUE)
- * ALL WEATHER FLOOR MATS
- * TAZER JL PROGRAMMER WITH SPEEDOMETER CALIBRATION
- * 20" MOTO METAL GLOSS BLACK "MO807 SHOCKWAVE" WHEELS
- * BRAND NEW NITTO RECON GRAPPLER A/T 37X13.50R/20 TIRES

WE BUILD EVERY JEEP WITH PRIDE! DO NOT HESITATE TO CALL US WITH THIS JEEP BUILD. WE CAN MAKE CHANGES TO THIS JEEP BUILD OR CUSTOM BUILD ANY JEEP TO YOUR PREFERENCE. GIVE US A CALL @ 972-242-5350 OR STOP BY FOR A TEST DRIVE. 1724 LUNA RD IN CARROLLTON - 2 MILES NORTH OF 635.

Our Location :



Installed Options

Interior

- 110 MPH Vehicle Max Speed Calibration - 2 12V DC Power Outlets
- 2 Seatback Storage Pockets
- 4-Way Passenger Seat -inc: Manual Recline and Fore/Aft Movement
- 6-Way Driver Seat -inc: Manual Recline, Height Adjustment, Fore/Aft Movement and Manual Lumbar Support
- 60-40 Folding Split-Bench Front Facing Fold Forward Seatback Cloth Rear Seat
- Analog Appearance- Cargo Space Lights- Carpet Floor Trim, Carpet And Rubber Mat
- Cloth Low-Back Bucket Seats- Compass- Cruise Control w/Steering Wheel Controls
- Day-Night Rearview Mirror- Delayed Accessory Power- Fade-To-Off Interior Lighting
- Front And Rear Map Lights- Front Center Armrest w/Storage
- Front Seats w/Cloth Back Material and Manual Driver Lumbar
- Full Carpet Floor Covering -inc: Carpet Front And Rear Floor Mats
- Full Floor Console w/Locking Storage and 2 12V DC Power Outlets
- Gauges -inc: Speedometer, Odometer, Engine Coolant Temp, Tachometer, Engine Hour Meter, Trip Odometer and Trip Computer
- HVAC -inc: Console Ducts- Illuminated Front Cupholder- Illuminated Rear Cupholder
- Instrument Panel Bin, Dashboard Storage, Driver / Passenger And Rear Door Bins
- Interior Trim -inc: Metal-Look Instrument Panel Insert and Metal-Look Console Insert
- Locking Cargo Area Concealed Storage- Locking Glove Box
- Manual Adjustable Front Head Restraints and Foldable Rear Head Restraints
- Manual Air Conditioning- Manual Tilt/Telescoping Steering Column
- Outside Temp Gauge- Proximity Key For Push Button Start Only
- Redundant Digital Speedometer- Removable 3rd Row Windows
- Sentry Key Engine Immobilizer- Systems Monitor- Trip Computer
- Urethane Gear Shifter Material- Vanity w/Driver And Passenger Auxiliary Mirror

Exterior

- Aero-Composite Halogen Headlamps w/Delay-Off- Black Door Handles
- Black Fender Flares- Black Front Bumper w/2 Tow Hooks
- Black Rear Bumper w/1 Tow Hook- Black Side Windows Trim- Body-Colored Grille
- Clearcoat Paint- Conventional Rear Cargo Access- Deep Tint Sunscreen Windows
- Front Fog Lamps- Full-Size Spare Tire Mounted Outside Rear
- Galvanized Steel/Aluminum/Magnesium Panels
- Manual Convertible Top w/Fixed Roll-Over Protection
- Non-Lock Fuel Cap w/o Discriminator- Removable Rear Window
- Tires: 245/75R17 All Season- Variable Intermittent Wipers
- Wheels: 17" x 7.5" Tech Silver Aluminum

Safety

- 110 MPH Vehicle Max Speed Calibration- 2 12V DC Power Outlets
- 2 Seatback Storage Pockets
- 4-Way Passenger Seat -inc: Manual Recline and Fore/Aft Movement
- 6-Way Driver Seat -inc: Manual Recline, Height Adjustment, Fore/Aft Movement and Manual Lumbar Support
- 60-40 Folding Split-Bench Front Facing Fold Forward Seatback Cloth Rear Seat
- Analog Appearance- Cargo Space Lights- Carpet Floor Trim, Carpet And Rubber Mat
- Cloth Low-Back Bucket Seats- Compass- Cruise Control w/Steering Wheel Controls
- Day-Night Rearview Mirror- Delayed Accessory Power- Fade-To-Off Interior Lighting
- Front And Rear Map Lights- Front Center Armrest w/Storage
- Front Seats w/Cloth Back Material and Manual Driver Lumbar
- Full Carpet Floor Covering -inc: Carpet Front And Rear Floor Mats
- Full Floor Console w/Locking Storage and 2 12V DC Power Outlets
- Gauges -inc: Speedometer, Odometer, Engine Coolant Temp, Tachometer, Engine Hour Meter, Trip Odometer and Trip Computer
- HVAC -inc: Console Ducts- Illuminated Front Cupholder- Illuminated Rear Cupholder
- Instrument Panel Bin, Dashboard Storage, Driver / Passenger And Rear Door Bins
- Interior Trim -inc: Metal-Look Instrument Panel Insert and Metal-Look Console Insert
- Locking Cargo Area Concealed Storage- Locking Glove Box
- Manual Adjustable Front Head Restraints and Foldable Rear Head Restraints
- Manual Air Conditioning- Manual Tilt/Telescoping Steering Column
- Outside Temp Gauge- Proximity Key For Push Button Start Only
- Redundant Digital Speedometer- Removable 3rd Row Windows
- Sentry Key Engine Immobilizer- Systems Monitor- Trip Computer
- Urethane Gear Shifter Material- Vanity w/Driver And Passenger Auxiliary Mirror

Mechanical

- 1233# Maximum Payload- 180 Amp Alternator- 21.5 Gal. Fuel Tank- 3 Skid Plates
- 3.45 Rear Axle Ratio
- 4-Wheel Disc Brakes w/4-Wheel ABS, Front Vented Discs, Brake Assist and Hill Hold Control
- 50 State Emissions- 650CCA Maintenance-Free Battery w/Run Down Protection
- Auto Locking Hubs- Aux Battery- Brake Actuated Limited Slip Differential
- Electro-Hydraulic Power Assist Steering- Engine Oil Cooler
- Engine: 3.6L V6 24V VVT UPG I w/ESS - Front And Rear Anti-Roll Bars
- GVWR: 5,400 lbs- Gas-Pressurized Shock Absorbers
- Leading Link Front Suspension w/Coil Springs- Manual Transfer Case
- Normal Duty Suspension- Part-Time Four-Wheel Drive- Single Stainless Steel Exhaust
- Stop-Start Dual Battery System- Towing Equipment -inc: Trailer Sway Control
- Trailing Arm Rear Suspension w/Coil Springs- Transmission: 6-Speed Manual

Option Packages

Factory Installed Packages

ENGINE: 3.6L V6 24V VVT ETORQUE UPG I

- inc: 600 Amp Maintenance Free Battery, 48V Belt Starter Generator, GVWR: 5,460 lbs, Engine Oil Cooler, Delete Alternator
- \$750

TRANSMISSION: 8-SPEED AUTOMATIC (850RE)

- inc: Anti-Lock 4-Wheel Disc Brakes
- \$2,500

COLD WEATHER GROUP

-inc: Heated Steering Wheel,
Heated Front Seats \$995

CONVENIENCE GROUP

-inc: Universal Garage Door
Opener \$595

SUN AND SOUND PACKAGE

-inc: Media Hub-2 USBS (Both
Charge Only), Remote USB
Port - Charge Only, 115V
Auxiliary Power Outlet, 8.4"
Radio & Premium Audio
Group, Emergency/Assistance
Call, Alpine Premium Audio
System, Rear View Auto Dim
Mirror, Sky 1-Touch Power
Top, Rear Window Defroster,
Rear Window Wiper/Washer,
Removable Rear Quarter
Windows, Power Top Quarter
Window Storage Bag, Console
Bin Task Light \$4,190

TECHNOLOGY GROUP

-inc: Google Android Auto,
Selectable Tire Fill Alert,
SiriusXM Satellite Radio,
SiriusXM Radio Service, For
More Info, Call 800-643-2112,
USB Host Flip, Integrated
Center Stack Radio, Air
Conditioning w/Auto Temp
Control, GPS Antenna Input,
Cluster 7.0" TFT Color Display,
7.0" Touchscreen Display,
Radio: Uconnect 4 w/7"
Display, Apple CarPlay, Air
Filtering \$995

QUICK ORDER PACKAGE 25S SPORT S

-inc: Engine: 3.6L V6 24V VVT
eTorque UPG I, Transmission:
8-Speed Automatic (850RE),
Front 1-Touch Down Power
Windows, Speed Sensitive
Power Locks, Sport S, Power
Heated Mirrors, Automatic
Headlamps, Leather Wrapped
Steering Wheel, Security
Alarm, Remote Keyless Entry,
Sun Visors w/Illuminated Vanity
Mirrors \$3,200

BLACK CLEARCOAT

\$245

Option Packages Total

\$13,470

Texas Vehicle Exchange

tveauto.com

972-242-5350

1724 Luna Road

Carrollton, TX 75006

© 2023 AutoRevo - All rights reserved. - Powered by AutoRevo