



2018 Chevrolet Cruze LT

Our Price \$18,998

View this vehicle on our website at parksdeals.com

Parks Chevrolet, Inc.

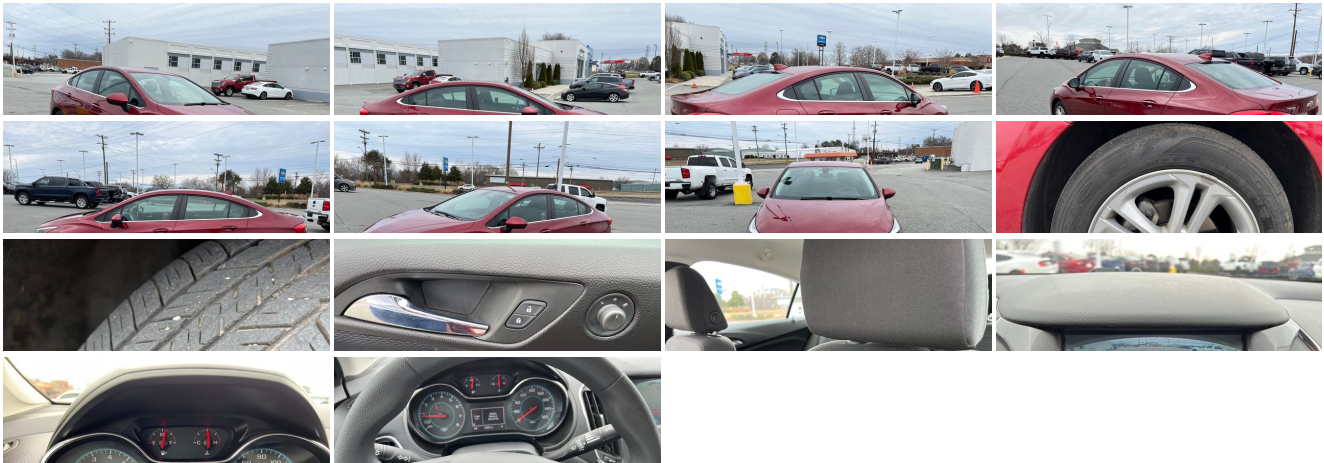
[833-825-2763](tel:833-825-2763)

615 NC-66 South, Kernersville, NC 27284

[Photos](#)

[Details](#)

[Contact](#)



Specifications:

Year:

2018

VIN:	1G1BE5SM6J7240422
Make:	Chevrolet
Stock:	514060A
Model/Trim:	Cruze LT
Condition:	Pre-Owned
Body:	Sedan
Exterior:	Cajun Red Tintcoat
Engine:	ENGINE, 1.4L TURBO DOHC 4-CYLINDER DI
Interior:	Black Cloth
Mileage:	32,640
Drivetrain:	Front Wheel Drive
Economy:	City 29 / Highway 40

Vehicle Description

Parks Chevrolet in Kernersville, NC ! We offer low payment - easy financing on everything ! We sell in volume and that saves you money!!

2018 Cajun Red Tintcoat Chevrolet Cruze Clean CARFAX. 16" Aluminum Wheels, 6-Speaker Audio System Feature, Alloy wheels, AM/FM radio: SiriusXM, Convenience Package, Driver 8-Way Power Seat Adjuster, Driver Confidence Package, Exterior Parking Camera Rear, Fully automatic headlights, Heated Driver & Front Passenger Seat, Keyless Open, Keyless Start, Panic alarm, Preferred Equipment Group 1SD, Radio: AM/FM Chevrolet MyLink w/7" Touch-Screen, Rear Cross-Traffic Alert, Rear Park Assist, Remote Vehicle Starter System, Security system, Side Blind Zone Alert w/Lane Change Alert, SiriusXM Satellite Radio.

\$1000 - Dealer Trade-in Allowance (Must own and trade a 2014 or newer passenger vehicle to qualify for the Dealer Trade-in Allowance), Allowance is \$1000 above True Car Cash Offer. This offer is based on the current condition of the vehicle and must be appraised at the Dealership to receive the Trade-In Allowance. \$1000 - Dealer Finance Discount (Must qualify and finance with GM Financial, not available with special financing rates or programs.) Price does not include tax, tag, and fees.

Installed Options

Interior

- Seats, front bucket with reclining seatbacks and adjustable head restraints
- Seat trim, cloth
- Seat, rear 60/40 split-folding includes center fold-down armrest with 2 cupholders
- Floor mats, carpeted front and rear - Tire Pressure Display- Door locks, power
- Remote Keyless Entry- Theft-deterrent system, unauthorized entry- Remote panic alarm
- Visors, driver and front passenger vanity mirrors- Seat adjuster, driver 6-way manual
- Seat adjuster, front passenger 2-way manual- Head restraints, 2-way adjustable, front
- Armrest, rear center, fold-down with 2 cupholders- Console, floor, with armrest
- Steering column, manual tilt and telescopic- Steering wheel, 3-spoke, deluxe
- Steering wheel controls, mounted audio and phone interface controls
- Instrumentation, analog with mph speedometer
- Driver Information Center, monochromatic display- Oil life monitoring system
- Warning tones, driver and front passenger safety belts
- Windows, power with driver and front passenger Express-Down
- Key, primary foldable, additional foldable (Deleted when (6K5) Convenience Package is ordered.)
- Trunk release, power, remote- Cruise control
- Engine immobilizer, theft-deterrent system
- Air conditioning, single-zone electronic includes air filter- Rear air ducts, floor mounted
- Defogger, rear-window, electric- Sensor, cabin humidity
- Mirror, inside rearview manual day/night
- Lighting, interior overhead courtesy lamp and dual reading lamps
- Lighting, interior, roof, rear courtesy- Lighting, interior, trunk/cargo area
- Map pockets, front passenger seatback

Exterior

- Wheels, 16" (40.6 cm) aluminum- Tires, 205/55R16 all-season, blackwall
- Wheel, spare, 16" (40.6 cm) steel- Tire, T115/70R16, blackwall, compact spare
- Moldings, bright beltline
- Headlamps, halogen dual projector with LED signature lighting with automatic on/off and delay
- Mirrors, outside heated power-adjustable, manual-folding- Windshield, solar absorbing

Option Packages

Factory Installed Packages

ENGINE, 1.4L TURBO DOHC 4-CYLINDER DI
with Continuous Variable Valve Timing (CVT)
(153 hp [114.08 kW] @ 5600 rpm, 177 lb-ft of
torque [239 N-m] @ 2000-4000 rpm)

- Wipers, front intermittent, variable- Glass, solar absorbing- Door handles, body-color
- Daytime Running Lamps, separate cavity, LED

Safety

- Seats, front bucket with reclining seatbacks and adjustable head restraints
- Seat trim, cloth
- Seat, rear 60/40 split-folding includes center fold-down armrest with 2 cupholders
- Floor mats, carpeted front and rear- Tire Pressure Display- Door locks, power
- Remote Keyless Entry- Theft-deterrent system, unauthorized entry- Remote panic alarm
- Visors, driver and front passenger vanity mirrors- Seat adjuster, driver 6-way manual
- Seat adjuster, front passenger 2-way manual- Head restraints, 2-way adjustable, front
- Armrest, rear center, fold-down with 2 cupholders- Console, floor, with armrest
- Steering column, manual tilt and telescopic- Steering wheel, 3-spoke, deluxe
- Steering wheel controls, mounted audio and phone interface controls
- Instrumentation, analog with mph speedometer
- Driver Information Center, monochromatic display- Oil life monitoring system
- Warning tones, driver and front passenger safety belts
- Windows, power with driver and front passenger Express-Down
- Key, primary foldable, additional foldable (Deleted when (6K5) Convenience Package is ordered.)
- Trunk release, power, remote- Cruise control
- Engine immobilizer, theft-deterrent system
- Air conditioning, single-zone electronic includes air filter- Rear air ducts, floor mounted
- Defogger, rear-window, electric- Sensor, cabin humidity
- Mirror, inside rearview manual day/night
- Lighting, interior overhead courtesy lamp and dual reading lamps
- Lighting, interior, roof, rear courtesy- Lighting, interior, trunk/cargo area
- Map pockets, front passenger seatback

Mechanical

- Transmission, 6-speed automatic
- Engine, 1.4L turbo DOHC 4-cylinder DI with Continuous Variable Valve Timing (CVT) (153 hp [114.08 kW] @ 5600 rpm, 177 lb-ft of torque [239 N-m] @ 2000-4000 rpm)
- Engine control, stop-start system- Axle, 3.14 ratio- Front wheel drive
- Coolant protection, engine- Battery, 80AH- Alternator, 130 amps
- Suspension, front MacPherson strut
- Steering, power, electric rack-mounted, reduced travel
- Brakes, 4-wheel disc, 4-wheel antilock, Duralife, power
- Brake lining, high-performance, noise and dust performance
- Brake, parking, manual, foot apply

Parks Chevrolet, Inc.

Parks Chevrolet, Inc.

View this car on our website at parksdeals.com/6974398

Website: parksdeals.com

Phone: [833-825-2763](tel:833-825-2763)

Map: [615 NC-66 South, Kernersville, NC 27284](#)

