



2016 Ram 1500 SLT BIG HORN 4WD

Our Price \$33,495

View this vehicle on our website at premiermotorsportslc.com

Premier Motorsports LLC

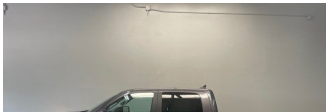
[\(801\) 771-2277](tel:8017712277)

840 E HWY 193, Layton, Utah 84041

[Photos](#)

[Details](#)

[Contact](#)



Specifications:

Year:	2016
VIN:	1C6RR7LG6GS417711
Make:	Ram
Model/Trim:	1500 SLT BIG HORN 4WD
Condition:	Pre-Owned
Body:	Pickup Truck
Exterior:	Granite Crystal Metallic Clearcoat
Engine:	ENGINE: 3.6L V6 24V VVT
Interior:	Diesel Gray/Black Cloth

Transmission:	TRANSMISSION: 8-SPEED AUTOMATIC (845RE)
Mileage:	38,701
Drivetrain:	4 Wheel Drive
Economy:	City 16 / Highway 23

Vehicle Description

4X4 CREW BIG HORN 7" DISPLAY NAVIGATION CAPABLE UCONNECT STEERING WHEEL CONTROLS SATELLITE RADIO PARK VIEW CAMERA PARKSENSE FRONT AND REAR ELECTRONIC SHIFT ON THE FLY 4WD LEATHER STEERING WHEEL 115 VOLT AUX POWER POWER HEATED MIRRORS REMOTE ENTRY REMOTE START LED BED LIGHTING CLASS IV TOW PKGPOER REAR WINDOW REAR UNDER SEAT STORAGE 6 PASS SEATING DROP IN BEDLINER 17 CHROME WHEELS!! This Ram is LOADED with Options and in excellent condition. This 2 Owner Vehicle is Carfax Certified and AutoCheck Assured no Accident or Damage History!! Like New Michelin Tires!! Trades Welcome. Financing Available with rates staring at 2.99% OAC. Please call to schedule an appointment and to verify availability. Thank you for Considering Premier Motorsports. Visit our website for additional pictures as well as other Pre-Owned Vehicles at www.premiermotorsportslc.com

Installed Options	Option Packages
Interior <ul style="list-style-type: none">- 40/20/40 Split Bench Seat- 5.0" Touchscreen Display- Analog Display- Armrests w/Storage and Rear Center Armrest- Audio Jack Input for Mobile Devices- Cargo Area Concealed Storage- Compass- Cruise Control w/Steering Wheel Controls- Day-Night Rearview Mirror- Delayed Accessory Power- Driver Seat- Electronic Shift- FOB Controls -inc: Cargo Access- Fade-To-Off Interior Lighting- Front Armrest w/3 Cupholders- Front Map Lights- Full Carpet Floor Covering -inc: Carpet Front And Rear Floor Mats - Full Cloth Headliner- GPS Antenna Input- Gauges -inc: Speedometer, Odometer, Voltmeter, Oil Pressure, Engine Coolant Temp, Tachometer, Oil Temperature, Transmission Fluid Temp, Engine Hour Meter, Trip Odometer and Trip Computer- Glove Box- HVAC -inc: Underseat Ducts and Console Ducts- Instrument Panel Bin, Dashboard Storage, Driver / Passenger And Rear Door Bins and 2nd Row Underseat Storage- Interior Trim -inc: Deluxe Sound Insulation, Metal-Look Instrument Panel Insert, Metal-Look Door Panel Insert and Chrome/Metal-Look Interior Accents- Manual Adjust Seats- Manual Adjustable Front Head Restraints and Manual Adjustable Rear Head Restraints- Manual Air Conditioning- Manual Tilt Steering Column- Outside Temp Gauge- ParkSense Front/Rear Park Assist System- ParkView Rear Back-Up Camera- Passenger Seat- Power 1st Row Windows w/Driver And Passenger 1-Touch Up/Down- Power Door Locks w/Autolock Feature- Power Rear Windows- Rear Cupholder- Rear Folding Seat- Redundant Digital Speedometer- Remote Keyless Entry w/Integrated Key Transmitter, Illuminated Entry and Panic Button- Remote USB Port- Sentry Key Engine Immobilizer- Storage Tray- Systems Monitor- Trip Computer- Urethane Gear Shifter Material- Valet Function- Vinyl Door Trim Insert	Factory Installed Packages <hr/> <div>ENGINE: 3.6L V6 24V VVT<div>-inc: Flex fuel capable</div></div> <hr/> <div>TRANSMISSION: 8-SPEED AUTOMATIC (845RE)</div> <hr/> <div>CHROME BODYSIDE MOLDING<div>\$270</div></div> <hr/> <div>FRONT & REAR RUBBER FLOOR MATS<div>\$105</div></div> <hr/> <div>QUICK ORDER PACKAGE 22S BIG HORN<div>-inc: Engine: 3.6L V6 24V VVT, Transmission: 8-Speed Automatic (845RE), Leather Wrapped Steering Wheel, Rear Dome w/On/Off Switch Lamp, Underhood Lamp, LED Bed Lighting, Glove Box Lamp, Bright/Bright Billets Grille, Ash Tray Lamp, Auto Dim Exterior Mirrors, Big Horn Regional Package, Locking Lug Nuts, Full Size Temporary Use Spare Tire, Big Horn Badge, Security Alarm, Power Heated Fold-Away Mirrors, Electroluminescent Instrument Cluster, Overhead Console w/Garage Door Opener, Universal Garage Door Opener, Remote Start System, Remote SD Card Slot, 6 Month Trial (Reg, Required), Media Hub (SD, USB, AUX), For Details Visit DriveUconnect.com, Uconnect Access, 6 Month Trial (Registration Required), 8.4" Touchscreen Display, Nav-Capable! See Dealer for Details, Exterior Mirrors w/Supplemental Signals, Steering Wheel Mounted Audio Controls, Exterior Mirrors Courtesy Lamps, Rear View Auto Dim Mirror w/Microphone, Electric Shift On Demand Transfer Case, Power Folding Mirrors, Sun Visors w/Illuminated Vanity Mirrors</div><div>\$2,565</div></div> <hr/> <div>GRANITE CRYSTAL METALLIC CLEARCOAT</div> <hr/> <div>DIESEL GRAY/BLACK, PREMIUM CLOTH 40/20/40 BENCH SEAT</div> <hr/> <div>TIRES: P265/70R17 BSW AS</div> <hr/> <div>WHEELS: 17" X 7" ALUMINUM CHROME CLAD<div>-\$500</div></div> <hr/> <div>Option Packages Total<div>\$2,440</div></div>
Exterior <ul style="list-style-type: none">- Tires: P275/60R20 BSW AS- Wheels: 20" x 8" Aluminum Chrome Clad -inc: Locking Lug Nuts, Full Size Temporary Use Spare Tire- Active Grille Shutters- Aluminum Spare Wheel- Black Exterior Mirrors- Black Side Windows Trim and Black Front Windshield Trim - Center Hub- Chrome Door Handles- Chrome Front Bumper w/Body-Colored Rub Strip/Fascia Accent- Chrome Rear Step Bumper- Clearcoat Paint- Deep Tinted Glass- Exterior Mirrors w/Heating Element- Fog Lamps- Front License Plate Bracket- Fully Automatic Aero-Composite Halogen Headlamps w/Delay-Off- Galvanized Steel/Aluminum Panels- Goodyear Brand Tires- Power Rear Window- Regular Box Style- Spare Tire Stored Underbody w/Crankdown- Tailgate Rear Cargo Access- Tailgate/Rear Door Lock Included w/Power Door Locks- Tip Start- Variable Intermittent Wipers	
Safety <ul style="list-style-type: none">- 40/20/40 Split Bench Seat- 5.0" Touchscreen Display- Analog Display- Armrests w/Storage and Rear Center Armrest- Audio Jack Input for Mobile Devices- Cargo Area Concealed Storage- Compass- Cruise Control w/Steering Wheel Controls- Day-Night Rearview Mirror- Delayed Accessory Power- Driver Seat- Electronic Shift- FOB Controls -inc: Cargo Access- Fade-To-Off Interior Lighting- Front Armrest w/3 Cupholders- Front Map Lights	

- Front Airrest w/3 Cupholders- Front Map Lights
- Full Carpet Floor Covering -inc: Carpet Front And Rear Floor Mats - Full Cloth Headliner
- GPS Antenna Input
- Gauges -inc: Speedometer, Odometer, Voltmeter, Oil Pressure, Engine Coolant Temp, Tachometer, Oil Temperature, Transmission Fluid Temp, Engine Hour Meter, Trip Odometer and Trip Computer
- Glove Box- HVAC -inc: Underseat Ducts and Console Ducts
- Instrument Panel Bin, Dashboard Storage, Driver / Passenger And Rear Door Bins and 2nd Row Underseat Storage
- Interior Trim -inc: Deluxe Sound Insulation, Metal-Look Instrument Panel Insert, Metal-Look Door Panel Insert and Chrome/Metal-Look Interior Accents
- Manual Adjust Seats
- Manual Adjustable Front Head Restraints and Manual Adjustable Rear Head Restraints
- Manual Air Conditioning- Manual Tilt Steering Column- Outside Temp Gauge
- ParkSense Front/Rear Park Assist System- ParkView Rear Back-Up Camera
- Passenger Seat- Power 1st Row Windows w/Driver And Passenger 1-Touch Up/Down
- Power Door Locks w/Autolock Feature- Power Rear Windows- Rear Cupholder
- Rear Folding Seat- Redundant Digital Speedometer
- Remote Keyless Entry w/Integrated Key Transmitter, Illuminated Entry and Panic Button
- Remote USB Port- Sentry Key Engine Immobilizer- Storage Tray- Systems Monitor
- Trip Computer- Urethane Gear Shifter Material- Valet Function- Vinyl Door Trim Insert

Mechanical

- 160 Amp Alternator- 1640# Maximum Payload- 26 Gallon Fuel Tank
- 3.21 Rear Axle Ratio
- 4-Wheel Disc Brakes w/4-Wheel ABS, Front Vented Discs, Brake Assist and Hill Hold Control
- 50 State Emissions- 730CCA Maintenance-Free Battery- Auto Locking Hubs
- Black Rotary Shifter- Class IV Receiver Hitch- Electric Power-Assist Steering
- Engine Oil Cooler- Engine: 3.6L V6 24V VVT -inc: Flex fuel capable - Four-Wheel Drive
- Front And Rear Anti-Roll Bars- GVWR: 6,800 lbs- HD Shock Absorbers
- Multi-Link Rear Suspension w/Coil Springs
- Short And Long Arm Front Suspension w/Coil Springs- Single Stainless Steel Exhaust
- Towing Equipment -inc: Trailer Sway Control- Trailer Wiring Harness
- Transmission w/Driver Selectable Mode and Oil Cooler
- Transmission: 8-Speed Automatic (845RE)

Payments based on vehicle selling price does not include tax, title, and registration as quoted on the Out the Door Price. Internet price based on dealer arranged financing. See dealer for details. All rates based on prime credit tier OAC!

Premier Motorsports LLC

Premier Motorsports LLC

View this car on our website at premiermotorsportsllc.com/6974205

Website: premiermotorsportsllc.com

Phone: (801) 771-2277

Map: [840 E HWY 193, Layton, Utah 84041](#)

