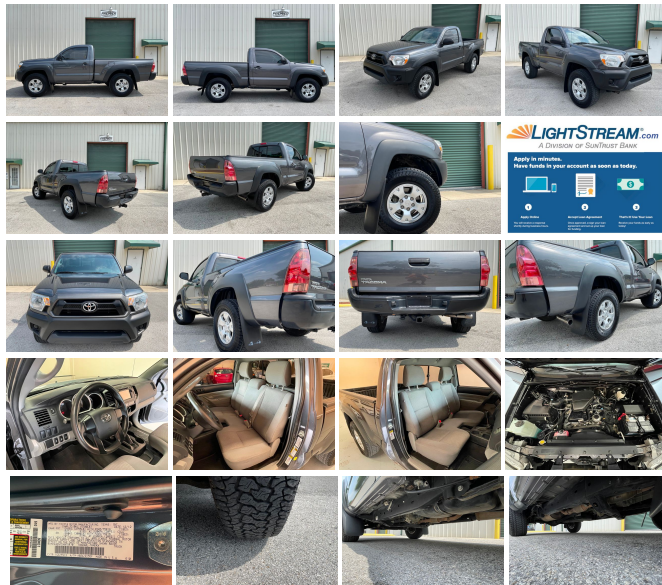


3075 Leon Rd
Jacksonville , FL 32246

2013 Toyota Tacoma 4wd

Nolan Hill

View this car on our website at premierautomotivesource.com/6969436/ebrochure



Our Price **\$0**

Specifications:

Year:	2013
VIN:	5TFPX4EN7DX015470
Make:	Toyota
Model/Trim:	Tacoma 4wd
Condition:	Pre-Owned
Body:	Pickup Truck
Exterior:	Magnetic Gray Metallic
Engine:	2.7L DOHC EFI 16-valve I4 VVT-i engine
Interior:	Graphite Cloth
Transmission:	5 Speed manual
Mileage:	96,350
Drivetrain:	4 Wheel Drive
Economy:	City 18 / Highway 20

2013 TOYOTA TACOMA 4WD

- CLEAN FLORIDA TRUCK -
- MANUAL TRANSMISSION -
- ALLOY WHEELS -
- SLIDING REAR WINDOW -
- TINTED WINDOWS -
- TOW PACKAGE -
- CLEAN CARFAX REPORT -

**FOR FINANCING WE
RECOMMEND <http://LIGHTSTREAM.COM>**

WE TAKE TRADE INS

WE SELL & SHIP WORLDWIDE

CALL OR TEXT NOLAN @ 904-382-
7230

- LIVE WALK AROUND VIDEO AVAILABLE -

2013 Toyota Tacoma standard cab 4WD.
Metallic gray with gray interior, cold A/C, tow package, tinted windows, sliding rear window, alloy wheels, Kumho A/T tires with plenty of tread. The 2.7 liter 4cyl. runs great, the 5 speed manual transmission shifts smooth. This Tacoma runs, drives, and looks great. Sale includes 1 key, rubber mats, window sticker, and owner's manual. Call or Text Nolan: 904-382-7230.

ALL INVENTORY IS STORED INDOORS AND SHOWN BY APPOINTMENT. We can also set up a time to do a FaceTime or Zoom video call while we walk-around the vehicle and you can see the vehicle and ask questions. Trades accepted, Extended warranties available. All applicable sales tax, title, registration and a \$299 document fees apply.

Also check us out at:

http://www.instagram.com/nolan_premierautosource/

<https://www.facebook.com/premierautosource/>

<http://youtube.com/premierautosource/>

#PREMIERAUTOSOURCE

Our Location :



2013 Toyota Tacoma 4wd

Premier Automotive Source LLC - - View this car on our website at premierautomotivesource.com/6969436/ebrochure

Installed Options

Interior

- Front cloth-trimmed tilt-forward 4-way adjustable bench seat w/active headrests
- (2) front cup holders- Air conditioning
- Center console -inc: covered armrest, storage compartment - Dual 12V aux pwr outlets
- Full carpeting
- Gauges -inc: tachometer, coolant temp, fuel level, LCD display, tripmeter, digital clock
- Sun visors w/passenger vanity mirror- Tilt & telescopic steering wheel

Exterior

- (4) fixed cargo bed tie-down points- 16" styled steel wheels- 2-speed windshield wipers
- Black bumpers, mirrors, door handles & overfenders- Black grille insert & argent surround
- Deck rail system w/(4) adjustable tie-down cleats
- Fiber-reinforced sheet-molded composite bed -inc: steel outer panels, storage compartments, rail caps, removable tailgate
- Front & rear mudguards- Full-size spare tire- Multi-reflector halogen headlamps
- P245/75R16 mud & snow tires

Safety

- Front cloth-trimmed tilt-forward 4-way adjustable bench seat w/active headrests
- (2) front cup holders- Air conditioning
- Center console -inc: covered armrest, storage compartment - Dual 12V aux pwr outlets
- Full carpeting
- Gauges -inc: tachometer, coolant temp, fuel level, LCD display, tripmeter, digital clock
- Sun visors w/passenger vanity mirror- Tilt & telescopic steering wheel

Mechanical

- 1-piece frame rails w/(8) cross members & fully boxed front sub-frame
- 2-speed electronically controlled transfer case- 2.7L DOHC EFI 16-valve I4 VVT-i engine
- 4WDemand part-time 4-wheel drive- 5-speed manual transmission
- Automatic limited slip differential- Coil-spring double-wishbone front suspension
- Engine skid plate- Front & rear stabilizer bars
- Pwr ventilated front disc & rear drum w/rear tandem booster brakes
- Rear leaf-spring suspension w/staggered outboard-mounted gas shock absorbers
- Variable-assist pwr rack & pinion steering

Option Packages

Factory Installed Packages

SLIDING REAR WINDOW	\$140
---------------------	-------

50 STATE EMISSIONS	
--------------------	--

MAGNETIC GRAY METALLIC	
------------------------	--

ALL WEATHER FLOOR MATS	\$55
------------------------	------

Option Packages Total	\$195
-----------------------	-------

DEALER POLICIES: Please review all photos carefully and ask questions prior to making an offer if there is anything you are not sure about. We welcome pre-sale inspections. Any descriptions we make of vehicles shall not be construed as any type of warranty. Our pictures are as thorough and precise as we can make them. Please be advised that this is not a brand new vehicle. It is a pre-owned vehicle and has previously been driven, so therefore with respect to the miles there will most likely be average wear and tear, such as minor scratches, minor dings, or small rock chips. We do our best to disclose any substantial blemishes in our photos and descriptions. If our vehicles include manuals, service records or extra sets of keys, it will be shown in the pictures and noted in the description. The advertised mileage is a round number and may vary slightly from the exact mileage due to demo and test drives. Once a vehicle leaves our premises, no refunds, credits, or adjustments, will be issued. All Vehicles are conveyed AS-IS. Dealer neither makes nor implies any warranty on this or any vehicle. Any dispute that may arise shall take place under the laws of the state of Florida, in the state of Florida and all sales are subject to binding Arbitration under the rules of the American Arbitration Association. All applicable sales tax, tag and title fees apply. When we receive a vehicle into our inventory, sometimes the title is being held by a bank or lender as collateral for the previous loan or payoff. Occasionally there is a delay in receiving the title from these lending institutions after payoff of the loan for up to two weeks. While we usually have the titles in our possession, there are instances where we may be waiting for the title to arrive. We guarantee clean titles on our vehicles unless otherwise noted. In some cases we may hold titles until cashiers checks or other funds are cleared or unless other arrangements were agreed upon. Titles will be sent via Fedex for proper tracking. Thank you for your patience and understanding.