

2019 Ford Super Duty F-350 DRW Pickup XL

Nichole Harris 361-290-5145

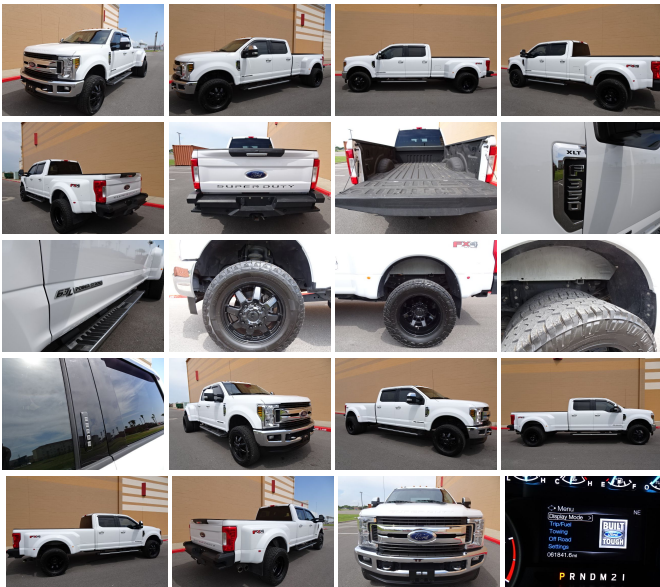
View this car on our website at discountmotorcompany.com/6967823/ebrochure



Internet Price **\$59,980**

Specifications:

Year:	2019
VIN:	1FT8W3DT4KED60000
Make:	Ford
Stock:	D60000FA
Model/Trim:	Super Duty F-350 DRW Pickup XL
Condition:	Pre-Owned
Body:	Pickup Truck
Exterior:	Oxford White
Engine:	ENGINE: 6.7L 4V OHV POWER STROKE V8 TURBO DIESEL B20
Interior:	Gray Cloth
Transmission:	AUTOMATIC TRANSMISSION
Mileage:	61,841
Drivetrain:	4 Wheel Drive



2019 Ford XLT - F-350 Super Duty - XLT Pkg. - Crew Cab - 4X4 - FX4 Off Road Pkg. - 6.7L Powerstroke Turbo Diesel - Automatic - Non-Smoker - Extremely Nice - 61,841 Miles.

2019 Ford F-350 Super Duty XLT FX4 Crew Cab 4X4 Off Road Package (6.7L 8cylTC) with Oxford White Exterior, Premium Grey Cloth Interior. Loaded with XLT Package, 6.7L Powerstroke Turbo Diesel Engine, Automatic Transmission, AM/FM/CD, Steering Wheel Audio Controls, Power Door Locks, Dual Power and Heated

Mirrors, Tilt, Cruise Control, Hands Free Calling, Back up Camera 110V AC Outlet, Tow Package, Electric Brake Controller, and much more!

***Feel free to give Nichole a call at 361-290-5145 and I will be happy to go over this F-350 4X4 Crew Cab XLT in detail with you.

***Pre-Buy inspections welcome. 100% CarFax guaranteed. Priced to Sell at \$59,980.

***MOST OF MY LISTINGS END WITH A PHONE CALL...DON'T HESITATE TO CALL NICHOLE TO GET A MORE DETAILED DESCRIPTION.

***CALL NICHOLE AT 361-290-5145 IF YOU HAVE ANY QUESTIONS!

SEE MORE AT
WWW.DISCOUNTMOTORCO.COM

Our Location :



2019 Ford Super Duty F-350 DRW Pickup XL

Discount Motor Company - 361-290-5145 - View this car on our website at discountmotorcompany.com/6967823/ebrochure

Installed Options

Interior

- 2 12V DC Power Outlets
- 4-Way Driver Seat -inc: Manual Recline and Fore/Aft Movement
- 4-Way Passenger Seat -inc: Manual Recline and Fore/Aft Movement
- 60-40 Folding Split-Bench Front Facing Fold-Up Cushion Rear Seat - Air Filtration
- Analog Appearance- Day-Night Rearview Mirror- Fade-To-Off Interior Lighting
- Front And Rear Map Lights- Full Cloth Headliner
- Full Overhead Console w/Storage and 2 12V DC Power Outlets
- Full Vinyl/Rubber Floor Covering
- Gauges -inc: Speedometer, Odometer, Oil Pressure, Engine Coolant Temp, Tachometer, Transmission Fluid Temp, Engine Hour Meter, Trip Odometer and Trip Computer
- HD Vinyl 40/20/40 Split Bench Seat -inc: center armrest, cupholder, storage and driver's side manual lumbar
- HVAC -inc: Underseat Ducts- Illuminated Locking Glove Box
- Instrument Panel Covered Bin and Dashboard Storage
- Interior Trim -inc: Chrome Interior Accents - Manual 1st Row Windows
- Manual Adjustable Front Head Restraints and Manual Adjustable Rear Head Restraints
- Manual Air Conditioning- Manual Rear Windows
- Manual Tilt/Telescoping Steering Column- Outside Temp Gauge
- Passenger Visor Vanity Mirror- Rear Cupholder
- Securilock Anti-Theft Ignition (pats) Engine Immobilizer- Systems Monitor- Trip Computer
- Underhood And Pickup Cargo Box Lights- Urethane Gear Shifter Material

Exterior

- Variable Intermittent Wipers
- Wheels: 17" Argent Painted Steel -inc: Hub covers/center ornaments not included
- Tires: LT245/75R17E BSW A/S (6)- Tailgate Rear Cargo Access- Steel Spare Wheel
- Regular Box Style- Manual Tailgate/Rear Door Lock
- Manual Extendable Trailer Style Mirrors- Light Tinted Glass

- Full-Size Spare Tire Stored Underbody w/Crankdown- Front License Plate Bracket
- Fixed Rear Window- Clearcoat Paint- Cargo Lamp w/High Mount Stop Light
- Cab Clearance Lights- Black Side Windows Trim and Black Front Windshield Trim
- Black Rear Step Bumper- Black Manual Side Mirrors w/Manual Folding- Black Grille
- Black Front Bumper w/Black Rub Strip/Fascia Accent and 2 Tow Hooks
- Black Door Handles
- Auto On/Off Aero-Composite Halogen Daytime Running Lights Preference Setting
Headlamps w/Delay-Off
- Aluminum Panels

Safety

- 2 12V DC Power Outlets
- 4-Way Driver Seat -inc: Manual Recline and Fore/Aft Movement
- 4-Way Passenger Seat -inc: Manual Recline and Fore/Aft Movement
- 60-40 Folding Split-Bench Front Facing Fold-Up Cushion Rear Seat - Air Filtration
- Analog Appearance- Day-Night Rearview Mirror- Fade-To-Off Interior Lighting
- Front And Rear Map Lights- Full Cloth Headliner
- Full Overhead Console w/Storage and 2 12V DC Power Outlets
- Full Vinyl/Rubber Floor Covering
- Gauges -inc: Speedometer, Odometer, Oil Pressure, Engine Coolant Temp, Tachometer,
Transmission Fluid Temp, Engine Hour Meter, Trip Odometer and Trip Computer
- HD Vinyl 40/20/40 Split Bench Seat -inc: center armrest, cupholder, storage and driver's
side manual lumbar
- HVAC -inc: Underseat Ducts- Illuminated Locking Glove Box
- Instrument Panel Covered Bin and Dashboard Storage
- Interior Trim -inc: Chrome Interior Accents - Manual 1st Row Windows
- Manual Adjustable Front Head Restraints and Manual Adjustable Rear Head Restraints
- Manual Air Conditioning- Manual Rear Windows
- Manual Tilt/Telescoping Steering Column- Outside Temp Gauge
- Passenger Visor Vanity Mirror- Rear Cupholder
- Securilock Anti-Theft Ignition (pats) Engine Immobilizer- Systems Monitor- Trip Computer
- Underhood And Pickup Cargo Box Lights- Urethane Gear Shifter Material

Mechanical

- 157 Amp Alternator- 3.73 Axle Ratio
- 4-Wheel Disc Brakes w/4-Wheel ABS, Front And Rear Vented Discs, Brake Assist and Hill
Hold Control
- 48 Gal. Fuel Tank- 50-State Emissions System- 6550# Maximum Payload
- 72-Amp/Hr 650CCA Maintenance-Free Battery w/Run Down Protection
- Auto Locking Hubs
- Class V Towing Equipment -inc: Hitch, Brake Controller and Trailer Sway Control
- Dual Rear Wheels- Electronic Transfer Case
- Engine: 6.2L 2-Valve SOHC EFI NA V8 Flex-Fuel -inc: Flex-Fuel badge on fleet orders only
- Firm Suspension- Front And Rear Anti-Roll Bars- Front Suspension w/Coil Springs
- GVWR: 14,000 lb Payload Package- HD Shock Absorbers
- Hydraulic Power-Assist Steering- Leaf Rear Suspension w/Leaf Springs
- Part-Time Four-Wheel Drive- Single Stainless Steel Exhaust- Trailer Wiring Harness
- Transmission w/Oil Cooler
- Transmission: TorqShift 6-Speed Automatic (6R140) -inc: SelectShift

Option Packages

Factory Installed Packages

ENGINE: 6.7L 4V OHV POWER STROKE
V8 TURBO DIESEL B20
-inc: manual push-button engine-
exhaust braking and intelligent
oil-life monitor, 48 Gallon Fuel
Tank, 3.55 Axle Ratio, 175
Amp Heavy Duty Alternator,
Dual 78-AH 750 CCA Batteries

\$9,120

LIMITED SLIP W/4.10 AXLE RATIO

\$360

OXFORD WHITE

-
MEDIUM EARTH GRAY, CLOTH 40/MINI-
CONSOLE/40 FRONT SEAT
-inc: driver's side manual lumbar \$615

-
Option Packages Total
\$10,095

Discount Motor Company
discountmotorcompany.com
361-290-5145

6601 South Padre Island
Corpus Christi, TX 78412

© 2021 AutoRevo - All rights reserved. - Powered by AutoRevo