



2010 Chevrolet Camaro 2SS

Website Price \$24,995

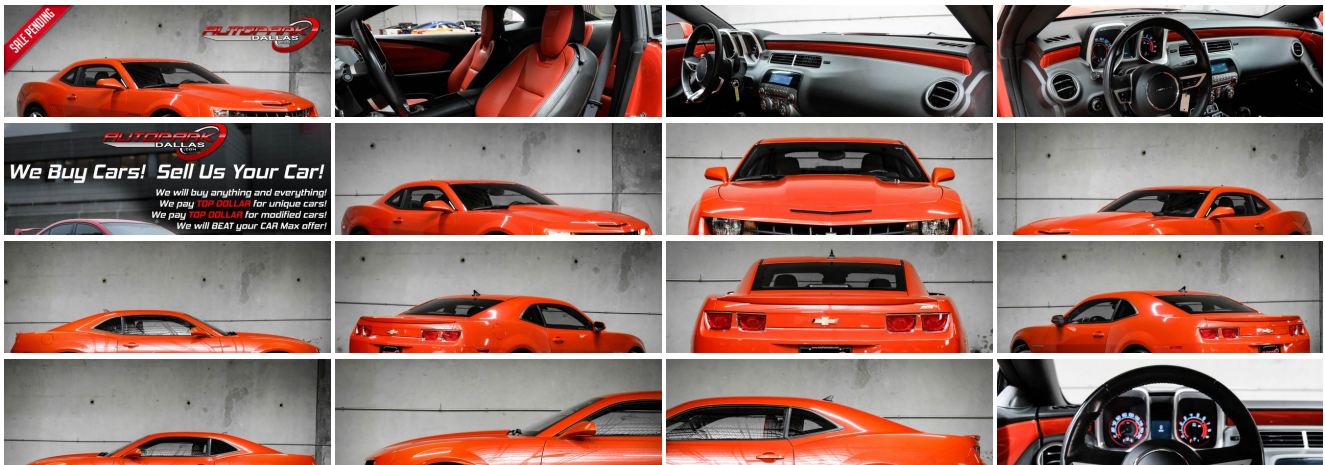
View this vehicle on our website at autoparkdallas.com

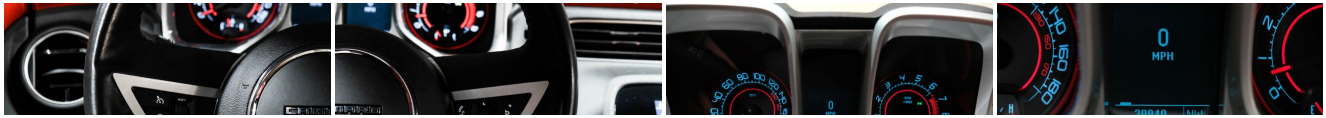


(214) 945-2601

2061 S Stemmons Fwy, Lewisville, TX 75067

- Photos
- Details
- Contact





Specifications:

Year:	2010
VIN:	2G1FT1EW4A9147880
Make:	Chevrolet
Model/Trim:	Camaro 2SS
Condition:	Pre-Owned
Body:	Coupe
Exterior:	Inferno Orange Metallic
Engine:	ENGINE, 6.2L V8 SFI
Interior:	Inferno Orange Leather
Transmission:	TRANSMISSION, 6-SPEED MANUAL
Mileage:	39,925
Drivetrain:	Rear Wheel Drive
Economy:	City 16 / Highway 24

Vehicle Description

AutoPark Dallas is thrilled to offer you this LOW MILEAGE Inferno Orange Metallic 2010 Chevrolet Camaro 2SS for sale! Nothing better than some good ol' American Muscle to brighten your day up and with our Camaro here going for the wild exterior style of bright orange can reflect that! Regardless, that hefty 6.2L V8 under the hood will give you that smile on your face as it has plenty of stock horsepower and has the easy ability to be given a whole lot more! If you are in search some fun American Muscle, then come check out this Camaro parked in our indoor 16,000 Sq Ft Showroom located in Dallas , Texas amongst our inventory of 100+ other Performance / Modified and Luxury cars!

2010 Chevrolet Camaro SS

*** 2 Previous Owners !***

*** LOW MILEAGE !***

Inferno Orange Metallic Exterior

Inferno Orange Leather Interior

Heated Front Row Seats

Single-Zone Air Conditioning

Cruise Control

Daytime Running Lights

CD & AUX Capable

Steering Wheel Mounted Controls

Boston Acoustic Premium Sound System

6.2L V8 SFI Engine

6-Speed Manual Transmission

Rear Wheel Drive

Professionally Detailed!

Well Maintained!

*** Free CarFax Report !***

AND SO MUCH MORE!!!

Financing is available!

Check out our Payment Calculator to get an estimate on your monthly payments!

OR

Get pre-approved in no time by filling out a credit application on the 'Finance' section of our website!

We also offer MANY different Extended Warranty options!

Check out our Google Reviews by *Clicking* this LINK!

Referrals and Testimonials is what our business is built on!

The team here at AutoPark Dallas, is dedicated to offering a level of customer service not usually found in the automobile industry. Thanks to years of extensive car buying / selling experience, we pursue quality used and new vehicles that are hand-picked from factory sources. Our love for automobiles and dislike of traditional dealership tactics is what motivates us to provide the service we do! The pride we take in continuing this service long after the vehicle has been delivered is what we strive for! Looking forward to making every effort to see that our customer is completely satisfied and a friend for life!

Pre-purchase inspections are always welcomed!

We also offer airport pick-up, competitive financing options, free CarFax Reports, Car Shipping nationwide, Extended Warranty plans, and so much more!

Trade-In(s) are always accepted or sell us your used car (MODIFIED OR NOT)! Please call or text for more information about Trade-Ins or selling your car to us @ (214) 945-2601!

#(214) 945-2601

Call or Text **Anytime!**

Se habla Español

WE BUY CARS!

WWW.AUTOPARKDALLAS.COM

Installed Options

Interior

- Air conditioning, single-zone manual- Air filtration system with pollen filter
- Cargo convenience net- Coat hooks, driver- and passenger-side rear
- Compass, located in Driver Information Center- Console, floor, with armrest
- Cruise control, electronic with set and resume speed, steering wheel mounted
- Cup holders, 2 front- Dead pedal, driver- Defogger, rear-window, electric
- Door locks, power programmable with lockout protection- Floor mats, carpeted front
- Gauges, auxiliary, multi-function includes 4 gauges: oil pressure, battery voltage, oil temperature and transmission fluid temperature, mounted on center console forward of shifter
- Glovebox, lockable
- Instrumentation, analog with Driver Information Center display and SS detail, includes speedometer, tachometer, fuel gauge and engine temperature gauge
- Lighting, front reading lamps

Option Packages

Factory Installed Packages

ENGINE, 6.2L V8 SFI

(426 hp [317.6 kW] @ 5900 rpm, 420 lb-ft of torque [567.0 N-m] @ 4600 rpm)

TRANSMISSION, 6-SPEED MANUAL

INTERIOR ACCENT TRIM PACKAGE

includes Black interior with Inferno Orange front leather-appointed seats, accent stitching on steering wheel, shift knob, door armrest, center console and seats. Inferno Orange door trim and instrument panel applique

\$500

- Lighting, interior dome with illuminated entry and theater dimming
- Map pockets, front doors- Mirror, inside rearview autodimming
- Power outlets, 2 auxiliary 1 located in center console storage area and 1 located at front of center console
- Remote Keyless Entry
- Seat adjuster, driver, 6-way power (fore/aft, up/down, tilt) with power recliner
- Seat adjuster, front passenger 2-way manual (fore/aft) with power recliner
- Seat trim, leather-appointed front seats- Seats, heated driver and front passenger
- Shift knob, leather-wrapped- Sill plate, Chevrolet
- Steering column, manual rake and telescopic- Steering wheel, 3-spoke leather-wrapped
- Theft-deterrent system, PASS-Key III - Trunk release, remote, located on driver-side
- Universal Home Remote includes garage door opener, 3-channel programmable
- Visors, driver and front passenger vanity mirrors, covered
- Windows, power with driver and passenger Express-Down/Up

Exterior

- Tires, P245/45R20 front and P275/40R20 rear, blackwall, summer
- Door handles, body-color
- Fascias, front and rear body-color, SS-specific with unique front grille and rear diffuser, lower extension, front air scoop and brake cooling slots
- Fog lamps (When (WRS) RS Package is ordered, fog lamps act as Daytime Running Lamps.)
- Headlamps, halogen composite with automatic exterior lamp control
- Hood blanket with debossed Chevrolet bowtie
- Mirrors, outside heated power-adjustable and driver-side auto-dimming, body-color
- Molding, Black roof ditch- Moldings, body-color lower rocker
- Spare tire and wheel, not desired tire sealant and inflator kit in place of spare tire
- Spoiler, rear- Tire sealant and inflator kit in place of spare tire
- Wheels, 20" x 8" (50.8 cm x 20.3 cm) front and 20" x 9" (50.8 cm x 22.9 cm) rear flangeless, painted aluminum with sterling silver finish (Midnight Silver finish when (WRS) RS Package is ordered.)
- Wipers, front intermittent

Safety

- Air conditioning, single-zone manual- Air filtration system with pollen filter
- Cargo convenience net- Coat hooks, driver- and passenger-side rear
- Compass, located in Driver Information Center - Console, floor, with armrest
- Cruise control, electronic with set and resume speed, steering wheel mounted
- Cup holders, 2 front- Dead pedal, driver- Defogger, rear-window, electric
- Door locks, power programmable with lockout protection- Floor mats, carpeted front
- Gauges, auxiliary, multi-function includes 4 gauges: oil pressure, battery voltage, oil temperature and transmission fluid temperature, mounted on center console forward of shifter
- Glovebox, lockable
- Instrumentation, analog with Driver Information Center display and SS detail, includes speedometer, tachometer, fuel gauge and engine temperature gauge
- Lighting, front reading lamps
- Lighting, interior dome with illuminated entry and theater dimming
- Map pockets, front doors- Mirror, inside rearview autodimming
- Power outlets, 2 auxiliary 1 located in center console storage area and 1 located at front of center console
- Remote Keyless Entry
- Seat adjuster, driver, 6-way power (fore/aft, up/down, tilt) with power recliner
- Seat adjuster, front passenger 2-way manual (fore/aft) with power recliner
- Seat trim, leather-appointed front seats- Seats, heated driver and front passenger
- Shift knob, leather-wrapped- Sill plate, Chevrolet
- Steering column, manual rake and telescopic- Steering wheel, 3-spoke leather-wrapped
- Theft-deterrent system, PASS-Key III - Trunk release, remote, located on driver-side
- Universal Home Remote includes garage door opener, 3-channel programmable
- Visors, driver and front passenger vanity mirrors, covered
- Windows, power with driver and passenger Express-Down/Up

Mechanical

- Alternator, 150 amps- Axle, 3.45 ratio
- Battery, maintenance-free with rundown protection and retained accessory power
- Brakes, 4-wheel antilock, 4-wheel disc (Brembo performance 4 piston front and 4 piston rear brakes.)
- Differential, limited slip
- Engine, 6.2L V8 SFI (426 hp [317.6 kW] @ 5900 rpm, 420 lb-ft of torque [567.0 N-m] @ 4600 rpm) (Requires (MN6) 6-speed manual transmission.)
- Exhaust, dual-outlet stainless-steel with polished tips - Rear wheel drive
- Steering, power, variable ratio- Suspension, Performance

LICENSE PLATE BRACKET, FRONT

AXLE, 3.45 RATIO

EMISSIONS, FEDERAL REQUIREMENTS

INFERNO ORANGE METALLIC

\$325

STANDARD PAINT

PREFERRED EQUIPMENT GROUP

includes Standard Equipment

AUDIO SYSTEM, AM/FM STEREO WITH CD-ROM AND MP3 PLAYBACK

music navigator, Graphic Information Display (GID) and auxiliary input jack, includes outside temperature display

INFERNO ORANGE, LEATHER-APPOINTED FRONT SEATS

SEATS, FRONT SPORT BUCKET

includes adjustable head restraints and folding rear seat with trunk pass-through

WHEELS, 20" X 8" (50.8 CM X 20.3 CM) FRONT AND 20" X 9" (50.8 CM X 22.9 CM) REAR FLANGELESS, PAINTED ALUMINUM with sterling silver finish

Option Packages Total

\$825

- Transmission, 6-speed manual

AUTOPARK

Dallas

Auto Park Dallas

View this car on our website at autoparkdallas.com/6965568

Website: autoparkdallas.com

Phone: (214) 945-2601

Map: [2061 S Stemmons Fwy, Lewisville, TX 75067](#)

