



2009 Chevrolet Corvette w/ 4LT Package & Magnetic Ride!

Website Price \$32,995

View this vehicle on our website at autoparkdallas.com



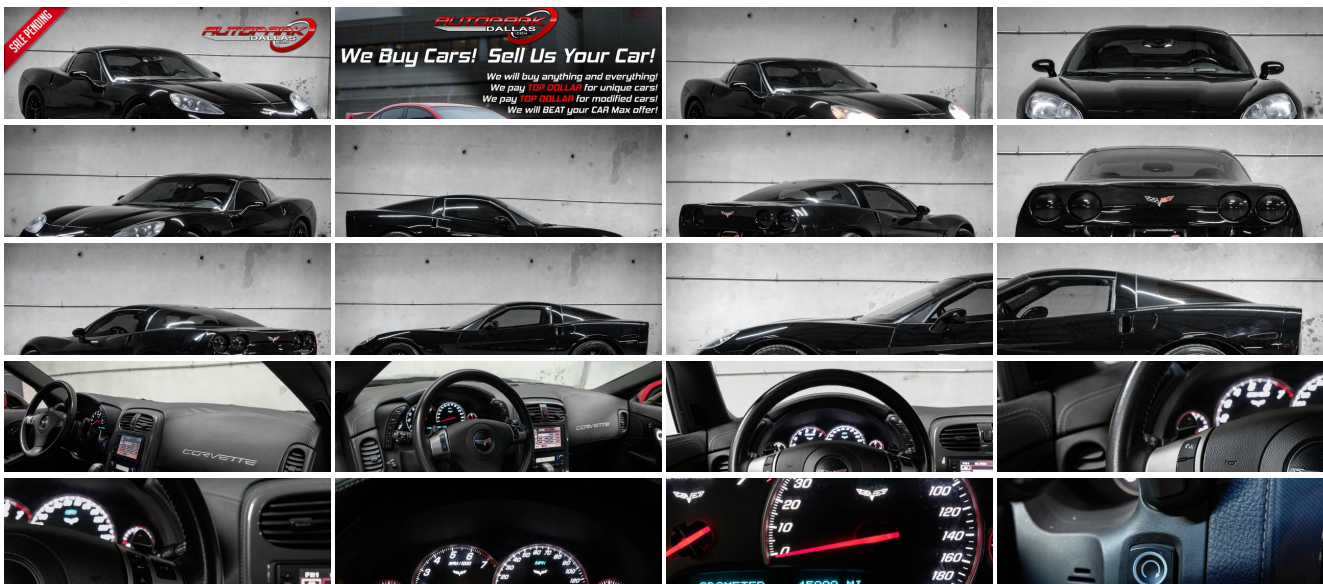
(214) 945-2601

2061 S Stemmons Fwy , Lewisville, TX 75067

Photos

Details

Contact



Specifications:

Year:	2009
VIN:	1G1YY26W895105168
Make:	Chevrolet
Model/Trim:	Corvette w/ 4LT Package & Magnetic Ride!
Condition:	Pre-Owned
Body:	Coupe
Exterior:	Black
Engine:	ENGINE, 6.2L V8 SFI
Interior:	Ebony Leather
Transmission:	TRANSMISSION, 6-SPEED PADDLE SHIFT WITH AUTOMATIC MODES
Mileage:	45,991
Drivetrain:	Rear Wheel Drive
Economy:	City 15 / Highway 25

Vehicle Description

AutoPark Dallas is thrilled to offer you this Sick Looking Blacked Out 2009 Chevrolet Corvette with 4LT Package & the RARE Magnetic Selective Ride Control for sale! There is not a soul that does not know the Corvette, with its signature look and being a low-profile sport car. These bald eagle screaming U.S. born beauties are a thrill to drive and always stand out in any crowded car meet or a parking lot. If you're looking for a beautiful American Sports Car, then come swing by to check out this Corvette parked in our indoor 16,000 Sq Ft Showroom located in Dallas , Texas amongst our inventory of 100+ other Performance / Modified and Luxury cars!

2009 Chevrolet Corvette

* 4LT Package !*

* Magnetic Selective Ride Control !*

* LOW MILEAGE !*

* Roof Package !*

Solid Black Exterior

* Both Transparent & Color-Matching T-Tops !*

Black Leather Interior

* Blacked-Out Tail Lights !*

* C7 Z06 Corvette Gloss Black Wheels !*

* Aftermarket Grilled Rotors !*

Navigation

Heated Driver & Passenger Seat

Dual Climate Controls

Digital Heads-Up Display

Push Button Start

Driver Seat Memory

BOSE Premium Audio System

Cruise Control

Comfort Access Keyless Entry

Daytime Running Lights

Steering Wheel Mounted Controls

Manual Mode w/ Paddle Shifters

6.2L V8 SFI Engine

6-Speed Automatic Transmission

Rear Wheel Drive

Professionally Detailed!

Well Maintained!

* Free CarFax Report !*

AND SO MUCH MORE!!!

Financing is available!

Check out our Payment Calculator to get an estimate on your monthly payments!

OR

Get pre-approved in no time by filling out a credit application on the 'Finance' section of our website!

We also offer MANY different Extended Warranty options!

Check out our Google Reviews by *Clicking* this LINK!

Referrals and Testimonials is what our business is built on!

The team here at AutoPark Dallas, is dedicated to offering a level of customer service not usually found in the automobile industry. Thanks to years of extensive car buying / selling experience, we pursue quality used and new vehicles that are hand-picked from factory sources. Our love for automobiles and dislike of traditional dealership tactics is what motivates us to provide the service we do! The pride we take in continuing this service long after the vehicle has been delivered is what we strive for! Looking forward to making every effort to see that our customer is completely satisfied and a friend for life!

Pre-purchase inspections are always welcomed!

We also offer airport pick-up, competitive financing options, free CarFax Reports, Car Shipping nationwide, Extended Warranty plans, and so much more!

Trade-In(s) are always accepted or sell us your used car (MODIFIED OR NOT)! Please call or text for more information about Trade-Ins or selling your car to us @ (214) 945-2601!

#(214) 945-2601

Call or Text **Anytime!**

Se habla Español

WE BUY CARS!

WWW.AUTOPARKDALLAS.COM

Installed Options

Option Packages

Interior

- Air conditioning, dual-zone automatic climate control with individual climate settings for driver and right-front passenger and outside temperature display
- Air filtration system with pollen filter- Cargo net, in rear compartment area
- Console, floor 2 covered cup holders, ashtray with cigar lighter, auxiliary power outlet and CD storage
- Cruise control, electronic with set and resume speed
- Custom Leather Wrapped Interior Package features leather-wrapped upper instrument panel, upper door trim panels and console storage cover. Exclusive leather color and two-tone design includes seat headrest "tonal" crossed flag embroidery and enhanced armrest padding. Special Bias pattern console trim plate
- Defogger, rear-window, electric
- Door locks, power programmable with lockout protection- Floor mats, carpeted
- Hatch release, push button open with power hatch pulldown
- Head-Up Display with dot-matrix readouts for street mode, track mode with g-meter, vehicle speed, engine rpm and readings from key gauges including water temperature and oil pressure
- Instrumentation, electronic analog with Driver Information Center and 2-line display
- Keyless Access with push button start and 2 remote transmitters that enable automatic door unlock and open by touching door switch
- Lighting, interior with courtesy, cargo and glovebox- Luggage shade
- Memory Package recalls 2 driver "presets" for 6-way power seat, outside mirrors and telescoping steering column
- Mirror, inside rearview auto-dimming with compass, includes dual reading lights
- Oil life monitoring system- Seat adjuster, driver 6-way power
- Seat adjuster, front passenger 6-way power
- Seats, Sport front bucket with perforated leather seating surfaces includes back angle adjustment, adjustable lumbar and side bolsters
- Seats, heated driver and front passenger - Steering column, Tilt-Wheel, manual
- Steering column, power telescopic with manual tilt
- Steering wheel controls, mounted audio controls
- Steering wheel, 3-spoke leather-wrapped
- Storage with lockable glovebox, center console and 2 rear compartments with covers
- Theft-deterrent system, vehicle push button start, immobilizer and audible visual alarm
- Universal Home Remote includes garage door opener, 3-channel programmable, located on driver visor
- Visors, driver and front passenger illuminated vanity mirrors
- Windows, power with driver and passenger Express-Down

Exterior

- Roof panel, 1-piece body-color, removable
- Tires, front P245/40ZR18 Eagle F1 extended mobility
- Tires, rear P285/35ZR19 Eagle F1 extended mobility
- Wheels, 5-split spoke, Silver-painted aluminum 18" x 8.5" (45.7 cm x 21.6 cm), front and 19" x 10.0 " (48.3 cm x 25.4 cm), rear
- Fog lamps, front, integral in front fascia- Glass, Solar-Ray light-tinted
- Headlamps, dual projector lamps, Xenon, High-Intensity Discharge (HID) low-beam tungsten-halogen high-beam with automatic exterior lamp control
- Mirrors, outside heated power-adjustable and driver-side auto-dimming, body- color
- Wipers, front intermittent

Safety

- Air conditioning, dual-zone automatic climate control with individual climate settings for driver and right-front passenger and outside temperature display
- Air filtration system with pollen filter- Cargo net, in rear compartment area
- Console, floor 2 covered cup holders, ashtray with cigar lighter, auxiliary power outlet and CD storage
- Cruise control, electronic with set and resume speed
- Custom Leather features leather-wrapped upper instrument panel, upper door trim panels and console storage cover. Exclusive leather color and two-tone design includes seat headrest "tonal" crossed flag embroidery and enhanced armrest padding. Special Bias pattern console trim plate
- Defogger, rear-window, electric
- Door locks, power programmable with lockout protection- Floor mats, carpeted
- Hatch release, push button open with power hatch pulldown
- Head-Up Display with dot-matrix readouts for street mode, track mode with g-meter, vehicle speed, engine rpm and readings from key gauges including water temperature and oil pressure
- Instrumentation, electronic analog with Driver Information Center and 2-line display
- Keyless Access with push button start and 2 remote transmitters that enable automatic door unlock and open by touching door switch
- Lighting, interior with courtesy, cargo and glovebox- Luggage shade
- Memory Package recalls 2 driver "presets" for 6-way power seat, outside mirrors and telescoping steering column

Factory Installed Packages

ENGINE, 6.2L V8 SFI

(430 hp [320.6 kW] @ 5900 rpm, 424 lb-ft of torque [572.4 N-m] @ 4600 rpm)

TRANSMISSION, 6-SPEED PADDLE SHIFT WITH AUTOMATIC MODES

(Includes (GM8) 2.56 axle ratio.) \$1,250

LICENSE PLATE BRACKET, FRONT

\$15

MAGNETIC SELECTIVE RIDE CONTROL

for ultimate driver control and comfort through the use of driver-selected Tour or Sport modes. \$1,995

ROOF PACKAGE

includes (CF7) 1-piece body-color roof panel and (CC3) 1-piece transparent roof panel \$1,400

REAR AXLE, 2.73 RATIO, LIMITED-SLIP, PERFORMANCE

\$395

EMISSIONS, FEDERAL REQUIREMENTS

BLACK

STANDARD PAINT

PREFERRED EQUIPMENT GROUP

includes Standard Equipment \$8,055

AUDIO SYSTEM WITH NAVIGATION, AM/FM STEREO WITH CD PLAYER, MP3 PLAYBACK AND DVD-BASED TOUCH-SCREEN NAVIGATION

seek-and-scan, digital clock, auto-tone control, Radio Data System (RDS), automatic volume, TheftLock, 6.5" LCD color display and voice recognition. Includes (U65) Bose premium 7-speaker system \$1,750

EBONY, CUSTOM LEATHER WRAPPED SEATING SURFACES

(Custom leather wrap with embroidery. Includes specific console trim plate.)

SEATS, SPORT FRONT BUCKET WITH PERFORATED LEATHER SEATING SURFACES

includes back angle adjustment, adjustable lumbar and side bolsters

Option Packages Total

\$14,860

- Mirror, inside rearview auto-dimming with compass, includes dual reading lights
- Oil life monitoring system- Seat adjuster, driver 6-way power
- Seat adjuster, front passenger 6-way power
- Seats, Sport front bucket with perforated leather seating surfaces includes back angle adjustment, adjustable lumbar and side bolsters
- Seats, heated driver and front passenger - Steering column, Tilt-Wheel, manual
- Steering column, power telescopic with manual tilt
- Steering wheel controls, mounted audio controls
- Steering wheel, 3-spoke leather-wrapped
- Storage with lockable glovebox, center console and 2 rear compartments with covers
- Theft-deterrent system, vehicle push button start, immobilizer and audible visual alarm
- Universal Home Remote includes garage door opener, 3-channel programmable, located on driver visor
- Visors, driver and front passenger illuminated vanity mirrors
- Windows, power with driver and passenger Express-Down

Mechanical

- Rear axle, 3.42 ratio, limited slip (Included and only available with (MN6) 6-speed manual transmission.)
- Transmission, 6-speed manual, short-throw (Includes (GU6) 3.42 axle ratio.)
- Active handling improves traction and enhances vehicle stability
- Brakes, 4-wheel antilock, 4-wheel disc- Engine access, rear-opening hood
- Engine, 6.2L V8 SFI (430 hp [320.6 kW] @ 5900 rpm, 424 lb-ft of torque [572.4 N-m] @ 4600 rpm)
- Exhaust, aluminized stainless-steel with 3" polished stainless-steel tips
- Rear wheel drive- Steering, power, speed-sensitive rack-and-pinion, variable ratio
- Suspension, 4-wheel independent includes transverse composite springs



Auto Park Dallas

View this car on our website at autoparkdallas.com/6965539

Website: autoparkdallas.com

Phone: (214) 945-2601

Map: [2061 S Stemmons Fwy, Lewisville, TX 75067](#)

