



2007 Chevrolet Corvette w/ 3LT Package!

Website Price \$27,995

View this vehicle on our website at autoparkdallas.com



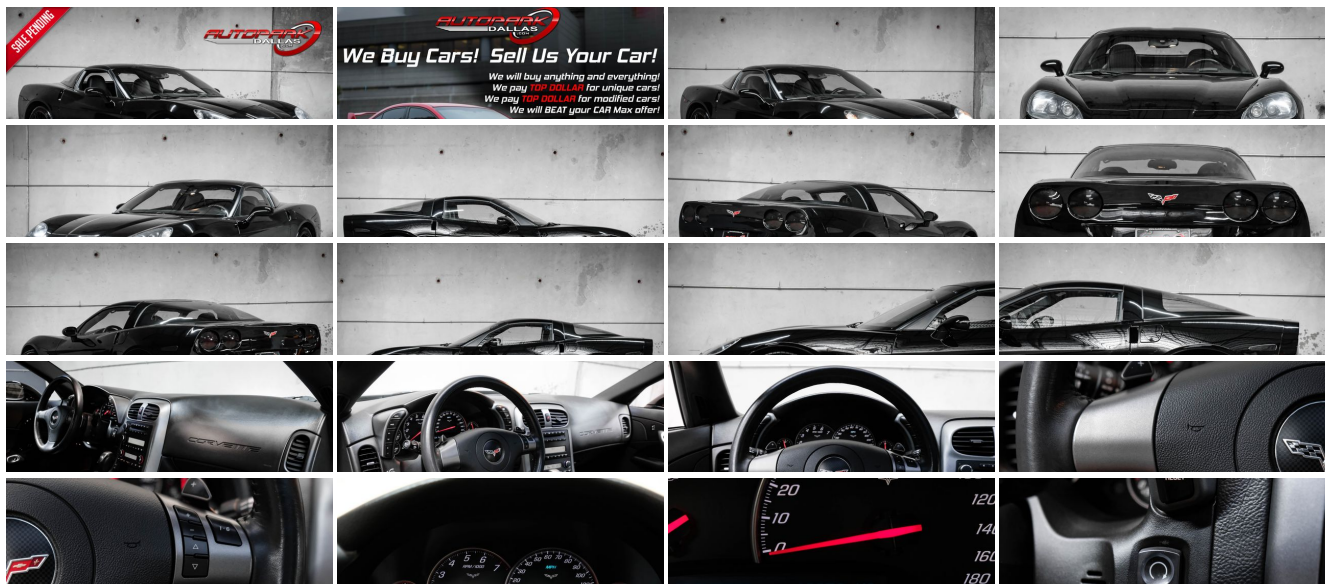
(214) 945-2601

2061 S Stemmons Fwy , Lewisville, TX 75067

Photos

Details

Contact



Specifications:

Year:	2007
VIN:	1G1YY26U775105321
Make:	Chevrolet
Model/Trim:	Corvette w/ 3LT Package!
Condition:	Pre-Owned
Body:	Coupe
Exterior:	Black
Engine:	ENGINE, 6.0L V8 SFI
Interior:	Ebony Leather
Transmission:	TRANSMISSION, 6-SPEED PADDLE SHIFT WITH AUTOMATIC MODES
Mileage:	62,860
Drivetrain:	Rear Wheel Drive
Economy:	City 17 / Highway 27

Vehicle Description

AutoPark Dallas is thrilled to offer you this LOW MILEAGE 2007 Chevrolet Corvette with 3LT Package for sale! There is not a single person that does not know what the Chevrolet Corvette is with its signature look and being the notorious low-profile sports car. These bald eagle screaming U.S. born beauties are a thrill to drive and always stand out in any crowded car meet or parking lot. Our Corvette here APD was handled with care as the condition of this Corvette is amazing, well loaded straight from the factory, and best of all has the 3LT Preferred Equipment Package that gives the extra bit of luxury feeling! Come swing by to check out this Corvette parked in our indoor 16,000 Sq Ft Showroom located in Dallas , Texas amongst our inventory of 100+ other Performance / Modified and Luxury cars!

2007 Chevrolet Corvette

* Clean CarFax !*

* 2 Sets of Keys !*

* 3LT Package !*

MODIFICATIONS!

C7 Z06 Corvette Gloss Black Wheels

Chrome Mesh Grille

Rear Chrome Mesh Diffuser Filler

Blacked-Out Tail Lights

Gloss Red 'Corvette' Caliper Covers

STOCK!

Solid Black Exterior

Transparent Removable T-Top

Ebony Black Leather Interior

Heated Front Row Seats

Dual Climate Controls

Push Button Start

BOSE Premium Audio System

Digital Heads-Up Display

Driver Seat Memory
Cruise Control
Comfort Access Keyless Entry
Daytime Running Lights
Manual Mode w/ Paddle Shifters
6.0L V8 SFI Engine
6-Speed Automatic Transmission
Rear Wheel Drive
Professionally Detailed!
Well Maintained!
*** Free CarFax Report !***
AND SO MUCH MORE!!!

Financing is available!

Check out our Payment Calculator to get an estimate on your monthly payments!

OR

Get pre-approved in no time by filling out a credit application on the 'Finance' section of our website!

We also offer MANY different Extended Warranty options!

Check out our Google Reviews by ***Clicking*** this LINK!

Referrals and Testimonials is what our business is built on!

The team here at AutoPark Dallas, is dedicated to offering a level of customer service not usually found in the automobile industry. Thanks to years of extensive car buying / selling experience, we pursue quality used and new vehicles that are hand-picked from factory sources. Our love for automobiles and dislike of traditional dealership tactics is what motivates us to provide the service we do! The pride we take in continuing this service long after the vehicle has been delivered is what we strive for! Looking forward to making every effort to see that our customer is completely satisfied and a friend for life!

Pre-purchase inspections are always welcomed!

We also offer airport pick-up, competitive financing options, free CarFax Reports, Car Shipping nationwide, Extended Warranty plans, and so much more!

Trade-In(s) are always accepted or sell us your used car (MODIFIED OR NOT)! Please call or text for more information about Trade-Ins or selling your car to us @ (214) 945-2601!

#(214) 945-2601

Call or Text **Anytime!**

Se habla Español

WE BUY CARS!

WWW.AUTOPARKDALLAS.COM

Installed Options

Interior

- Air conditioning, dual-zone automatic climate control with individual climate settings for driver and right-front passenger and outside temperature display
- Air filtration system with pollen filter- Antenna, integral, hidden
- Audio system, AM/FM stereo with CD player and MP3 playback, seek-and-scan, digital clock, auto-tone control, Radio Data System (RDS), automatic volume and Theftlock. Includes (U66) 7-speaker system
- Console, floor, 2 covered cup holders, ashtray with cigar lighter, auxiliary power outlet and CD storage
- Cruise control, electronic with set and resume speed - Defogger, rear-window, electric
- Door locks, power programmable with lockout protection- Enhanced Acoustic Package
- Floor mats, carpeted
- Hatch release, push button open (Includes power hatch pulldown.)
- Instrumentation, electronic analog with Driver Information Center and 2-line display
- Keyless Access, with push button start and 2 remote transmitters that enable automatic door unlock and open by touching door switch
- Lighting, interior with courtesy, cargo and glovebox
- Mirror, inside rearview manual day/night, includes dual reading lights
- Oil life monitoring system- Seat adjuster, driver 6-way power
- Seats, front bucket with leather seating surfaces, includes back angle adjustment
- Steering column, Tilt-Wheel, manual- Steering wheel, 3-spoke leather-wrapped
- Storage, with lockable glovebox, center console and 2 rear compartments with covers
- Theft-deterrent system, vehicle, push button start, immobilizer and audible visual alarm
- Tire Pressure Monitor System, air pressure sensors in each tire, pressure display in Driver Information Center
- Visors, driver and front passenger illuminated vanity mirrors
- Windows, power with driver and passenger Express-Down

Exterior

- Roof panel, 1-piece body-color, removable- Daytime Running Lamps
- Fog lamps, front, integral in front fascia- Glass, Solar-Ray light-tinted
- Headlamps, dual projector lamps, Xenon, High-Intensity Discharge (HID) low-beam, tungsten-halogen high-beam with automatic exterior lamp control
- Mirrors, outside heated power-adjustable, body-color- Wipers, front intermittent

Safety

- Air conditioning, dual-zone automatic climate control with individual climate settings for driver and right-front passenger and outside temperature display
- Air filtration system with pollen filter- Antenna, integral, hidden
- Audio system, AM/FM stereo with CD player and MP3 playback, seek-and-scan, digital clock, auto-tone control, Radio Data System (RDS), automatic volume and Theftlock. Includes (U66) 7-speaker system
- Console, floor, 2 covered cup holders, ashtray with cigar lighter, auxiliary power outlet and CD storage
- Cruise control, electronic with set and resume speed - Defogger, rear-window, electric
- Door locks, power programmable with lockout protection- Enhanced Acoustic Package
- Floor mats, carpeted
- Hatch release, push button open (Includes power hatch pulldown.)
- Instrumentation, electronic analog with Driver Information Center and 2-line display
- Keyless Access, with push button start and 2 remote transmitters that enable automatic door unlock and open by touching door switch
- Lighting, interior with courtesy, cargo and glovebox
- Mirror, inside rearview manual day/night, includes dual reading lights
- Oil life monitoring system- Seat adjuster, driver 6-way power
- Seats, front bucket with leather seating surfaces, includes back angle adjustment
- Steering column, Tilt-Wheel, manual- Steering wheel, 3-spoke leather-wrapped
- Storage, with lockable glovebox, center console and 2 rear compartments with covers
- Theft-deterrent system, vehicle, push button start, immobilizer and audible visual alarm
- Tire Pressure Monitor System, air pressure sensors in each tire, pressure display in Driver Information Center
- Visors, driver and front passenger illuminated vanity mirrors

Option Packages

Factory Installed Packages

ENGINE, 6.0L V8 SFI

(400 hp [298.3kW] @ 6000 rpm, 400 lb-ft of torque [542.8 N-m] @ 4400 rpm)

TRANSMISSION, 6-SPEED PADDLE SHIFT WITH AUTOMATIC MODES

(Includes (GM8) 2.56 axle ratio.)

\$1,250

AIR BAGS, FRONTAL AND SIDE-IMPACT, DRIVER AND FRONT PASSENGER WITH PASSENGER SENSING SYSTEM

(Always use safety belts and the correct child restraints for your child's age and size. Even in vehicles equipped with air bags and the Passenger Sensing System, children are safer when properly secured in a rear seat. Never place a rear-facing infant restraint in the front seat of any vehicle with an active frontal air bag. See the vehicle's Owners Manual and child safety seat instructions for more safety information.)

HEAD-UP DISPLAY

with dot-matrix readouts for street mode, track mode with g-meter, vehicle speed, engine rpm and readings from key gauges including water temperature and oil pressure

LICENSE PLATE BRACKET, FRONT

MEMORY PACKAGE

recalls 2 driver "presets" for 6-way power seat, outside mirrors and telescoping steering column

MIRROR, INSIDE REARVIEW AUTO-DIMMING WITH COMPASS

includes dual reading lights

ROOF PANEL, 1-PIECE TRANSPARENT, REMOVABLE

(Included with (C2L) Roof Package.)

\$750

UNIVERSAL HOME REMOTE

includes garage door opener, 3-channel programmable, located on driver visor

XM SATELLITE RADIO.

With a wide variety of programming, XM has something to excite any driver. Whether you want to be entertained or informed, to laugh, think, or sing, XM has the perfect channel for you-coast-to-coast, and in digital-quality sound. 3 trial months-no obligation.

REAR AXLE, 2.56 RATIO, LIMITED SLIP

EMISSIONS, FEDERAL REQUIREMENTS

SOLID PAINT

PREFERRED EQUIPMENT GROUP

includes (A17) Air bags, frontal and side-impact

\$4,045

- Windows, power with driver and passenger Express-Down

Mechanical

- Rear axle, 3.42 ratio, limited slip (Included and only available with (MN6) 6-speed manual transmission.)
- Transmission, 6-speed manual, short-throw (Includes (GU6) 3.42 axle ratio.)
- Wheels, 5-spoke, Silver-painted aluminum, 18" x 8.5" (45.7 cm x 21.6 cm), front and 19" x 10.0" (48.3 cm x 25.4 cm), rear
- Active handling, improves traction and enhances vehicle stability
- Brakes, 4-wheel antilock, 4-wheel disc- Engine access, rear opening hood
- Engine, 6.0L V8 SFI (400 hp [298.3kW] @ 6000 rpm, 400 lb-ft of torque [542.8 N-m] @ 4400 rpm)
- Exhaust, aluminized stainless-steel with 3" polished stainless-steel tips
- Rear wheel drive- Steering, power, speed-sensitive, rack-and-pinion
- Suspension, 4-wheel independent, includes transverse composite springs
- Tires, front P245/40ZR18 Eagle F1, extended mobility
- Tires, rear P285/35ZR19 Eagle F1, extended mobility- Traction control, all-speed

includes (N37) Air bags, frontal and side impact, driver and front passenger, Cargo net, in rear compartment area, (D42) Luggage shade, (AG2) Seat adjuster, front passenger 6-way power, (AQ9) Seats, Sport front bucket with perforated leather seating surfaces, (US9) Audio system, AM/FM stereo with 6-disc in-dash CD changer and MP3 playback, (U2K) XM Satellite Radio, (UK3) Steering wheel controls, mounted audio controls, (UV6) Head-Up Display, (AAB) Memory Package, (DD8) Mirror, inside rearview auto-dimming with compass, (KA1) Seats, heated driver and front passenger, (N37) Steering column, power telescopic with manual tilt, (UG1) Universal Home Remote, (DD0) Mirrors, outside heated power-adjustable and driver-side auto-dimming, body-color

\$4,940

AUDIO SYSTEM, AM/FM STEREO WITH 6-DISC IN-DASH CD CHANGER AND MP3 PLAYBACK

seek-and-scan, digital clock, auto-tone control, Radio Data System (RDS), automatic volume and TheftLock.

HIGHWEAR NUANCE LEATHER SEAT TRIM

SEATS, SPORT FRONT BUCKET WITH PERFORATED LEATHER SEATING SURFACES

includes back angle adjustment, adjustable lumbar and side bolsters

Option Packages Total

\$6,945



Auto Park Dallas

View this car on our website at autoparkdallas.com/6965316

Website: autoparkdallas.com

Phone: (214) 945-2601

Map: [2061 S Stemmons Fwy, Lewisville, TX 75067](#)

