



2013 Chevrolet Express Cargo Van Work Van

Sale Price \$14,976

View this vehicle on our website at 2215de71-f467-425e-b70e-351248ec9e4f.autorevo-websites.com



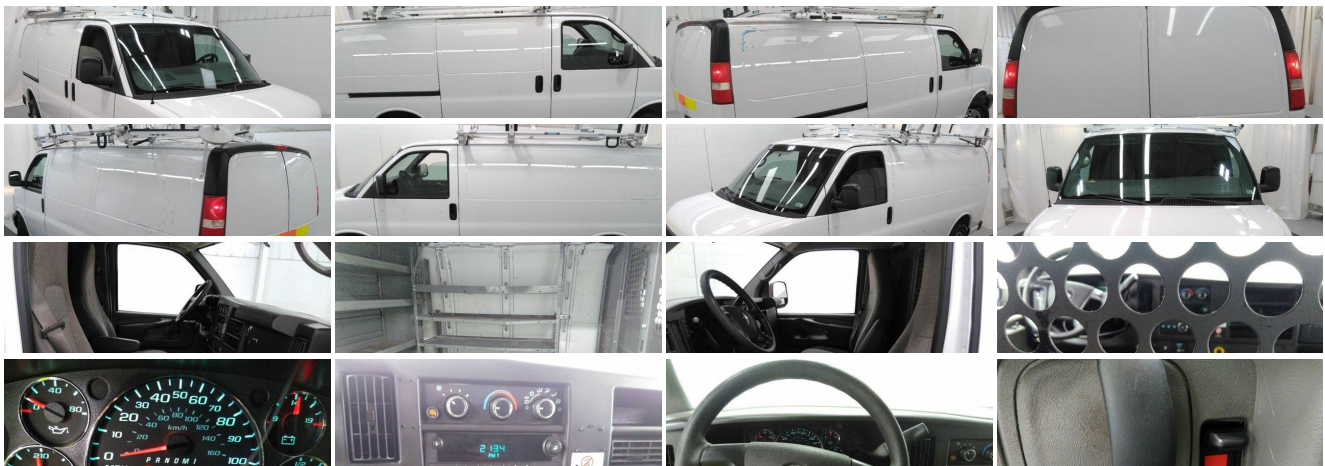
(314) 786-5317

2050 Creve Coeur Mill Road , Maryland Heights, MO 63043

Photos

Details

Contact





Specifications:

Year:	2013
VIN:	1GCWGFC9D1149522
Make:	Chevrolet
Stock:	211584D
Model/Trim:	Express Cargo Van Work Van
Condition:	Pre-Owned
Body:	Minivan/Van
Exterior:	Summit White
Engine:	ENGINE, VORTEC 4.8L V8 SFI FLEXFUEL
Interior:	Medium Pewter
Mileage:	209,738
Drivetrain:	Rear Wheel Drive

Vehicle Description

Summary
Used 2013 Chevrolet Express 2500 Work Van?? Full-size Cargo Van RWD near Ofallon, Ballwin & Wildwood,

Equipment
This vehicle is a certified CARFAX 1-owner. Our dealership has already run the CARFAX report and it is clean. A clean CARFAX is a great asset for resale value in the future. This 2013 Chevrolet Express 2500 has a 4.8 liter 8 Cylinder Engine high output engine. This 3/4 ton van shines with clean polished lines coated with an elegant white finish. This model is rear wheel drive. With the keyless entry system on this vehicle you can pop the trunk without dropping your bags from the store. The shiftable automatic in this model gives you to option to control your gears manually without having to give up the convenience of an automatic transmission. This Chevrolet Express features cruise control for long trips. The FlexFuel capability of this 3/4 ton van allows you to select fuel depending on the price of E85 versus gasoline. Plus, it has ample towing capacity.

Packages
CONVENIENCE PACKAGE; POWER WINDOWS AND DOOR LOCKS: (Includes (A31) power windows and (AU3) power door locks. CONVENIENCE PACKAGE; TILT-WHEEL AND (K34) CRUISE CONTROL. POWER PACKAGE: (Includes (ZQ2) Convenience Package and (DE5) outside heated; power-adjustable; Black mirrors. ALTERNATOR: 145 AMPS. BATTERY: HEAVY-DUTY 770 COLD-CRANKING AMPS; MAINTENANCE-FREE. CONSOLE: ENGINE COVER WITH SWING-OUT STORAGE BIN. CRUISE CONTROL. DIFFERENTIAL: HEAVY-DUTY LOCKING REAR. DOOR LOCKS: POWER WITH LOCK-OUT PROTECTION. MIRRORS: OUTSIDE HEATED POWER-ADJUSTABLE; BLACK; MANUAL-FOLDING. REMOTE KEYLESS ENTRY. WINDOWS: POWER. Equipment listed is based on original vehicle build. Please confirm the accuracy of the included equipment by calling the dealer prior to purchase.

Installed Options

Interior

- Seats, front bucket with vinyl trim and outboard head restraints, includes inboard armrests. (Requires (**W) interior trim.)
- Seating arrangement, driver and front passenger high-back buckets with head restraints and vinyl or cloth trim
- Air conditioning, single-zone manual
- Driver Information Center includes fuel range, average speed, oil life, tire pressure monitoring, fuel used, ice warning, engine hours, average fuel economy, tachometer, and maintenance reminders. Compass and outside temperature available if equipped. (When (FHZ) Dedicated Compressed Natural Gas (CNG) system is ordered, includes average speed, oil life, tire pressure monitoring, ice warning, engine hours, tachometer and maintenance reminders. Compass and outside temperature available if equipped.)
- Tow/haul mode selector, instrument panel-mounted
- Power outlets, 2 auxiliary on engine console cover with covers, 12-volt
- Console, engine cover with open storage bin
- Floor covering, full-length Black rubberized-vinyl (Not available with (YF2) Ambulance Package or (RFM) rear floor covering delete.)
- Steering wheel, steel sleeve column with theft-deterrent locking feature, Black
- Instrumentation, analog with speedometer, odometer with trip odometer, fuel level, voltmeter, engine temperature and oil pressure
- Oil life monitor- Warning tones, headlamp on and key-in-ignition

Option Packages

Factory Installed Packages

ENGINE, VORTEC 4.8L V8 SFI FLEXFUEL
(280 hp [208.8 kW] @ 5200 rpm, 295 lb-ft of torque [398.3 N-m] @ 4600 rpm)

- Theft-deterrent system, vehicle, PASS-Key III- Defogger, side windows
- Cup holders, 3 on the engine console cover
- Trim panels, hinged rear side doors and hinged rear doors
- Headliner, cloth, over driver and passenger
- Visors, driver and front passenger, cloth, padded- Assist handle, front passenger
- Lighting, interior with 2 dome lights, defeat switch and door handle-activated switches

Exterior

- Wheels, 4 - 16" x 6.5" (40.6 cm x 16.5 cm) steel includes Gray center caps and steel spare (Standard on CG23405, CG23705, CG33405 and CG33705 models.)
- Tires, front LT245/75R16E all-season, blackwall (Standard on the CG23405, CG23705, CG33405 and CG33705 models.)
- Tires, rear LT245/75R16E all-season, blackwall (Standard on the CG23405, CG23705, CG33405 and CG33705 models.)
- Tire, spare LT245/75R16E all-season, blackwall located at rear underbody of vehicle (Standard on the CG23405, CG23705, CG33405 and CG33705 models.)
- Door, swing-out passenger-side, 60/40 split
- Bumpers, front and rear painted Black with step-pad (Deleted when (ZR7) Chrome Appearance Package is ordered.)
- Grille, Black composite with single rectangular halogen headlamps (Not available with (ZR7) Chrome Appearance Package.)
- Headlamps, single halogen (Not available with (ZR7) Chrome Appearance Package.)
- Mirrors, outside manual, Black- Glass, Solar-Ray light-tinted, all windows
- Wipers, front intermittent wet-arm with pulse washers- License plate kit, front

Safety

- Seats, front bucket with vinyl trim and outboard head restraints, includes inboard armrests. (Requires (**W) interior trim.)
- Seating arrangement, driver and front passenger high-back buckets with head restraints and vinyl or cloth trim
- Air conditioning, single-zone manual
- Driver Information Center includes fuel range, average speed, oil life, tire pressure monitoring, fuel used, ice warning, engine hours, average fuel economy, tachometer, and maintenance reminders. Compass and outside temperature available if equipped. (When (FHZ) Dedicated Compressed Natural Gas (CNG) system is ordered, includes average speed, oil life, tire pressure monitoring, ice warning, engine hours, tachometer and maintenance reminders. Compass and outside temperature available if equipped.)
- Tow/haul mode selector, instrument panel-mounted
- Power outlets, 2 auxiliary on engine console cover with covers, 12-volt
- Console, engine cover with open storage bin
- Floor covering, full-length Black rubberized-vinyl (Not available with (YF2) Ambulance Package or (RFM) rear floor covering delete.)
- Steering wheel, steel sleeve column with theft-deterrent locking feature, Black
- Instrumentation, analog with speedometer, odometer with trip odometer, fuel level, voltmeter, engine temperature and oil pressure
- Oil life monitor- Warning tones, headlamp on and key-in-ignition
- Theft-deterrent system, vehicle, PASS-Key III- Defogger, side windows
- Cup holders, 3 on the engine console cover
- Trim panels, hinged rear side doors and hinged rear doors
- Headliner, cloth, over driver and passenger
- Visors, driver and front passenger, cloth, padded- Assist handle, front passenger
- Lighting, interior with 2 dome lights, defeat switch and door handle-activated switches

Mechanical

- Transmission, 6-speed automatic, heavy-duty, electronically controlled with overdrive tow/haul mode and internal transmission oil cooler (Standard on CG23405, CG23705, CG33405 and CG33705 models. Requires (L20) Vortec 4.8L V8 SFI FlexFuel engine or (L96) Vortec 6.0L V8 SFI FlexFuel engine or (LC8) Gaseous 6.0L V8 SFI engine. Reference the Engine/Axle page for availability.)
- Engine, Vortec 4.8L V8 SFI FlexFuel (280 hp [208.8 kW] @ 5200 rpm, 295 lb-ft of torque [398.3 N-m] @ 4600 rpm) (Includes external engine oil cooler. Standard on CG23405, CG23705, CG33405 and CG33705 models. Reference the Engine/Axle page for availability.)
- Rear axle, 3.42 ratio (Standard on CG13405, CH13405, CG23405, CG23705, CG33405 and CG33705 models. Required with (LU3) Vortec 4.3L V6 MFI engine, (L20) Vortec 4.8L V8 SFI FlexFuel engine, (L96) Vortec 6.0L V8 SFI FlexFuel or (LC8) Gaseous 6.0L V8 SFI engine. Available with (LMF) Vortec 5.3L V8 SFI FlexFuel engine. Reference the Engine/Axle page for availability.)
- Body, standard
- Transmission oil cooler, external (Included and only available with (L20) Vortec 4.8L V8 SFI FlexFuel engine or (L96) Vortec 6.0L V8 SFI FlexFuel engine.)
- Rear wheel drive
- Battery, 600 cold-cranking amps, maintenance-free with rundown protection and retained accessory power
- Alternator, 105 amps (Not available with CG13405 or CH13405 models.)
- Frame, full-length box ladder-type

- GVWR, 8600 lbs. (3901 kg) (Standard on CG23405 or CG23705 models. Reference the Engine/Axle page for availability.)
- Suspension, front independent with coil springs and stabilizer bar (Requires CG13405, CG23405, CG23705, CG33405 and CG33705 models.)
- Suspension, rear hypoid drive axle with multi-leaf springs- Steering, power
- Brakes, 4-wheel antilock, 4-wheel disc
- Fuel tank capacity, mid-frame and approximately 31 gallons (117.3L)
- Exhaust, aluminized stainless-steel muffler and tailpipe

Continental Auto Sales

Continental Auto Sales

View this car on our website at 2215de71-f467-425e-b70e-351248ec9e4f.autorevo-websites.com/6961291

Website: 2215de71-f467-425e-b70e-351248ec9e4f.autorevo-websites.com

Phone: (314) 786-5317

Map: [2050 Creve Coeur Mill Road , Maryland Heights, MO 63043](#)

