



2020 Nissan Altima 2.5 SR

Our Price \$25,995

View this vehicle on our website at autodepotcalexico.com

Auto Depot of Calexico

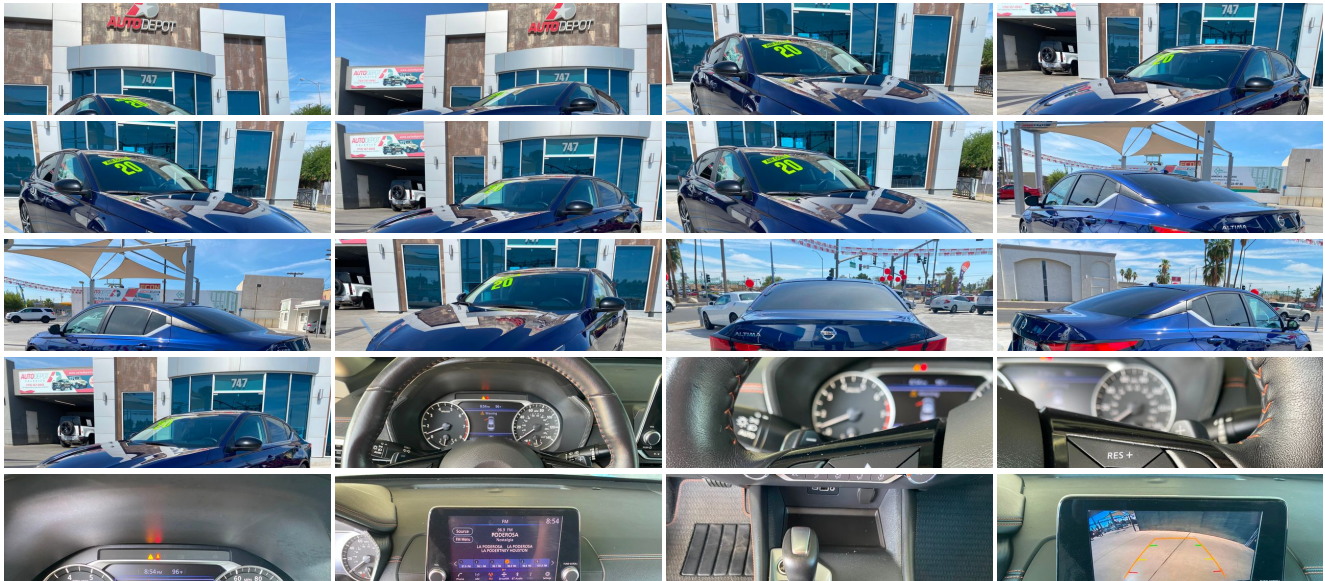
760-357-0043

747 Imperial Ave , Calexico, CA 92231

Photos

Details

Contact



Specifications:

Year:	2020
VIN:	1N4BL4CV6LC100840
Make:	Nissan
Stock:	6030
Model/Trim:	Altima 2.5 SR
Condition:	Pre-Owned
Body:	Sedan
Exterior:	Deep Blue Pearl
Engine:	Engine: 2.5L DOHC 16-Valve 4-Cylinder
Interior:	Sport Leather/Cloth
Mileage:	44,404
Drivetrain:	Front Wheel Drive
Economy:	City 27 / Highway 37

Vehicle Description

Installed Options

Interior

- FOB Controls -inc: Cargo Access and Remote Engine Start
- Gauges -inc: Speedometer, Odometer, Engine Coolant Temp, Tachometer, Trip Odometer and Trip Computer
- Power 1st Row Windows w/Driver 1-Touch Up/Down
- Power Door Locks w/Autolock Feature- Power Rear Windows
- Proximity Key For Doors And Push Button Start
- Remote Keyless Entry w/Integrated Key Transmitter, Illuminated Entry, Illuminated Ignition Switch and Panic Button
- Trip Computer- 1 12V DC Power Outlet- 2 Seatback Storage Pockets
- 60-40 Folding Bench Front Facing Fold Forward Seatback Rear Seat - Air Filtration
- Analog Appearance- Cargo Area Concealed Storage- Cargo Space Lights
- Carpet Floor Trim and Carpet Trunk Lid/Rear Cargo Door Trim
- Cruise Control w/Steering Wheel Controls- Day-Night Rearview Mirror
- Delayed Accessory Power
- Driver And Passenger Visor Vanity Mirrors w/Driver And Passenger Illumination, Driver And Passenger Auxiliary Mirror
- Driver Foot Rest- Driver Seat- Engine Immobilizer- Fade-To-Off Interior Lighting
- Front And Rear Map Lights- Front Center Armrest and Rear Center Armrest
- Front Cupholder
- Front Sport Bucket Seats -inc: 8-way power driver's seat and 4-way manual front passenger's seat
- Full Carpet Floor Covering- Full Cloth Headliner
- Full Floor Console w/Covered Storage, Mini Overhead Console w/Storage and 1 12V DC Power Outlet
- HVAC -inc: Underseat Ducts
- Instrument Panel Bin, Driver / Passenger And Rear Door Bins and Audio Media Storage
- Interior Trim -inc: Metal-Look Instrument Panel Insert, Piano Black Door Panel Insert, Simulated Carbon Fiber/Metal-Look Console Insert and Chrome/Metal-Look Interior Accents
- Leather/Metal-Look Gear Shifter Material- Leatherette Door Trim Insert
- Locking Glove Box
- Manual Adjustable Front Head Restraints and Fixed Rear Head Restraints
- Manual Air Conditioning- Manual Tilt/Telescoping Steering Column
- NissanConnect Selective Service Internet Access- Outside Temp Gauge
- Passenger Seat- Perimeter Alarm- Rear Cupholder
- Remote Releases -inc: Power Cargo Access and Mechanical Fuel
- Seats w/Vinyl Back Material- Sport Leather/Metal-Look Steering Wheel
- Sport Seat Trim -inc: unique color stitching - Systems Monitor- Valet Function

Exterior

- Black Grille w/Chrome Accents- Black Power Side Mirrors w/Manual Folding

Option Packages

Factory Installed Packages

DEEP BLUE PEARL

SPORT, SPORT SEAT TRIM

-inc: unique color stitching

- Black Side Windows 1 mm and Black Front Windshield 1 mm
- Body-Colored Door Handles- Body-Colored Front Bumper
- Body-Colored Rear Bumper w/Black Rub Strip/Fascia Accent- Clearcoat Paint
- Compact Spare Tire Mounted Inside Under Cargo- Fixed Rear Window w/Defroster
- Galvanized Steel/Aluminum Panels
- Intelligent Auto Headlights (i-Ah) Auto On/Off Projector Beam Led Low/High Beam Daytime Running Auto High-Beam Headlamps w/Delay-Off
- Light Tinted Glass- Speed Sensitive Variable Intermittent Wipers- Steel Spare Wheel
- Tires: 235/40R19 AS- Trunk Rear Cargo Access- Wheels: 19" Alloy

Safety

- FOB Controls -inc: Cargo Access and Remote Engine Start
- Gauges -inc: Speedometer, Odometer, Engine Coolant Temp, Tachometer, Trip Odometer and Trip Computer
- Power 1st Row Windows w/Driver 1-Touch Up/Down
- Power Door Locks w/Autolock Feature- Power Rear Windows
- Proximity Key For Doors And Push Button Start
- Remote Keyless Entry w/Integrated Key Transmitter, Illuminated Entry, Illuminated Ignition Switch and Panic Button
- Trip Computer- 1 12V DC Power Outlet- 2 Seatback Storage Pockets
- 60-40 Folding Bench Front Facing Fold Forward Seatback Rear Seat - Air Filtration
- Analog Appearance- Cargo Area Concealed Storage- Cargo Space Lights
- Carpet Floor Trim and Carpet Trunk Lid/Rear Cargo Door Trim
- Cruise Control w/Steering Wheel Controls- Day-Night Rearview Mirror
- Delayed Accessory Power
- Driver And Passenger Visor Vanity Mirrors w/Driver And Passenger Illumination, Driver And Passenger Auxiliary Mirror
- Driver Foot Rest- Driver Seat- Engine Immobilizer- Fade-To-Off Interior Lighting
- Front And Rear Map Lights- Front Center Armrest and Rear Center Armrest
- Front Cupholder
- Front Sport Bucket Seats -inc: 8-way power driver's seat and 4-way manual front passenger's seat
- Full Carpet Floor Covering- Full Cloth Headliner
- Full Floor Console w/Covered Storage, Mini Overhead Console w/Storage and 1 12V DC Power Outlet
- HVAC -inc: Underseat Ducts
- Instrument Panel Bin, Driver / Passenger And Rear Door Bins and Audio Media Storage
- Interior Trim -inc: Metal-Look Instrument Panel Insert, Piano Black Door Panel Insert, Simulated Carbon Fiber/Metal-Look Console Insert and Chrome/Metal-Look Interior Accents
- Leather/Metal-Look Gear Shifter Material- Leatherette Door Trim Insert
- Locking Glove Box
- Manual Adjustable Front Head Restraints and Fixed Rear Head Restraints
- Manual Air Conditioning- Manual Tilt/Telescoping Steering Column
- NissanConnect Selective Service Internet Access- Outside Temp Gauge
- Passenger Seat- Perimeter Alarm- Rear Cupholder
- Remote Releases -inc: Power Cargo Access and Mechanical Fuel
- Seats w/Vinyl Back Material- Sport Leather/Metal-Look Steering Wheel
- Sport Seat Trim -inc: unique color stitching - Systems Monitor- Valet Function

Mechanical

- 120 Amp Alternator- 16.2 Gal. Fuel Tank
- 4-Wheel Disc Brakes w/4-Wheel ABS, Front Vented Discs, Brake Assist and Hill Hold Control
- 4.83 Axle Ratio- 60-Amp/Hr 510CCA Maintenance-Free Battery w/Run Down Protection
- Electro-Hydraulic Power Assist Speed-Sensing Steering- Engine Oil Cooler
- Engine: 2.5L DOHC 16-Valve 4-Cylinder- Front And Rear Anti-Roll Bars
- Front-Wheel Drive- Gas-Pressurized Shock Absorbers
- Multi-Link Rear Suspension w/Coil Springs
- Quasi-Dual Stainless Steel Exhaust w/Chrome Tailpipe Finisher
- Sport Tuned Suspension- Strut Front Suspension w/Coil Springs
- Transmission w/Driver Selectable Mode
- Transmission: Xtronic CVT (Continuously Variable) -inc: paddle shifters

Auto Depot of Calexico

Auto Depot of Calexico

View this car on our website at autodepotcalexico.com/6960390

Website: autodepotcalexico.com

Phone: 760-357-0043

Map: 747 Imperial Ave, Calexico, CA 92231

